



WEEKLY DIESEL PRICE - FUNDAMENTAL TRENDS

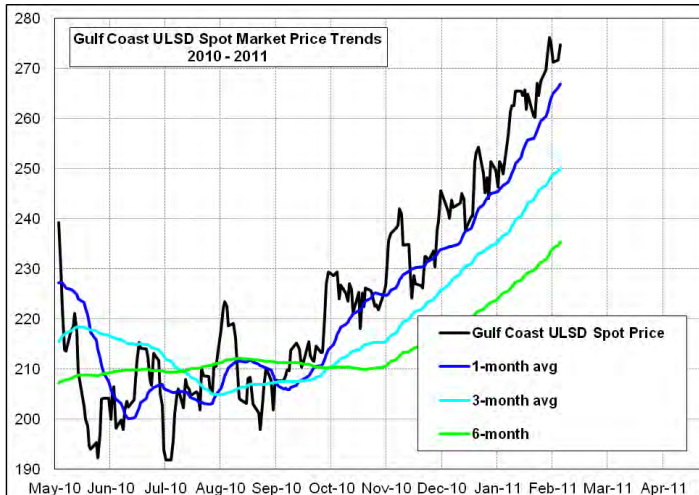
A Fundamental Petroleum Trends Weekly Report

Lehi German Tel: 816.505.0980 www.fundamentalpetroleumtrends.com Wednesday, February 09, 2011

Weekly Retail On-Highway Diesel Prices *

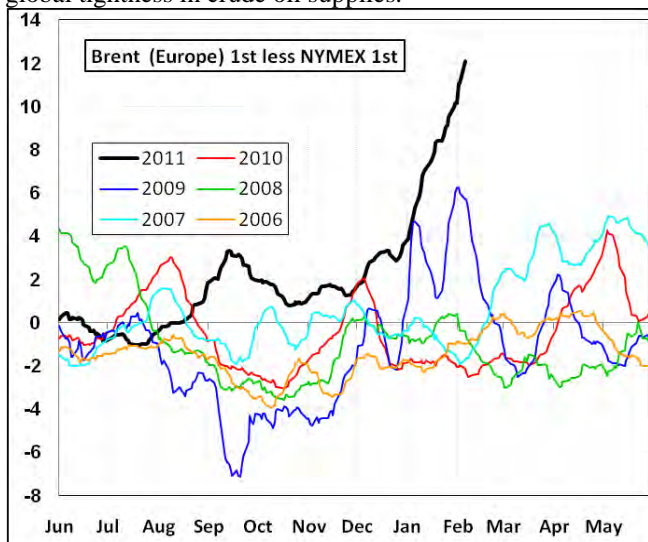
Weekly Retail On-Highway Diesel Prices
(Dollars per gallon, including all taxes)

Region	01/24/11	01/31/11	02/07/11	Change from week ago
U.S.	3.430	3.438	3.513	0.075
East Coast	3.480	3.494	3.565	0.071
New England	3.609	3.633	3.717	0.084
Central Atlantic	3.590	3.611	3.682	0.071
Lower Atlantic	3.421	3.432	3.501	0.069
Midwest	3.392	3.399	3.475	0.076
Gulf Coast	3.382	3.384	3.455	0.071
Rocky Mountain	3.388	3.396	3.459	0.063
West Coast	3.531	3.533	3.630	0.097
California	3.602	3.612	3.707	0.095



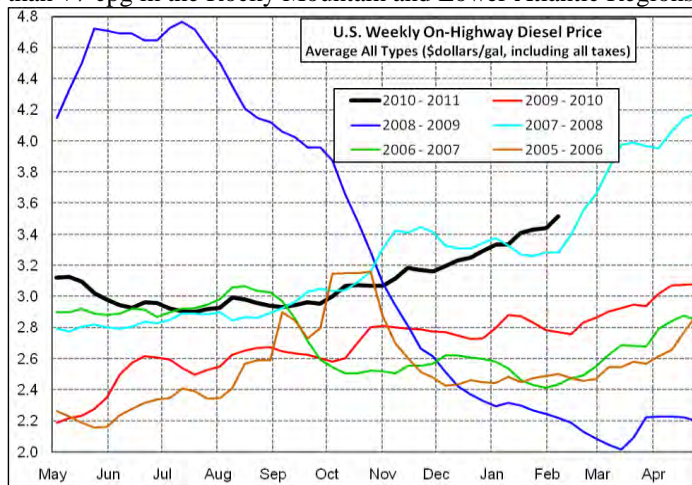
Supply - Demand Fundamental Trends Sharply higher heating oil demand and relatively low imports to the East Coast has resulted in a larger than normal stock draw down in PADD 1 during the last month. This tightness underlies the above average rise in retail diesel prices in the New England region over the last several weeks. A sharp drop in West Coast production due to refinery maintenance underlies the recent above average increase in retail prices for that region.

The U.S. domestic crude oil market is extremely over supplied as a result of increased production and particularly higher imports from Canada. This has driven the WTI crude oil price to a record discount compared to the key European crude oil graded, Brent. This deep discount for WTI crude oil points to the global tightness in crude oil supplies.



Diesel Price Outlook Retail price increases should moderate this week on flat spot market prices. Strong global oil demand should continue to lift energy prices during the 1st half of 2011; although a price pull back is likely as refiners began spring maintenance, leading to a seasonal drop in demand for crude oil. Consider awaiting a spot market price pull back to the 3-month average to fix transport fuel cost.

Diesel Fuel Price Trends U.S. retail diesel prices increased +7.5 cpg for the week ending 07Feb11 versus 31Jan11. The national average price reached a new record high for this time of year. Prices increased +9.4 and +8.4 cpg on the West Coast and New England last week where refinery maintenance and colder than normal temperatures has lifted prices. Prices increased less than +7 cpg in the Rocky Mountain and Lower Atlantic Regions.



Gulf Coast ULSD spot distillate prices increased +1 cpg for the week ending 08Feb11 versus 01Feb11. Price levels remain well above the 1-month, 3-month and 6-month moving averages.

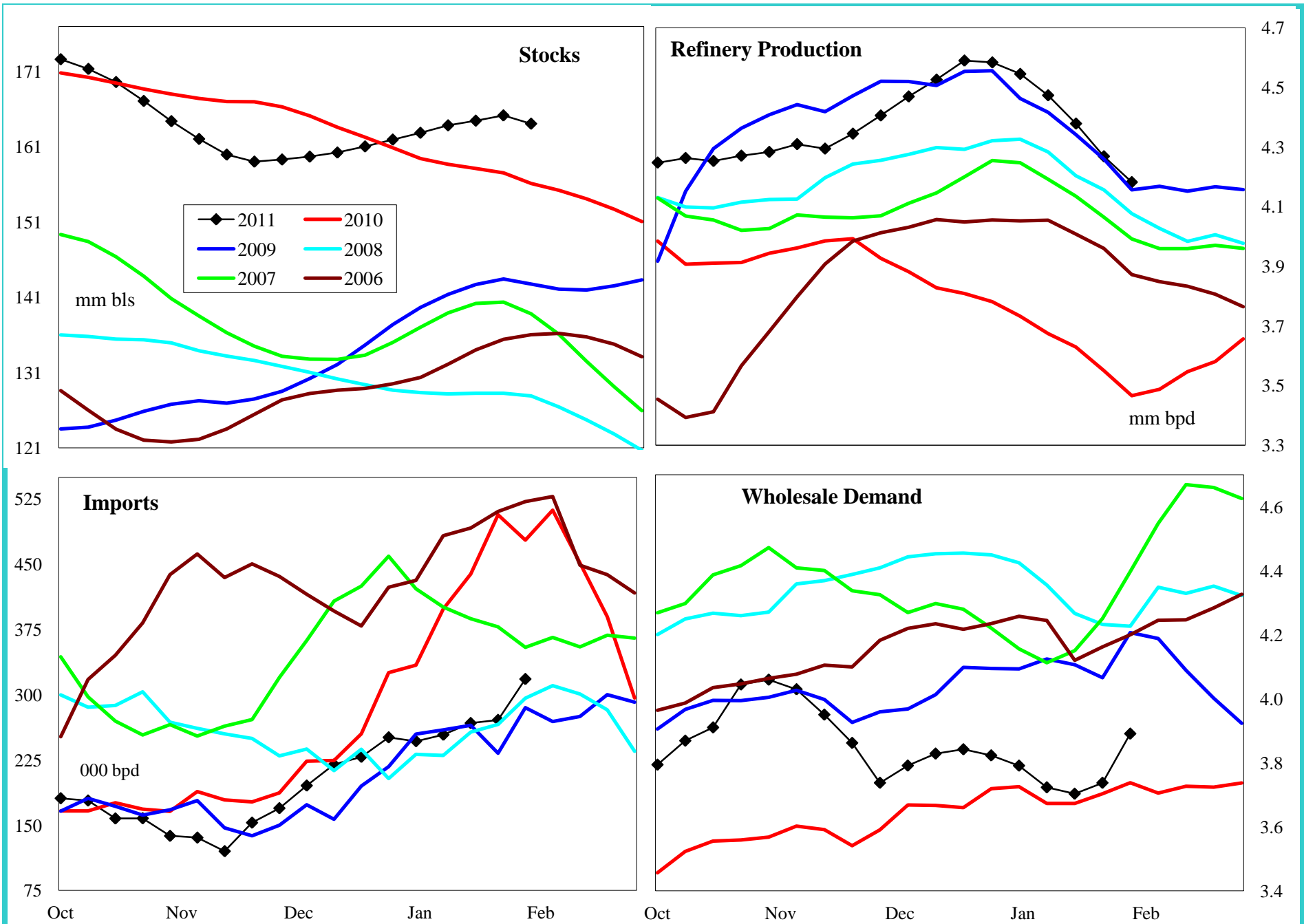
The +7.5 cpg rise in retail prices compared to only a +1 cpg rise in wholesale spot prices reflects the lag effect between street and spot markets.

Egyptian protests have so far failed to spread to other middle eastern countries and forecasts are for moderating temperatures across much of the country during the 2nd half of February; factors that restrained a further increase in spot prices last week.

U.S. refinery production of distillates remains at a 5-year high for this time of year. While inclement weather has limited year-on-year growth in domestic demand during the latest 4-wk period, exports continue at record levels.

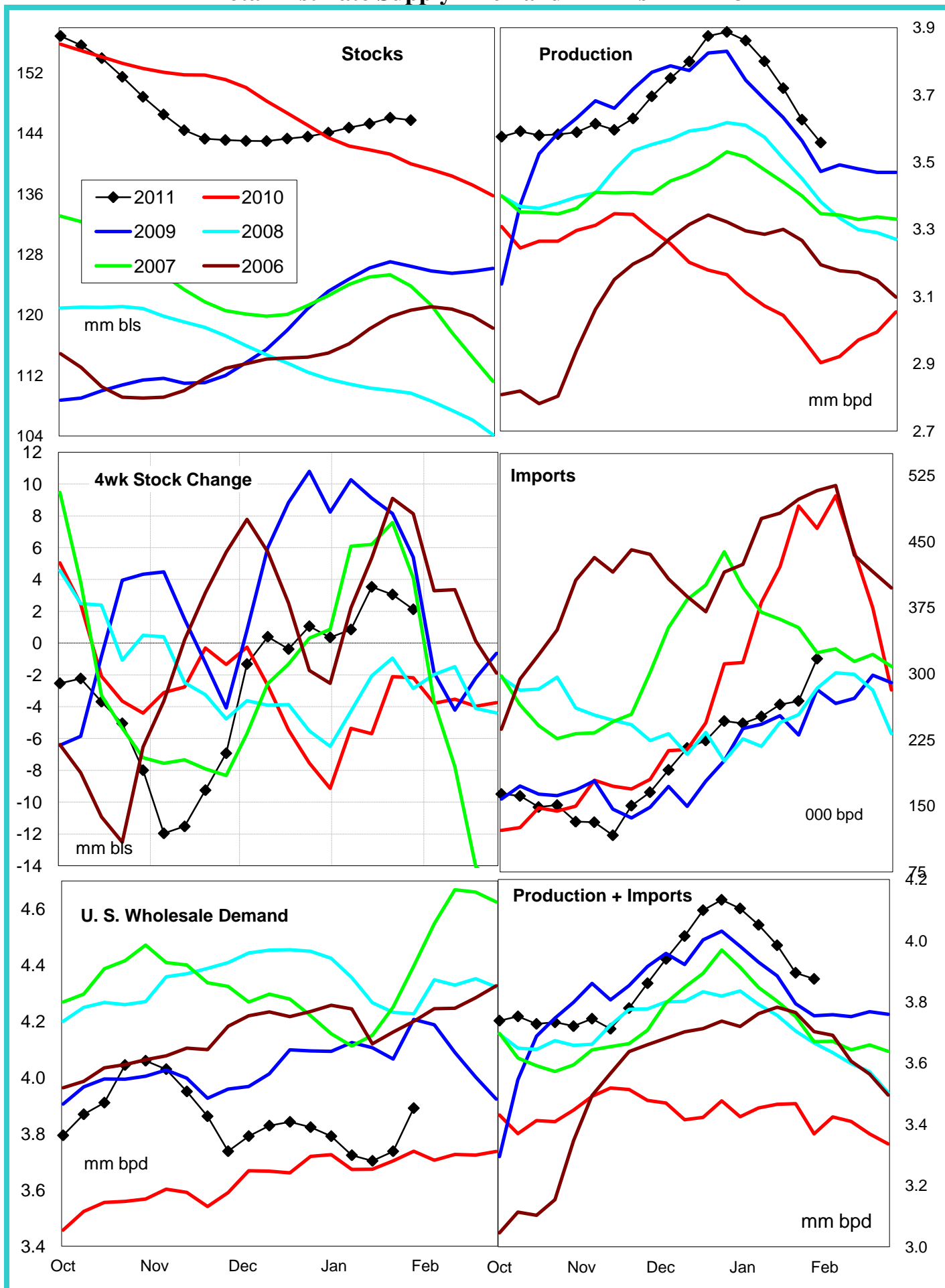
Disclaimer - The information contained on this website and in all its reports reflects the opinion of Fundamental Petroleum Trends. Futures and commodities trading involve significant risk and may not be suitable for every investor. Information contained herein is strictly the opinion of its author and is intended for informational purposes and is not to be construed as a recommendation to sell or buy, or trade in any commodity mentioned herein. Information is obtained from sources believed reliable, but is in no way guaranteed. Opinions, market data and recommendations are subject to change at any time. Past results are not indicative of future results. Charts are developed by Fundamental Petroleum Trends from EIA, NWS, other public data and proprietary models unless otherwise noted and credited.

United States Distillate Supply and Demand Balance

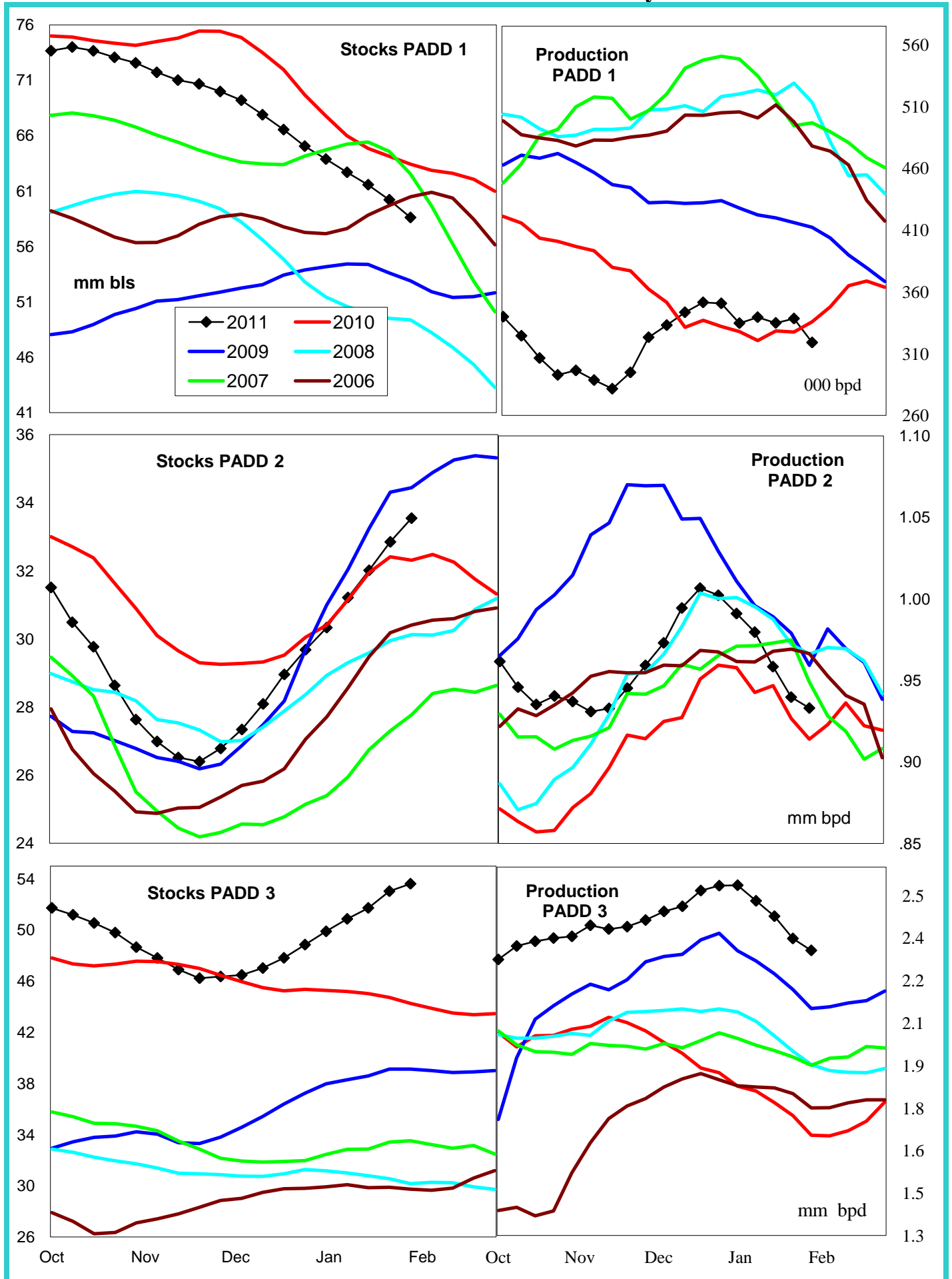


4 wk avg variance to prior year 000 bpd (000 bls stks) % change	Stocks	Production	Imports	Demand=>	4wk avg	Dec	Nov	Oct
	7,530	733	-181		-10	26	133	115
	4.8	20.4	-38.0		-0.3	0.7	3.7	3.1

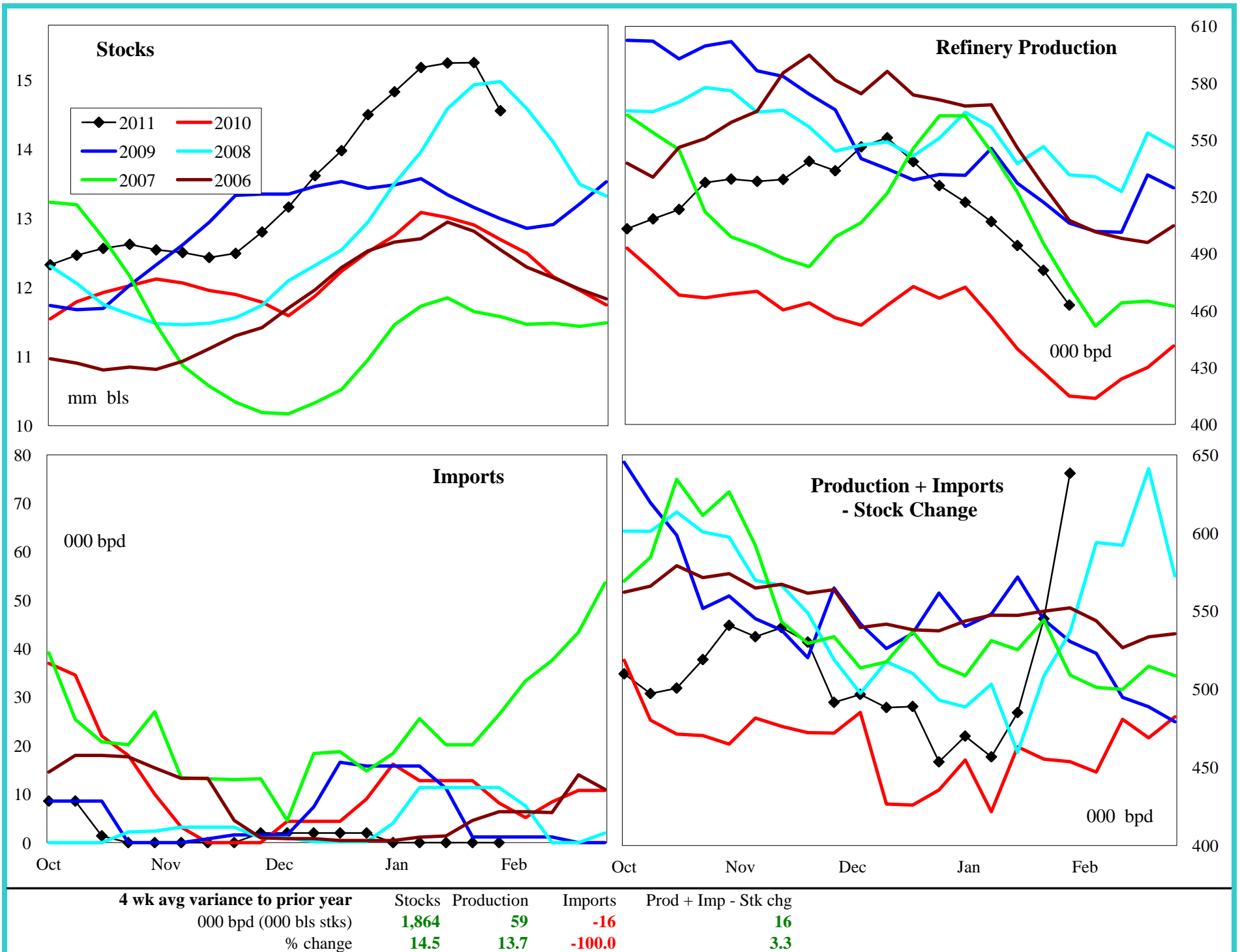
Total Distillate Supply - Demand PADDs 1 + 2 + 3



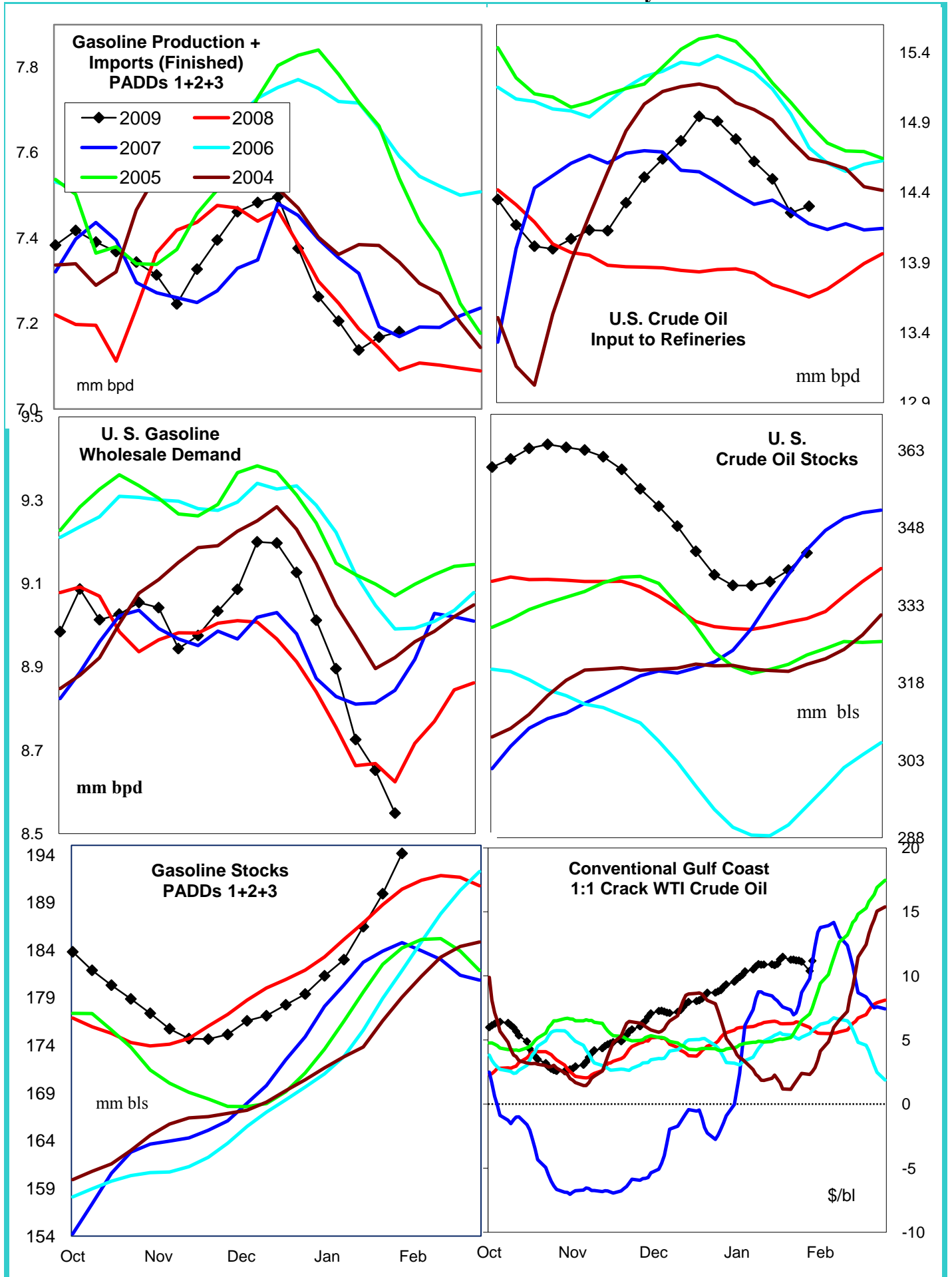
Total Distillate Production and Stocks by PADD

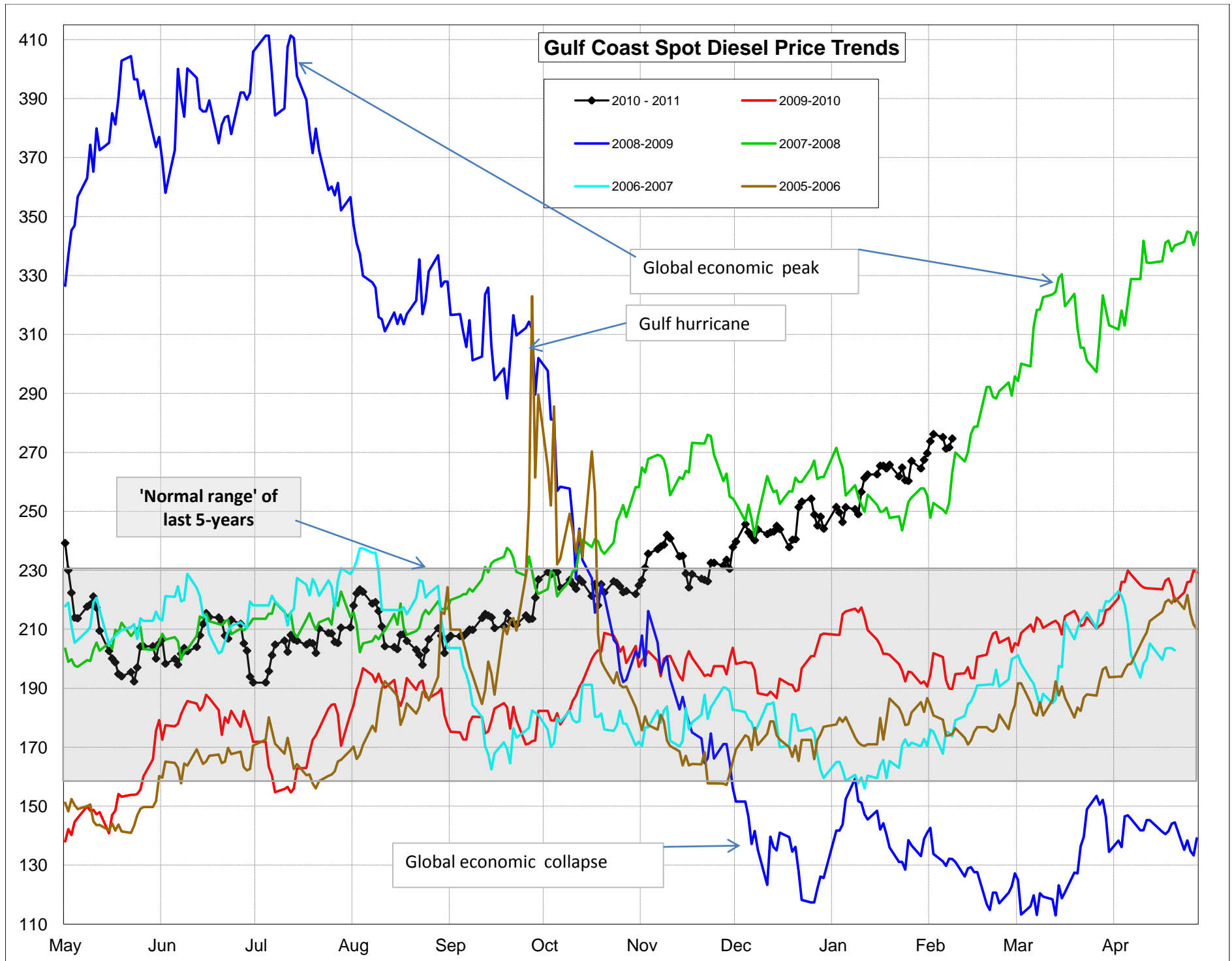


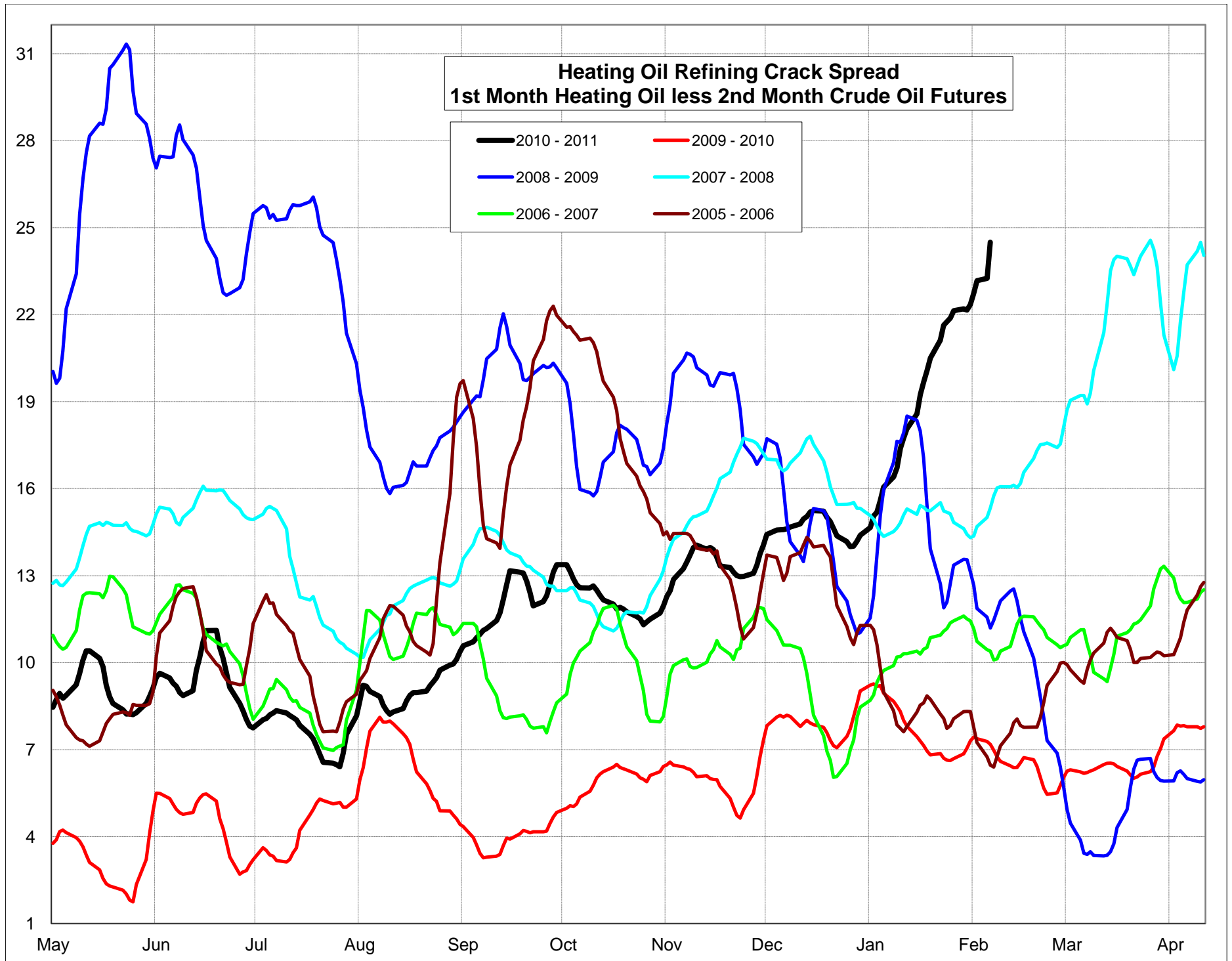
PADD 5 Distillate Supply

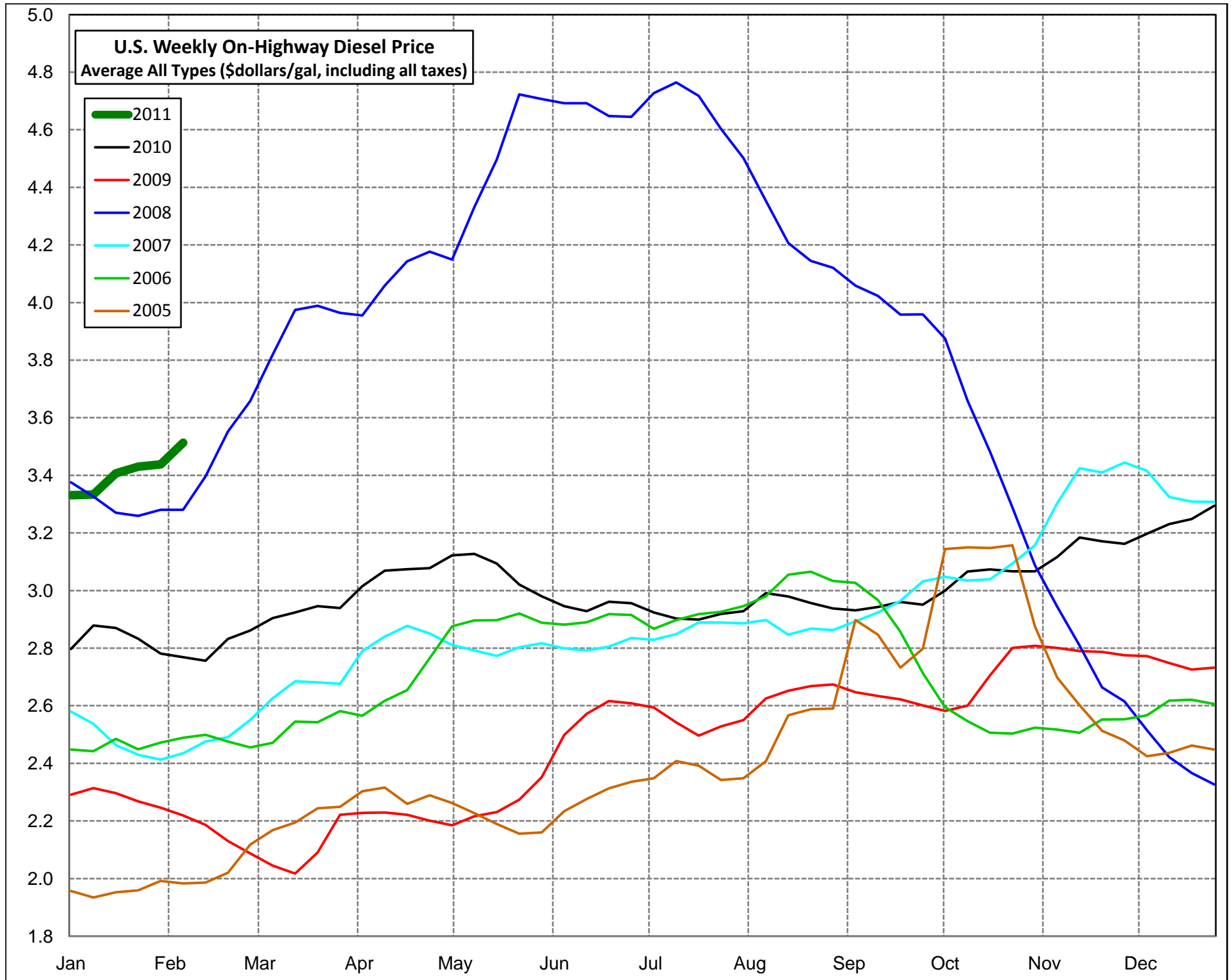


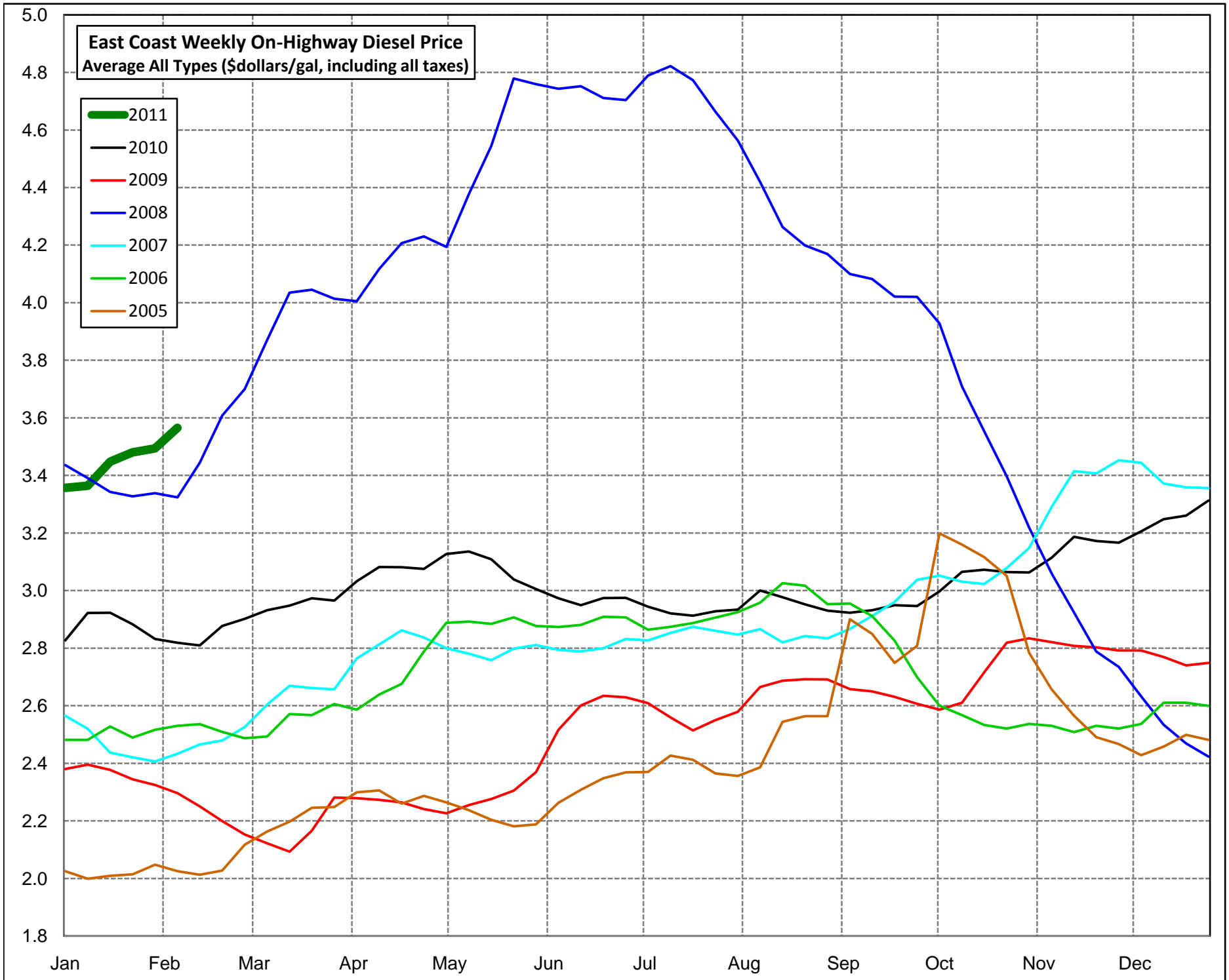
Gasoline and Crude Oil Summary

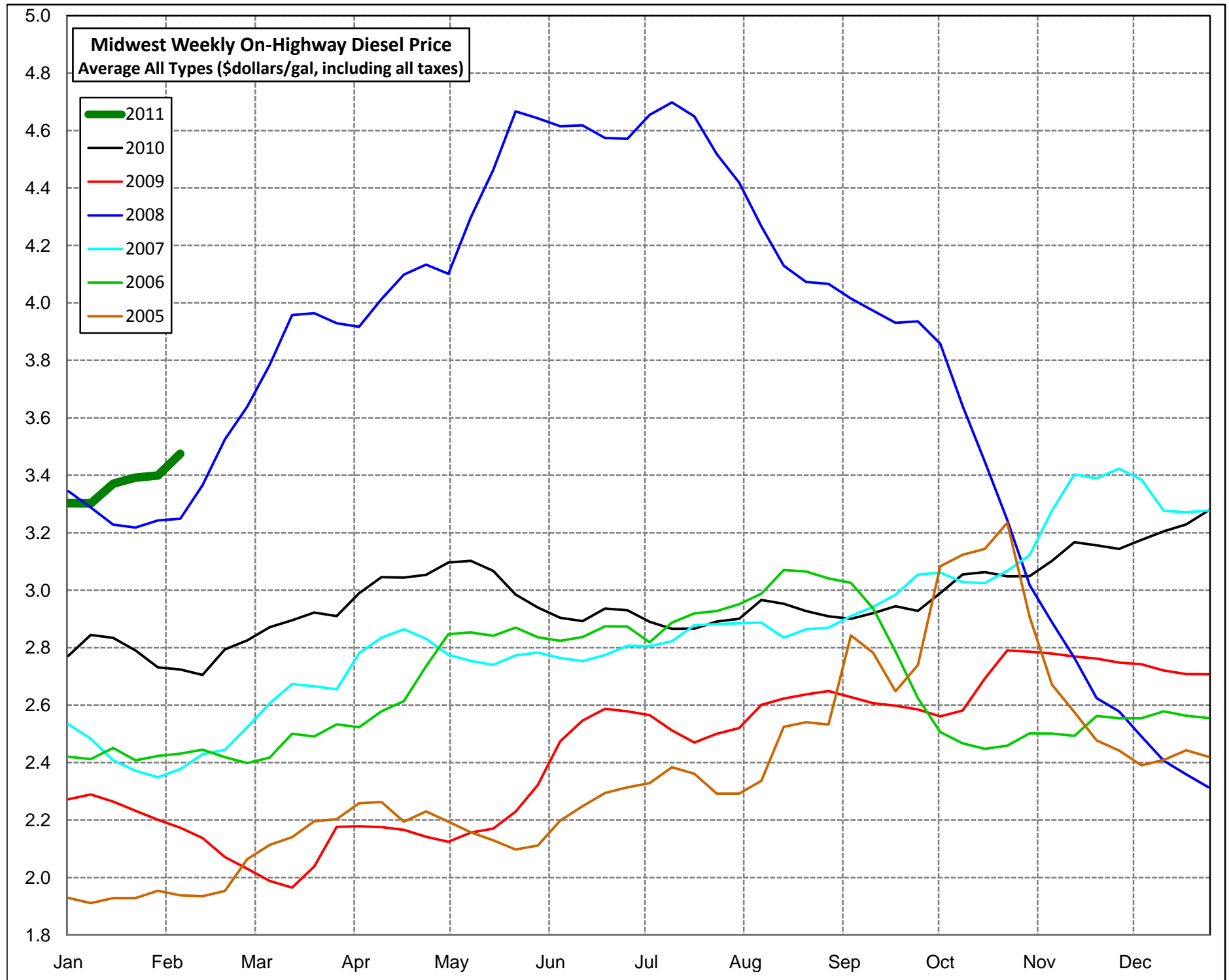


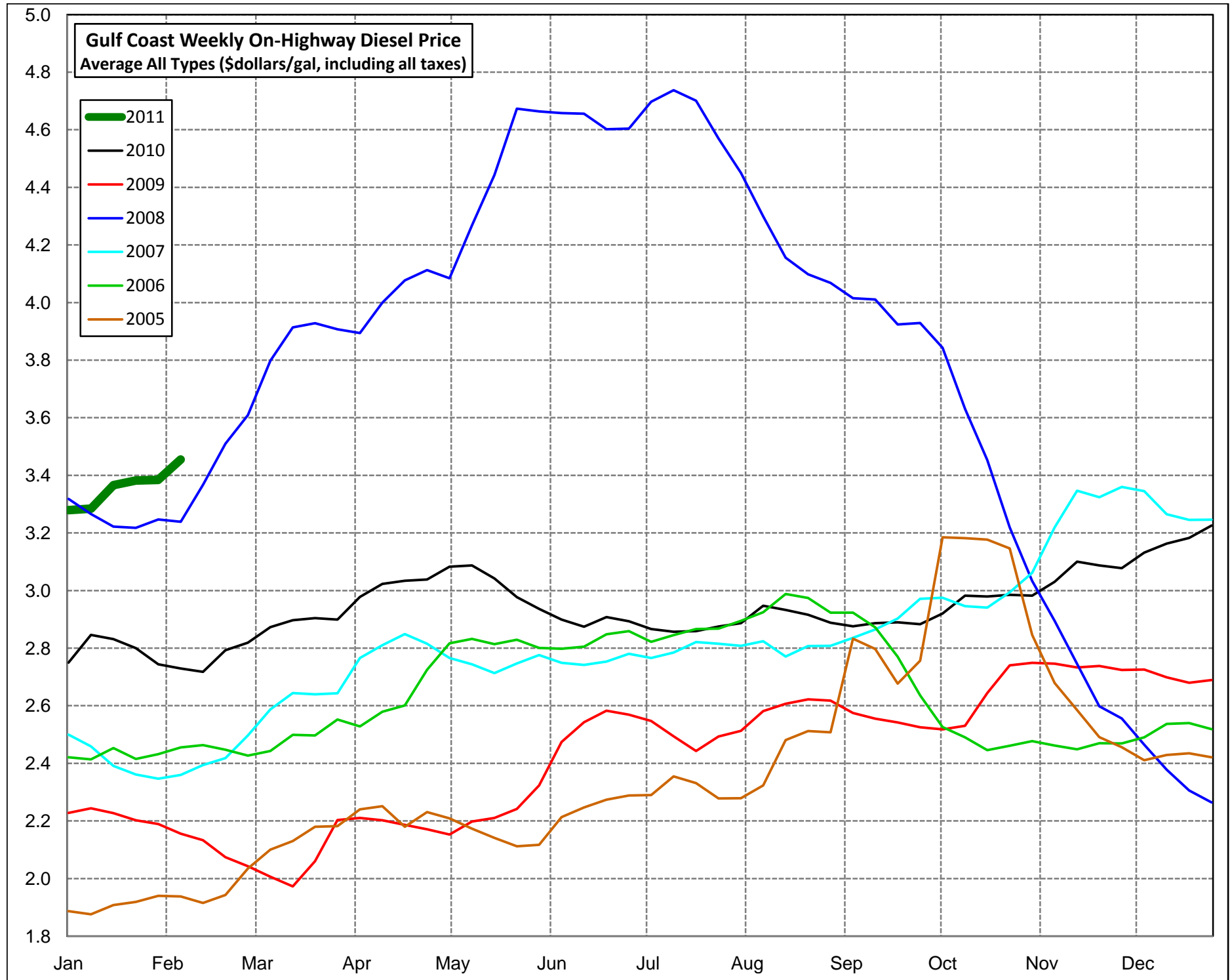


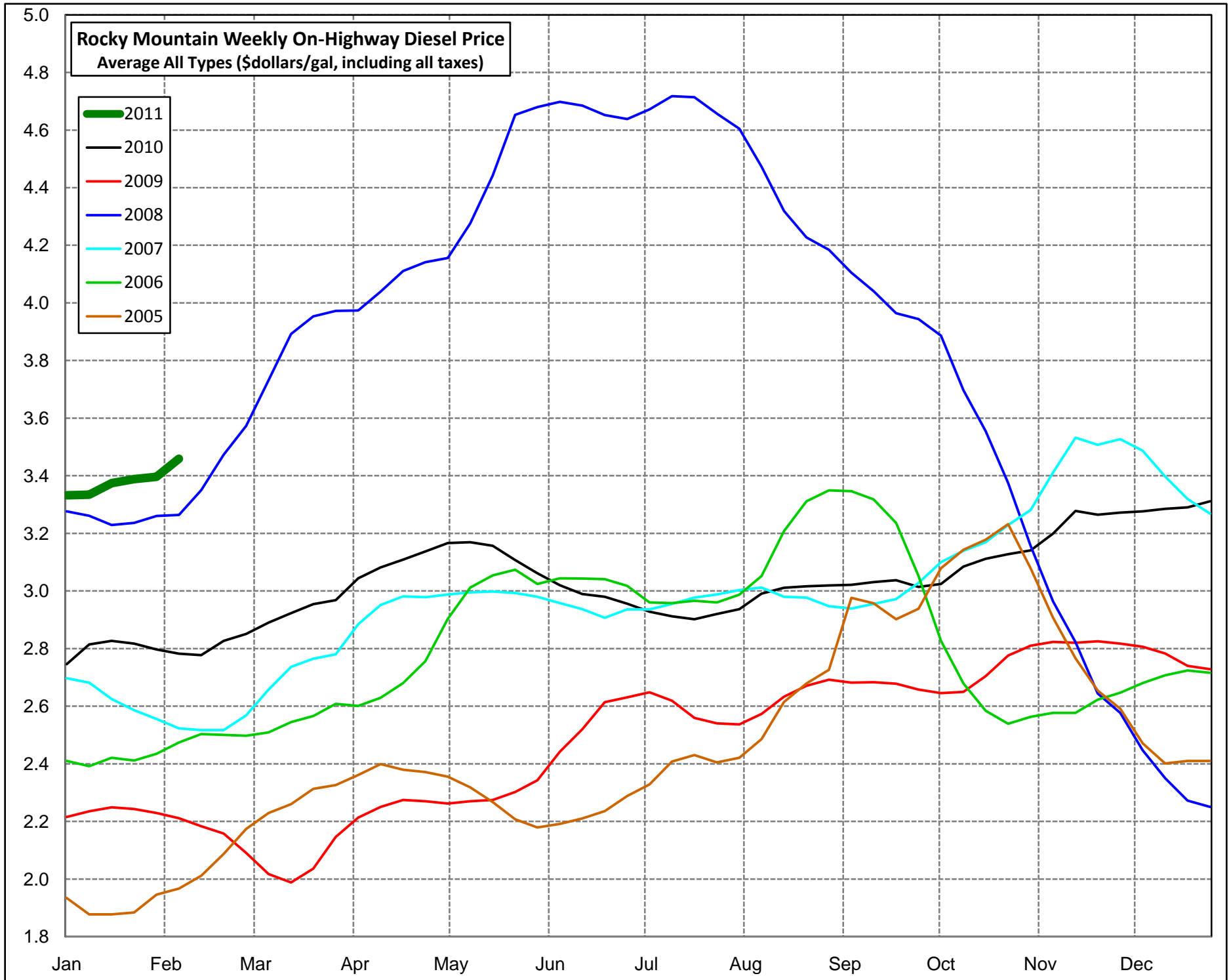


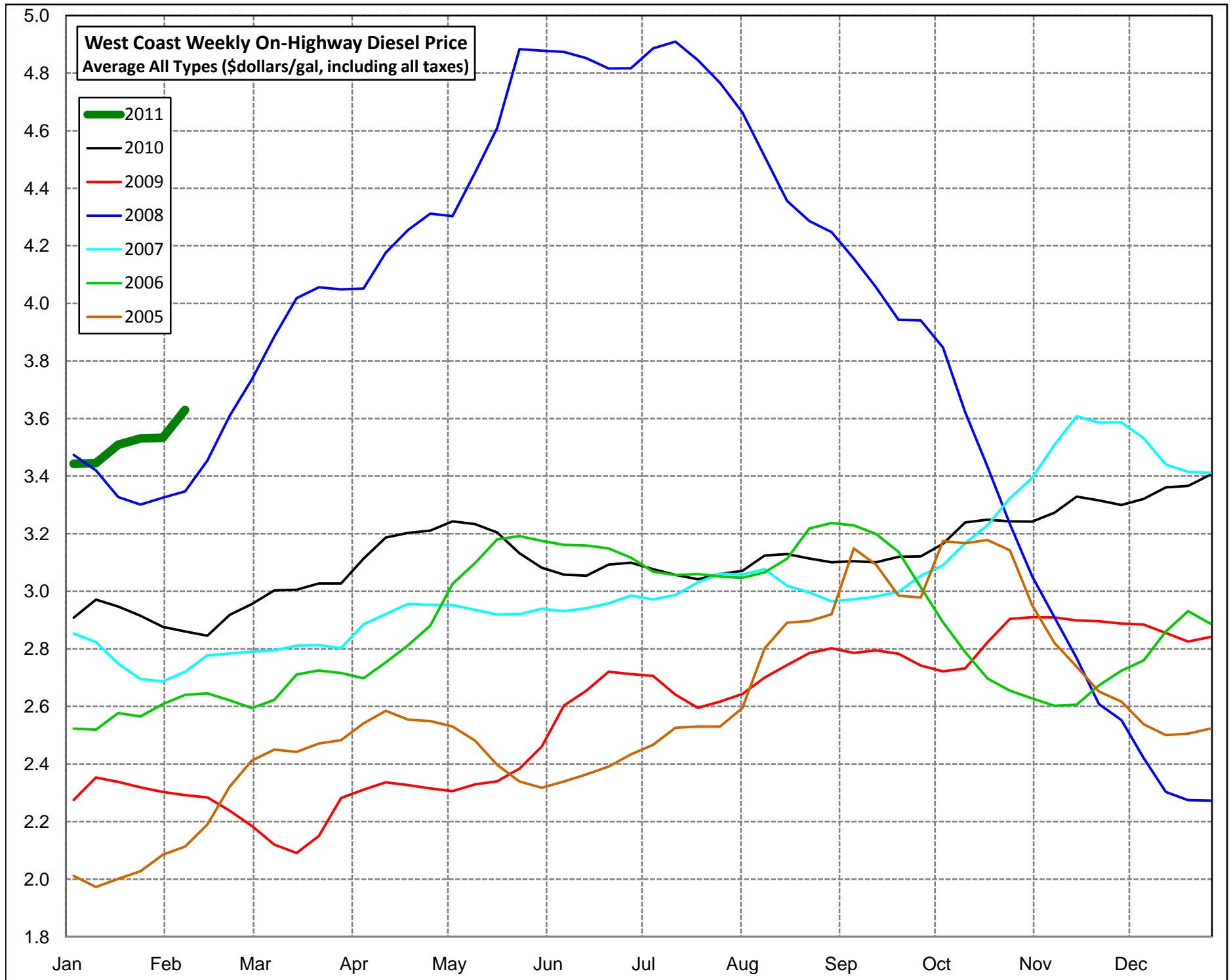












Week ending	Weekly On-Highway Diesel Prices									
	Average All Types (\$dollars/gal, including all taxes)									
	United States	East Coast	New England	Central Atlantic	Lower Atlantic	Mid West	Gulf Coast	Rocky Mtn	West Coast	California
Mon-05-Jan-04	1.503	1.519	1.662	1.630	1.458	1.473	1.458	1.527	1.628	1.674
Mon-12-Jan-04	1.551	1.583	1.713	1.681	1.530	1.518	1.519	1.535	1.641	1.680
Mon-19-Jan-04	1.559	1.598	1.748	1.705	1.539	1.526	1.527	1.540	1.632	1.672
Mon-26-Jan-04	1.591	1.636	1.777	1.737	1.579	1.564	1.558	1.555	1.639	1.680
Mon-02-Feb-04	1.581	1.622	1.786	1.741	1.557	1.551	1.546	1.550	1.653	1.696
Mon-09-Feb-04	1.568	1.595	1.773	1.728	1.521	1.525	1.515	1.541	1.741	1.810
Mon-16-Feb-04	1.584	1.602	1.765	1.730	1.533	1.544	1.524	1.554	1.789	1.866
Mon-23-Feb-04	1.595	1.616	1.767	1.736	1.551	1.555	1.536	1.566	1.788	1.864
Mon-01-Mar-04	1.619	1.629	1.767	1.736	1.571	1.579	1.549	1.599	1.851	1.939
Mon-08-Mar-04	1.628	1.639	1.762	1.740	1.584	1.588	1.566	1.623	1.845	1.927
Mon-15-Mar-04	1.617	1.624	1.756	1.731	1.566	1.582	1.557	1.636	1.801	1.874
Mon-22-Mar-04	1.641	1.643	1.760	1.736	1.593	1.615	1.587	1.670	1.795	1.854
Mon-29-Mar-04	1.642	1.638	1.757	1.729	1.588	1.616	1.583	1.680	1.817	1.889
Mon-05-Apr-04	1.648	1.636	1.755	1.720	1.589	1.610	1.586	1.697	1.885	2.014
Mon-12-Apr-04	1.679	1.640	1.748	1.721	1.596	1.631	1.605	1.748	2.026	2.162
Mon-19-Apr-04	1.724	1.665	1.757	1.742	1.624	1.679	1.639	1.835	2.112	2.260
Mon-26-Apr-04	1.718	1.655	1.755	1.736	1.611	1.670	1.634	1.876	2.103	2.247
Mon-03-May-04	1.717	1.653	1.754	1.742	1.605	1.657	1.627	1.892	2.146	2.274
Mon-10-May-04	1.745	1.678	1.768	1.765	1.633	1.667	1.645	1.928	2.255	2.356
Mon-17-May-04	1.763	1.700	1.804	1.791	1.652	1.688	1.664	1.951	2.250	2.340
Mon-24-May-04	1.761	1.707	1.806	1.799	1.658	1.687	1.671	1.955	2.198	2.266
Mon-31-May-04	1.746	1.705	1.815	1.800	1.655	1.684	1.661	1.940	2.105	2.186
Mon-07-Jun-04	1.734	1.700	1.816	1.792	1.649	1.675	1.655	1.921	2.063	2.121
Mon-14-Jun-04	1.711	1.687	1.810	1.780	1.636	1.657	1.635	1.879	1.998	2.051
Mon-21-Jun-04	1.700	1.685	1.807	1.776	1.636	1.652	1.623	1.835	1.959	2.019
Mon-28-Jun-04	1.700	1.688	1.804	1.776	1.639	1.650	1.624	1.815	1.969	2.034
Mon-05-Jul-04	1.716	1.698	1.802	1.790	1.649	1.670	1.641	1.788	2.010	2.076
Mon-12-Jul-04	1.740	1.718	1.812	1.810	1.670	1.694	1.671	1.794	2.040	2.113
Mon-19-Jul-04	1.744	1.727	1.822	1.820	1.678	1.699	1.674	1.797	2.033	2.096
Mon-26-Jul-04	1.754	1.737	1.836	1.828	1.689	1.709	1.691	1.809	2.031	2.107
Mon-02-Aug-04	1.780	1.765	1.857	1.856	1.717	1.738	1.722	1.823	2.036	2.115
Mon-09-Aug-04	1.814	1.803	1.889	1.891	1.758	1.781	1.756	1.849	2.030	2.113
Mon-16-Aug-04	1.825	1.811	1.910	1.903	1.763	1.797	1.765	1.862	2.029	2.113
Mon-23-Aug-04	1.874	1.861	1.944	1.944	1.818	1.846	1.833	1.896	2.061	2.153
Mon-30-Aug-04	1.871	1.858	1.956	1.937	1.815	1.844	1.824	1.915	2.051	2.148
Mon-06-Sep-04	1.869	1.858	1.949	1.933	1.818	1.845	1.819	1.918	2.038	2.136
Mon-13-Sep-04	1.874	1.867	1.954	1.938	1.829	1.847	1.826	1.919	2.040	2.131
Mon-20-Sep-04	1.912	1.905	1.988	1.973	1.868	1.882	1.868	1.937	2.088	2.152
Mon-27-Sep-04	2.012	2.019	2.102	2.092	1.981	1.982	1.971	1.999	2.169	2.236
Mon-04-Oct-04	2.053	2.058	2.155	2.144	2.013	2.019	2.000	2.065	2.238	2.290
Mon-11-Oct-04	2.092	2.100	2.212	2.200	2.047	2.055	2.033	2.132	2.276	2.322
Mon-18-Oct-04	2.180	2.179	2.290	2.267	2.131	2.161	2.115	2.219	2.337	2.394
Mon-25-Oct-04	2.212	2.213	2.329	2.309	2.161	2.185	2.144	2.278	2.380	2.437
Mon-01-Nov-04	2.206	2.212	2.330	2.307	2.161	2.172	2.147	2.276	2.370	2.431
Mon-08-Nov-04	2.163	2.182	2.296	2.278	2.130	2.123	2.096	2.248	2.324	2.386
Mon-15-Nov-04	2.132	2.159	2.268	2.262	2.105	2.096	2.056	2.215	2.274	2.336
Mon-22-Nov-04	2.116	2.143	2.258	2.251	2.086	2.083	2.048	2.170	2.242	2.299
Mon-29-Nov-04	2.116	2.141	2.258	2.252	2.082	2.086	2.053	2.171	2.233	2.287
Mon-06-Dec-04	2.069	2.111	2.234	2.220	2.053	2.033	1.995	2.124	2.181	2.225
Mon-13-Dec-04	1.997	2.063	2.206	2.184	1.998	1.953	1.910	2.049	2.097	2.138
Mon-20-Dec-04	1.984	2.052	2.199	2.171	1.988	1.944	1.922	1.988	2.047	2.087
Mon-27-Dec-04	1.987	2.045	2.196	2.161	1.982	1.959	1.928	1.961	2.040	2.097

Week ending	Weekly On-Highway Diesel Prices									
	Average All Types (\$dollars/gal, including all taxes)									
	United States	East Coast	New England	Central Atlantic	Lower Atlantic	Mid West	Gulf Coast	Rocky Mtn	West Coast	California
Mon-03-Jan-05	1.957	2.025	2.180	2.163	1.952	1.929	1.887	1.934	2.011	2.063
Mon-10-Jan-05	1.934	1.999	2.163	2.133	1.926	1.911	1.876	1.877	1.973	2.014
Mon-17-Jan-05	1.952	2.009	2.168	2.127	1.944	1.928	1.908	1.877	2.001	2.023
Mon-24-Jan-05	1.959	2.014	2.180	2.140	1.945	1.928	1.919	1.884	2.027	2.068
Mon-31-Jan-05	1.992	2.048	2.225	2.172	1.979	1.954	1.940	1.946	2.085	2.126
Mon-07-Feb-05	1.983	2.025	2.222	2.159	1.950	1.938	1.938	1.967	2.113	2.144
Mon-14-Feb-05	1.986	2.013	2.197	2.150	1.938	1.935	1.915	2.011	2.190	2.196
Mon-21-Feb-05	2.020	2.027	2.198	2.154	1.957	1.953	1.943	2.087	2.321	2.259
Mon-28-Feb-05	2.118	2.117	2.241	2.233	2.056	2.064	2.035	2.174	2.412	2.376
Mon-07-Mar-05	2.168	2.163	2.288	2.280	2.102	2.113	2.100	2.229	2.450	2.408
Mon-14-Mar-05	2.194	2.197	2.320	2.309	2.137	2.140	2.130	2.260	2.442	2.418
Mon-21-Mar-05	2.244	2.245	2.355	2.358	2.186	2.196	2.180	2.313	2.471	2.482
Mon-28-Mar-05	2.249	2.248	2.374	2.360	2.189	2.203	2.182	2.326	2.483	2.512
Mon-04-Apr-05	2.303	2.299	2.427	2.412	2.238	2.258	2.240	2.361	2.541	2.581
Mon-11-Apr-05	2.316	2.306	2.434	2.423	2.244	2.263	2.251	2.399	2.585	2.625
Mon-18-Apr-05	2.259	2.260	2.418	2.373	2.197	2.194	2.180	2.379	2.554	2.582
Mon-25-Apr-05	2.289	2.287	2.413	2.382	2.234	2.230	2.231	2.371	2.549	2.570
Mon-02-May-05	2.262	2.264	2.410	2.366	2.207	2.194	2.209	2.355	2.530	2.561
Mon-09-May-05	2.227	2.237	2.389	2.342	2.179	2.157	2.173	2.318	2.481	2.518
Mon-16-May-05	2.189	2.204	2.380	2.315	2.141	2.129	2.141	2.267	2.397	2.432
Mon-23-May-05	2.156	2.181	2.338	2.292	2.119	2.097	2.112	2.207	2.339	2.373
Mon-30-May-05	2.160	2.188	2.320	2.284	2.134	2.111	2.117	2.179	2.317	2.367
Mon-06-Jun-05	2.234	2.263	2.353	2.343	2.221	2.198	2.213	2.191	2.339	2.421
Mon-13-Jun-05	2.276	2.308	2.399	2.399	2.261	2.248	2.247	2.210	2.364	2.457
Mon-20-Jun-05	2.313	2.348	2.442	2.451	2.296	2.294	2.274	2.236	2.391	2.476
Mon-27-Jun-05	2.336	2.368	2.476	2.461	2.318	2.314	2.288	2.288	2.433	2.522
Mon-04-Jul-05	2.348	2.370	2.485	2.475	2.315	2.328	2.290	2.328	2.467	2.554
Mon-11-Jul-05	2.408	2.427	2.533	2.524	2.377	2.384	2.355	2.408	2.526	2.589
Mon-18-Jul-05	2.392	2.412	2.535	2.521	2.354	2.361	2.331	2.430	2.530	2.589
Mon-25-Jul-05	2.342	2.365	2.508	2.481	2.303	2.292	2.278	2.405	2.530	2.578
Mon-01-Aug-05	2.348	2.356	2.488	2.465	2.297	2.292	2.279	2.421	2.594	2.657
Mon-08-Aug-05	2.407	2.386	2.492	2.484	2.334	2.336	2.323	2.486	2.801	2.943
Mon-15-Aug-05	2.567	2.544	2.618	2.633	2.499	2.524	2.481	2.615	2.891	3.042
Mon-22-Aug-05	2.588	2.564	2.642	2.654	2.519	2.540	2.512	2.679	2.897	3.037
Mon-29-Aug-05	2.590	2.564	2.649	2.654	2.518	2.532	2.508	2.726	2.920	3.045
Mon-05-Sep-05	2.898	2.900	2.977	2.993	2.853	2.843	2.833	2.976	3.149	3.250
Mon-12-Sep-05	2.847	2.849	2.920	2.935	2.806	2.782	2.797	2.957	3.093	3.158
Mon-19-Sep-05	2.732	2.749	2.804	2.846	2.702	2.648	2.677	2.902	2.985	3.060
Mon-26-Sep-05	2.798	2.808	2.859	2.875	2.775	2.739	2.756	2.938	2.978	3.031
Mon-03-Oct-05	3.144	3.198	3.012	3.040	3.283	3.083	3.185	3.079	3.174	3.262
Mon-10-Oct-05	3.150	3.160	2.947	2.990	3.252	3.123	3.182	3.143	3.167	3.240
Mon-17-Oct-05	3.148	3.116	2.913	2.966	3.199	3.144	3.177	3.178	3.178	3.210
Mon-24-Oct-05	3.157	3.051	2.873	2.940	3.115	3.235	3.146	3.232	3.142	3.152
Mon-31-Oct-05	2.876	2.784	2.834	2.848	2.753	2.907	2.846	3.079	2.951	2.936
Mon-07-Nov-05	2.698	2.657	2.744	2.755	2.608	2.671	2.679	2.907	2.821	2.797
Mon-14-Nov-05	2.602	2.565	2.699	2.689	2.500	2.575	2.585	2.766	2.738	2.717
Mon-21-Nov-05	2.513	2.491	2.652	2.615	2.423	2.477	2.491	2.654	2.652	2.599
Mon-28-Nov-05	2.479	2.467	2.619	2.604	2.394	2.442	2.456	2.591	2.617	2.559
Mon-05-Dec-05	2.425	2.428	2.591	2.569	2.354	2.390	2.411	2.471	2.538	2.486
Mon-12-Dec-05	2.436	2.458	2.598	2.577	2.393	2.409	2.429	2.401	2.500	2.465
Mon-19-Dec-05	2.462	2.499	2.647	2.609	2.438	2.443	2.435	2.410	2.505	2.521
Mon-26-Dec-05	2.448	2.481	2.643	2.599	2.416	2.420	2.421	2.410	2.523	2.543

Week ending	Weekly On-Highway Diesel Prices									
	Average All Types (\$dollars/gal, including all taxes)									
	United States	East Coast	New England	Central Atlantic	Lower Atlantic	Mid West	Gulf Coast	Rocky Mtn	West Coast	California
Mon-02-Jan-06	2.442	2.481	2.645	2.590	2.420	2.412	2.414	2.392	2.519	2.538
Mon-09-Jan-06	2.485	2.528	2.676	2.626	2.473	2.451	2.453	2.421	2.577	2.601
Mon-16-Jan-06	2.449	2.489	2.663	2.605	2.424	2.408	2.415	2.411	2.565	2.603
Mon-23-Jan-06	2.472	2.516	2.668	2.610	2.462	2.423	2.432	2.435	2.608	2.674
Mon-30-Jan-06	2.489	2.530	2.661	2.618	2.481	2.431	2.455	2.474	2.640	2.733
Mon-06-Feb-06	2.499	2.536	2.659	2.618	2.490	2.445	2.463	2.503	2.645	2.739
Mon-13-Feb-06	2.476	2.509	2.617	2.591	2.464	2.419	2.447	2.500	2.621	2.709
Mon-20-Feb-06	2.455	2.487	2.593	2.580	2.437	2.398	2.427	2.497	2.594	2.674
Mon-27-Feb-06	2.471	2.493	2.593	2.593	2.441	2.417	2.443	2.509	2.623	2.688
Mon-06-Mar-06	2.545	2.571	2.656	2.682	2.516	2.500	2.499	2.545	2.711	2.739
Mon-13-Mar-06	2.543	2.567	2.687	2.681	2.507	2.491	2.497	2.566	2.725	2.747
Mon-20-Mar-06	2.581	2.606	2.702	2.697	2.558	2.533	2.552	2.608	2.716	2.738
Mon-27-Mar-06	2.565	2.586	2.700	2.681	2.536	2.523	2.528	2.601	2.698	2.727
Mon-03-Apr-06	2.617	2.639	2.731	2.727	2.593	2.578	2.579	2.629	2.753	2.812
Mon-10-Apr-06	2.654	2.676	2.769	2.767	2.629	2.614	2.601	2.680	2.812	2.881
Mon-17-Apr-06	2.765	2.788	2.865	2.876	2.743	2.735	2.725	2.756	2.881	2.933
Mon-24-Apr-06	2.876	2.888	2.961	2.978	2.843	2.847	2.817	2.903	3.026	3.103
Mon-01-May-06	2.896	2.892	2.979	2.987	2.843	2.853	2.832	3.012	3.098	3.163
Mon-08-May-06	2.897	2.884	2.972	2.983	2.834	2.841	2.814	3.054	3.180	3.244
Mon-15-May-06	2.920	2.907	3.003	3.014	2.853	2.870	2.829	3.074	3.192	3.242
Mon-22-May-06	2.888	2.877	2.982	2.987	2.820	2.836	2.801	3.024	3.175	3.234
Mon-29-May-06	2.882	2.873	2.966	2.987	2.815	2.824	2.798	3.044	3.161	3.227
Mon-05-Jun-06	2.890	2.881	2.969	2.992	2.825	2.837	2.805	3.043	3.159	3.227
Mon-12-Jun-06	2.918	2.909	2.979	2.997	2.866	2.874	2.848	3.041	3.149	3.217
Mon-19-Jun-06	2.915	2.907	2.960	2.990	2.867	2.873	2.859	3.018	3.117	3.185
Mon-26-Jun-06	2.867	2.864	2.952	2.956	2.816	2.819	2.822	2.960	3.068	3.140
Mon-03-Jul-06	2.898	2.874	2.948	2.951	2.834	2.887	2.845	2.958	3.056	3.119
Mon-10-Jul-06	2.918	2.887	2.947	2.963	2.849	2.919	2.866	2.966	3.060	3.113
Mon-17-Jul-06	2.926	2.906	2.970	2.992	2.864	2.927	2.868	2.960	3.051	3.097
Mon-24-Jul-06	2.946	2.925	2.972	3.002	2.888	2.951	2.895	2.987	3.047	3.097
Mon-31-Jul-06	2.980	2.958	2.991	3.030	2.924	2.988	2.925	3.052	3.066	3.093
Mon-07-Aug-06	3.055	3.026	3.061	3.104	2.989	3.070	2.988	3.208	3.113	3.130
Mon-14-Aug-06	3.065	3.017	3.077	3.130	2.964	3.065	2.974	3.311	3.218	3.220
Mon-21-Aug-06	3.033	2.953	3.049	3.078	2.890	3.041	2.923	3.349	3.237	3.221
Mon-28-Aug-06	3.027	2.955	3.035	3.074	2.897	3.026	2.923	3.346	3.229	3.200
Mon-04-Sep-06	2.967	2.911	3.009	3.032	2.850	2.937	2.872	3.318	3.199	3.175
Mon-11-Sep-06	2.857	2.826	2.955	2.958	2.757	2.787	2.770	3.236	3.137	3.125
Mon-18-Sep-06	2.713	2.699	2.832	2.844	2.625	2.624	2.636	3.052	3.014	3.002
Mon-25-Sep-06	2.595	2.600	2.730	2.746	2.526	2.506	2.526	2.827	2.892	2.910
Mon-02-Oct-06	2.546	2.567	2.678	2.694	2.503	2.467	2.490	2.679	2.789	2.835
Mon-09-Oct-06	2.506	2.533	2.649	2.654	2.471	2.448	2.446	2.584	2.697	2.751
Mon-16-Oct-06	2.503	2.521	2.623	2.636	2.462	2.459	2.461	2.539	2.655	2.703
Mon-23-Oct-06	2.524	2.537	2.636	2.651	2.480	2.502	2.477	2.563	2.628	2.669
Mon-30-Oct-06	2.517	2.530	2.629	2.646	2.472	2.501	2.462	2.577	2.602	2.645
Mon-06-Nov-06	2.506	2.508	2.613	2.628	2.448	2.493	2.449	2.577	2.606	2.637
Mon-13-Nov-06	2.552	2.530	2.616	2.643	2.473	2.562	2.470	2.623	2.673	2.677
Mon-20-Nov-06	2.553	2.521	2.625	2.638	2.461	2.554	2.469	2.647	2.724	2.690
Mon-27-Nov-06	2.567	2.537	2.634	2.652	2.479	2.554	2.490	2.680	2.760	2.710
Mon-04-Dec-06	2.618	2.610	2.716	2.717	2.555	2.578	2.537	2.707	2.860	2.860
Mon-11-Dec-06	2.621	2.610	2.749	2.730	2.546	2.563	2.540	2.724	2.931	2.963
Mon-18-Dec-06	2.606	2.599	2.730	2.722	2.535	2.555	2.519	2.716	2.887	2.917
Mon-25-Dec-06	2.596	2.587	2.737	2.710	2.520	2.550	2.514	2.713	2.856	2.885

Week ending	Weekly On-Highway Diesel Prices									
	Average All Types (\$dollars/gal, including all taxes)									
	United States	East Coast	New England	Central Atlantic	Lower Atlantic	Mid West	Gulf Coast	Rocky Mtn	West Coast	California
Mon-01-Jan-07	2.580	2.565	2.710	2.681	2.503	2.534	2.500	2.697	2.853	2.883
Mon-08-Jan-07	2.537	2.520	2.672	2.633	2.458	2.483	2.459	2.682	2.824	2.856
Mon-15-Jan-07	2.463	2.437	2.622	2.559	2.368	2.408	2.391	2.625	2.749	2.773
Mon-22-Jan-07	2.430	2.421	2.582	2.525	2.361	2.371	2.361	2.586	2.695	2.742
Mon-29-Jan-07	2.413	2.406	2.570	2.508	2.347	2.349	2.347	2.556	2.687	2.761
Mon-05-Feb-07	2.435	2.433	2.593	2.527	2.378	2.377	2.360	2.523	2.720	2.825
Mon-12-Feb-07	2.476	2.465	2.625	2.564	2.408	2.429	2.394	2.517	2.777	2.905
Mon-19-Feb-07	2.491	2.479	2.636	2.581	2.421	2.444	2.418	2.517	2.784	2.901
Mon-26-Feb-07	2.551	2.526	2.650	2.598	2.483	2.523	2.497	2.568	2.790	2.911
Mon-05-Mar-07	2.626	2.604	2.693	2.668	2.568	2.606	2.587	2.658	2.795	2.897
Mon-12-Mar-07	2.685	2.669	2.730	2.719	2.643	2.673	2.644	2.736	2.811	2.899
Mon-19-Mar-07	2.681	2.661	2.722	2.719	2.631	2.666	2.640	2.765	2.813	2.875
Mon-26-Mar-07	2.676	2.657	2.713	2.711	2.630	2.655	2.643	2.780	2.803	2.869
Mon-02-Apr-07	2.790	2.764	2.786	2.820	2.739	2.780	2.766	2.884	2.885	2.939
Mon-09-Apr-07	2.840	2.813	2.821	2.852	2.796	2.835	2.810	2.951	2.921	2.978
Mon-16-Apr-07	2.877	2.862	2.871	2.885	2.852	2.864	2.849	2.981	2.956	3.015
Mon-23-Apr-07	2.851	2.837	2.864	2.877	2.817	2.831	2.815	2.978	2.953	3.004
Mon-30-Apr-07	2.811	2.800	2.871	2.873	2.762	2.775	2.766	2.988	2.952	2.987
Mon-07-May-07	2.792	2.781	2.874	2.867	2.735	2.754	2.744	2.995	2.935	2.974
Mon-14-May-07	2.773	2.758	2.866	2.843	2.711	2.740	2.713	2.998	2.919	2.952
Mon-21-May-07	2.803	2.798	2.884	2.873	2.758	2.773	2.747	2.993	2.921	2.955
Mon-28-May-07	2.817	2.811	2.888	2.882	2.773	2.783	2.776	2.980	2.939	2.975
Mon-04-Jun-07	2.799	2.794	2.882	2.870	2.753	2.764	2.749	2.958	2.931	2.972
Mon-11-Jun-07	2.792	2.789	2.882	2.873	2.744	2.753	2.742	2.937	2.941	2.997
Mon-18-Jun-07	2.805	2.800	2.877	2.869	2.764	2.774	2.753	2.907	2.958	3.033
Mon-25-Jun-07	2.835	2.832	2.920	2.915	2.789	2.806	2.780	2.936	2.985	3.073
Mon-02-Jul-07	2.829	2.827	2.930	2.916	2.779	2.805	2.766	2.936	2.972	3.067
Mon-09-Jul-07	2.849	2.853	2.942	2.936	2.810	2.822	2.785	2.955	2.987	3.090
Mon-16-Jul-07	2.889	2.874	2.959	2.949	2.834	2.878	2.821	2.977	3.031	3.147
Mon-23-Jul-07	2.889	2.860	2.950	2.945	2.815	2.882	2.815	2.988	3.061	3.158
Mon-30-Jul-07	2.886	2.847	2.946	2.923	2.806	2.885	2.808	3.003	3.058	3.152
Mon-06-Aug-07	2.898	2.866	2.955	2.945	2.825	2.887	2.824	3.012	3.077	3.140
Mon-13-Aug-07	2.847	2.820	2.923	2.901	2.776	2.835	2.771	2.980	3.019	3.054
Mon-20-Aug-07	2.868	2.842	2.915	2.905	2.808	2.864	2.807	2.977	2.996	3.016
Mon-27-Aug-07	2.863	2.834	2.906	2.898	2.800	2.870	2.808	2.947	2.965	2.986
Mon-03-Sep-07	2.893	2.867	2.915	2.934	2.835	2.910	2.836	2.939	2.972	2.985
Mon-10-Sep-07	2.924	2.912	2.968	2.991	2.872	2.942	2.865	2.955	2.982	2.995
Mon-17-Sep-07	2.964	2.961	3.025	3.054	2.916	2.984	2.903	2.972	2.998	3.023
Mon-24-Sep-07	3.032	3.037	3.100	3.124	2.993	3.054	2.971	3.028	3.054	3.093
Mon-01-Oct-07	3.048	3.052	3.117	3.141	3.008	3.061	2.975	3.100	3.090	3.143
Mon-08-Oct-07	3.035	3.031	3.123	3.137	2.977	3.028	2.946	3.139	3.167	3.197
Mon-15-Oct-07	3.039	3.023	3.122	3.125	2.970	3.025	2.941	3.169	3.229	3.249
Mon-22-Oct-07	3.094	3.078	3.182	3.186	3.022	3.067	2.994	3.229	3.323	3.338
Mon-29-Oct-07	3.157	3.148	3.250	3.251	3.095	3.122	3.062	3.281	3.394	3.406
Mon-05-Nov-07	3.303	3.290	3.375	3.381	3.244	3.278	3.219	3.411	3.508	3.524
Mon-12-Nov-07	3.425	3.415	3.484	3.523	3.362	3.403	3.347	3.532	3.608	3.663
Mon-19-Nov-07	3.410	3.407	3.488	3.524	3.350	3.389	3.324	3.507	3.586	3.624
Mon-26-Nov-07	3.444	3.453	3.590	3.574	3.389	3.423	3.360	3.527	3.587	3.620
Mon-03-Dec-07	3.416	3.444	3.595	3.570	3.376	3.385	3.345	3.487	3.532	3.567
Mon-10-Dec-07	3.325	3.372	3.570	3.514	3.293	3.276	3.265	3.397	3.440	3.455
Mon-17-Dec-07	3.309	3.359	3.581	3.511	3.273	3.271	3.245	3.319	3.415	3.426
Mon-24-Dec-07	3.308	3.356	3.584	3.497	3.275	3.277	3.246	3.268	3.411	3.434
Mon-31-Dec-07	3.345	3.399	3.600	3.519	3.328	3.309	3.293	3.269	3.451	3.491

Week ending	Weekly On-Highway Diesel Prices									
	Average All Types (\$dollars/gal, including all taxes)									
	United States	East Coast	New England	Central Atlantic	Lower Atlantic	Mid West	Gulf Coast	Rocky Mtn	West Coast	California
Mon-07-Jan-08	3.376	3.436	3.644	3.554	3.366	3.345	3.318	3.276	3.474	3.526
Mon-14-Jan-08	3.326	3.391	3.621	3.510	3.318	3.288	3.266	3.261	3.420	3.459
Mon-21-Jan-08	3.270	3.343	3.594	3.472	3.264	3.228	3.222	3.229	3.327	3.360
Mon-28-Jan-08	3.259	3.327	3.583	3.432	3.258	3.218	3.218	3.236	3.301	3.346
Mon-04-Feb-08	3.280	3.338	3.566	3.438	3.275	3.243	3.247	3.260	3.325	3.377
Mon-11-Feb-08	3.280	3.324	3.542	3.412	3.266	3.249	3.239	3.264	3.347	3.393
Mon-18-Feb-08	3.396	3.444	3.588	3.526	3.396	3.365	3.367	3.350	3.454	3.511
Mon-25-Feb-08	3.552	3.608	3.710	3.693	3.562	3.525	3.510	3.473	3.609	3.672
Mon-03-Mar-08	3.658	3.700	3.813	3.825	3.636	3.639	3.609	3.573	3.736	3.803
Mon-10-Mar-08	3.819	3.870	3.938	3.989	3.814	3.784	3.798	3.732	3.885	3.955
Mon-17-Mar-08	3.974	4.035	4.119	4.177	3.967	3.958	3.914	3.892	4.018	4.083
Mon-24-Mar-08	3.989	4.045	4.142	4.186	3.975	3.964	3.928	3.953	4.056	4.119
Mon-31-Mar-08	3.964	4.014	4.130	4.160	3.941	3.929	3.907	3.972	4.049	4.112
Mon-07-Apr-08	3.955	4.005	4.121	4.142	3.936	3.917	3.894	3.974	4.052	4.118
Mon-14-Apr-08	4.059	4.117	4.239	4.266	4.043	4.013	4.000	4.039	4.176	4.234
Mon-21-Apr-08	4.143	4.207	4.346	4.370	4.126	4.098	4.077	4.111	4.255	4.317
Mon-28-Apr-08	4.177	4.230	4.346	4.376	4.157	4.133	4.113	4.141	4.312	4.390
Mon-05-May-08	4.149	4.194	4.337	4.345	4.117	4.101	4.084	4.156	4.303	4.382
Mon-12-May-08	4.331	4.377	4.463	4.516	4.310	4.298	4.268	4.276	4.454	4.547
Mon-19-May-08	4.497	4.544	4.610	4.682	4.480	4.463	4.443	4.442	4.610	4.737
Mon-26-May-08	4.723	4.779	4.843	4.913	4.717	4.667	4.673	4.653	4.883	5.027
Mon-02-Jun-08	4.707	4.759	4.846	4.907	4.687	4.643	4.664	4.680	4.878	5.027
Mon-09-Jun-08	4.692	4.743	4.834	4.879	4.677	4.615	4.658	4.698	4.874	4.992
Mon-16-Jun-08	4.692	4.752	4.853	4.874	4.690	4.618	4.656	4.685	4.852	4.969
Mon-23-Jun-08	4.648	4.711	4.833	4.831	4.648	4.574	4.602	4.652	4.816	4.922
Mon-30-Jun-08	4.645	4.704	4.822	4.822	4.643	4.571	4.604	4.638	4.817	4.928
Mon-07-Jul-08	4.727	4.789	4.863	4.887	4.741	4.654	4.697	4.672	4.886	5.001
Mon-14-Jul-08	4.764	4.822	4.889	4.912	4.777	4.698	4.737	4.718	4.909	5.026
Mon-21-Jul-08	4.718	4.773	4.869	4.869	4.723	4.649	4.701	4.714	4.845	4.964
Mon-28-Jul-08	4.603	4.664	4.806	4.772	4.604	4.518	4.570	4.657	4.766	4.869
Mon-04-Aug-08	4.502	4.563	4.735	4.672	4.501	4.419	4.450	4.605	4.664	4.781
Mon-11-Aug-08	4.353	4.420	4.584	4.563	4.344	4.267	4.299	4.473	4.511	4.607
Mon-18-Aug-08	4.207	4.263	4.422	4.414	4.184	4.130	4.156	4.319	4.356	4.422
Mon-25-Aug-08	4.145	4.199	4.382	4.360	4.113	4.073	4.098	4.227	4.286	4.359
Mon-01-Sep-08	4.121	4.169	4.359	4.307	4.093	4.066	4.068	4.184	4.248	4.282
Mon-08-Sep-08	4.059	4.100	4.312	4.246	4.018	4.015	4.015	4.105	4.156	4.185
Mon-15-Sep-08	4.023	4.082	4.246	4.166	4.031	3.973	4.011	4.041	4.056	4.053
Mon-22-Sep-08	3.958	4.021	4.110	4.081	3.987	3.931	3.924	3.964	3.943	3.951
Mon-29-Sep-08	3.959	4.020	4.077	4.073	3.992	3.936	3.929	3.944	3.941	3.963
Mon-06-Oct-08	3.875	3.928	4.036	3.978	3.896	3.858	3.843	3.886	3.847	3.869
Mon-13-Oct-08	3.659	3.709	3.892	3.794	3.655	3.641	3.631	3.697	3.622	3.656
Mon-20-Oct-08	3.482	3.553	3.729	3.633	3.503	3.447	3.453	3.555	3.433	3.460
Mon-27-Oct-08	3.288	3.397	3.573	3.509	3.333	3.244	3.219	3.375	3.233	3.286
Mon-03-Nov-08	3.088	3.219	3.420	3.369	3.137	3.018	3.033	3.157	3.052	3.057
Mon-10-Nov-08	2.944	3.060	3.266	3.203	2.980	2.888	2.895	2.964	2.910	2.913
Mon-17-Nov-08	2.809	2.924	3.148	3.072	2.840	2.764	2.745	2.822	2.768	2.754
Mon-24-Nov-08	2.664	2.788	2.997	2.925	2.710	2.624	2.598	2.644	2.608	2.605
Mon-01-Dec-08	2.615	2.735	2.954	2.875	2.655	2.578	2.556	2.577	2.553	2.538
Mon-08-Dec-08	2.515	2.632	2.849	2.742	2.564	2.491	2.465	2.447	2.421	2.402
Mon-15-Dec-08	2.422	2.534	2.740	2.642	2.469	2.406	2.378	2.350	2.303	2.292
Mon-22-Dec-08	2.366	2.469	2.689	2.566	2.406	2.359	2.306	2.272	2.274	2.251
Mon-29-Dec-08	2.327	2.423	2.638	2.536	2.355	2.314	2.264	2.250	2.273	2.241

Week ending	Weekly On-Highway Diesel Prices									
	Average All Types (\$dollars/gal, including all taxes)									
	United States	East Coast	New England	Central Atlantic	Lower Atlantic	Mid West	Gulf Coast	Rocky Mtn	West Coast	California
Mon-05-Jan-09	2.291	2.380	2.596	2.496	2.310	2.272	2.228	2.215	2.275	2.239
Mon-12-Jan-09	2.314	2.395	2.621	2.516	2.322	2.289	2.244	2.235	2.353	2.334
Mon-19-Jan-09	2.296	2.377	2.613	2.514	2.297	2.264	2.227	2.249	2.338	2.319
Mon-26-Jan-09	2.268	2.344	2.595	2.490	2.258	2.232	2.202	2.243	2.319	2.296
Mon-02-Feb-09	2.246	2.325	2.583	2.484	2.233	2.201	2.189	2.229	2.303	2.288
Mon-09-Feb-09	2.219	2.296	2.576	2.450	2.205	2.173	2.156	2.211	2.292	2.269
Mon-16-Feb-09	2.186	2.250	2.559	2.420	2.148	2.137	2.133	2.183	2.284	2.262
Mon-23-Feb-09	2.130	2.199	2.514	2.368	2.098	2.071	2.074	2.158	2.238	2.219
Mon-02-Mar-09	2.087	2.153	2.472	2.314	2.055	2.030	2.043	2.091	2.185	2.144
Mon-09-Mar-09	2.045	2.122	2.434	2.287	2.022	1.988	2.006	2.017	2.120	2.075
Mon-16-Mar-09	2.017	2.093	2.403	2.254	1.995	1.965	1.973	1.988	2.091	2.049
Mon-23-Mar-09	2.090	2.166	2.403	2.315	2.081	2.038	2.060	2.036	2.150	2.129
Mon-30-Mar-09	2.221	2.281	2.424	2.399	2.218	2.176	2.203	2.146	2.282	2.297
Mon-06-Apr-09	2.228	2.279	2.429	2.419	2.205	2.178	2.210	2.213	2.311	2.335
Mon-13-Apr-09	2.229	2.273	2.420	2.402	2.204	2.175	2.202	2.250	2.336	2.350
Mon-20-Apr-09	2.221	2.264	2.403	2.392	2.197	2.166	2.186	2.274	2.327	2.340
Mon-27-Apr-09	2.201	2.241	2.395	2.374	2.171	2.142	2.171	2.270	2.315	2.320
Mon-04-May-09	2.185	2.226	2.382	2.365	2.152	2.124	2.153	2.262	2.306	2.316
Mon-11-May-09	2.216	2.255	2.395	2.386	2.186	2.156	2.198	2.270	2.329	2.337
Mon-18-May-09	2.231	2.276	2.401	2.396	2.213	2.170	2.210	2.274	2.340	2.354
Mon-25-May-09	2.274	2.305	2.409	2.410	2.251	2.229	2.242	2.302	2.384	2.407
Mon-01-Jun-09	2.352	2.369	2.438	2.457	2.326	2.322	2.323	2.343	2.460	2.502
Mon-08-Jun-09	2.498	2.516	2.566	2.619	2.468	2.474	2.474	2.442	2.603	2.676
Mon-15-Jun-09	2.572	2.601	2.651	2.696	2.556	2.546	2.543	2.520	2.655	2.734
Mon-22-Jun-09	2.616	2.634	2.670	2.730	2.590	2.587	2.583	2.614	2.720	2.789
Mon-29-Jun-09	2.608	2.629	2.666	2.726	2.584	2.578	2.569	2.631	2.712	2.785
Mon-06-Jul-09	2.594	2.609	2.656	2.714	2.560	2.565	2.547	2.648	2.706	2.787
Mon-13-Jul-09	2.542	2.559	2.623	2.663	2.508	2.512	2.494	2.619	2.641	2.727
Mon-20-Jul-09	2.496	2.514	2.600	2.630	2.456	2.470	2.443	2.559	2.595	2.703
Mon-27-Jul-09	2.528	2.550	2.613	2.643	2.505	2.500	2.493	2.540	2.617	2.720
Mon-03-Aug-09	2.550	2.579	2.637	2.671	2.535	2.520	2.513	2.537	2.643	2.763
Mon-10-Aug-09	2.625	2.665	2.701	2.755	2.624	2.601	2.581	2.573	2.700	2.842
Mon-17-Aug-09	2.652	2.687	2.739	2.771	2.646	2.623	2.607	2.633	2.744	2.872
Mon-24-Aug-09	2.668	2.692	2.741	2.781	2.649	2.637	2.622	2.671	2.785	2.880
Mon-31-Aug-09	2.674	2.691	2.742	2.779	2.649	2.649	2.618	2.692	2.802	2.893
Mon-07-Sep-09	2.647	2.658	2.729	2.768	2.604	2.628	2.575	2.682	2.786	2.866
Mon-14-Sep-09	2.634	2.650	2.720	2.755	2.599	2.607	2.555	2.683	2.795	2.847
Mon-21-Sep-09	2.622	2.631	2.708	2.738	2.578	2.598	2.542	2.678	2.783	2.827
Mon-28-Sep-09	2.601	2.607	2.703	2.714	2.552	2.585	2.525	2.658	2.742	2.807
Mon-05-Oct-09	2.582	2.586	2.686	2.698	2.529	2.561	2.518	2.645	2.722	2.792
Mon-12-Oct-09	2.600	2.610	2.690	2.723	2.554	2.581	2.530	2.650	2.732	2.791
Mon-19-Oct-09	2.705	2.716	2.752	2.831	2.664	2.693	2.644	2.704	2.822	2.874
Mon-26-Oct-09	2.801	2.819	2.843	2.923	2.773	2.790	2.740	2.776	2.904	2.968
Mon-02-Nov-09	2.808	2.834	2.878	2.940	2.785	2.786	2.749	2.810	2.910	2.974
Mon-09-Nov-09	2.801	2.821	2.866	2.926	2.772	2.779	2.746	2.823	2.909	2.972
Mon-16-Nov-09	2.790	2.808	2.868	2.912	2.759	2.769	2.733	2.820	2.899	2.964
Mon-23-Nov-09	2.787	2.803	2.868	2.907	2.753	2.762	2.738	2.825	2.896	2.954
Mon-30-Nov-09	2.775	2.792	2.869	2.900	2.738	2.748	2.724	2.817	2.888	2.948
Mon-07-Dec-09	2.772	2.792	2.874	2.896	2.740	2.742	2.726	2.806	2.884	2.942
Mon-14-Dec-09	2.748	2.769	2.870	2.868	2.717	2.720	2.699	2.783	2.855	2.915
Mon-21-Dec-09	2.726	2.740	2.853	2.841	2.687	2.708	2.680	2.740	2.825	2.891
Mon-28-Dec-09	2.732	2.749	2.862	2.857	2.693	2.707	2.689	2.728	2.841	2.902

Week ending	Weekly On-Highway Diesel Prices									
	Average All Types (\$dollars/gal, including all taxes)									
	United States	East Coast	New England	Central Atlantic	Lower Atlantic	Mid West	Gulf Coast	Rocky Mtn	West Coast	California
Mon-04-Jan-10	2.797	2.827	2.935	2.932	2.772	2.771	2.750	2.746	2.908	2.959
Mon-11-Jan-10	2.879	2.922	3.068	3.026	2.864	2.844	2.846	2.814	2.971	3.032
Mon-18-Jan-10	2.870	2.923	3.065	3.023	2.867	2.834	2.831	2.827	2.947	3.008
Mon-25-Jan-10	2.833	2.883	3.055	2.986	2.823	2.790	2.800	2.817	2.915	2.987
Mon-01-Feb-10	2.781	2.832	3.017	2.926	2.775	2.731	2.744	2.797	2.876	2.950
Mon-08-Feb-10	2.769	2.819	3.014	2.920	2.757	2.724	2.729	2.782	2.860	2.920
Mon-15-Feb-10	2.756	2.809	2.991	2.905	2.751	2.705	2.718	2.777	2.846	2.902
Mon-22-Feb-10	2.832	2.877	3.011	2.967	2.826	2.794	2.793	2.827	2.918	2.980
Mon-01-Mar-10	2.861	2.902	3.018	3.013	2.844	2.825	2.819	2.851	2.956	3.023
Mon-08-Mar-10	2.904	2.932	3.015	3.037	2.880	2.871	2.873	2.890	3.003	3.057
Mon-15-Mar-10	2.924	2.948	3.018	3.055	2.895	2.895	2.897	2.923	3.005	3.065
Mon-22-Mar-10	2.946	2.973	3.032	3.079	2.923	2.922	2.904	2.954	3.027	3.072
Mon-29-Mar-10	2.939	2.965	3.029	3.075	2.913	2.910	2.899	2.968	3.027	3.073
Mon-05-Apr-10	3.015	3.032	3.054	3.136	2.986	2.989	2.978	3.044	3.113	3.147
Mon-12-Apr-10	3.069	3.082	3.086	3.186	3.037	3.045	3.023	3.082	3.187	3.221
Mon-19-Apr-10	3.074	3.081	3.103	3.189	3.033	3.044	3.034	3.109	3.203	3.228
Mon-26-Apr-10	3.078	3.075	3.105	3.186	3.025	3.053	3.038	3.137	3.211	3.227
Mon-03-May-10	3.122	3.127	3.138	3.238	3.079	3.096	3.083	3.166	3.243	3.260
Mon-10-May-10	3.127	3.136	3.161	3.246	3.087	3.102	3.087	3.169	3.233	3.269
Mon-17-May-10	3.094	3.109	3.142	3.232	3.054	3.067	3.042	3.157	3.204	3.238
Mon-24-May-10	3.021	3.039	3.098	3.165	2.981	2.985	2.977	3.107	3.132	3.162
Mon-31-May-10	2.980	3.005	3.064	3.121	2.950	2.940	2.936	3.061	3.082	3.094
Mon-07-Jun-10	2.946	2.973	3.045	3.090	2.916	2.904	2.899	3.020	3.058	3.068
Mon-14-Jun-10	2.928	2.949	3.025	3.067	2.892	2.892	2.874	2.989	3.054	3.068
Mon-21-Jun-10	2.961	2.974	3.029	3.088	2.921	2.936	2.908	2.980	3.093	3.125
Mon-28-Jun-10	2.956	2.975	3.044	3.091	2.919	2.930	2.893	2.956	3.099	3.147
Mon-05-Jul-10	2.924	2.944	3.033	3.055	2.889	2.890	2.866	2.928	3.077	3.132
Mon-12-Jul-10	2.903	2.921	3.017	3.022	2.869	2.865	2.857	2.912	3.057	3.123
Mon-19-Jul-10	2.899	2.913	3.015	3.012	2.861	2.866	2.859	2.902	3.042	3.116
Mon-26-Jul-10	2.919	2.928	3.014	3.020	2.880	2.891	2.875	2.920	3.060	3.125
Mon-02-Aug-10	2.928	2.934	3.009	3.020	2.890	2.900	2.887	2.937	3.071	3.132
Mon-09-Aug-10	2.991	3.000	3.027	3.086	2.962	2.966	2.947	2.991	3.124	3.183
Mon-16-Aug-10	2.979	2.977	3.024	3.055	2.940	2.953	2.933	3.011	3.129	3.186
Mon-23-Aug-10	2.957	2.952	3.009	3.038	2.910	2.927	2.916	3.016	3.114	3.171
Mon-30-Aug-10	2.938	2.930	2.996	3.020	2.886	2.909	2.888	3.019	3.101	3.150
Mon-06-Sep-10	2.931	2.923	2.995	3.007	2.880	2.900	2.876	3.021	3.104	3.145
Mon-13-Sep-10	2.943	2.932	2.987	3.019	2.890	2.920	2.887	3.031	3.101	3.142
Mon-20-Sep-10	2.960	2.949	2.997	3.041	2.905	2.944	2.890	3.037	3.120	3.150
Mon-27-Sep-10	2.951	2.946	3.004	3.034	2.904	2.928	2.883	3.014	3.121	3.139
Mon-04-Oct-10	3.000	2.997	3.040	3.095	2.952	2.990	2.920	3.024	3.165	3.179
Mon-11-Oct-10	3.066	3.065	3.118	3.178	3.011	3.055	2.982	3.085	3.239	3.215
Mon-18-Oct-10	3.073	3.072	3.140	3.188	3.016	3.063	2.979	3.112	3.249	3.232
Mon-25-Oct-10	3.067	3.064	3.136	3.180	3.008	3.048	2.985	3.128	3.243	3.229
Mon-01-Nov-10	3.067	3.063	3.147	3.181	3.005	3.049	2.982	3.141	3.242	3.237
Mon-08-Nov-10	3.116	3.114	3.170	3.225	3.061	3.102	3.030	3.199	3.273	3.279
Mon-15-Nov-10	3.184	3.187	3.230	3.303	3.133	3.167	3.100	3.278	3.329	3.339
Mon-22-Nov-10	3.171	3.172	3.235	3.293	3.115	3.156	3.087	3.265	3.316	3.340
Mon-29-Nov-10	3.162	3.166	3.237	3.288	3.108	3.144	3.078	3.272	3.300	3.328
Mon-06-Dec-10	3.197	3.206	3.315	3.328	3.144	3.175	3.132	3.276	3.321	3.352
Mon-13-Dec-10	3.231	3.248	3.373	3.364	3.187	3.205	3.163	3.285	3.361	3.403
Mon-20-Dec-10	3.248	3.260	3.375	3.381	3.197	3.229	3.183	3.290	3.366	3.407
Mon-27-Dec-10	3.294	3.313	3.406	3.428	3.256	3.278	3.226	3.311	3.405	3.470

Week ending	Weekly On-Highway Diesel Prices									
	Average All Types (\$dollars/gal, including all taxes)									
Week ending	United States	East Coast	New England	Central Atlantic	Lower Atlantic	Mid West	Gulf Coast	Rocky Mtn	West Coast	California
Mon-03-Jan-11	3.331	3.357	3.427	3.470	3.303	3.303	3.279	3.332	3.443	3.507
Mon-10-Jan-11	3.333	3.364	3.450	3.478	3.308	3.302	3.284	3.334	3.445	3.516
Mon-17-Jan-11	3.407	3.448	3.560	3.556	3.392	3.371	3.366	3.374	3.509	3.562
Mon-24-Jan-11	3.430	3.480	3.609	3.590	3.421	3.392	3.382	3.388	3.531	3.602
Mon-31-Jan-11	3.438	3.494	3.633	3.611	3.432	3.399	3.384	3.396	3.533	3.612
Mon-07-Feb-11	3.513	3.565	3.717	3.682	3.501	3.475	3.455	3.459	3.630	3.707
Mon-14-Feb-11										
Mon-21-Feb-11										
Mon-28-Feb-11										
Mon-07-Mar-11										
Mon-14-Mar-11										
Mon-21-Mar-11										
Mon-28-Mar-11										
Mon-04-Apr-11										
Mon-11-Apr-11										
Mon-18-Apr-11										
Mon-25-Apr-11										
Mon-02-May-11										
Mon-09-May-11										
Mon-16-May-11										
Mon-23-May-11										
Mon-30-May-11										
Mon-06-Jun-11										
Mon-13-Jun-11										
Mon-20-Jun-11										
Mon-27-Jun-11										
Mon-04-Jul-11										
Mon-11-Jul-11										
Mon-18-Jul-11										
Mon-25-Jul-11										
Mon-01-Aug-11										
Mon-08-Aug-11										
Mon-15-Aug-11										
Mon-22-Aug-11										
Mon-29-Aug-11										
Mon-05-Sep-11										
Mon-12-Sep-11										
Mon-19-Sep-11										
Mon-26-Sep-11										
Mon-03-Oct-11										
Mon-10-Oct-11										
Mon-17-Oct-11										
Mon-24-Oct-11										
Mon-31-Oct-11										
Mon-07-Nov-11										
Mon-14-Nov-11										
Mon-21-Nov-11										
Mon-28-Nov-11										
Mon-05-Dec-11										
Mon-12-Dec-11										
Mon-19-Dec-11										
Mon-26-Dec-11										

U. S. Petroleum Administrative for Defense Districts (PADDs)

