



## MONTHLY PETROLEUM DEMAND-EXPORT TRENDS

### A Fundamental Petroleum Trends Monthly Report

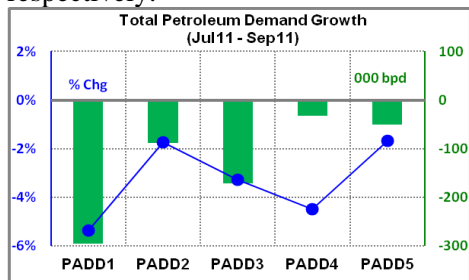
Lehi German Tel: 816.505.0980 [www.fundamentalpetroleumtrends.com](http://www.fundamentalpetroleumtrends.com) Friday, December 09, 2011

#### Wholesale Petroleum Demand

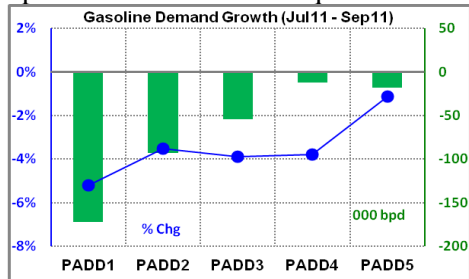
Wholesale demand for all petroleum products, including finished and unfinished products decreased -639,000 bpd compared to the prior year for the July 2011 through September 2011 quarter, a -3.3% decline.

U. S. Petroleum Demand			
Product	Jul - Sep Avg	Chg prev Yr	% Chg
Gasoline	8,873	-349	-3.8%
Distillate	3,780	27	0.7%
Jet Fuel	1,479	0	0.0%
Residual Fuel	372	-156	-29.5%
Propane	957	-19	-1.9%
Total Petroleum	18,834	-639	-3.3%

A gasoline demand decrease of -349,000 bpd was the largest contributor to the decline in total petroleum demand for the quarter. Total petroleum demand decreased -5.4%, and -4.5% in PADDs 1 and 4; respectively.



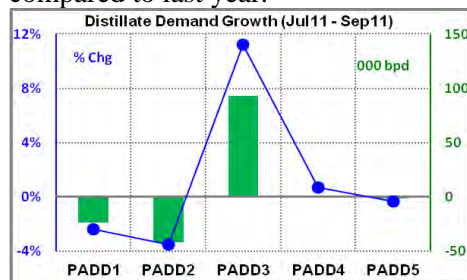
Gasoline wholesale demand decreased -349,000 bpd compared to the prior year for the July 2011 through September 2011 quarter, a -3.8% decrease. Demand fell over -340,000 bpd in each month of the quarter.



Gasoline demand decreased by more than -3.5% in all regional markets other than the West Coast for the quarter compared to a year ago. The West Coast demand was nearly unchanged.

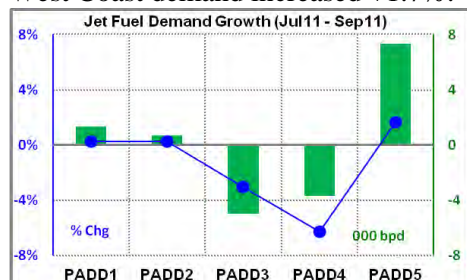
Distillate wholesale demand increased +27,000 bpd over the prior year for the

July 2011 through September 2011 quarter, a +0.7% increase. Demand increased +43,000 bpd in September compared to last year.



Demand increased +11% in PADD 3, with the Rockies and West Coast nearly unchanged. Demand fell -3.5% and -2.4% in PADDs 2 and 1; respectively for the quarter.

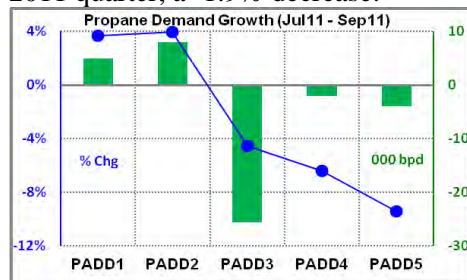
Jet fuel wholesale demand was unchanged compared to the prior year in the July 2011 through September 2011 quarter. Demand declined -6.3% in PADD 4 and -3.1% in PADD 3. West Coast demand increased +1.7%.



Residual fuel oil wholesale demand decreased -156,000 bpd versus the prior year for the July 2011 through September 2011 quarter, a -30% decrease.

Demand declined -84,000 bpd in both PADDs' 1 and 3 for the quarter. Other regions were nearly unchanged.

Propane wholesale demand decreased -19,000 bpd compared to the prior year for the July 2011 through September 2011 quarter, a -1.9% decrease.



Demand decreased -26,000 bpd in

PADD 3. Other regions were nearly unchanged for the quarter.

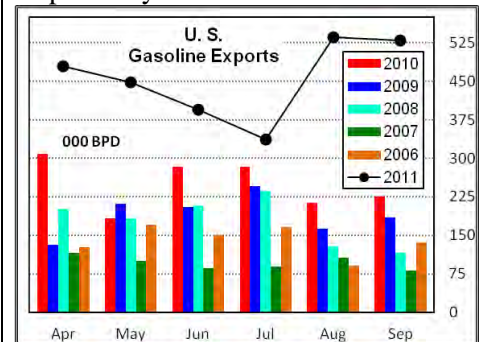
The level of demand in PADDs 1 and 2 matched pre recession levels. Demand remains below pre recession levels in other regions.

#### Petroleum Product Exports

Exports of refined fuels and propane were 2.15 million bpd in September 2011, up +573,000 bpd from September 2010.

U. S. Exports of Petroleum Products			
Product	Jul - Sep Avg	Chg prev Yr	% Chg
Gasoline	467	226	94.0%
Distillate	905	160	21.4%
Jet Fuel	101	18	22.2%
Residual Fuel	471	34	7.7%
Propane	117	15	15.1%

Gasoline exports averaged 467,000 bpd in the July 2011 through September 2011 quarter, a +94% year-on-year increase. Distillate exports averaged 905,000 bpd for the quarter, a +21% increase. Jet fuel and propane exports increased +22% and +15%; respectively.

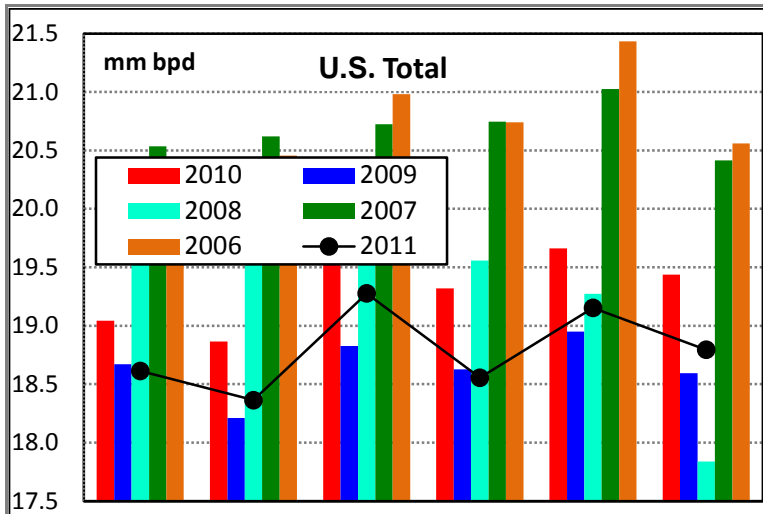


The 2.15 million bpd of exports for the combined 5-major fuels during September 2011, exceeded last year by +573,000 bpd (+36%). The rate of growth in exports during September was up +3% from the prior month.

Exports of gasoline during the July 2011 to September 2011 quarter were equal to 6% of domestic demand; distillate, 24%; jet fuel, 6.8%; residual fuel oil, 127% and propane, 12%.

Because exports are concentrated in coastal refining centers, the share of production exported from these local markets is significantly higher than the national average.

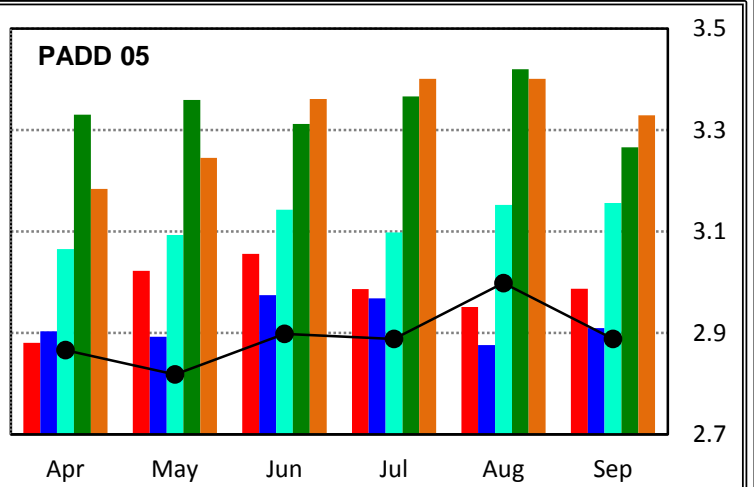
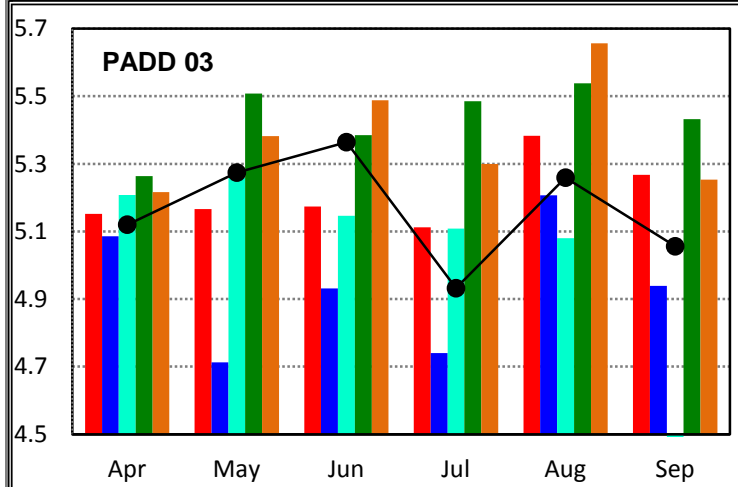
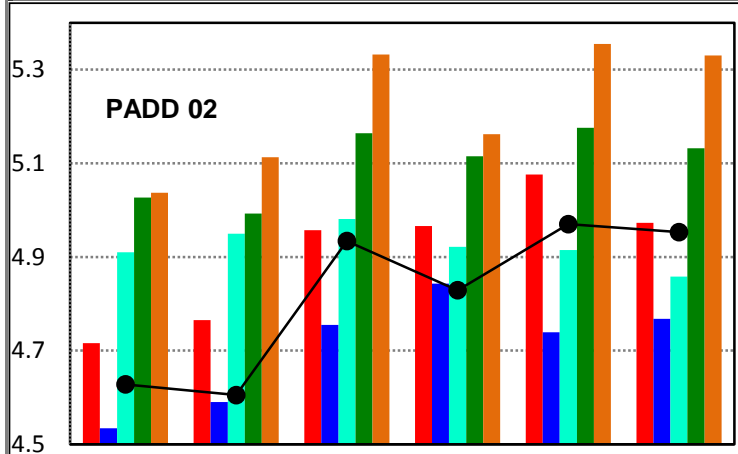
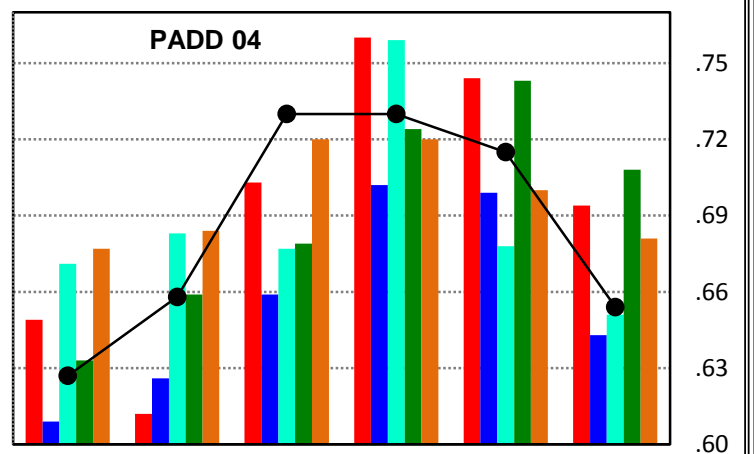
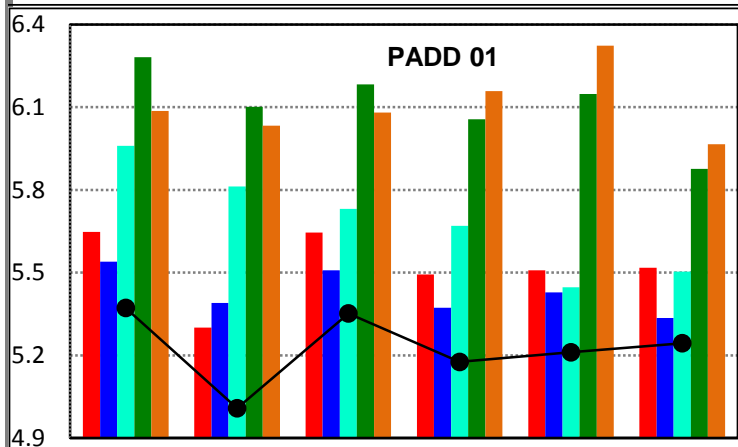
### Total Petroleum Demand



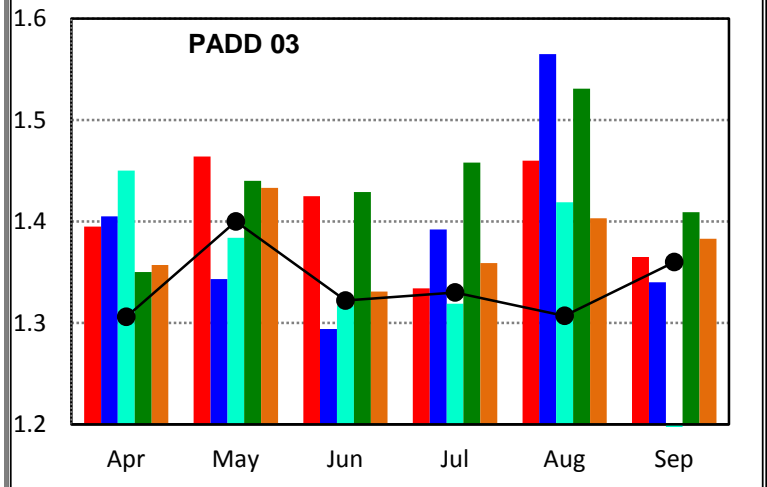
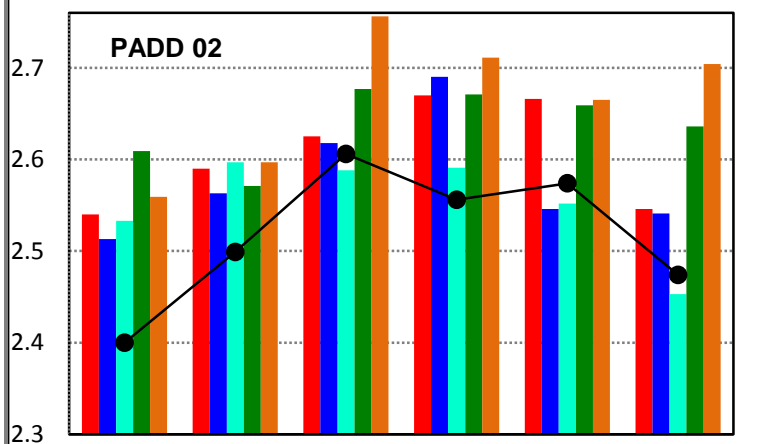
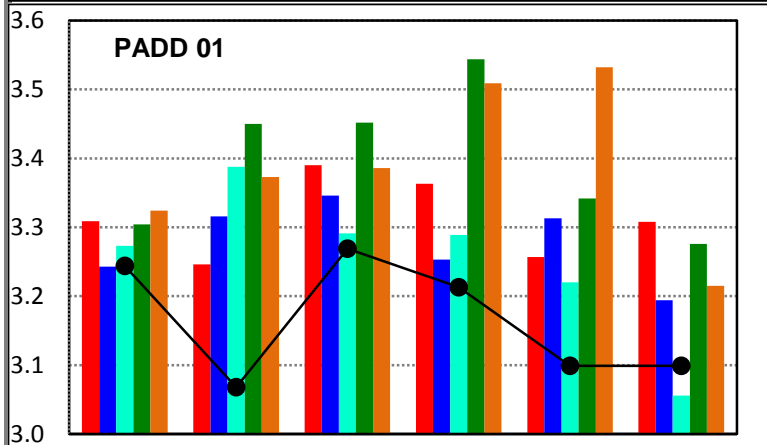
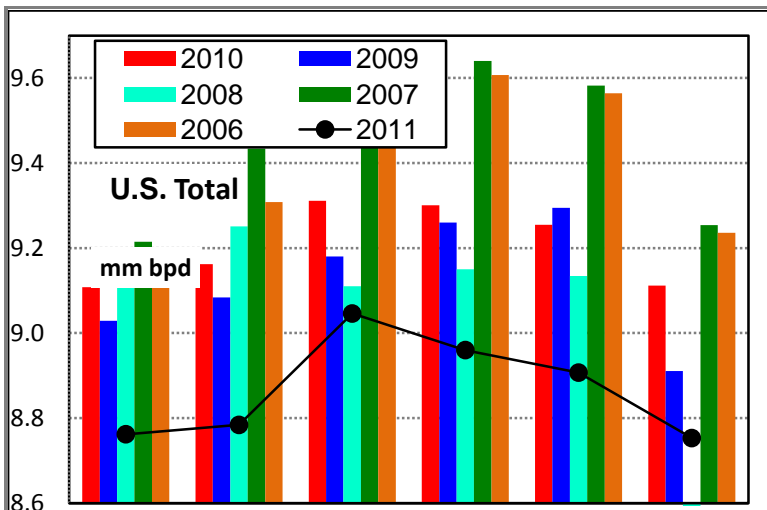
### Demand for all Petroleum Products

Source: EIA Monthly Petroleum Supply

	000 bpd						Latest Qtr Avg
	Apr11	May11	Jun11	Jul11	Aug11	Sep11	
<b>U. S.</b>	18,613	18,363	19,277	18,555	19,153	18,795	18,834
Ch prev Yr	-431	-503	-260	-764	-509	-643	-639
% chg	-2.3%	-2.7%	-1.3%	-4.0%	-2.6%	-3.3%	-3.3%
<b>PADD 01</b>	5,372	5,008	5,352	5,176	5,211	5,244	5,210
Ch prev Yr	-276	-293	-294	-317	-297	-274	-296
% chg	-4.9%	-5.5%	-5.2%	-5.8%	-5.4%	-5.0%	-5.4%
<b>PADD 02</b>	4,628	4,605	4,934	4,829	4,970	4,953	4,917
Ch prev Yr	-88	-160	-23	-137	-106	-20	-88
% chg	-1.9%	-3.4%	-0.5%	-2.8%	-2.1%	-0.4%	-1.8%
<b>PADD 03</b>	5,120	5,274	5,364	4,932	5,259	5,056	5,082
Ch prev Yr	-32	108	190	-180	-124	-211	-172
% chg	-0.6%	2.1%	3.7%	-3.5%	-2.3%	-4.0%	-3.3%
<b>PADD 04</b>	627	658	730	730	715	654	700
Ch prev Yr	-22	46	27	-30	-29	-40	-33
% chg	-3.4%	7.5%	3.8%	-3.9%	-3.9%	-5.8%	-4.5%
<b>PADD 05</b>	2,866	2,818	2,898	2,888	2,998	2,888	2,925
Ch prev Yr	-14	-204	-158	-98	47	-99	-50
% chg	-0.5%	-6.8%	-5.2%	-3.3%	1.6%	-3.3%	-1.7%



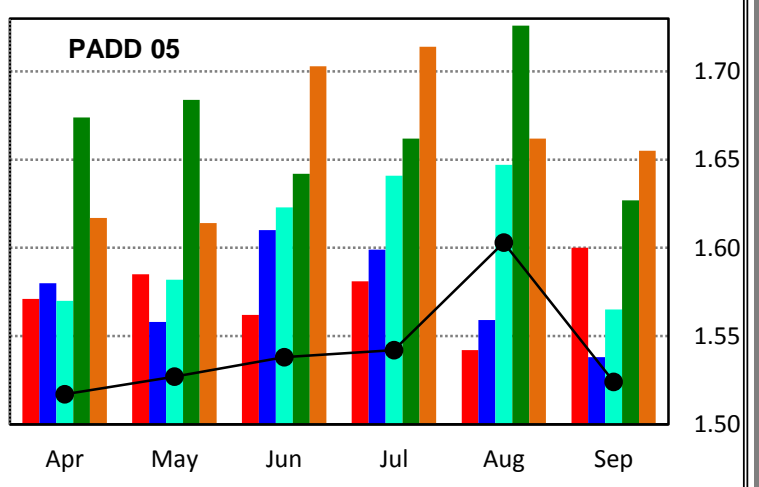
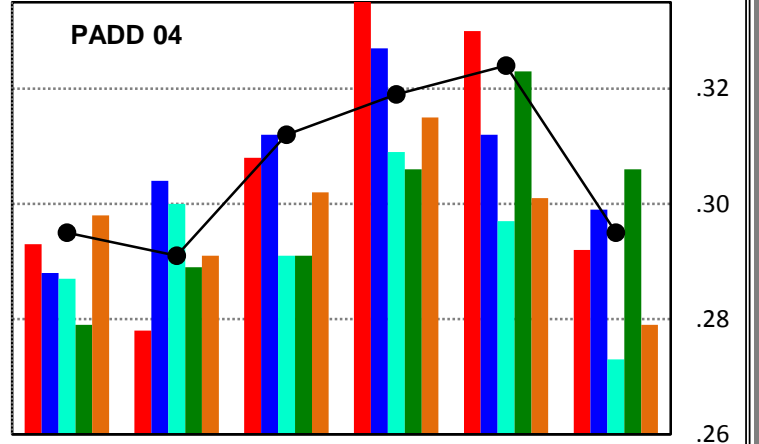
### Gasoline Demand



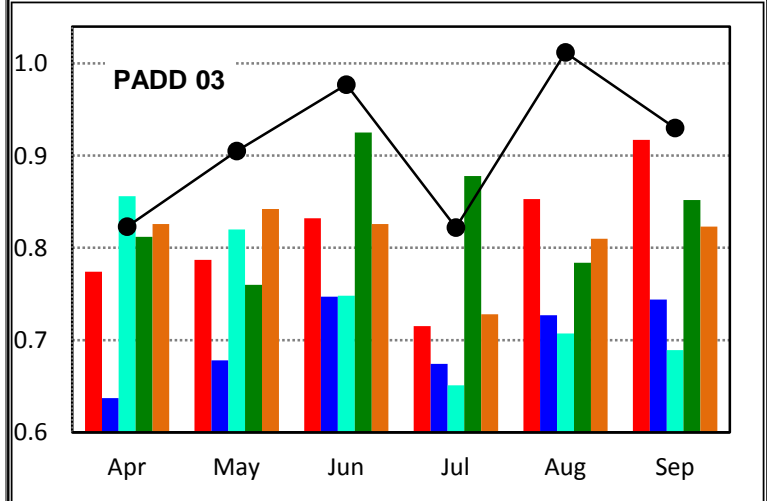
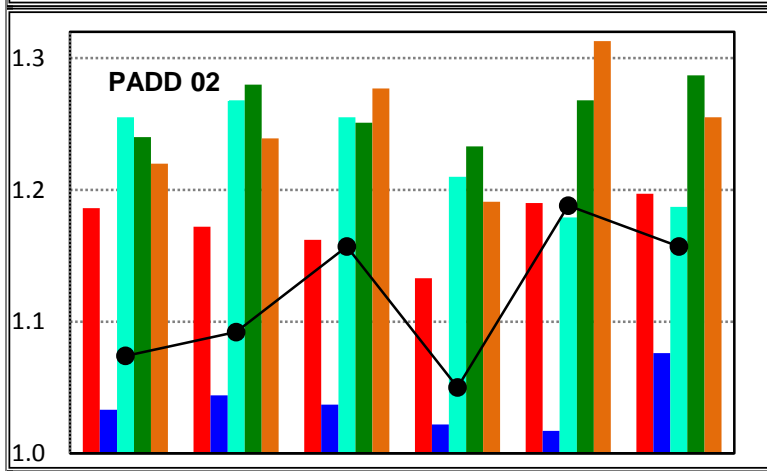
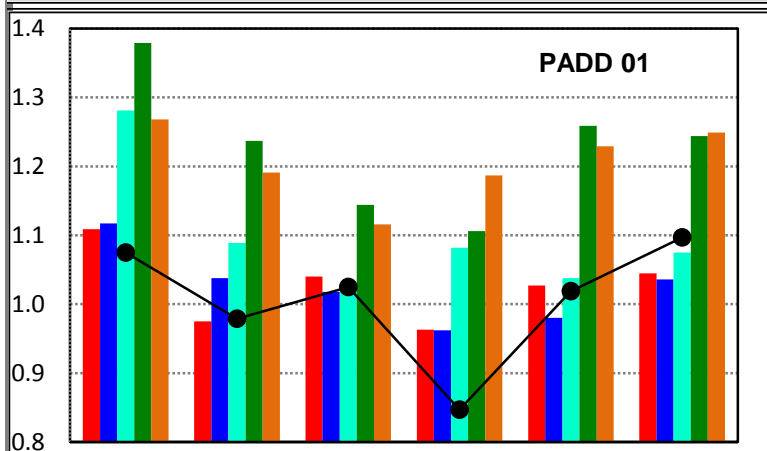
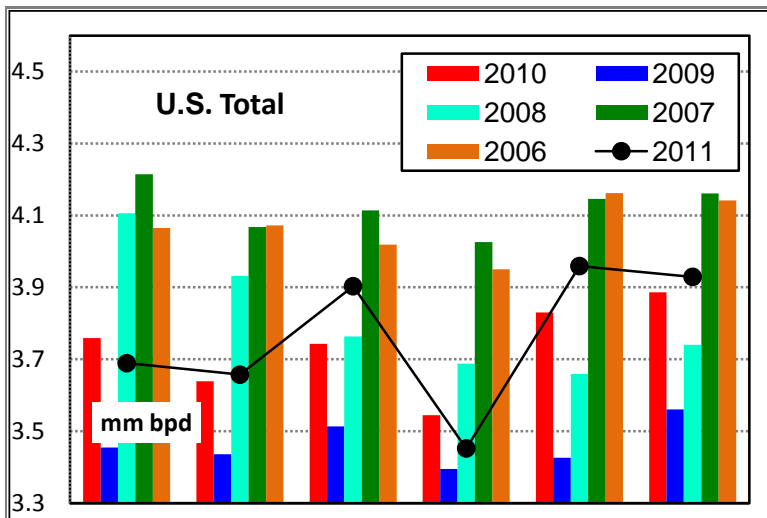
#### Demand for Gasoline

Source: EIA Monthly Petroleum Supply

	000 bpd						Latest Qtr Avg
	Apr11	May11	Jun11	Jul11	Aug11	Sep11	
<b>U. S.</b>	8,762	8,784	9,046	8,960	8,907	8,753	8,873
Ch prev Yr	-346	-378	-265	-341	-348	-359	-349
% chg	-3.8%	-4.1%	-2.8%	-3.7%	-3.8%	-3.9%	-3.8%
<b>PADD 01</b>	3,244	3,068	3,269	3,213	3,099	3,099	3,137
Ch prev Yr	-65	-178	-121	-150	-158	-209	-172
% chg	-2.0%	-5.5%	-3.6%	-4.5%	-4.9%	-6.3%	-5.2%
<b>PADD 02</b>	2,400	2,499	2,606	2,556	2,574	2,474	2,535
Ch prev Yr	-140	-91	-19	-114	-92	-72	-93
% chg	-5.5%	-3.5%	-0.7%	-4.3%	-3.5%	-2.8%	-3.5%
<b>PADD 03</b>	1,306	1,400	1,322	1,330	1,307	1,360	1,332
Ch prev Yr	-89	-64	-103	-4	-153	-5	-54
% chg	-6.4%	-4.4%	-7.2%	-0.3%	-10.5%	-0.4%	-3.9%
<b>PADD 04</b>	295	291	312	319	324	295	313
Ch prev Yr	2	13	4	-34	-6	3	-12
% chg	0.7%	4.7%	1.3%	-9.6%	-1.8%	1.0%	-3.8%
<b>PADD 05</b>	1,517	1,527	1,538	1,542	1,603	1,524	1,556
Ch prev Yr	-54	-58	-24	-39	61	-76	-18
% chg	-3.4%	-3.7%	-1.5%	-2.5%	4.0%	-4.8%	-1.1%



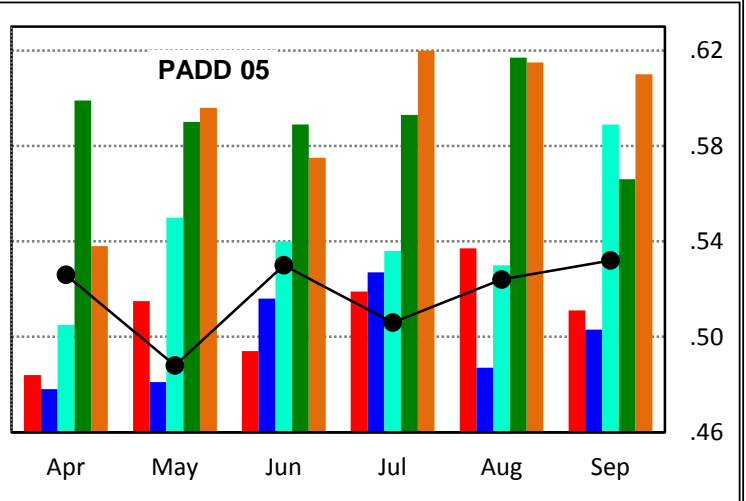
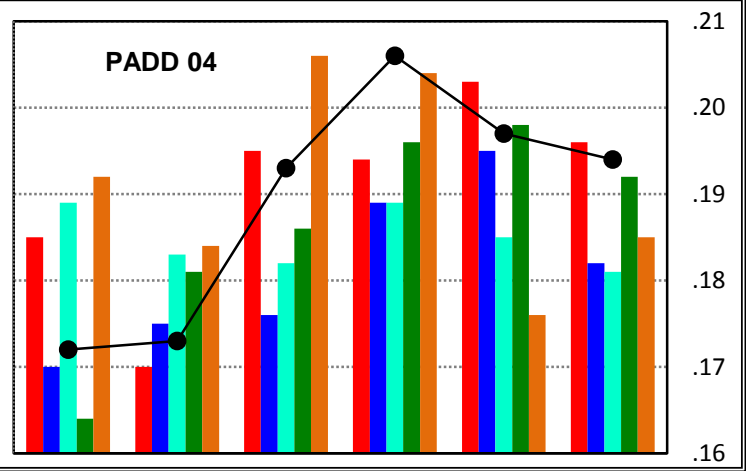
### Distillate Demand



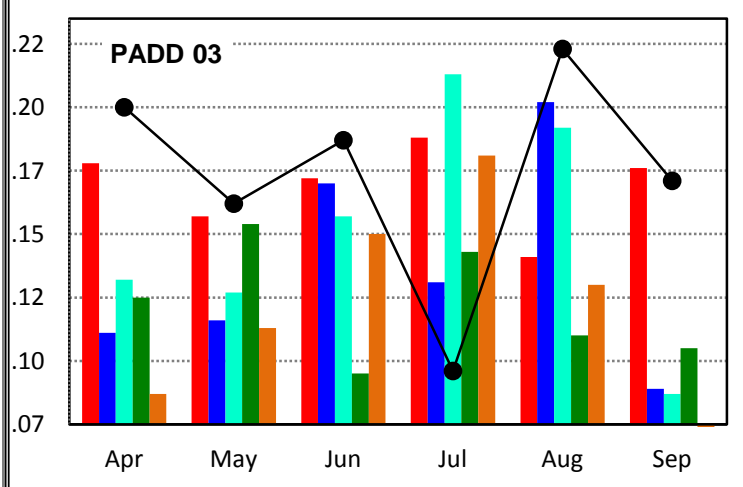
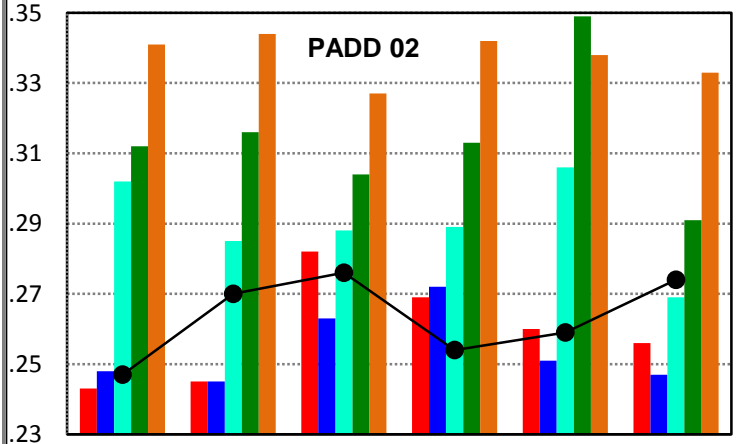
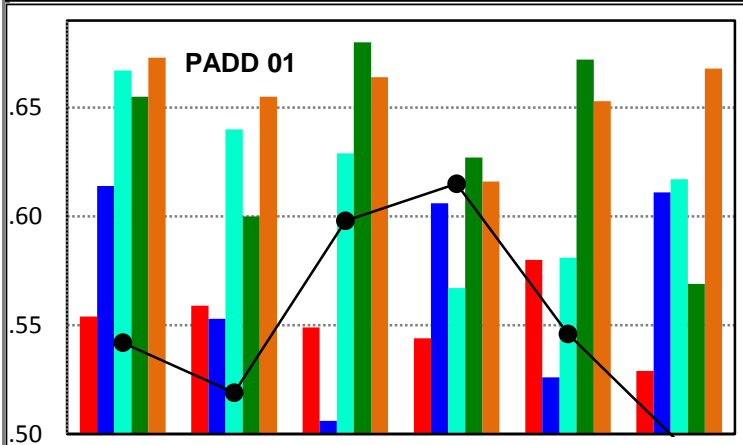
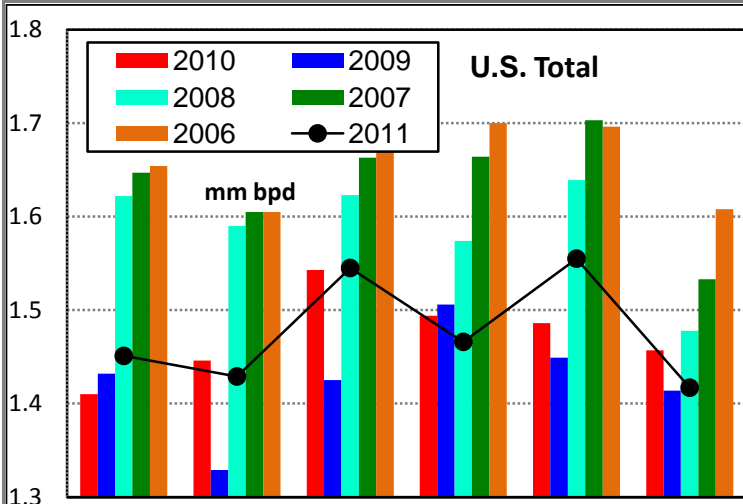
### Demand for Distillate

Source: EIA Monthly Petroleum Supply

	000 bpd						Latest Qtr Avg
	Apr11	May11	Jun11	Jul11	Aug11	Sep11	
<b>U. S.</b>	3,689	3,657	3,903	3,452	3,959	3,929	3,780
Ch prev Yr	-70	18	160	-92	129	43	27
% chg	-1.9%	0.5%	4.3%	-2.6%	3.4%	1.1%	0.7%
<b>PADD 01</b>	1,075	979	1,025	847	1,019	1,097	988
Ch prev Yr	-34	4	-15	-116	-8	52	-24
% chg	-3.1%	0.4%	-1%	-12.0%	-0.8%	5.0%	-2.4%
<b>PADD 02</b>	1,094	1,112	1,177	1,070	1,208	1,177	1,152
Ch prev Yr	-112	-80	-5	-83	-2	-40	-42
% chg	-9.3%	-6.7%	-0.4%	-7.2%	-0.2%	-3.3%	-3.5%
<b>PADD 03</b>	823	905	977	822	1,012	930	921
Ch prev Yr	49	118	145	107	159	13	93
% chg	6.3%	15.0%	17%	15.0%	18.6%	1.4%	11.2%
<b>PADD 04</b>	172	173	193	206	197	194	199
Ch prev Yr	-13	3	-2	12	-6	-2	1
% chg	-7.0%	1.8%	-1.0%	6.2%	-3.0%	-1.0%	0.7%
<b>PADD 05</b>	526	488	530	506	524	532	521
Ch prev Yr	42	-27	36	-13	-13	21	-2
% chg	8.7%	-5.2%	7.3%	-2.5%	-2.4%	4.1%	-0.3%



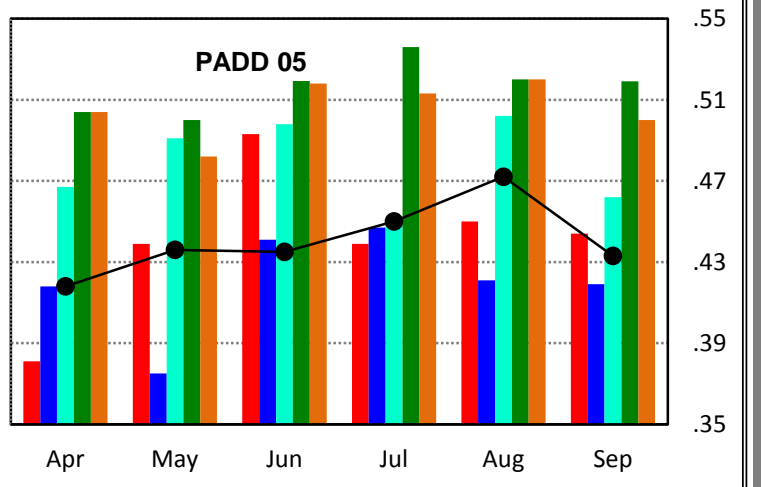
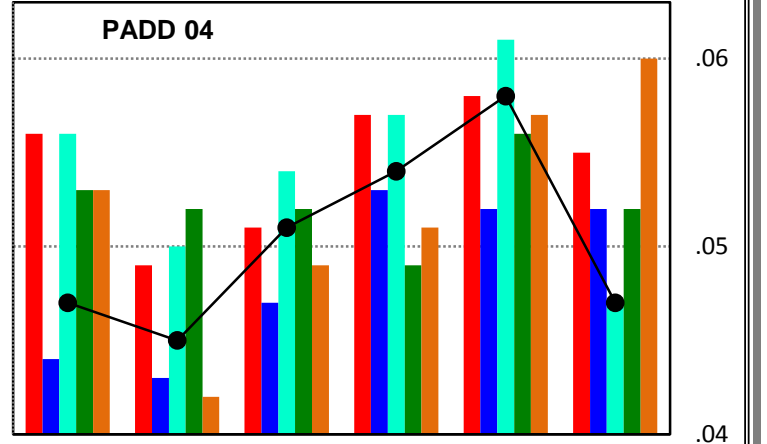
### Jet Fuel Demand



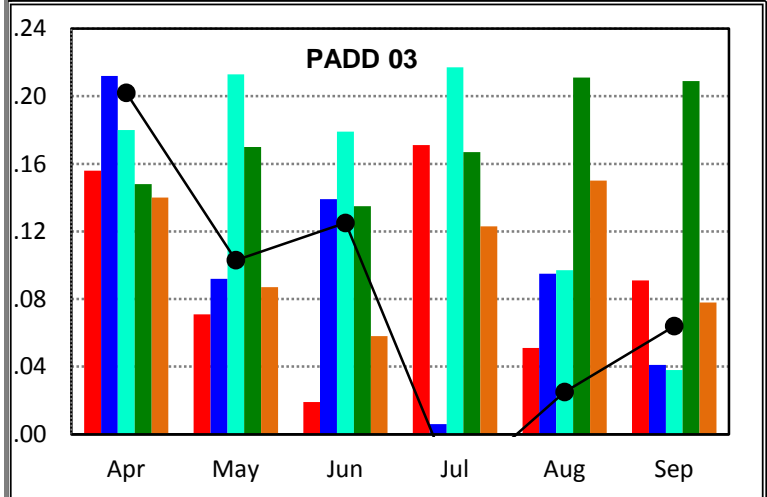
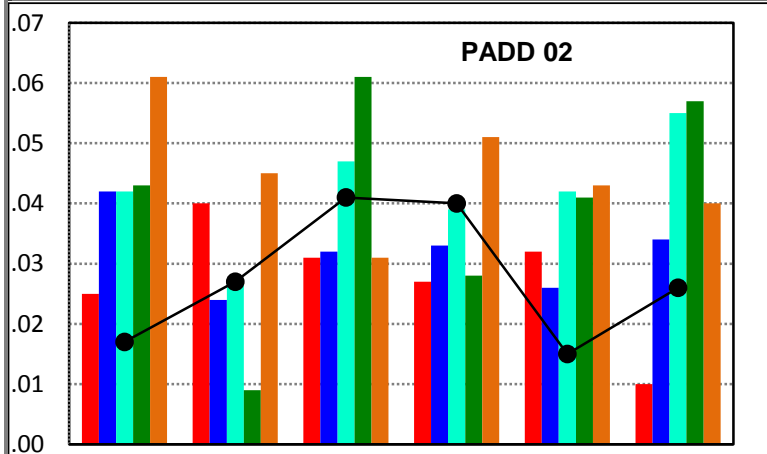
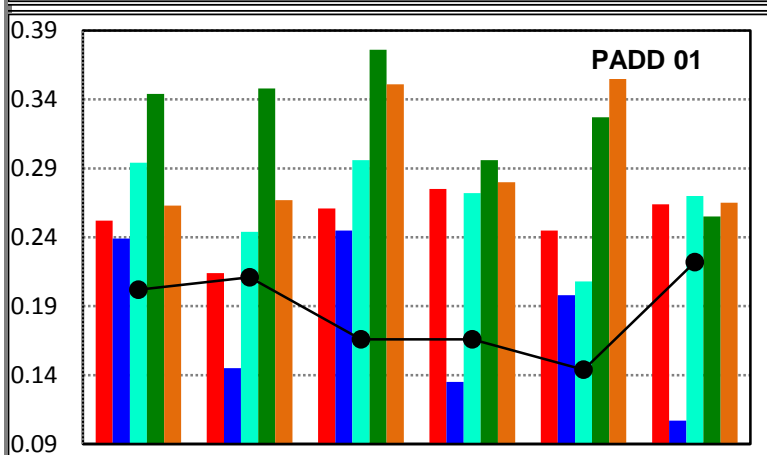
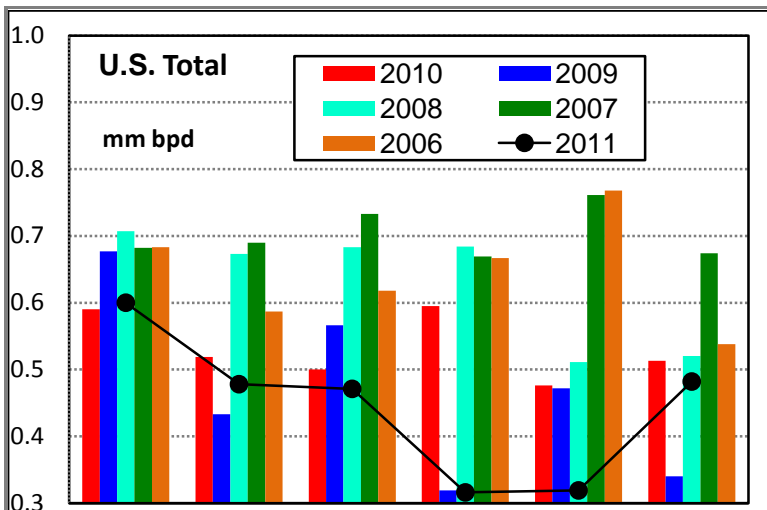
### Demand for Jet Fuel

Source: EIA Monthly Petroleum Supply

	000 bpd						Latest Qtr Avg
	Apr11	May11	Jun11	Jul11	Aug11	Sep11	
<b>U. S.</b>	1,451	1,429	1,545	1,466	1,555	1,417	1,479
Ch prev Yr	41	-17	2	-28	69	-40	0
% chg	2.9%	-1.2%	0.1%	-1.9%	4.6%	-2.7%	0.0%
<b>PADD 01</b>	542	519	598	615	546	496	552
Ch prev Yr	-12	-40	49	71	-34	-33	1
% chg	-2.2%	-7.2%	9%	13.1%	-5.9%	-6.2%	0.2%
<b>PADD 02</b>	247	270	276	254	259	274	262
Ch prev Yr	4	25	-6	-15	-1	18	1
% chg	1.6%	10.2%	-2.1%	-5.6%	-0.4%	7.0%	0.3%
<b>PADD 03</b>	195	157	182	91	218	166	158
Ch prev Yr	22	5	15	-92	82	-5	-5
% chg	12.7%	3.3%	9%	-50%	60.3%	-3%	-3.1%
<b>PADD 04</b>	49	47	53	56	60	49	55
Ch prev Yr	-9	-4	0	-3	0	-8	-4
% chg	-15.5%	-7.8%	0%	-5.1%	0.0%	-14.0%	-6.3%
<b>PADD 05</b>	418	436	435	450	472	433	452
Ch prev Yr	37	-3	-58	11	22	-11	7
% chg	9.7%	-0.7%	-11.8%	2.5%	4.9%	-2.5%	1.7%



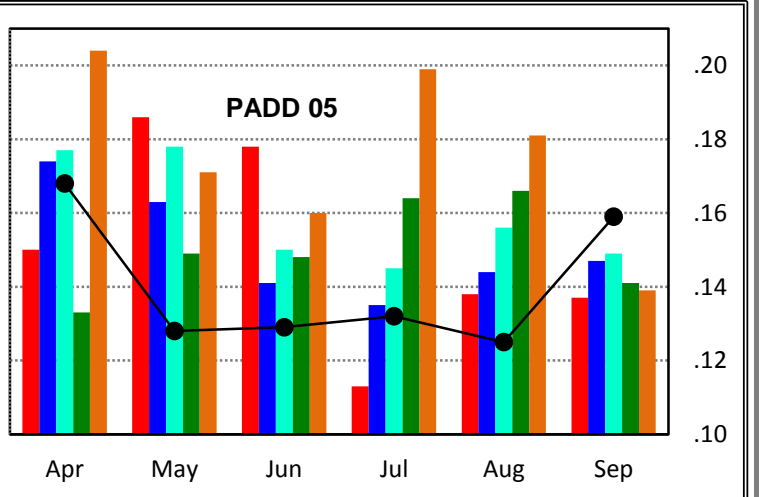
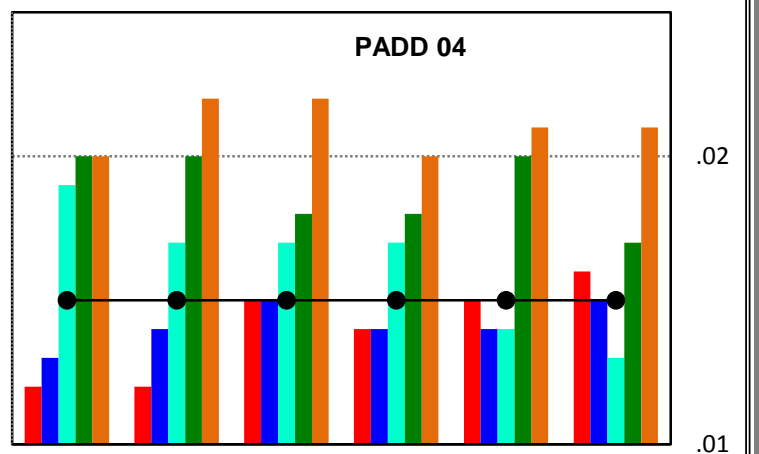
### Residual Fuel Demand



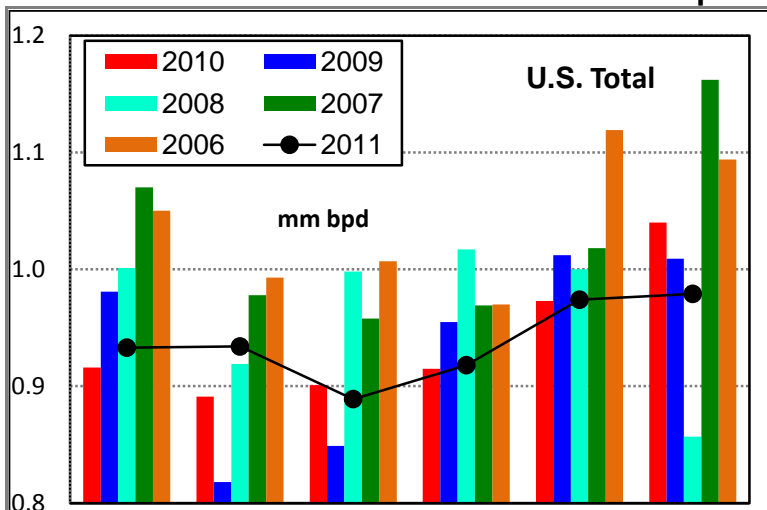
### Demand for Residual Fuel Oil

Source: EIA Monthly Petroleum Supply

	000 bpd						Latest Qtr Avg
	Apr11	May11	Jun11	Jul11	Aug11	Sep11	
<b>U. S.</b>	600	478	471	316	319	482	372
Ch prev Yr	10	-41	-29	-279	-157	-31	-156
% chg	1.7%	-7.9%	-5.8%	-46.9%	-33.0%	-6.0%	-29.5%
<b>PADD 01</b>	202	211	166	166	144	222	177
Ch prev Yr	-50	-3	-95	-109	-101	-42	-84
% chg	-19.8%	-1.4%	-36%	-40%	-41.2%	-15.9%	-32.1%
<b>PADD 02</b>	17	27	41	40	15	26	27
Ch prev Yr	-8	-13	10	13	-17	16	4
% chg	-32.0%	-32.5%	32%	48.1%	-53.1%	160%	17.4%
<b>PADD 03</b>	202	103	125	-32	25	64	19
Ch prev Yr	46	32	106	-203	-26	-27	-85
% chg	29%	45%	558%	-119%	-51%	-30%	-81.8%
<b>PADD 04</b>	10	10	10	10	10	10	10
Ch prev Yr	3	3	0	1	0	-1	0
% chg	42.9%	42.9%	0.0%	11.1%	0.0%	-9.1%	0.0%
<b>PADD 05</b>	168	128	129	132	125	159	139
Ch prev Yr	18	-58	-49	19	-13	22	9
% chg	12.0%	-31.2%	-28%	16.8%	-9.4%	16.1%	7.2%



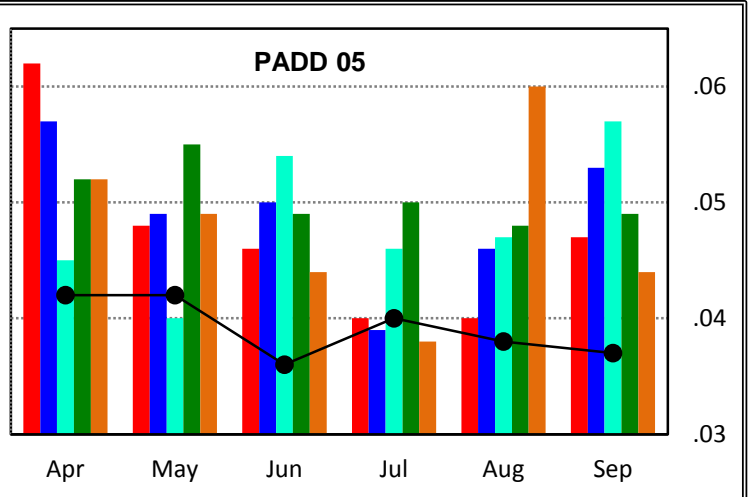
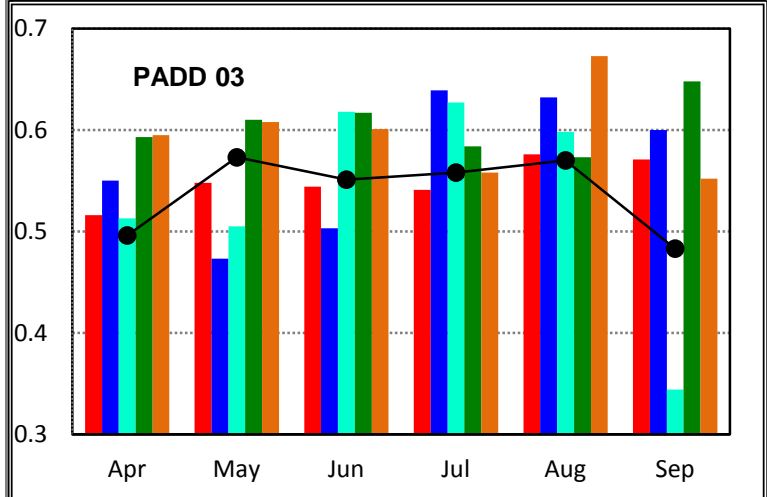
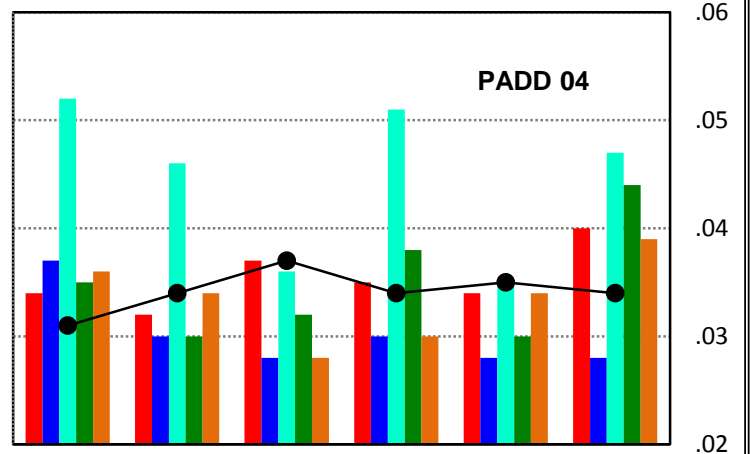
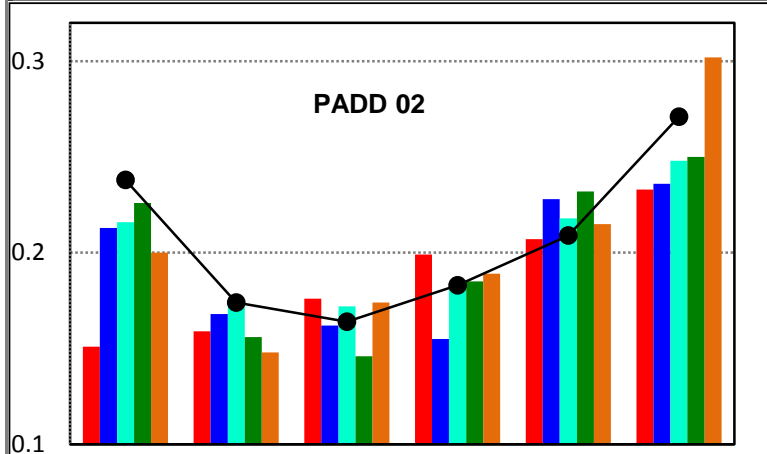
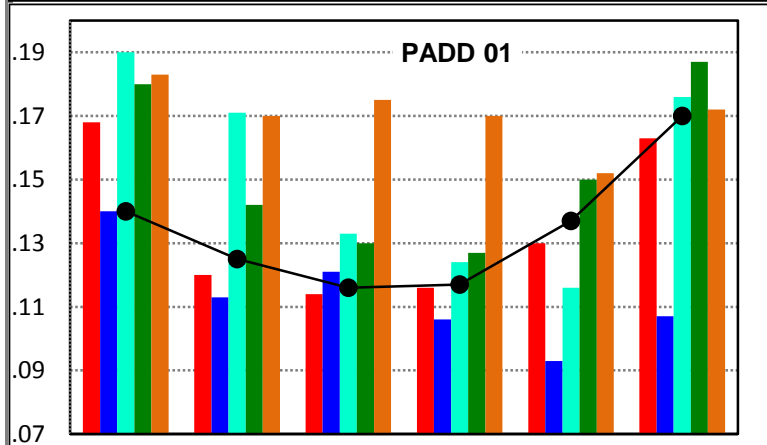
### Propane Demand



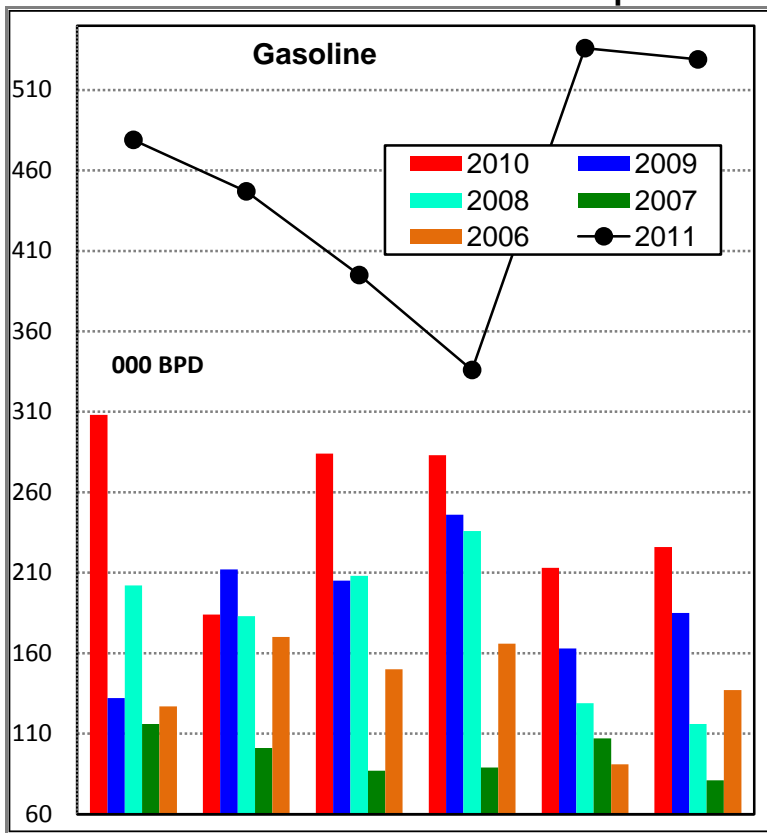
#### Demand for Propane

Source: EIA Monthly Petroleum Supply

	000 bpd						Latest Qtr Avg
	Apr11	May11	Jun11	Jul11	Aug11	Sep11	
<b>U. S.</b>	933	934	889	918	974	979	957
Ch prev Yr	17	43	-12	3	1	-61	-19
% chg	1.9%	4.8%	-1%	0.3%	0.1%	-5.9%	-1.9%
<b>PADD 01</b>	140	125	116	117	137	170	141
Ch prev Yr	-28	5	2	1	7	7	5
% chg	-16.7%	4.2%	2%	0.9%	5.4%	4.3%	3.7%
<b>PADD 02</b>	228	164	154	173	199	261	211
Ch prev Yr	87	15	-12	-16	2	38	8
% chg	61.7%	10.1%	-7%	-8.5%	1.0%	17.0%	3.9%
<b>PADD 03</b>	496	573	551	558	570	483	537
Ch prev Yr	-20	25	7	17	-6	-88	-26
% chg	-3.9%	4.6%	1%	3.1%	-1.0%	-15.4%	-4.6%
<b>PADD 04</b>	26	29	32	29	30	29	29
Ch prev Yr	-3	2	0	-1	1	-6	-2
% chg	-10.3%	7.4%	0.0%	-3.3%	3.4%	-17.1%	-6.4%
<b>PADD 05</b>	42	42	36	40	38	37	38
Ch prev Yr	-20	-6	-10	0	-2	-10	-4
% chg	-32.3%	-12.5%	-22%	0.0%	-5.0%	-21.3%	-9.4%



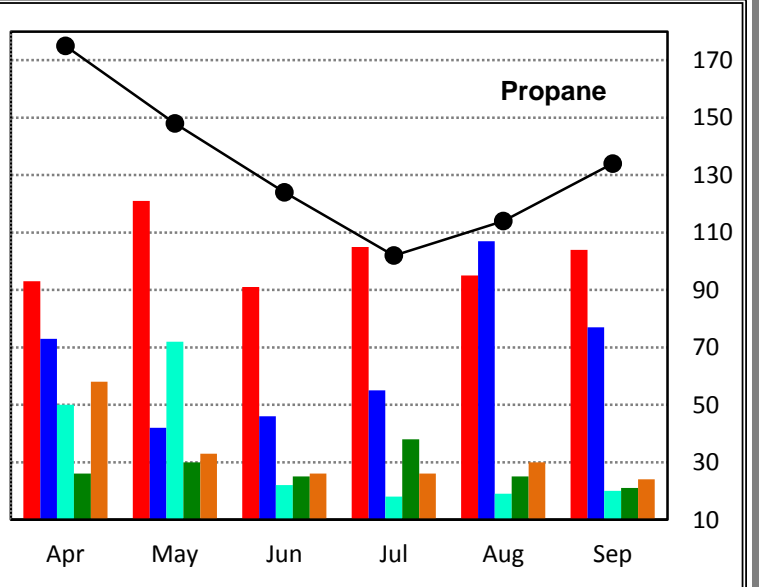
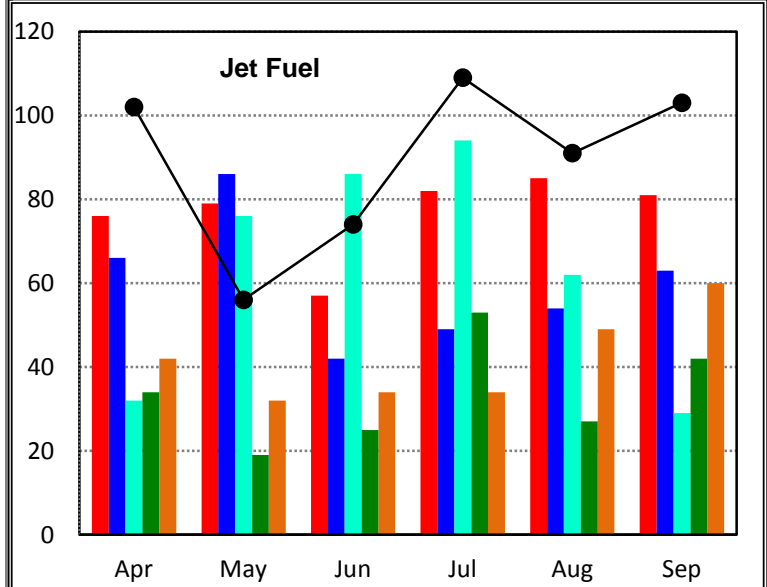
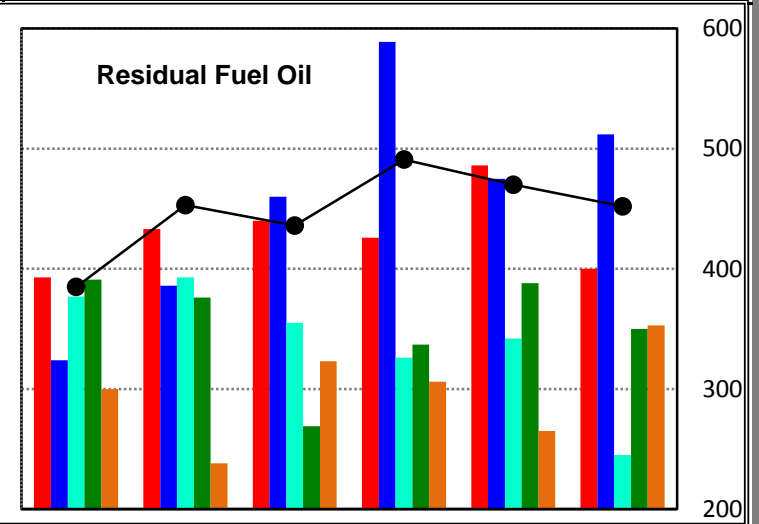
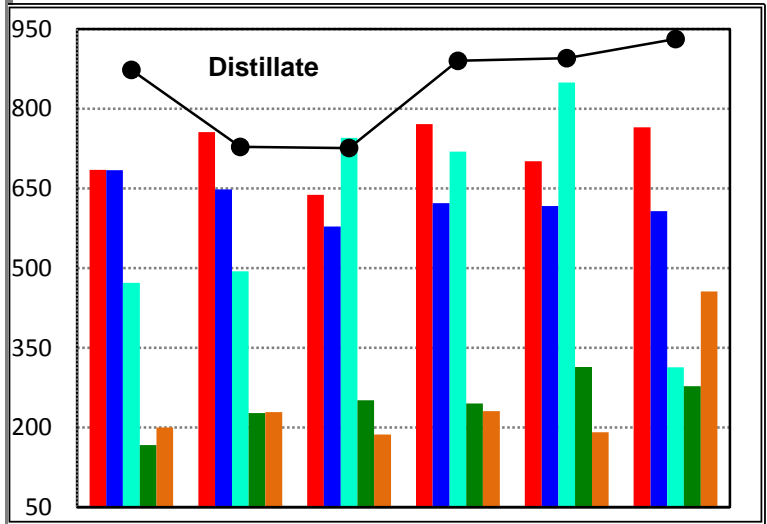
### U.S. Exports of Petroleum Products



#### U. S. Exports of Petroleum Products

Source: EIA Monthly Petroleum Supply

	000 bpd						Latest Qtr Avg
	Apr11	May11	Jun11	Jul11	Aug11	Sep11	
<b>Gasoline</b>	479	447	395	336	536	529	467
Ch prev Yr	171	263	111	53	323	303	226
% chg	55.5%	142.9%	39%	19%	151.6%	134%	94.0%
<b>Distillate</b>	873	728	726	890	895	931	905
Ch prev Yr	188	-28	88	119	194	166	160
% chg	27.4%	-3.7%	14%	15.4%	27.7%	21.7%	21.4%
<b>Jet</b>	102	56	74	109	91	103	101
Ch prev Yr	26	-23	17	27	6	22	18
% chg	34.2%	-29.1%	30%	32.9%	7.1%	27.2%	22.2%
<b>Residual</b>	385	453	436	491	470	452	471
Ch prev Yr	-8	20	-4	65	-16	52	34
% chg	-2.0%	4.6%	-1%	15.3%	-3.3%	13.0%	7.7%
<b>Propane</b>	175	148	124	102	114	134	117
Ch prev Yr	82	27	33	-3	19	30	15
% chg	88.2%	22.3%	36%	-2.9%	20.0%	28.8%	15.1%





# U. S. Petroleum Administrative for Defense Districts (PADDs)

