



MONTHLY PETROLEUM DEMAND-EXPORT TRENDS

A Fundamental Petroleum Trends Monthly Report

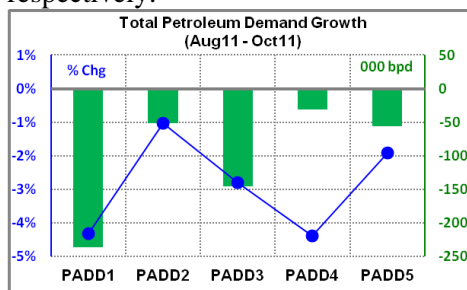
Lehi German Tel: 816.505.0980 www.fundamentalpetroleumtrends.com Monday, January 02, 2012

Wholesale Petroleum Demand

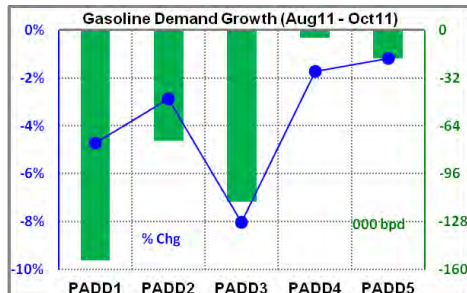
Wholesale demand for all petroleum products, including finished and unfinished products decreased -521,000 bpd compared to the prior year for the August 2011 through October 2011 quarter, a -2.7% decline.

U. S. Petroleum Demand			
Product	Aug - Oct Avg	Chg prev Yr	% Chg
Gasoline	8,761	-367	-4.0%
Distillate	3,944	114	3.0%
Jet Fuel	1,447	-10	-0.7%
Residual Fuel	401	-92	-18.6%
Propane	1,033	-16	-1.5%
Total Petroleum	18,837	-521	-2.7%

A gasoline demand decrease of -367,000 bpd was the largest contributor to the decline in total petroleum demand for the quarter. Total petroleum demand decreased -4.3%, and -2.8% in PADDs 1 and 3; respectively.



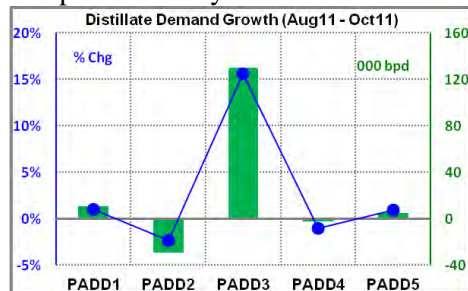
Gasoline wholesale demand decreased -367,000 bpd compared to the prior year for the August 2011 through October 2011 quarter, a -4% decrease. Demand fell nearly -0.4 million bpd in October 2011.



Gasoline demand decreased by more than -1% in all regions for the quarter, including a nearly -5% decrease in the largest region, PADD 1.

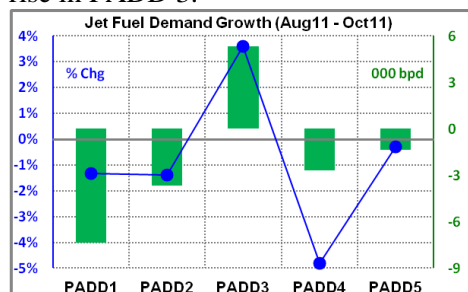
Distillate wholesale demand increased +114,000 bpd over the prior year for the August 2011 through October 2011 quarter, a +3% increase. Demand

increased +171,000 bpd in October compared to last year.



Demand increased +16% in PADD 3, partially offset by a -3% decline in PADD 2. Demand was nearly unchanged in other regions for the quarter.

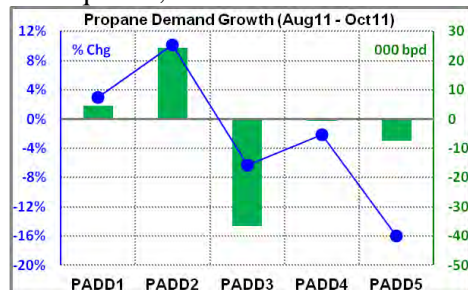
Jet fuel wholesale demand decreased -10,000 bpd compared to the prior year in the August 2011 through October 2011 quarter. Demand declined -4.8% in PADD 4, partially offset by a +3.6% rise in PADD 3.



Residual fuel oil wholesale demand decreased -92,000 bpd versus the prior year for the August 2011 through October 2011 quarter, a -19% decrease.

Demand declined -76,000 bpd in PADD 1 and -28,000 bpd in PADD 3 for the quarter. Other regions were nearly unchanged.

Propane wholesale demand decreased -16,000 bpd compared to the prior year for the August 2011 through October 2011 quarter, a -1.5% decrease.



Demand decreased -37,000 bpd in

PADD 3; partially offset by a +24,000 bpd increase in PADD 2. Other regions were nearly unchanged for the quarter.

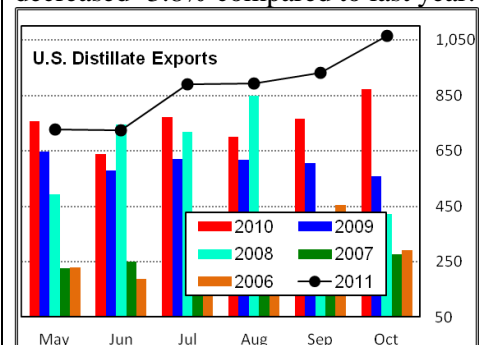
The level of demand in PADD 5 remains significantly below pre recession years.

Petroleum Product Exports

Exports of refined fuels and propane were 2.06 million bpd in October 2011; down -86,000 bpd from the prior month, September 2011.

U. S. Exports of Petroleum Products			
Product	Aug - Oct Avg	Chg prev Yr	% Chg
Gasoline	529	289	119.9%
Distillate	964	184	23.6%
Jet Fuel	91	14	18.3%
Residual Fuel	419	9	2.3%
Propane	102	-4	-3.8%

Gasoline exports averaged 529,000 bpd in the August 2011 through October 2011 quarter, a +120% year-on-year increase. Distillate exports averaged 964,000 bpd for the quarter, a +24% increase. Jet fuel exports increased +18% while propane exports decreased -3.8% compared to last year.

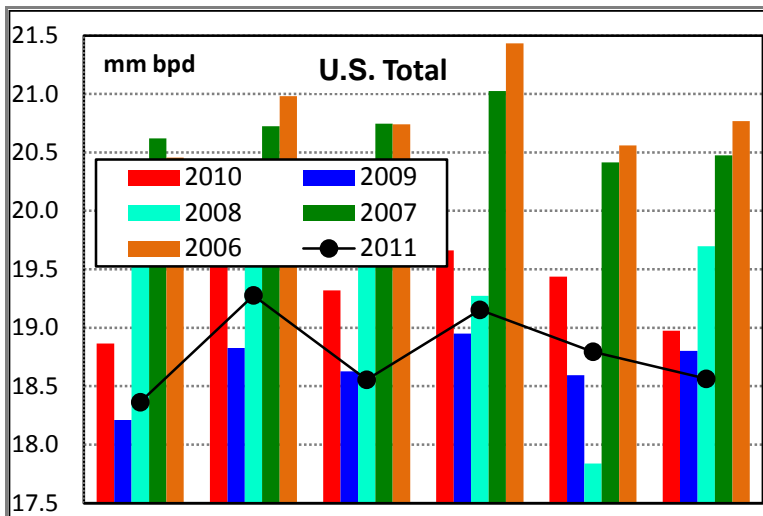


The 2.06 million bpd of exports for the combined 5-major fuels during October 2011, exceeded last year by +378,000 bpd (+22%). Propane and residual fuel oil exports decreased month-on-month in October.

Exports of gasoline during the August 2011 to October 2011 quarter were equal to 6% of domestic demand; distillate, 24%; jet fuel, 6.3%; residual fuel oil, 104% and propane, 10%.

Because exports are concentrated in coastal refining centers, the share of production exported from these local markets is significantly higher than the national average.

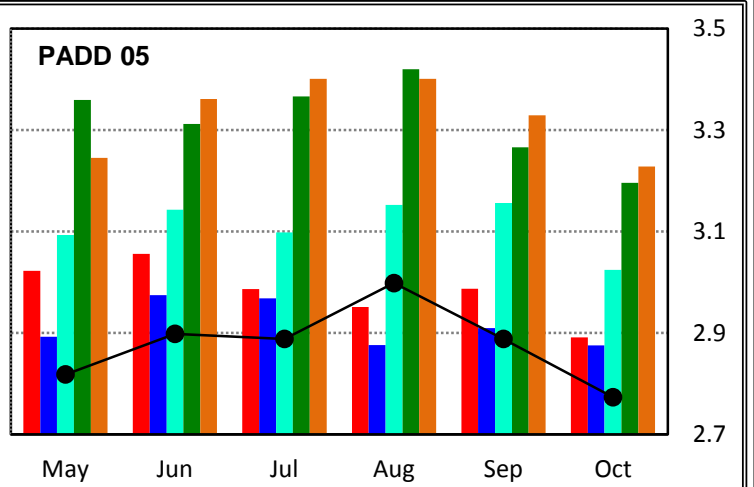
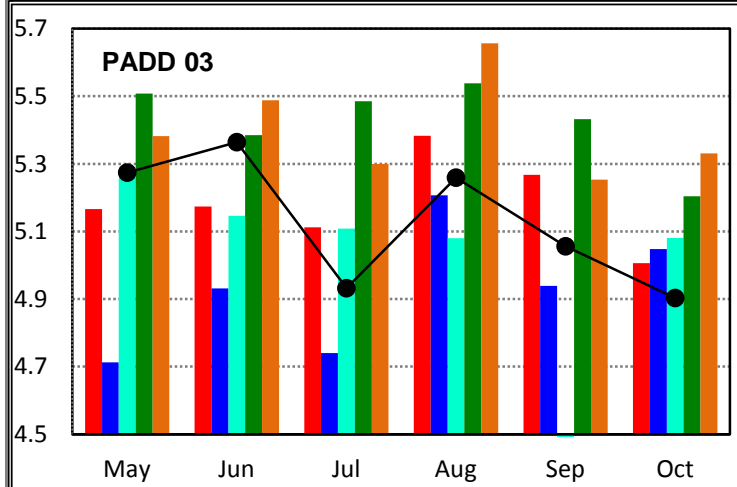
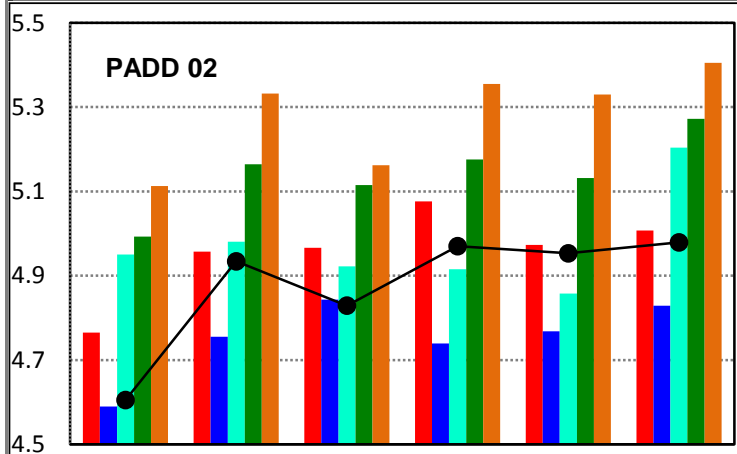
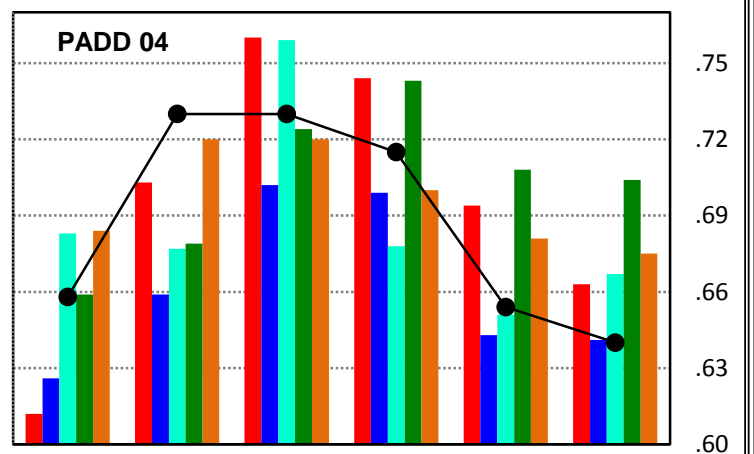
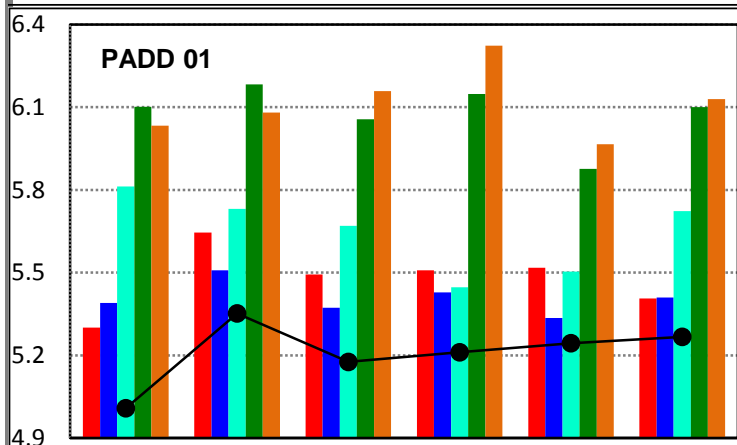
Total Petroleum Demand



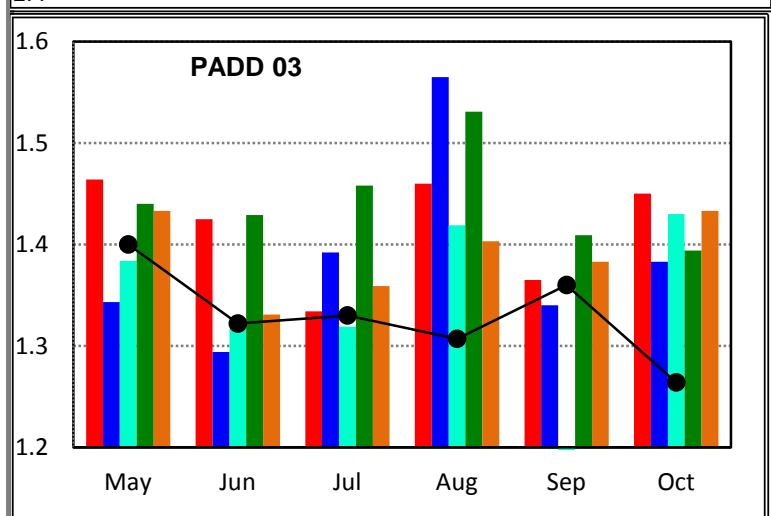
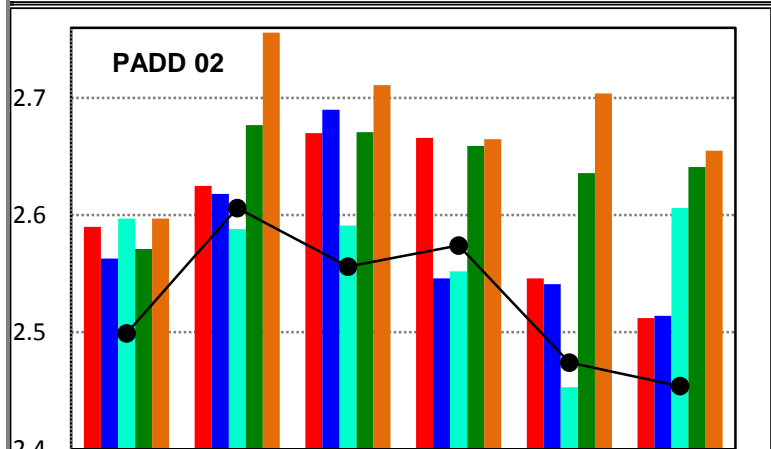
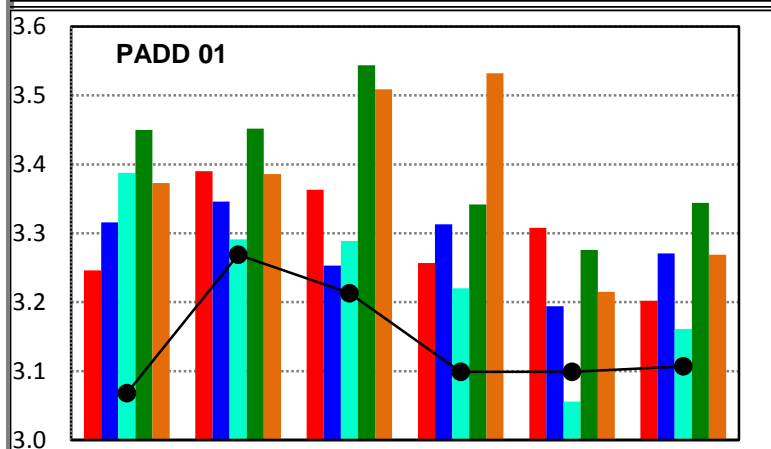
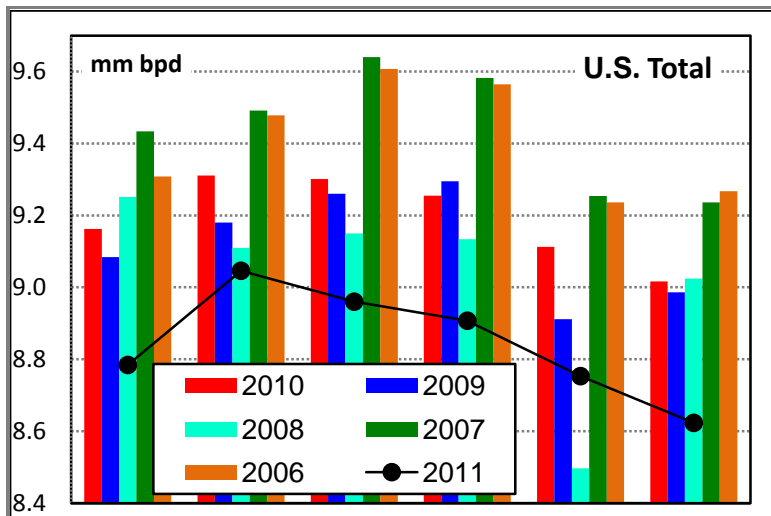
Demand for all Petroleum Products

Source: EIA Monthly Petroleum Supply

	000 bpd						Latest Qtr Avg
	May11	Jun11	Jul11	Aug11	Sep11	Oct11	
U. S.	18,363	19,277	18,555	19,153	18,795	18,563	18,837
Ch prev Yr	-503	-260	-764	-509	-643	-411	-521
% chg	-2.7%	-1.3%	-4.0%	-2.6%	-3.3%	-2.2%	-2.7%
PADD 01	5,008	5,352	5,176	5,211	5,244	5,267	5,241
Ch prev Yr	-293	-294	-317	-297	-274	-139	-237
% chg	-5.5%	-5.2%	-5.8%	-5.4%	-5.0%	-2.6%	-4.3%
PADD 02	4,605	4,934	4,829	4,970	4,953	4,979	4,967
Ch prev Yr	-160	-23	-137	-106	-20	-28	-51
% chg	-3.4%	-0.5%	-2.8%	-2.1%	-0.4%	-0.6%	-1.0%
PADD 03	5,274	5,364	4,932	5,259	5,056	4,903	5,073
Ch prev Yr	108	190	-180	-124	-211	-103	-146
% chg	2.1%	3.7%	-3.5%	-2.3%	-4.0%	-2.1%	-2.8%
PADD 04	658	730	730	715	654	640	670
Ch prev Yr	46	27	-30	-29	-40	-23	-31
% chg	7.5%	3.8%	-3.9%	-3.9%	-5.8%	-3.5%	-4.4%
PADD 05	2,818	2,898	2,888	2,998	2,888	2,773	2,886
Ch prev Yr	-204	-158	-98	47	-99	-118	-57
% chg	-6.8%	-5.2%	-3.3%	1.6%	-3.3%	-4.1%	-1.9%



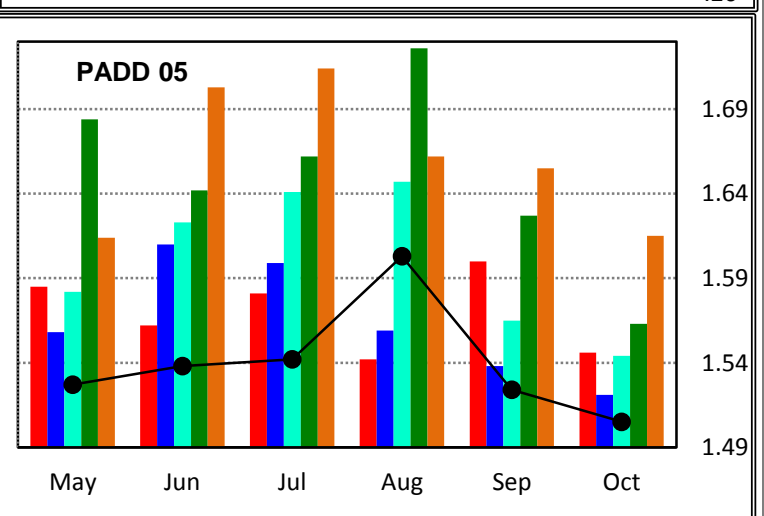
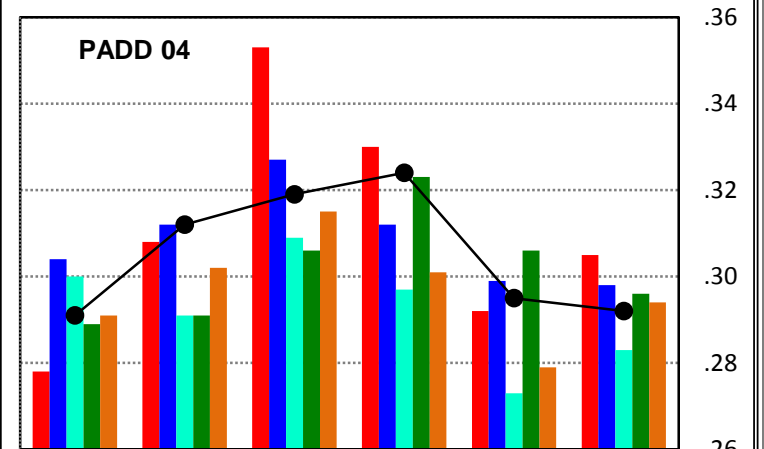
Gasoline Demand



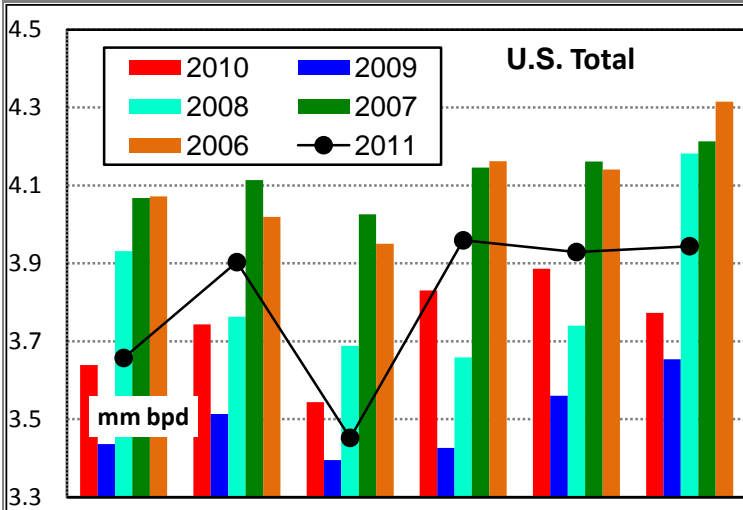
Demand for Gasoline

Source: EIA Monthly Petroleum Supply

	000 bpd						Latest Qtr Avg
	May11	Jun11	Jul11	Aug11	Sep11	Oct11	
U. S.	8,784	9,046	8,960	8,907	8,753	8,623	8,761
Ch prev Yr	-378	-265	-341	-348	-359	-393	-367
% chg	-4.1%	-2.8%	-3.7%	-3.8%	-3.9%	-4.4%	-4.0%
PADD 01	3,068	3,269	3,213	3,099	3,099	3,107	3,102
Ch prev Yr	-178	-121	-150	-158	-209	-95	-154
% chg	-5.5%	-3.6%	-4.5%	-4.9%	-6.3%	-3.0%	-4.7%
PADD 02	2,499	2,606	2,556	2,574	2,474	2,454	2,501
Ch prev Yr	-91	-19	-114	-92	-72	-58	-74
% chg	-3.5%	-0.7%	-4.3%	-3.5%	-2.8%	-2.3%	-2.9%
PADD 03	1,400	1,322	1,330	1,307	1,360	1,264	1,310
Ch prev Yr	-64	-103	-4	-153	-5	-186	-115
% chg	-4.4%	-7.2%	-0.3%	-10.5%	-0.4%	-12.8%	-8.0%
PADD 04	291	312	319	324	295	292	304
Ch prev Yr	13	4	-34	-6	3	-13	-5
% chg	4.7%	1.3%	-9.6%	-1.8%	1.0%	-4.3%	-1.7%
PADD 05	1,527	1,538	1,542	1,603	1,524	1,505	1,544
Ch prev Yr	-58	-24	-39	61	-76	-41	-19
% chg	-3.7%	-1.5%	-2.5%	4.0%	-4.8%	-2.7%	-1.2%



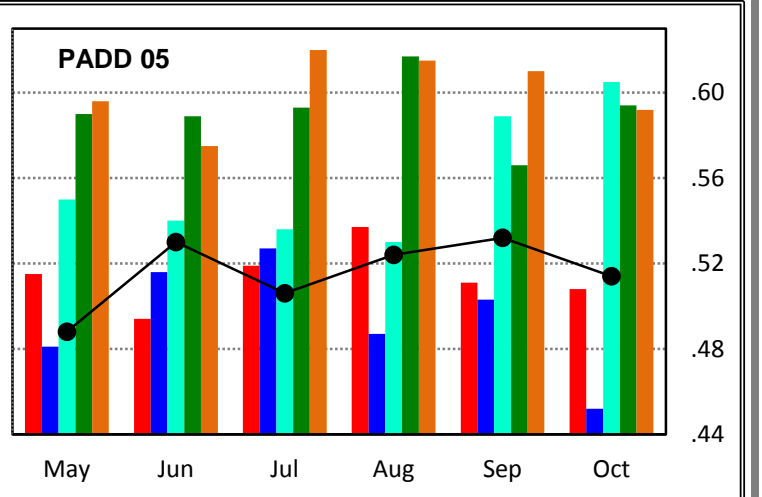
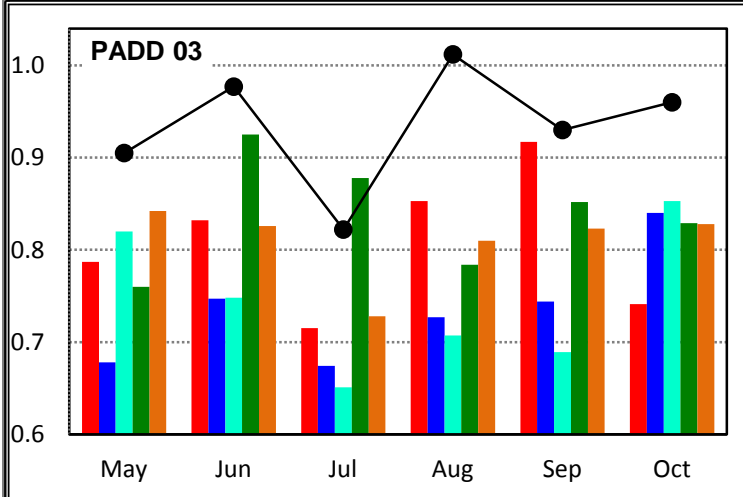
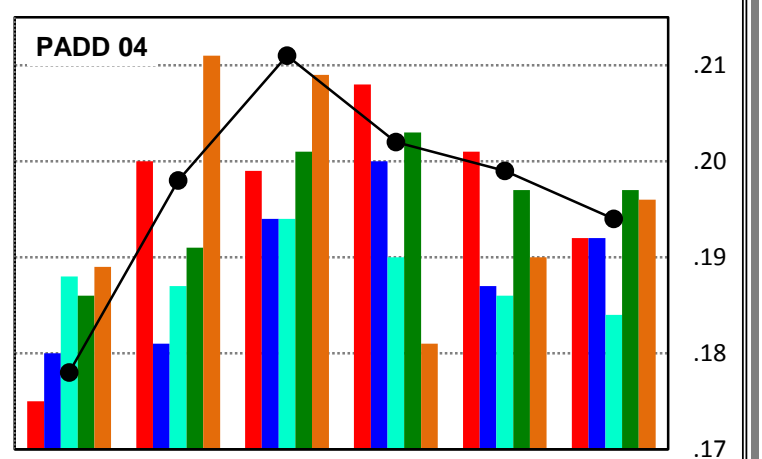
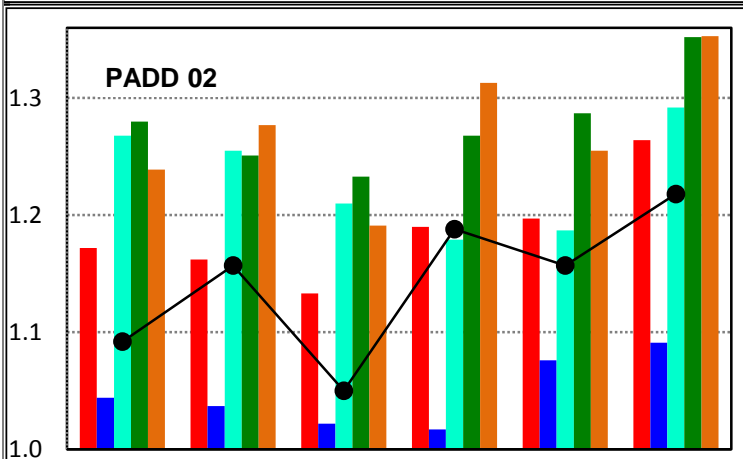
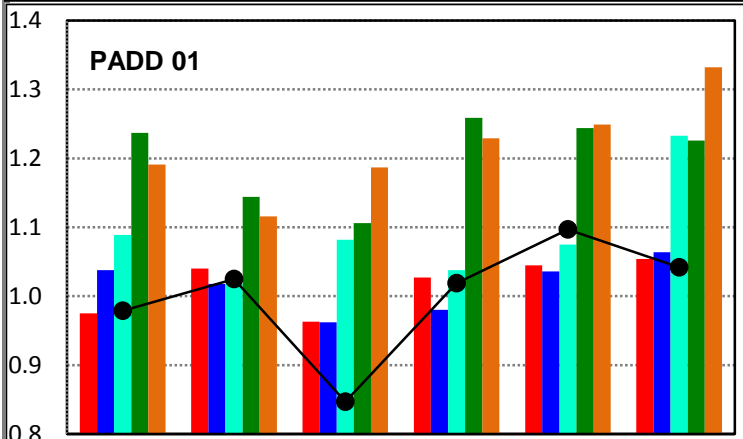
Distillate Demand



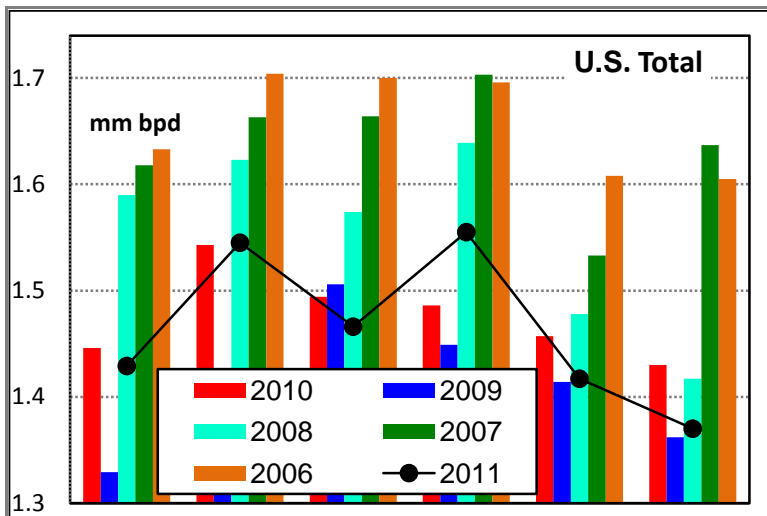
Demand for Distillate

Source: EIA Monthly Petroleum Supply

	000 bpd						Latest Qtr Avg
	May11	Jun11	Jul11	Aug11	Sep11	Oct11	
U. S.	3,657	3,903	3,452	3,959	3,929	3,944	3,944
Ch prev Yr	18	160	-92	129	43	171	114
% chg	0.5%	4.3%	-2.6%	3.4%	1.1%	4.5%	3.0%
PADD 01	979	1,025	847	1,019	1,097	1,042	1,053
Ch prev Yr	4	-15	-116	-8	52	-12	11
% chg	0.4%	-1.4%	-12%	-0.8%	5.0%	-1.1%	1.0%
PADD 02	1,112	1,177	1,070	1,208	1,177	1,238	1,208
Ch prev Yr	-80	-5	-83	-2	-40	-46	-29
% chg	-6.7%	-0.4%	-7.2%	-0.2%	-3.3%	-3.6%	-2.4%
PADD 03	905	977	822	1,012	930	960	967
Ch prev Yr	118	145	107	159	13	219	130
% chg	15.0%	17.4%	15%	18.6%	1.4%	29.6%	15.6%
PADD 04	173	193	206	197	194	189	193
Ch prev Yr	3	-2	12	-6	-2	2	-2
% chg	1.8%	-1.0%	6.2%	-3.0%	-1.0%	1.1%	-1.0%
PADD 05	488	530	506	524	532	514	523
Ch prev Yr	-27	36	-13	-13	21	6	5
% chg	-5.2%	7.3%	-2.5%	-2.4%	4.1%	1.2%	0.9%



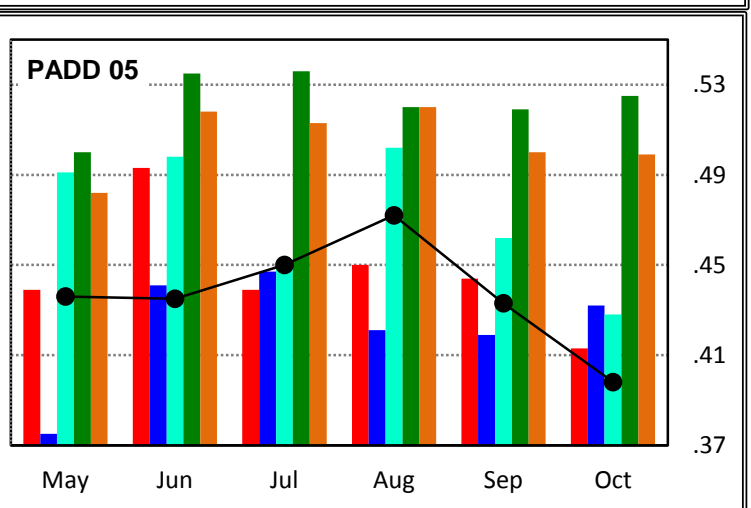
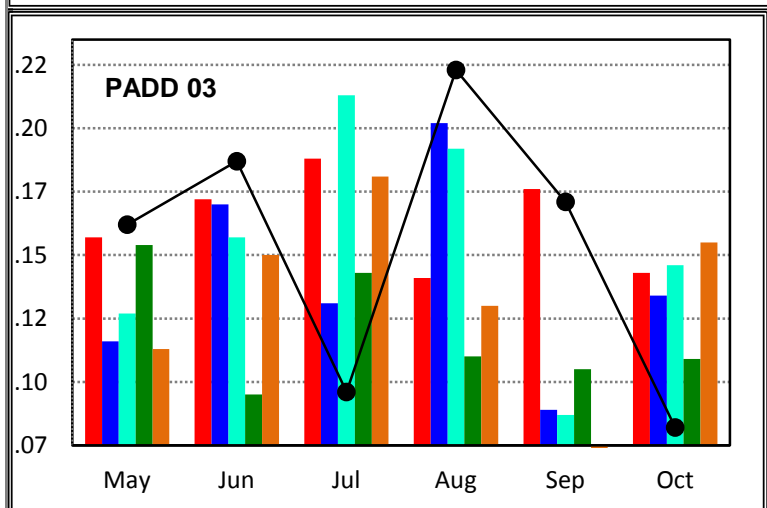
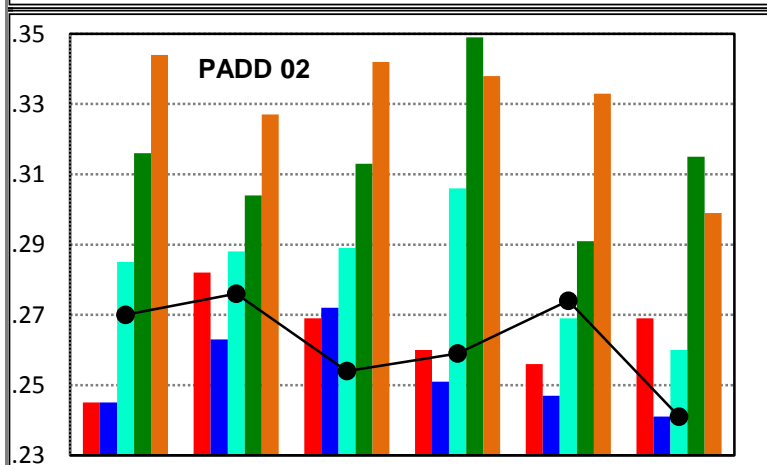
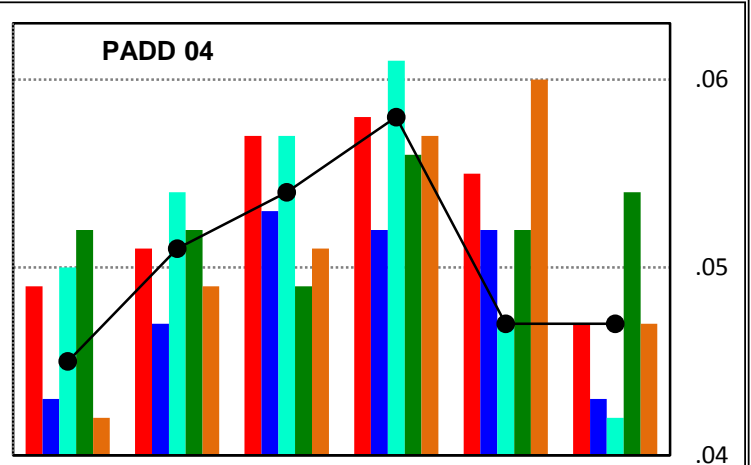
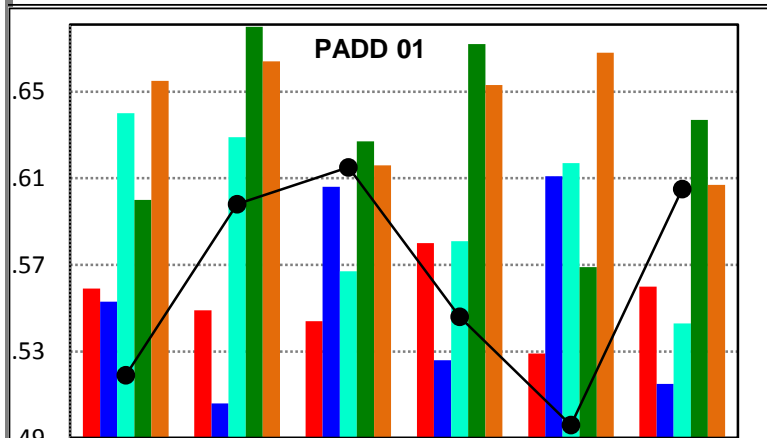
Jet Fuel Demand



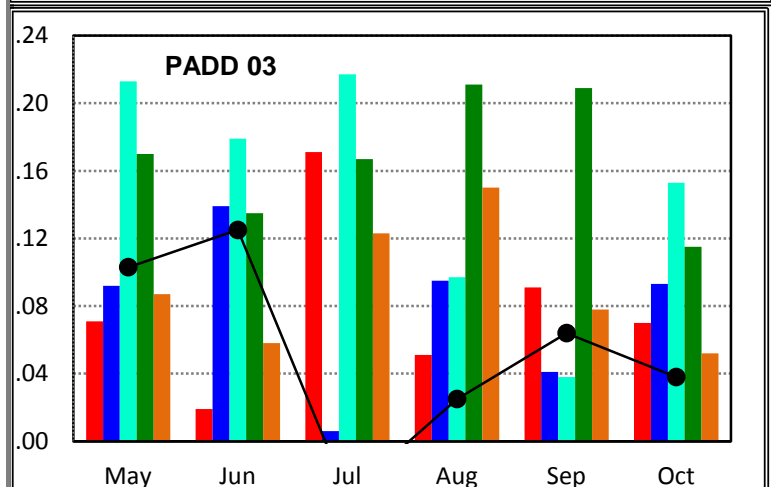
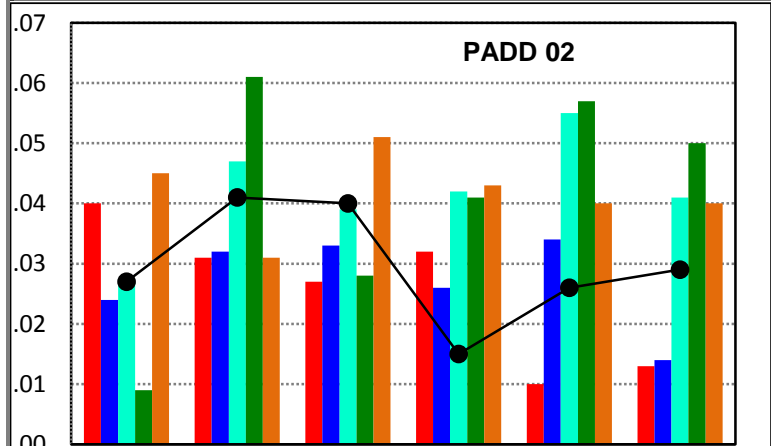
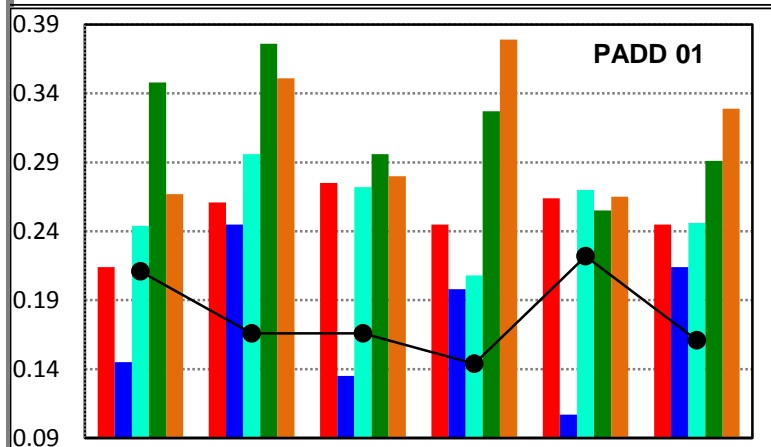
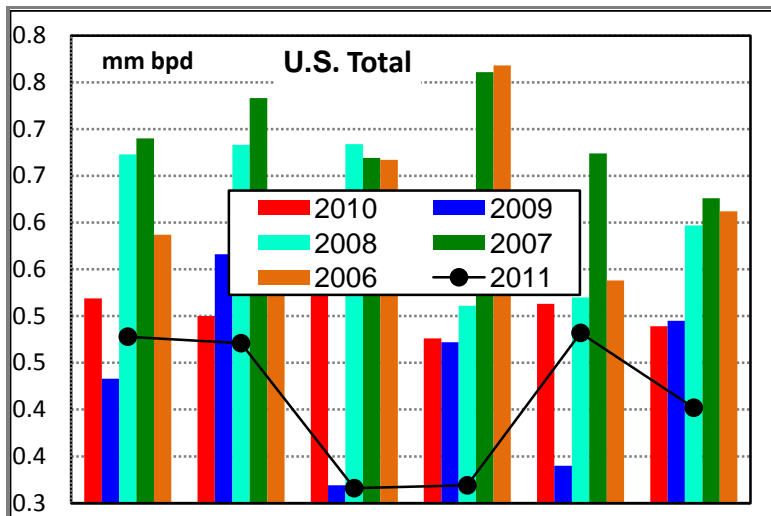
Demand for Jet Fuel

Source: EIA Monthly Petroleum Supply

	000 bpd						Latest Qtr Avg
	May11	Jun11	Jul11	Aug11	Sep11	Oct11	
U. S.	1,429	1,545	1,466	1,555	1,417	1,370	1,447
Ch prev Yr	-17	2	-28	69	-40	-60	-10
% chg	-1.2%	0.1%	-1.9%	4.6%	-2.7%	-4.2%	-0.7%
PADD 01	519	598	615	546	496	605	549
Ch prev Yr	-40	49	71	-34	-33	45	-7
% chg	-7.2%	8.9%	13%	-5.9%	-6.2%	8.0%	-1.3%
PADD 02	270	276	254	259	274	241	258
Ch prev Yr	25	-6	-15	-1	18	-28	-4
% chg	10.2%	-2.1%	-5.6%	-0.4%	7.0%	-10.4%	-1.4%
PADD 03	157	182	91	218	166	77	154
Ch prev Yr	5	15	-92	82	-5	-61	5
% chg	3.3%	9.0%	-50%	60%	-2.9%	-44%	3.6%
PADD 04	47	53	56	60	49	49	53
Ch prev Yr	-4	0	-3	0	-8	0	-3
% chg	-7.8%	0.0%	-5%	0.0%	-14.0%	0.0%	-4.8%
PADD 05	436	435	450	472	433	398	434
Ch prev Yr	-3	-58	11	22	-11	-15	-1
% chg	-0.7%	-11.8%	2.5%	4.9%	-2.5%	-3.6%	-0.3%



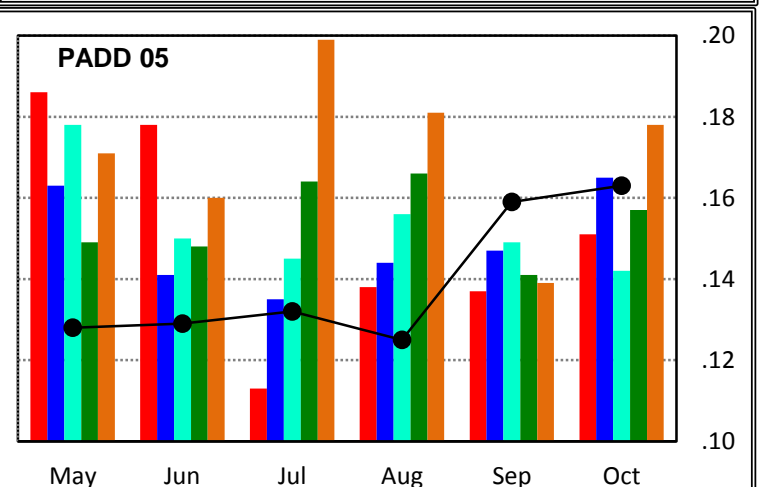
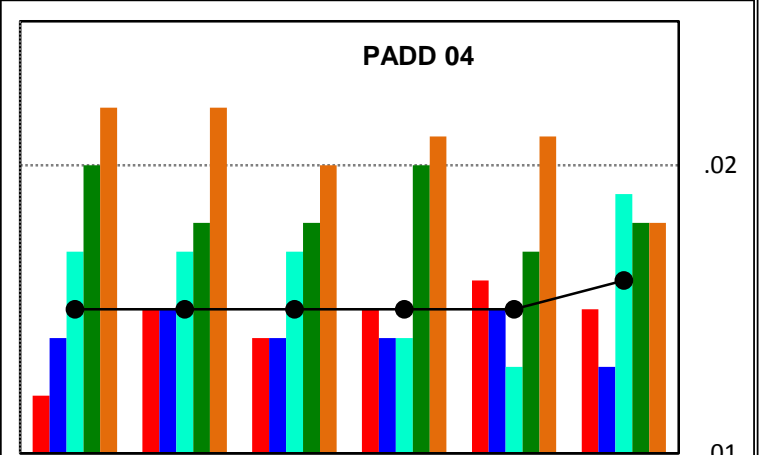
Residual Fuel Demand



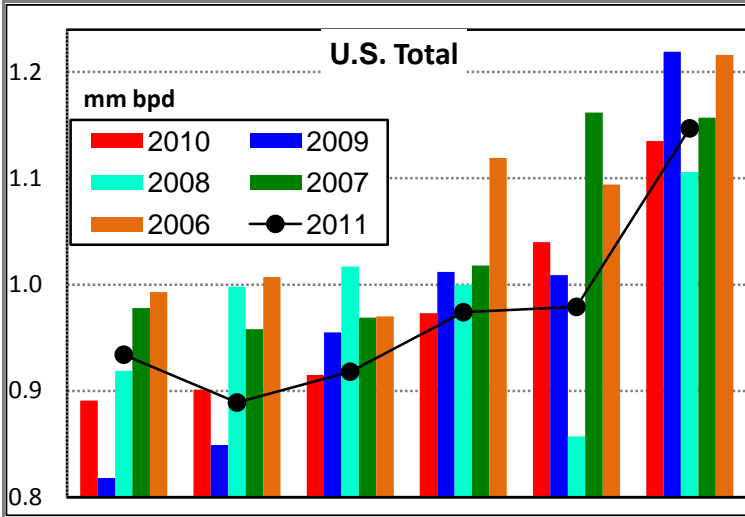
Demand for Residual Fuel Oil

Source: EIA Monthly Petroleum Supply

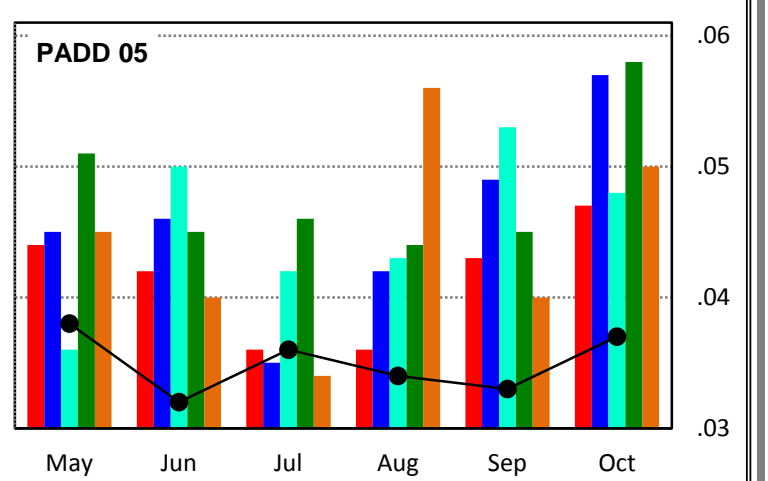
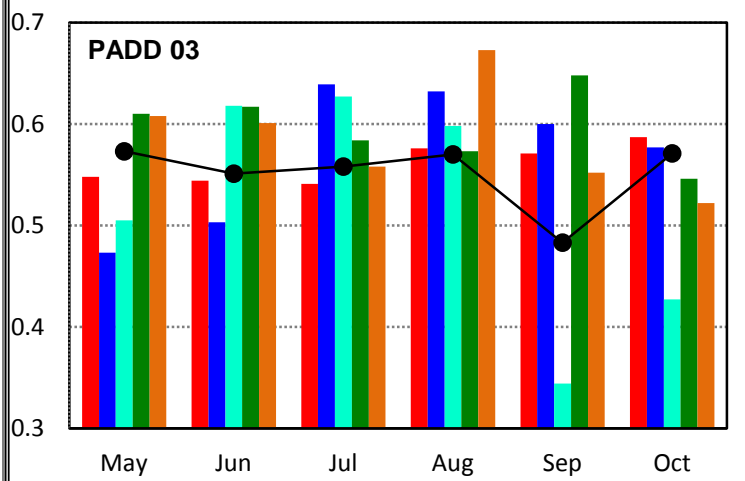
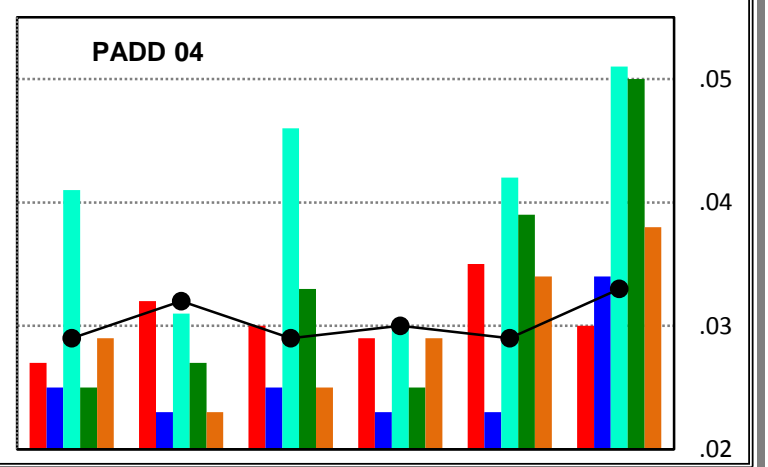
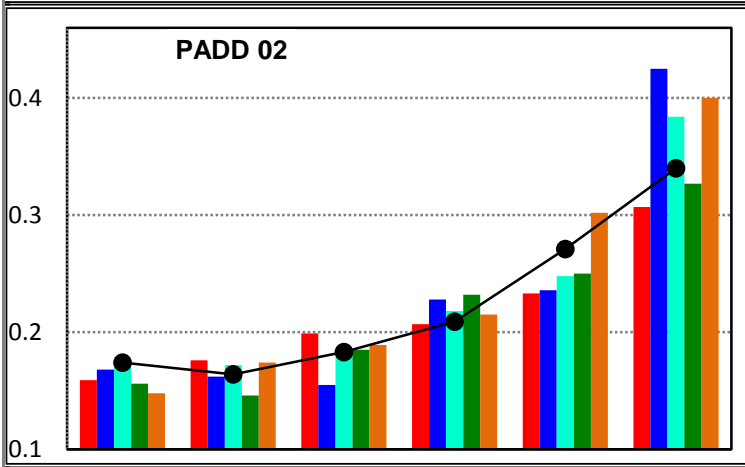
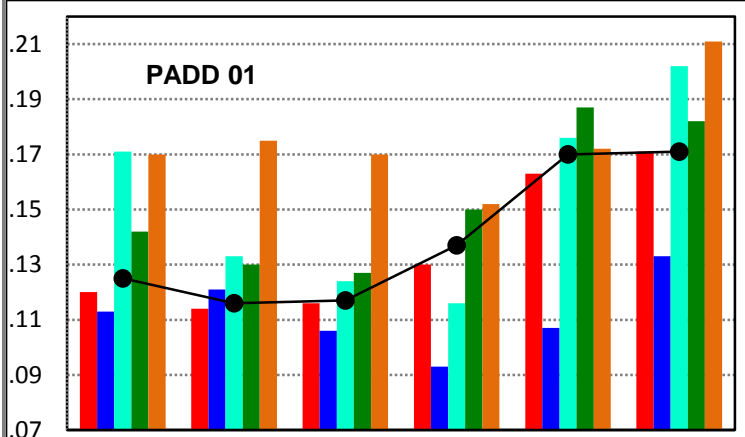
	000 bpd						Latest Qtr Avg
	May11	Jun11	Jul11	Aug11	Sep11	Oct11	
U. S.	478	471	316	319	482	402	401
Ch prev Yr	-41	-29	-279	-157	-31	-87	-92
% chg	-7.9%	-5.8%	-46.9%	-33.0%	-6.0%	-17.8%	-18.6%
PADD 01	211	166	166	144	222	161	176
Ch prev Yr	-3	-95	-109	-101	-42	-84	-76
% chg	-1.4%	-36.4%	-40%	-41%	-15.9%	-34.3%	-30.1%
PADD 02	27	41	40	15	26	29	23
Ch prev Yr	-13	10	13	-17	16	16	5
% chg	-32.5%	32.3%	48%	-53.1%	160.0%	123%	27.3%
PADD 03	103	125	-32	25	64	38	42
Ch prev Yr	32	106	-203	-26	-27	-32	-28
% chg	45%	558%	-119%	-51%	-30%	-46%	-40.1%
PADD 04	10	10	10	10	10	11	10
Ch prev Yr	3	0	1	0	-1	1	0
% chg	42.9%	0.0%	11.1%	0.0%	-9.1%	10.0%	0.0%
PADD 05	128	129	132	125	159	163	149
Ch prev Yr	-58	-49	19	-13	22	12	7
% chg	-31.2%	-27.5%	17%	-9.4%	16.1%	7.9%	4.9%



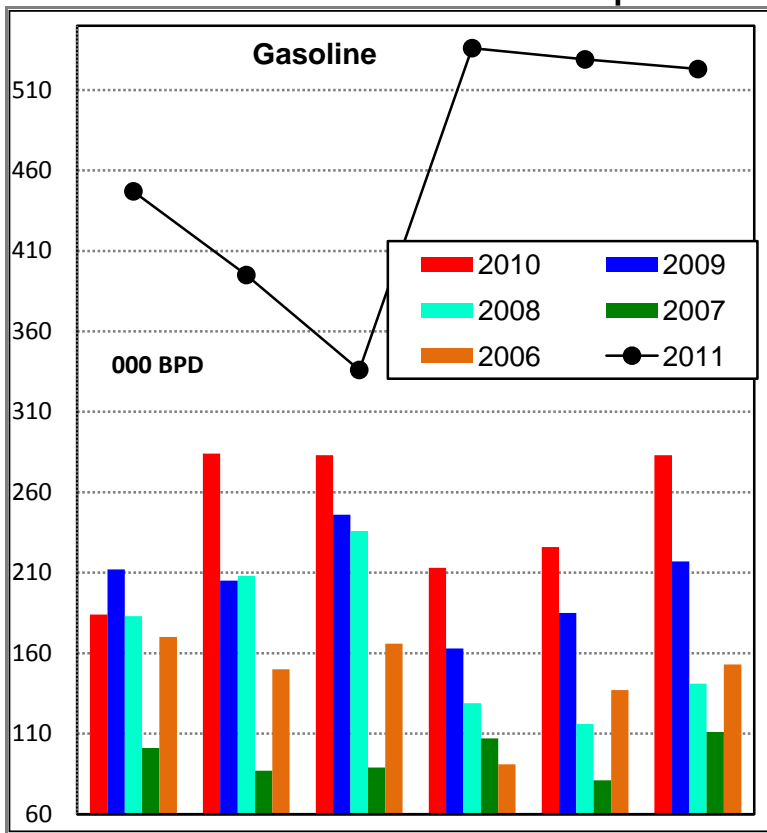
Propane Demand



Demand for Propane							
Source: EIA Monthly Petroleum Supply							
	000 bpd						Latest Qtr Avg
	May11	Jun11	Jul11	Aug11	Sep11	Oct11	
U. S.	934	889	918	974	979	1,147	1,033
Ch prev Yr	43	-12	3	1	-61	12	-16
% chg	4.8%	-1.3%	0%	0.1%	-5.9%	1.1%	-1.5%
PADD 01	125	116	117	137	170	171	159
Ch prev Yr	5	2	1	7	7	0	5
% chg	4.2%	1.8%	1%	5.4%	4.3%	0.0%	3.0%
PADD 02	164	154	173	199	261	330	263
Ch prev Yr	15	-12	-16	2	38	33	24
% chg	10.1%	-7.2%	-8%	1.0%	17.0%	11.1%	10.2%
PADD 03	573	551	558	570	483	571	541
Ch prev Yr	25	7	17	-6	-88	-16	-37
% chg	4.6%	1.3%	3%	-1.0%	-15.4%	-2.7%	-6.3%
PADD 04	29	32	29	30	29	33	31
Ch prev Yr	2	0	-1	1	-6	3	-1
% chg	7.4%	0.0%	-3.3%	3.4%	-17.1%	10.0%	-2.1%
PADD 05	42	36	40	38	37	41	39
Ch prev Yr	-6	-10	0	-2	-10	-10	-7
% chg	-12.5%	-21.7%	0%	-5.0%	-21.3%	-19.6%	-15.9%



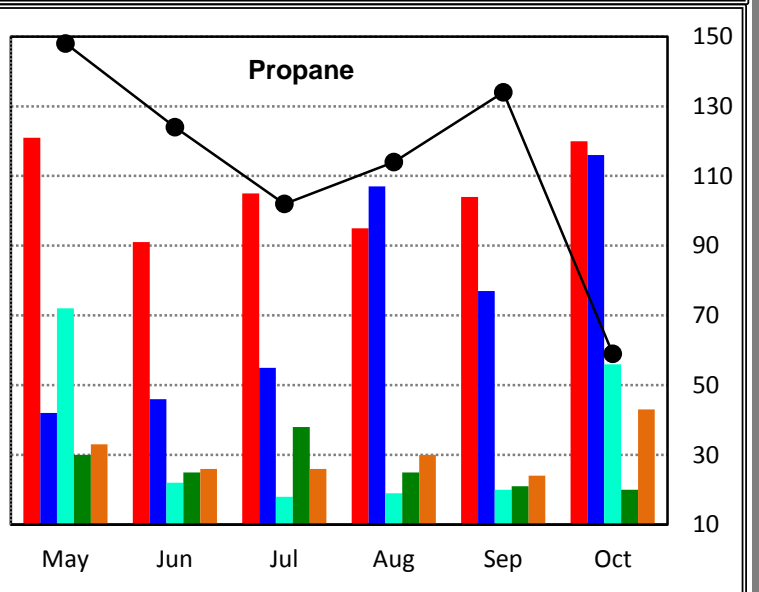
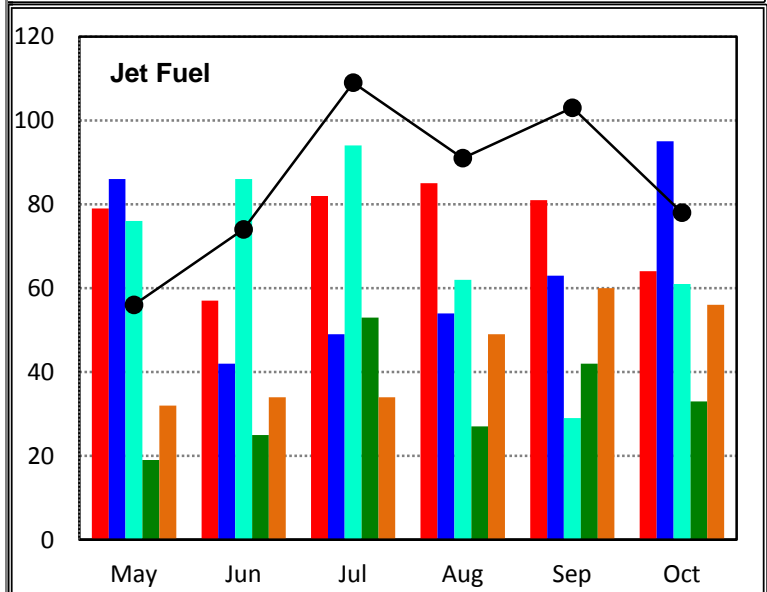
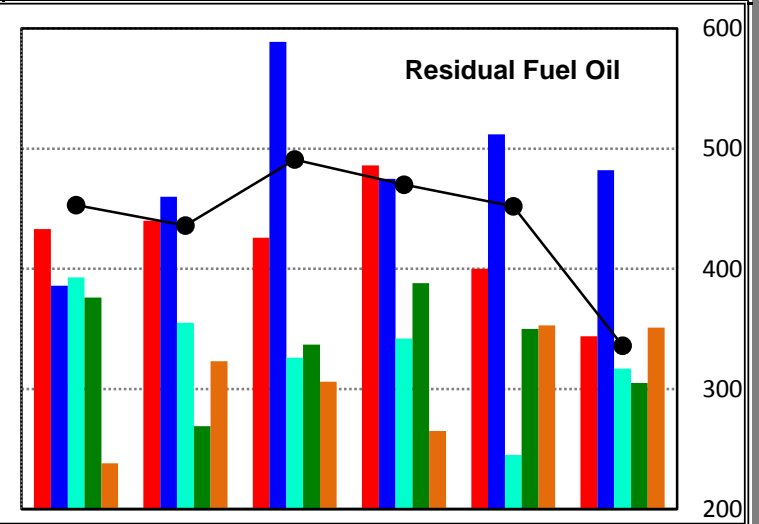
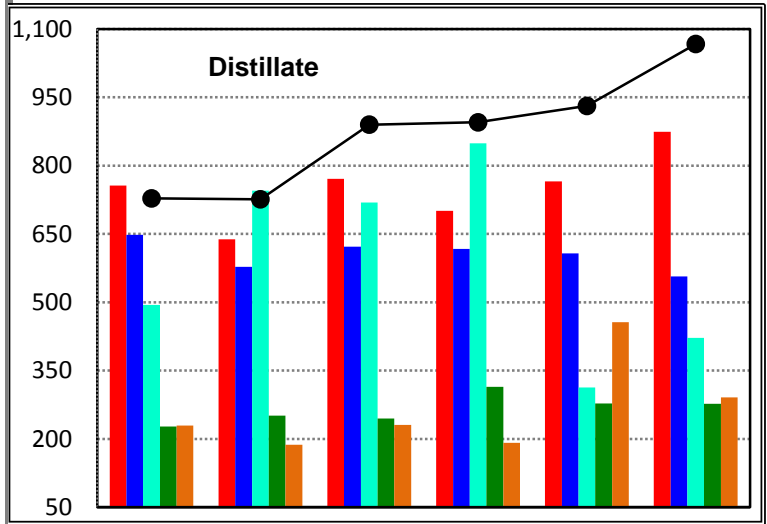
U.S. Exports of Petroleum Products



U. S. Exports of Petroleum Products

Source: EIA Monthly Petroleum Supply

	000 bpd						Latest Qtr Avg
	May11	Jun11	Jul11	Aug11	Sep11	Oct11	
Gasoline	447	395	336	536	529	523	529
Ch prev Yr	263	111	53	323	303	240	289
% chg	142.9%	39.1%	19%	152%	134.1%	85%	119.9%
Distillate	728	726	890	895	931	1,067	964
Ch prev Yr	-28	88	119	194	166	193	184
% chg	-3.7%	13.8%	15%	27.7%	21.7%	22.1%	23.6%
Jet	56	74	109	91	103	78	91
Ch prev Yr	-23	17	27	6	22	14	14
% chg	-29.1%	29.8%	33%	7.1%	27.2%	21.9%	18.3%
Residual	453	436	491	470	452	336	419
Ch prev Yr	20	-4	65	-16	52	-8	9
% chg	4.6%	-0.9%	15%	-3.3%	13.0%	-2.3%	2.3%
Propane	148	124	102	114	134	59	102
Ch prev Yr	27	33	-3	19	30	-61	-4
% chg	22.3%	36.3%	-3%	20.0%	28.8%	-50.8%	-3.8%



U. S. Petroleum Administrative for Defense Districts (PADDs)

