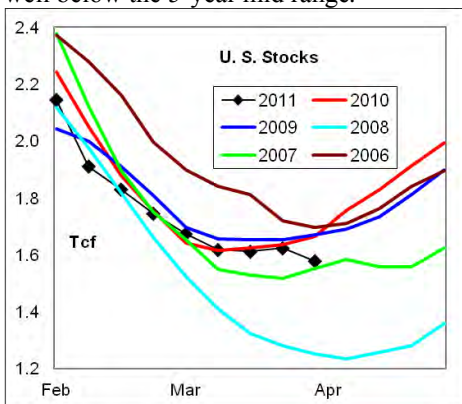
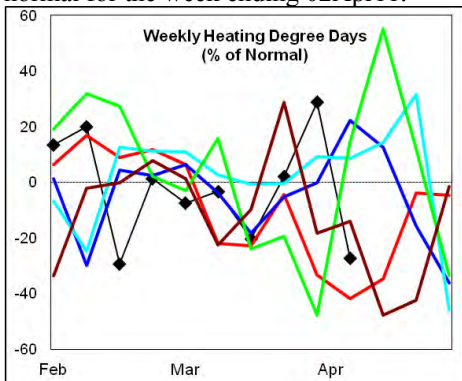




**Summary**<sup>1</sup> The stock draw of -45 Bcf was a record draw for the week, driven by exceptionally high heating degrees in the East Region. Stock levels ended the week well below the 5-year mid range.



Heating degree days were +36% above normal for the week ending 02Apr11.



In the East Region stocks decreased -52 Bcf for the period, a record large draw for the period. Stocks increased +5 Bcf in the West Region, a build above the 5-year range for the week. The stock build of +2 Bcf in the Producing Region was at the low end of the historic range.

Heating degree days were +36% above normal in the East Region, -9% below normal in the West Region and +19% above normal in the Producing Region for the week ending 02Apr11.

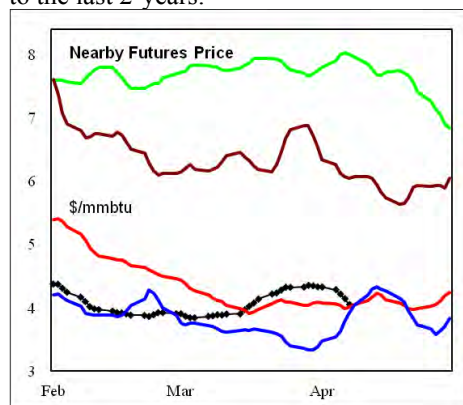
**Heating degree days** were +29% above normal for the week ended 02Apr11, and forecast to be -27% below normal for the

week ending 09Apr11.

The 6-10 day NWS forecast for the week ending 16Apr11 is for colder than normal temperatures in the Northeast and West Coast, while above normal in the southwest and near normal elsewhere.

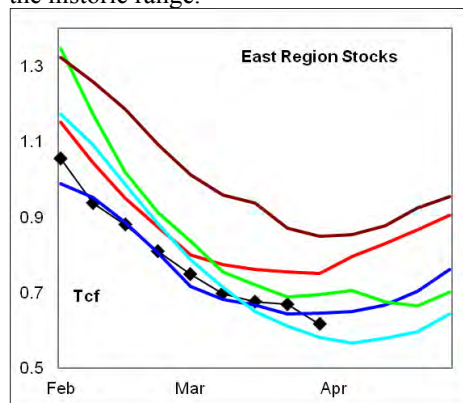
The 8-14 day NWS forecast for the week ending 20Apr11 is for warmer than normal temperatures in the southwest, colder than normal across the northern tier states and near normal elsewhere.

**Prices:** Nearby gas futures prices decreased -34 cpg for the week ending 07Apr11. Prices levels ended the week comparable to the last 2-years.



The 1<sup>st</sup> - 4<sup>th</sup> month forward price curve traded flat last week ending 07Apr11. The spread ended the week at a record low carry.

**East Region** stocks decreased -52 Bcf last week, a record draw for the week. The latest 4-wk draw was at the 5-year mid range. Stock levels were at the low end of the historic range.

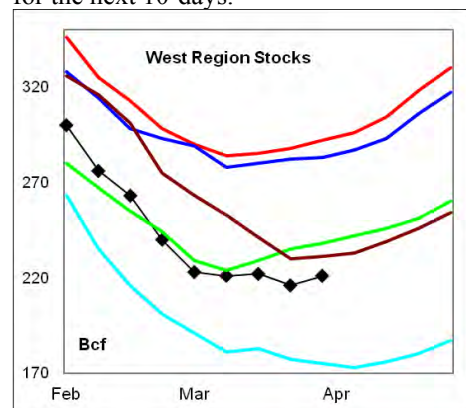


Heating degree days in the region were +36% above normal last week and are forecast to be -27% below normal for the week ending 09Apr11. Slightly below normal heating degree days are forecast for the next 10-days, concentrated in the northeast.

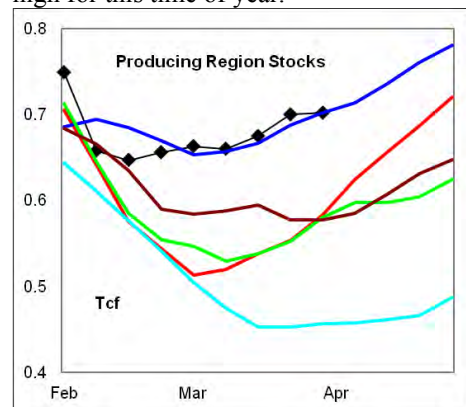
**West Region** stocks increased +5 Bcf on

the week, a build above the 5-year range. Stock levels ended the week at the low end of the historic range. The latest 4-wk stock draw was a lower draw than the mid range.

Heating degree days were -9% below normal last week, and forecast to be -11% below normal for the current week. Above normal heating degree days are forecast for the next 10-days.



**Producing Region** stocks saw a build of +2 Bcf on the week, which was at the low end of the historic range. The monthly stock build matched the historic mid range last week. Stock levels matched the 5-year high for this time of year.



Heating degree days were +19% above normal last week, and forecast to be -54% below normal for the week ending 09Apr11. Warmer than normal temperatures are forecast next week.

**Residual Fuel Oil Switching:** The price spread between fuel oil and natural gas remains highly favorable for gas.

**Outlook:** A return to below normal heating degree days this week has pressured prices lower, to a level comparable to the last 2-years for the period. Expect prices to remain weak during the spring low demand period.

<sup>1</sup> **Related Web Sites:**

[Data Source is EIA Weekly Statistics](http://Data Source is EIA Weekly Statistics)

[National Weather Service 6-10 Day](http://National Weather Service 6-10 Day)

[National Weather Service 10-14 Day](http://National Weather Service 10-14 Day)



## NATURAL GAS: Graph Link and Weekly Summary

Report prepared as of: April 7, 2011

For the week ending: 1-Apr-11

### Weekly Trends in Stocks and Heating Degree Days for the week ending:

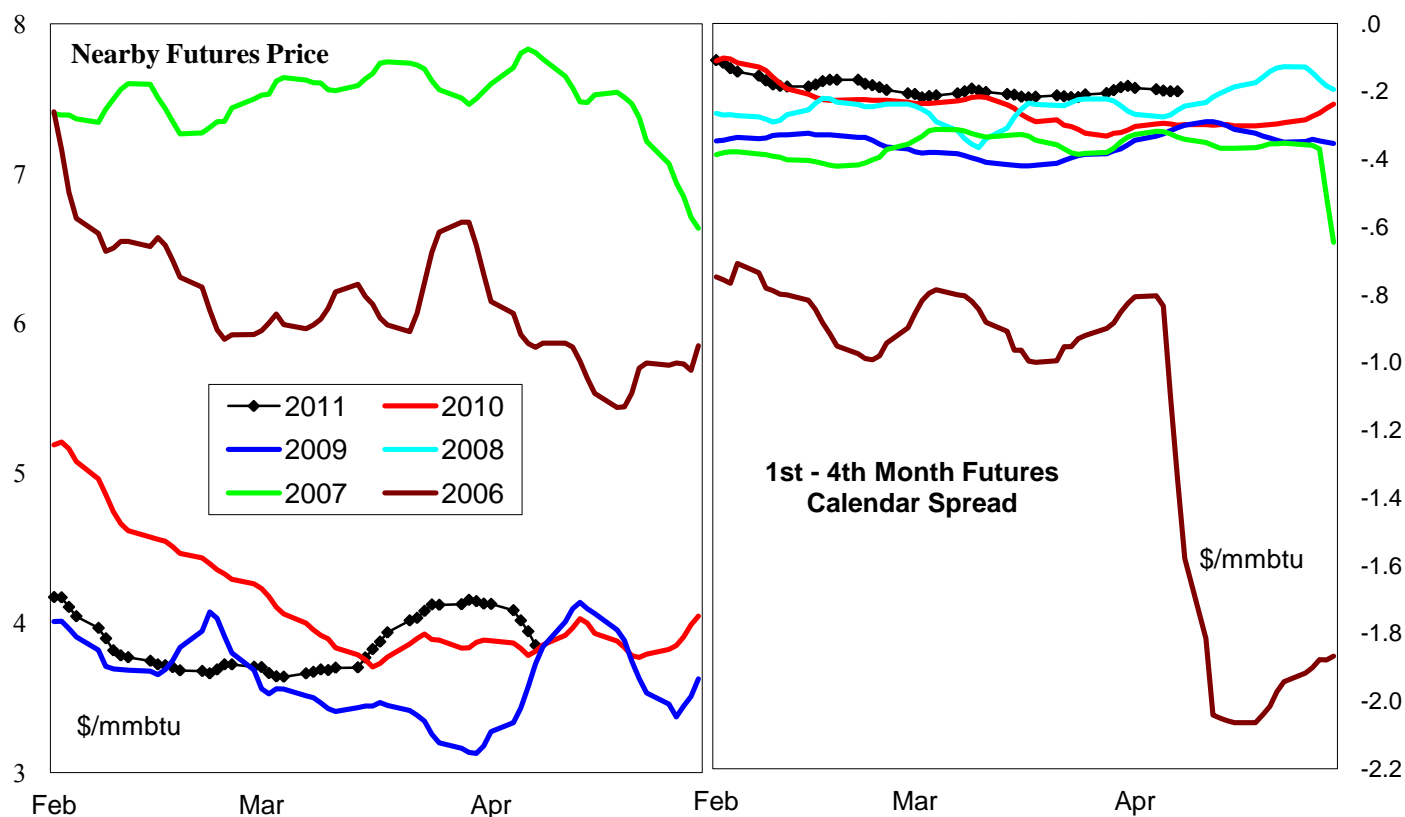
Week ending:	1-Apr-11			26-Mar-11		2-Apr-11		9-Apr-11	
Region	Weekly Stocks			Weekly Heating Degree Days					
	Bcf	Change vs prior:		Change vs prior week	% of normal	Change vs prior week	% of normal	Change vs prior week	% of normal
		Week Bcf	Year (%)						
U.S. Total	1,579	-45	-5.2	19	2%	19	29%	-80	-27%
East	616	-52	-17.9	27	6%	25	36%	-101	-27%
West	221	5	-24.3	33	20%	-48	-9%	-12	-11%
Producing	742	2	19.1	-16	-51%	36	19%	-48	-54%

### Seasonal Trends in Stocks and Heating Degree Days

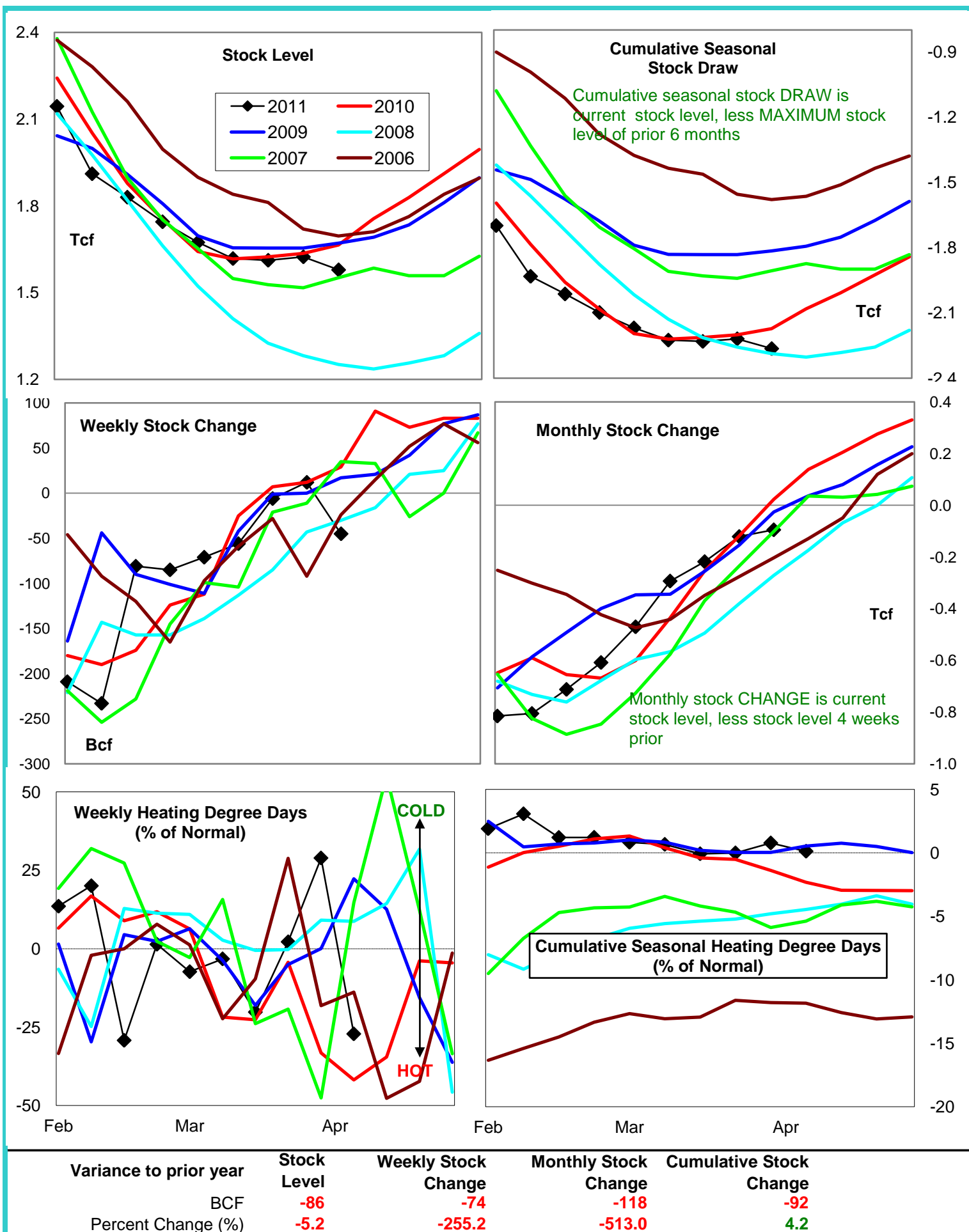
	Cumulative Stock Draw			Cumulative Heating Degree Days					
	Bcf	Change vs prior year Bcf	%	CHDD's vs normal	% of normal	CHDD's vs normal	% of normal	CHDD's vs normal	% of normal
<b>U.S. Total</b>	<b>-2,264</b>	<b>-92</b>	<b>4.1</b>	<b>141</b>	<b>0.0</b>	<b>160</b>	<b>0.8</b>	<b>80</b>	<b>0.1</b>
<b>East</b>	<b>-1,471</b>	<b>-121</b>	<b>8.2</b>	<b>168</b>	<b>0.7</b>	<b>193</b>	<b>1.7</b>	<b>92</b>	<b>1.0</b>
<b>West</b>	<b>-299</b>	<b>-65</b>	<b>21.7</b>	<b>165</b>	<b>-2.1</b>	<b>117</b>	<b>-2.3</b>	<b>105</b>	<b>-2.5</b>
<b>Producing</b>	<b>-521</b>	<b>74</b>	<b>-14.2</b>	<b>34</b>	<b>-2.8</b>	<b>70</b>	<b>-2.3</b>	<b>22</b>	<b>-3.2</b>

### Futures Market Price Trends

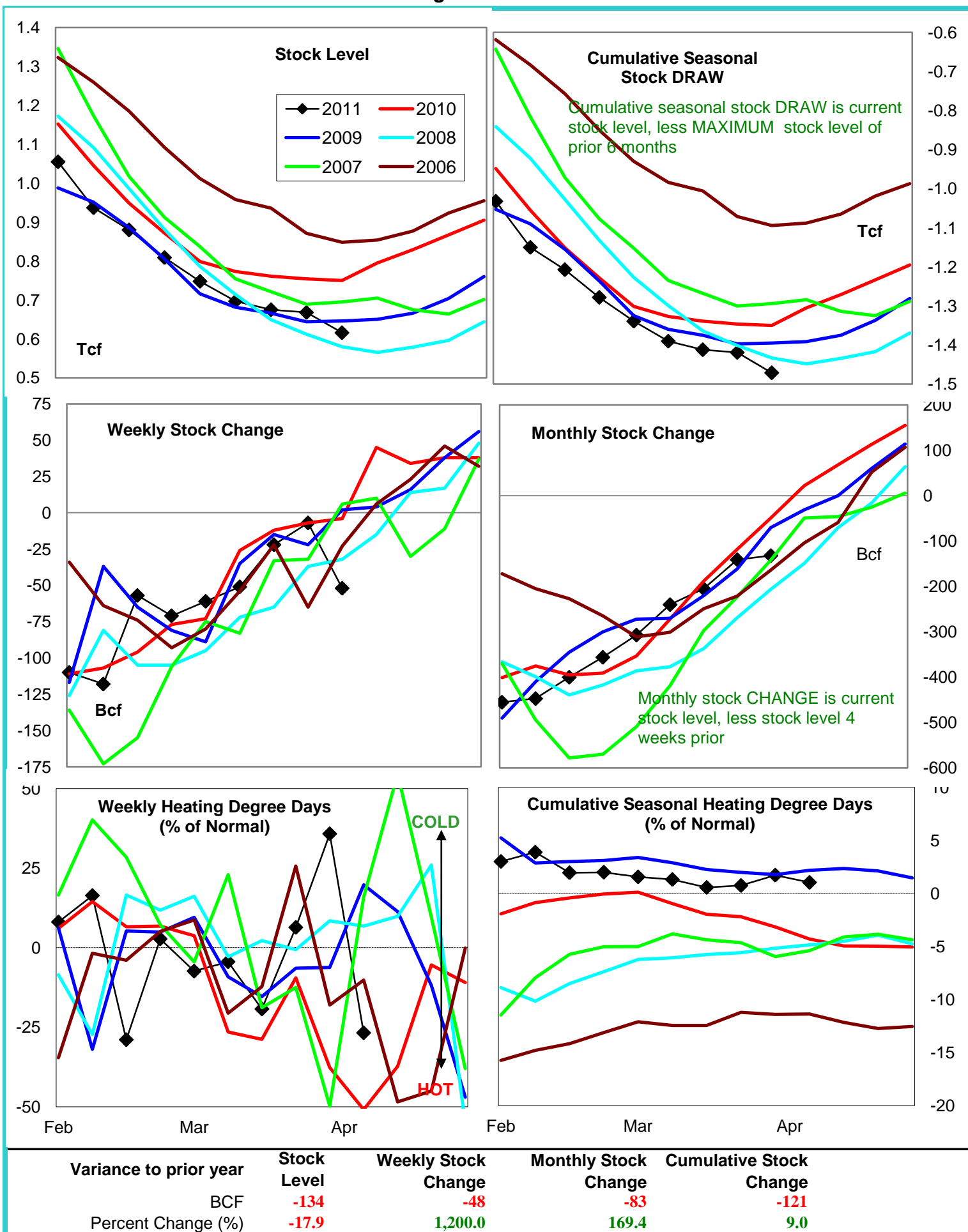
Date:	7-Apr-11	Change vs prior week, month, year		
		1-Apr-11	11-Mar-11	8-Apr-10
<b>1st month Futures</b>	<b>4.05</b>	<b>-0.31</b>	<b>0.16</b>	<b>0.09</b>
<b>% change</b>	xxxxx	<b>-7.1</b>	<b>4.1</b>	<b>2.3</b>



# United States Natural Gas Stock and Weather Trends

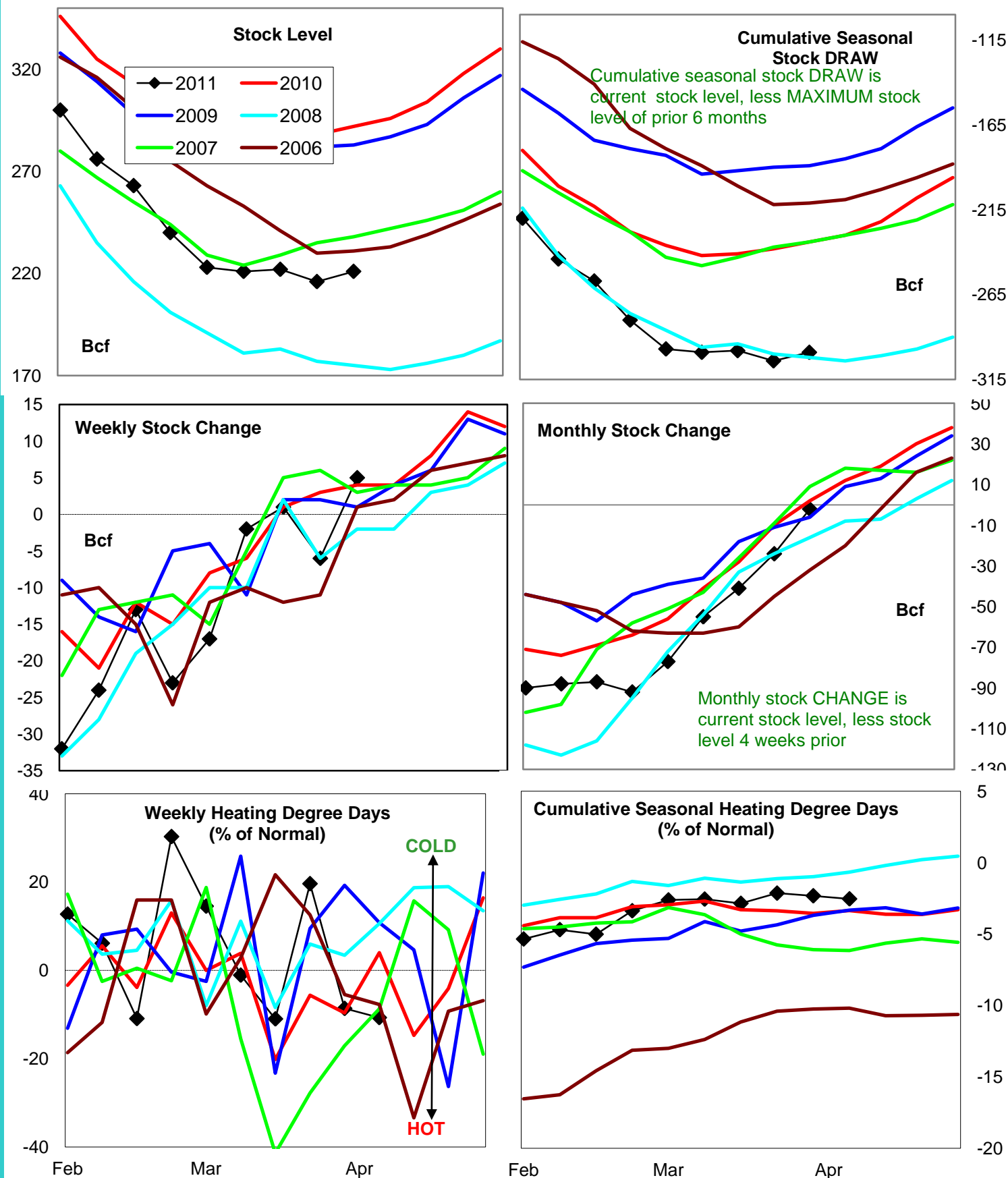


# Natural Gas East Region Stock and Weather Trends





# Natural Gas West Region Stock and Weather Trends



Variance to prior year

Stock  
LevelWeekly Stock  
ChangeMonthly Stock  
ChangeCumulative Stock  
ChangeBCF  
Percent Change (%)

-71

-24.3

1

25.0

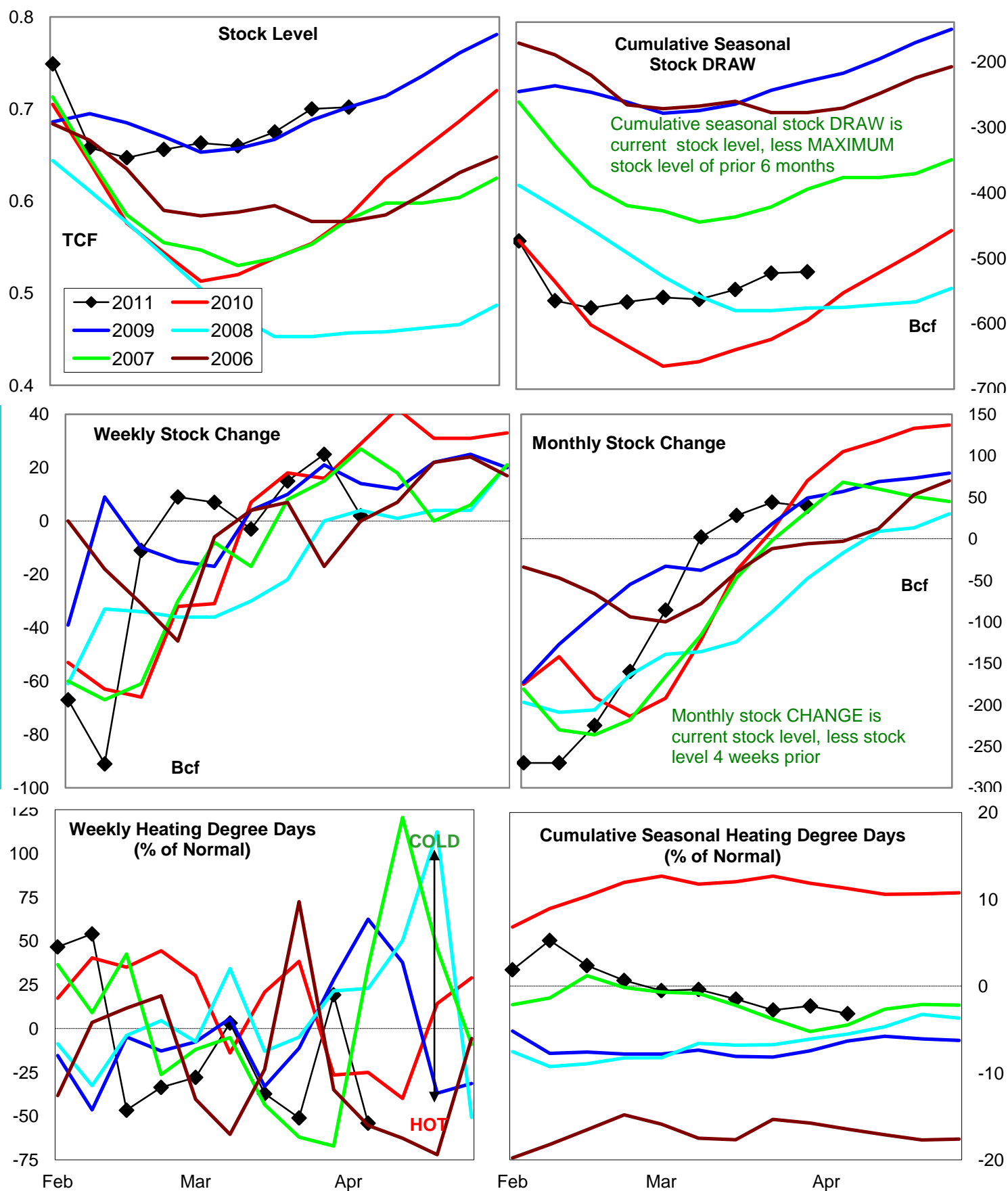
-4

-200.0

-65

27.8

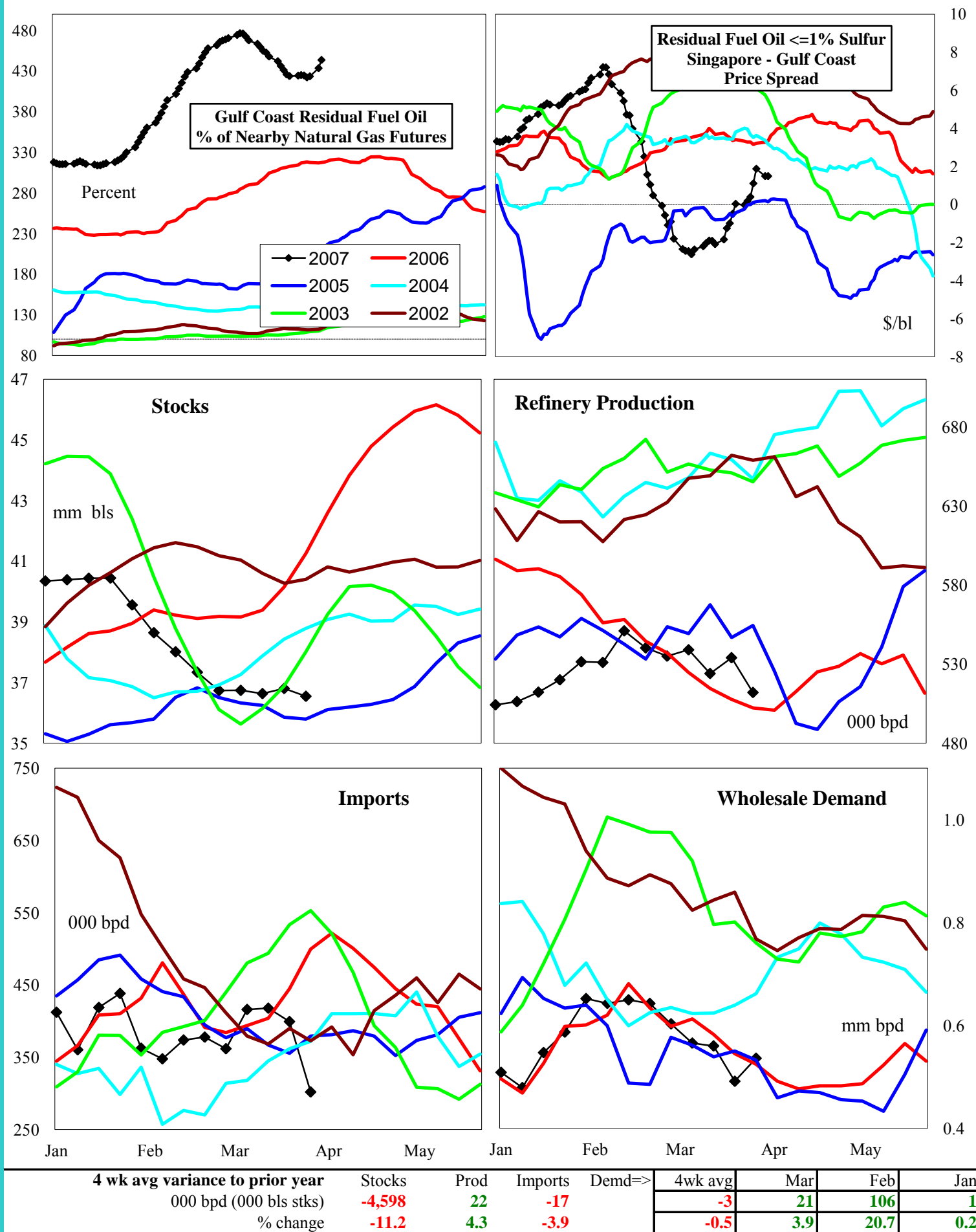
# Natural Gas Producing Region Stock and Weather Trends



Variance to prior year

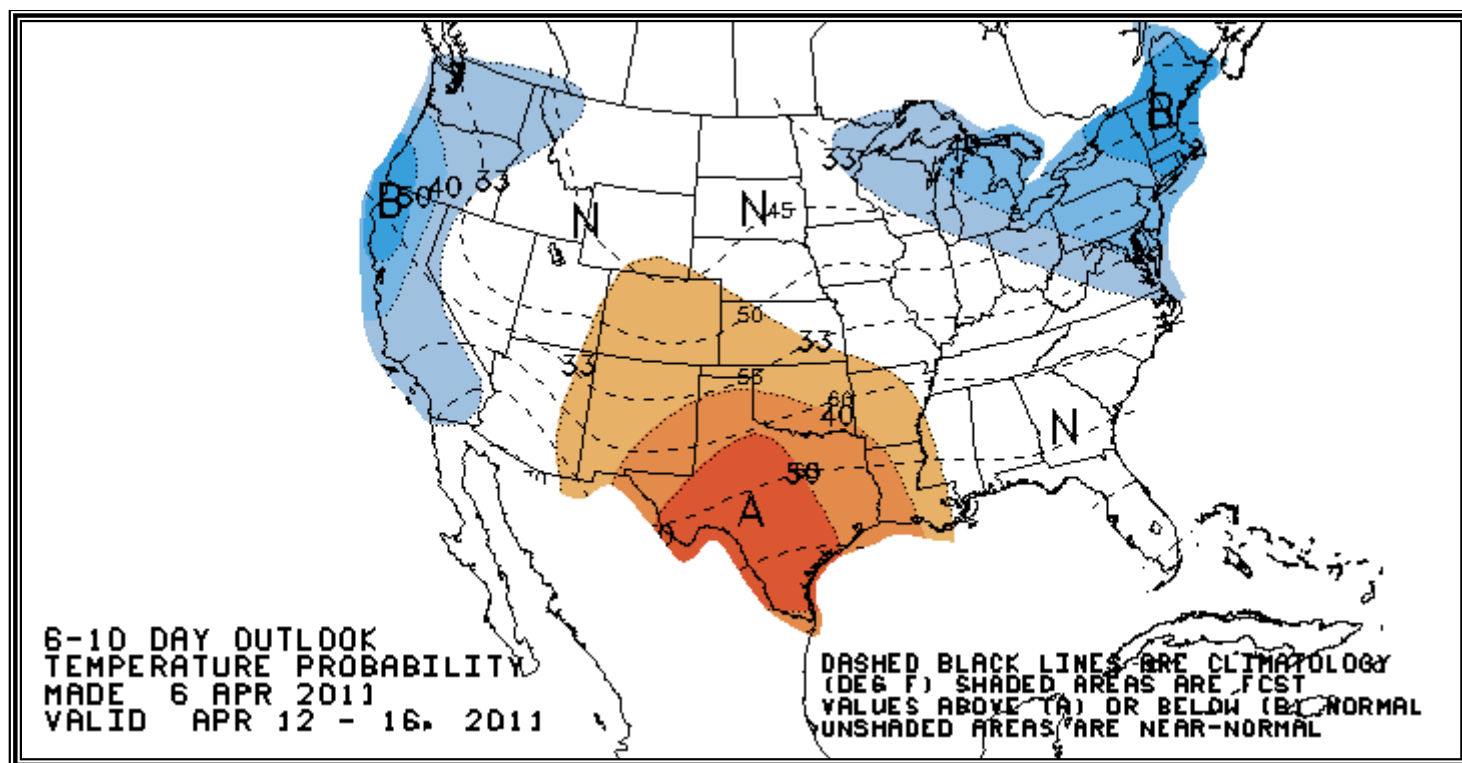
Stock  
LevelWeekly Stock  
ChangeMonthly Stock  
ChangeCumulative Stock  
ChangeBCF  
Percent Change (%)119  
19.1-27  
-93.1-31  
-44.374  
-12.4

# U.S. Residual Fuel Oil Price Spreads and Supply Balance



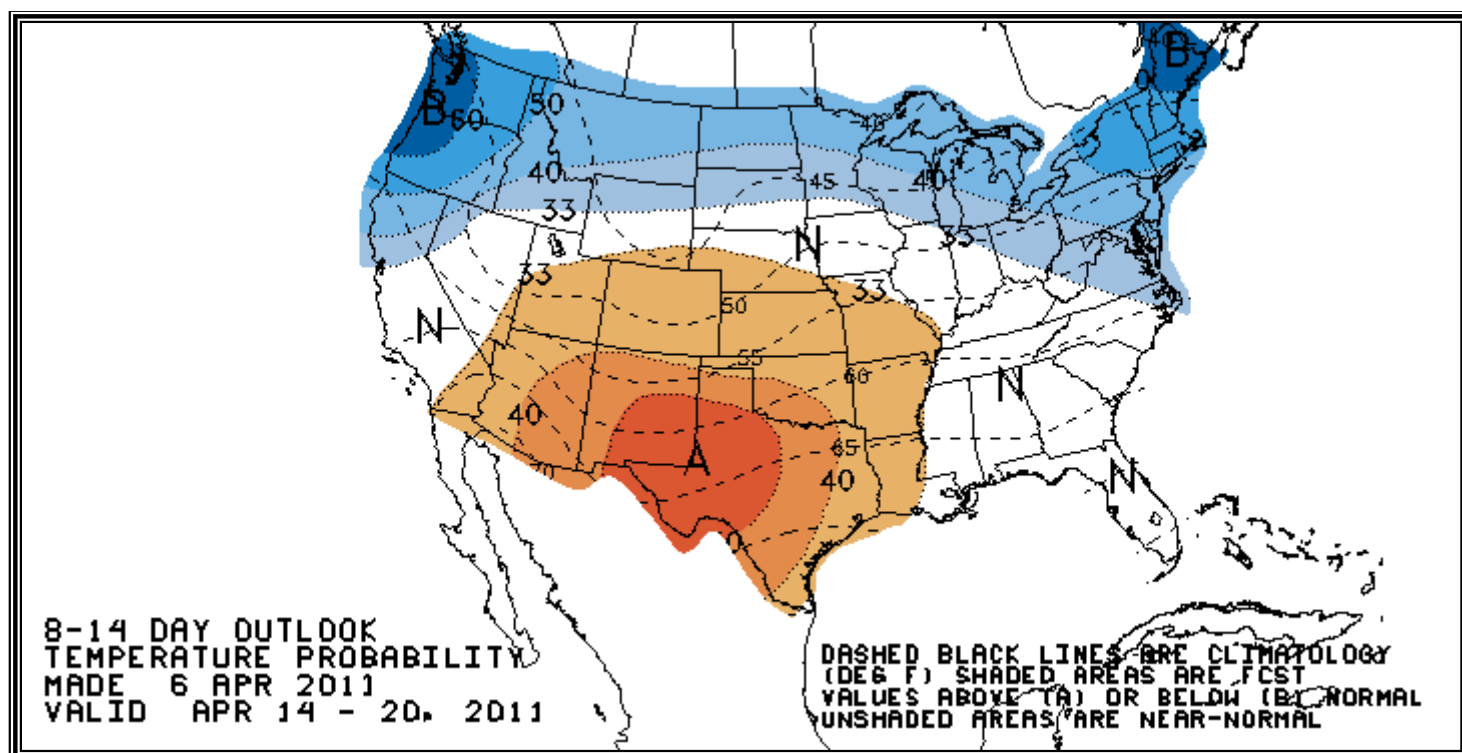
## National Weather Service Climate Prediction Center

## Degree Days 6 - 10 Day Temperature Forecast



## National Weather Service Climate Prediction Center

## Degree Days 8 - 14 Day Temperature Forecast





# American Gas Association Regions

