



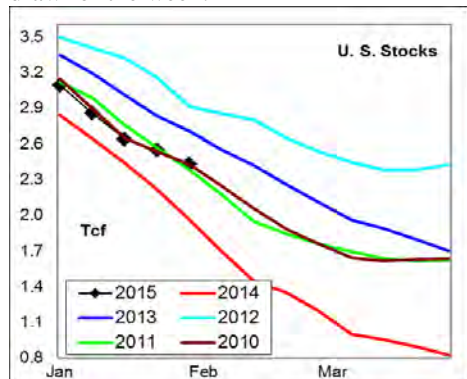
WEEKLY NATURAL GAS SUPPLY and PRICE TRENDS

A Fundamental Petroleum Trends Weekly Report

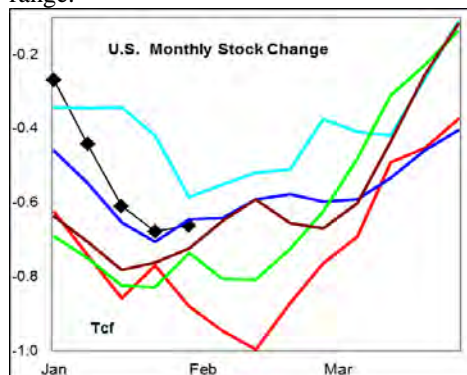
Lehi German Tel: 816.505.0980 www.fundamentalpetroleumtrends.com Thursday, February 05, 2015



Summary¹ The stock draw of -115 Bcf last week matched the prior record low draw for the week.



The latest 4-wk stock change was a draw of -644 Bcf, equal to the 3-yr mid range. The cumulative stock draw for the winter season was -37% less than last year, resulting in a stock level that is now +24% above last year and equal to the 5-yr mid range.



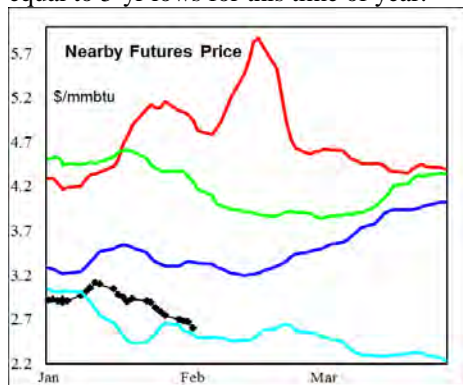
In the East Region stocks decreased -87 Bcf for the week, a draw less than each of the last 3-yr. Stocks declined -4 Bcf for the week in the West Region, a record low draw for the period. Stocks saw an -24 Bcf draw in the Producing region last week, a draw equal to the lowest draw of the last 3-yr for the period.

Temperatures were below across the eastern 1/2 of the country for the week ending 23Jan15, and below normal for the week ending 30Jan15.

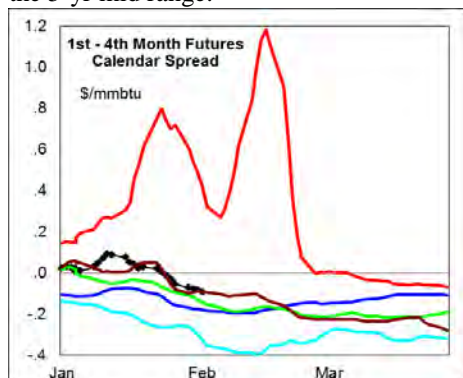
The 6-10 day NWS forecast for the week ending 14Feb15 is for below normal

temperatures in the eastern 1/3rd of the country, and much above normal in the west. The 8-14 day NWS forecast for the week ending 18Feb15 is for below normal temperatures eastern 1/3rd of the country and above normal temperatures in the west.

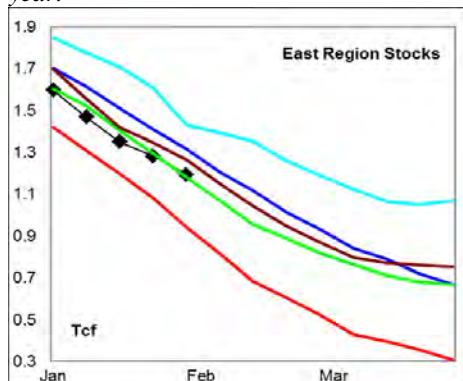
Prices: Nearby gas futures prices fell -\$.012/mmbtu for the week ending 05Feb15. Prices ended the week at a level equal to 5-yr lows for this time of year.



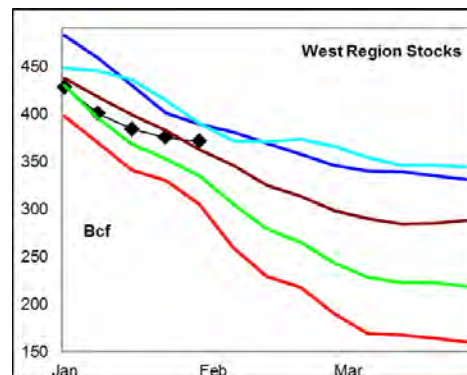
The 1st - 4th month forward price curve trended lower last week at a level above the 5-yr mid range.



East Region stocks declined -87 Bcf for the week, a less than each of the last 3-yr. The current stock level is +27% above last year.

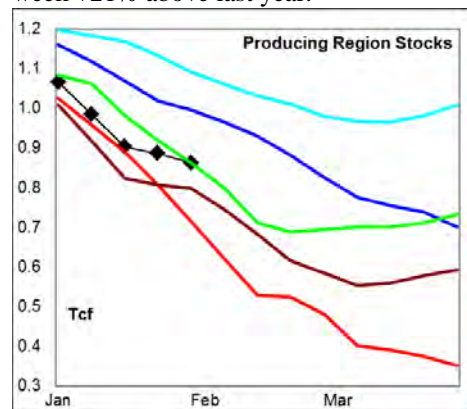


Temperatures were below normal for the week just ended, and are forecast to be well below normal for the next 10-days.



West Region stocks decreased -4 Bcf for the week, a record low draw for the period. Stock levels ended the week +22% above last year. Temperatures are forecast to be well above normal for the next 2-wks.

Producing Region stocks decreased -24 Bcf for the week, equal to the lowest draw of the last 3-yr. Stock levels ended the week +21% above last year.



Temperatures are forecast to be slightly below normal during the next 2-wks.

Residual Fuel Oil Switching: The price spread between fuel oil and natural gas end the week below the last 3-yr in favor of gas.

Outlook: Temperatures are forecast to be below normal over the next 10-days across the eastern 1/3rd of the country and much above normal in the West.

Gulf spot prices have declined to match 5-yr lows this week on record production and very ample stock levels. Look for price weakness for the balance of the winter heating season.

¹ Related Web Sites:

Data Source is EIA Weekly Statistics

National Weather Service 6-10 Day

National Weather Service 10-14 Day

NATURAL GAS: Graph Link and Weekly Summary



Report prepared as of: February 5, 2015

For the week ending: 30-Jan-15

Weekly Trends in Stocks

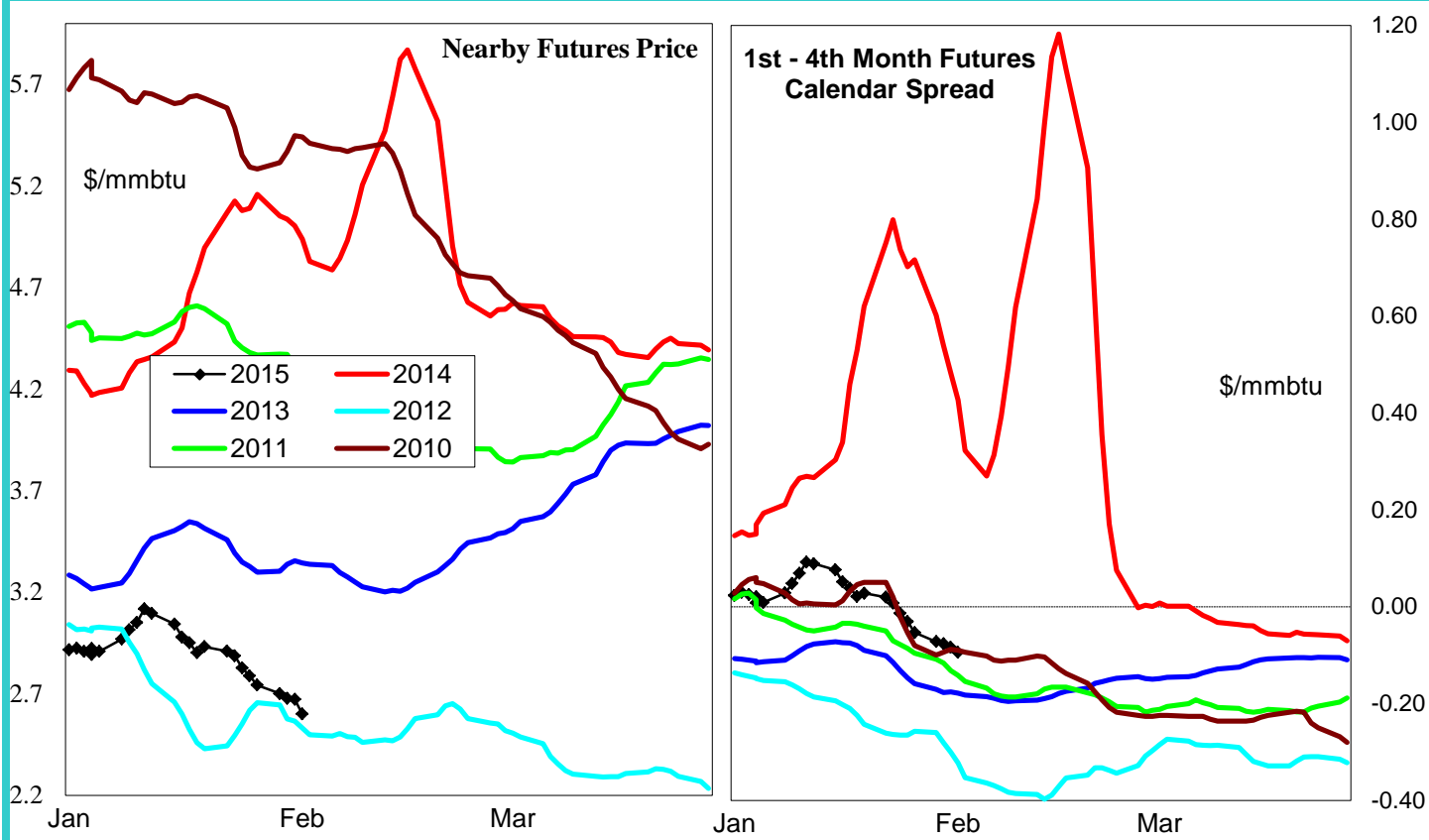
Week ending:	30-Jan-15							
Region	Weekly Stocks							
	Change vs prior:							
	Bcf	Week Bcf	Year (%)					
U.S. Total	2,428	-115	23.9					
East	1,194	-87	27.0					
West	371	-4	21.6					
Producing	863	-24	20.7					

Seasonal Trends in Stocks

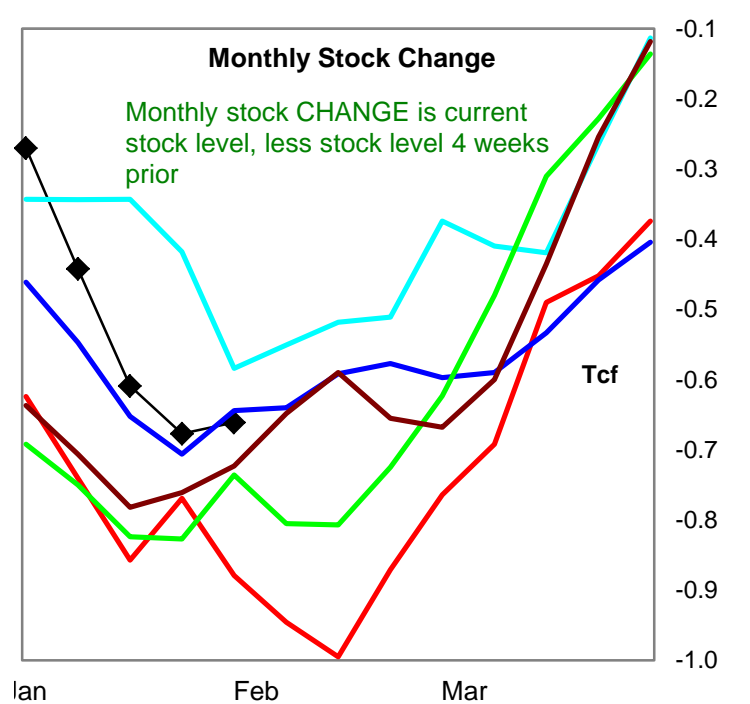
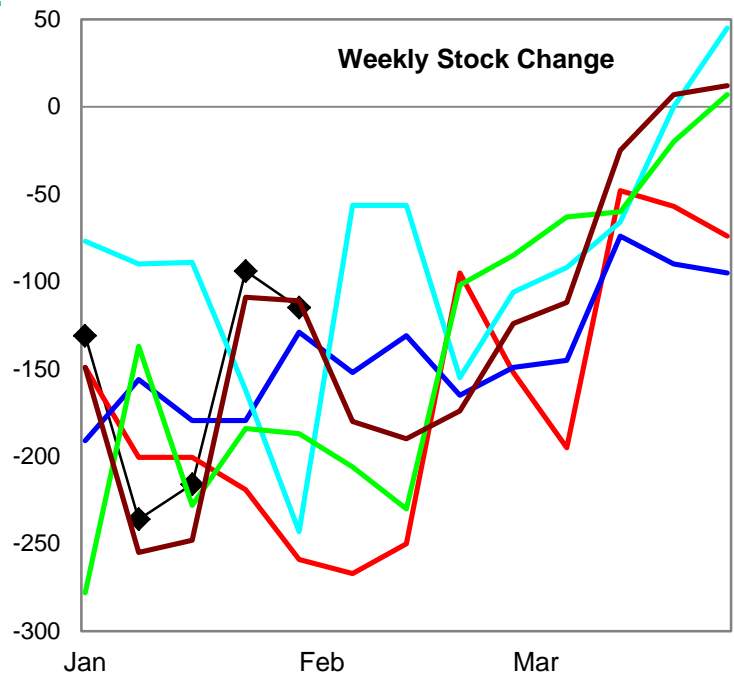
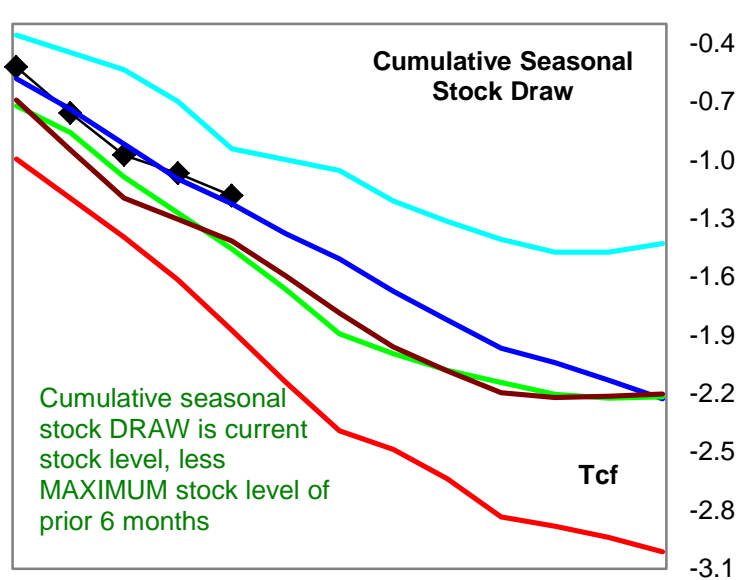
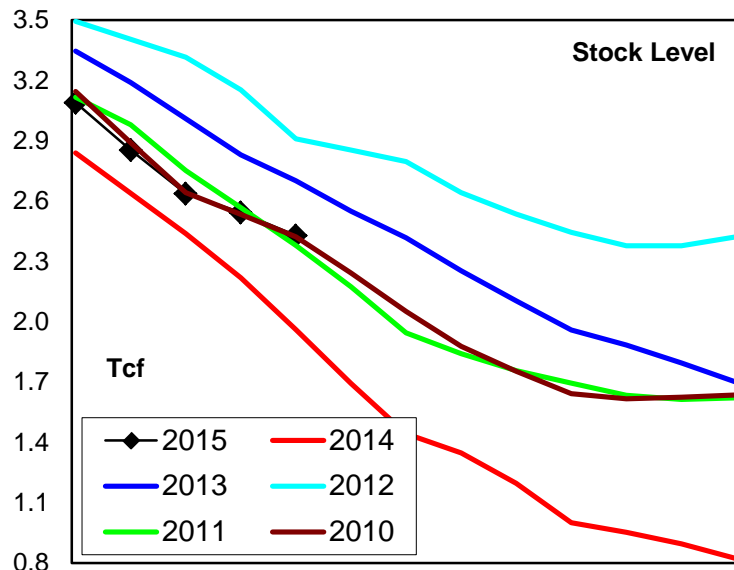
	Cumulative Stock Change							
	Change vs prior year							
	Bcf	Bcf	%					
U.S. Total	-1,183	691	-58.4					
East	-770	274	-35.6					
West	-131	119	-90.8					
Producing	-283	299	-105.7					

Futures Market Price Trends

Date:	5-Feb-15	Change vs prior week, month, year		
		30-Jan-15	9-Jan-15	17-Feb-14
1st month Futures	2.60	-0.09	-0.35	-3.46
% change	xxxxx	-3.4	-11.7	-57.1



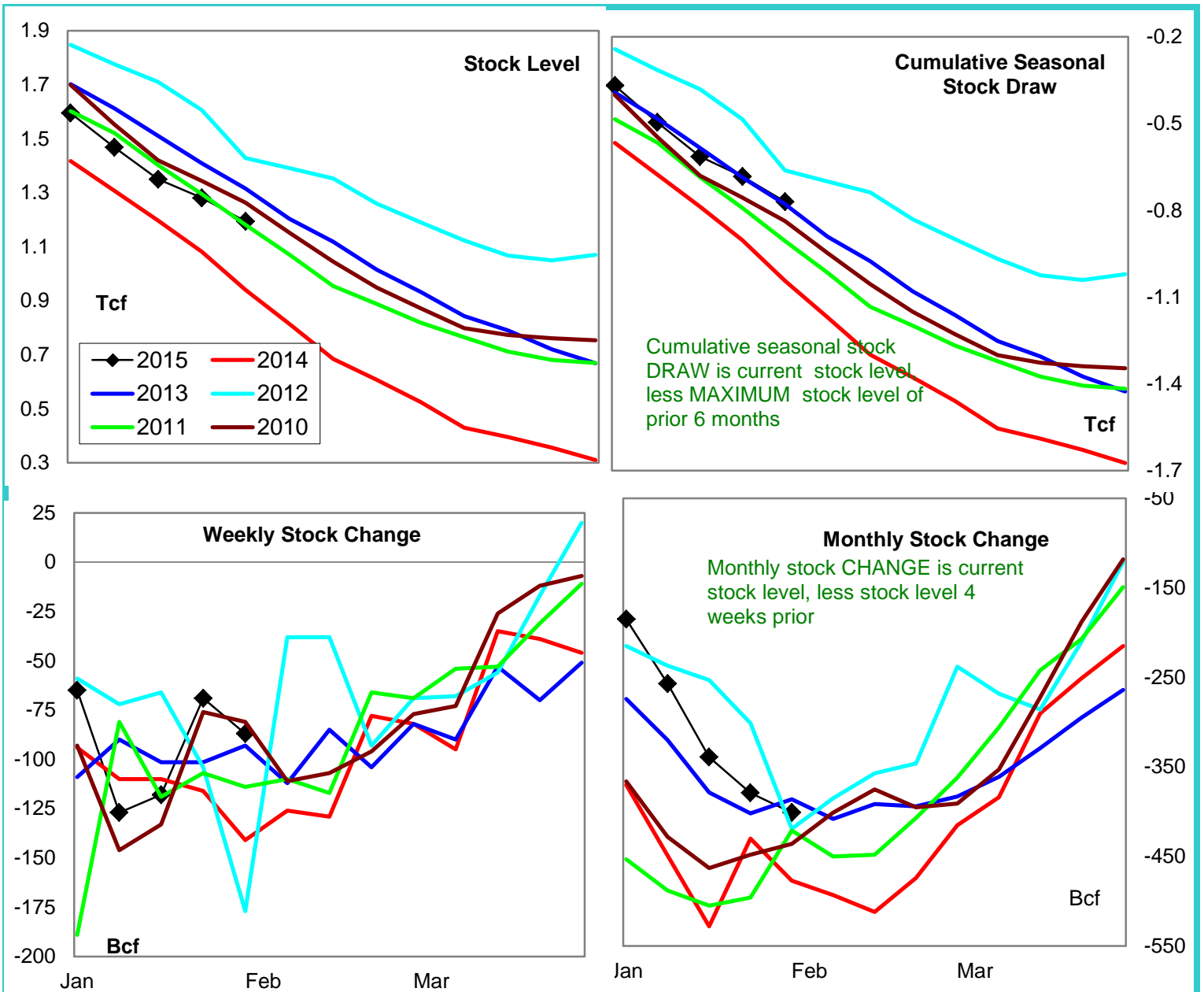
United States Natural Gas Stock and Weather Trends



Variance to prior year

Stock
LevelWeekly Stock
ChangeMonthly Stock
ChangeCumulative Stock
ChangeBCF
Percent Change (%)468
23.9144
-55.6218
-24.8691
-36.9

Natural Gas East Region Stock and Weather Trends



Variance to prior year

Stock
LevelWeekly Stock
ChangeMonthly Stock
ChangeCumulative Stock
Change

BCF

254

54

76

274

Percent Change (%)

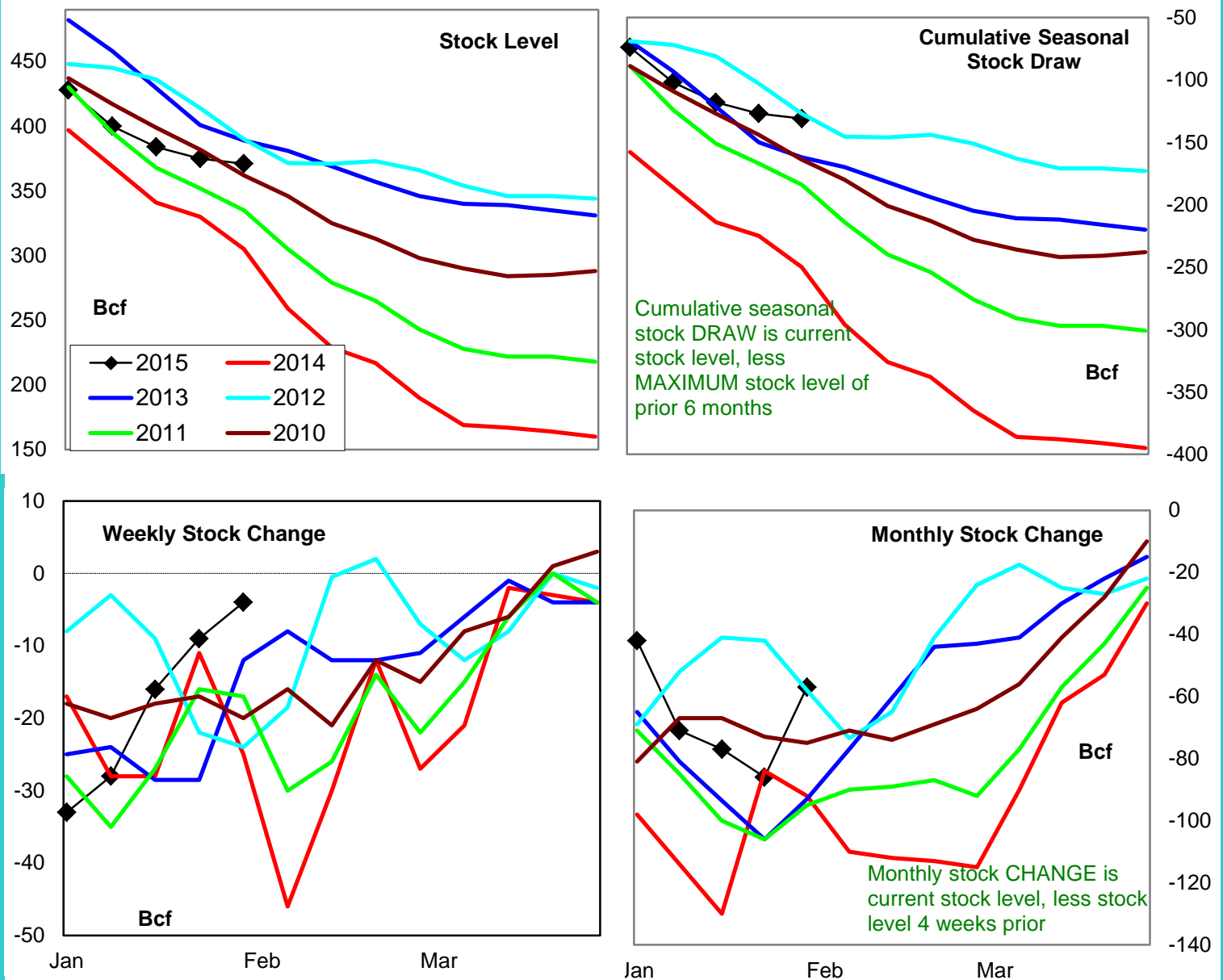
27.0

-38.3

-15.9

-26.2

Natural Gas West Region Stock and Weather Trends



Variance to prior year

Stock
LevelWeekly Stock
ChangeMonthly Stock
ChangeCumulative Stock
Change

BCF

66

21

35

119

Percent Change (%)

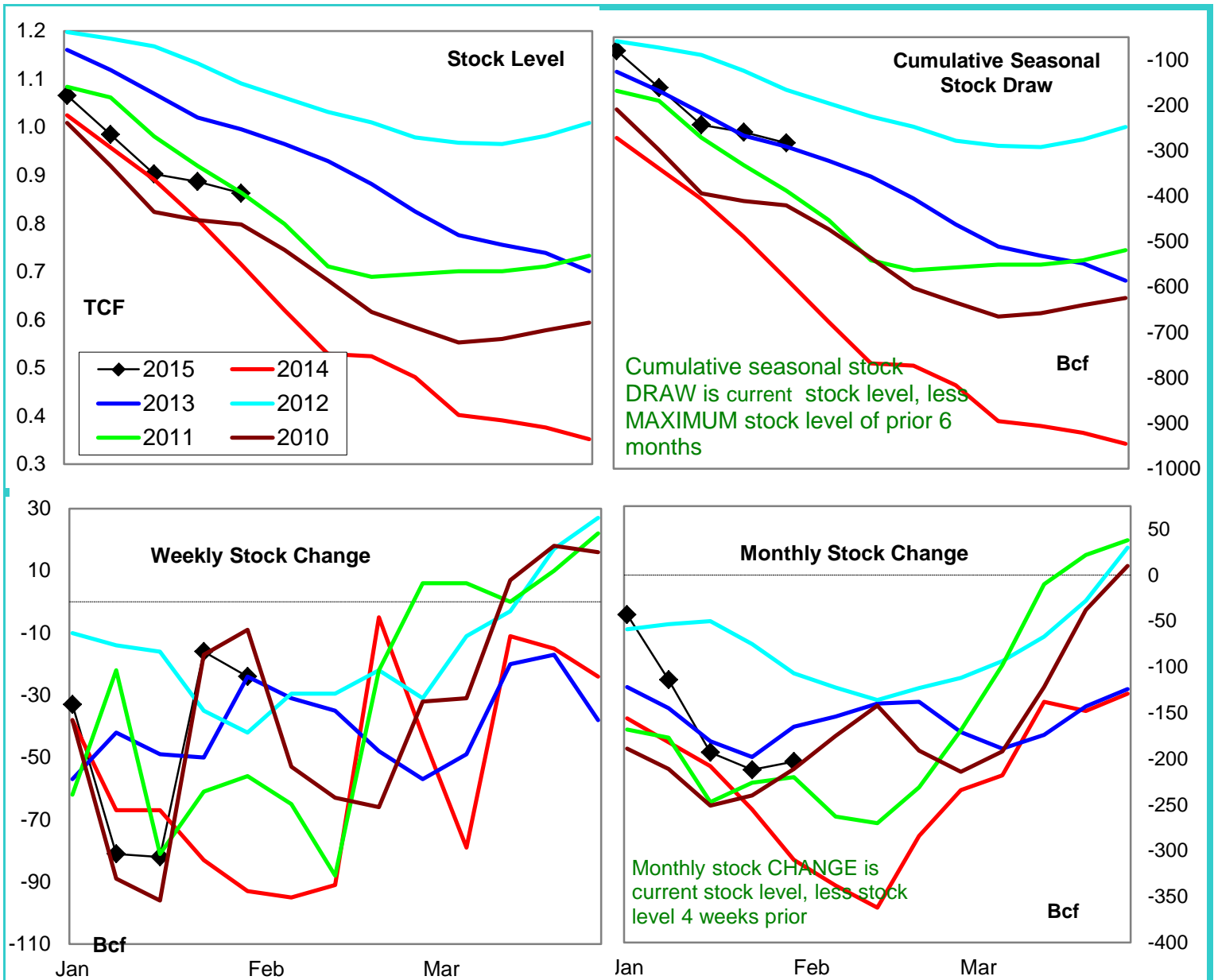
21.6

-84.0

-38.0

-47.6

Natural Gas Producing Region Stock and Weather Trends



Variance to prior year

Stock
LevelWeekly Stock
ChangeMonthly Stock
ChangeCumulative Stock
Change

BCF

148

69

107

299

Percent Change (%)

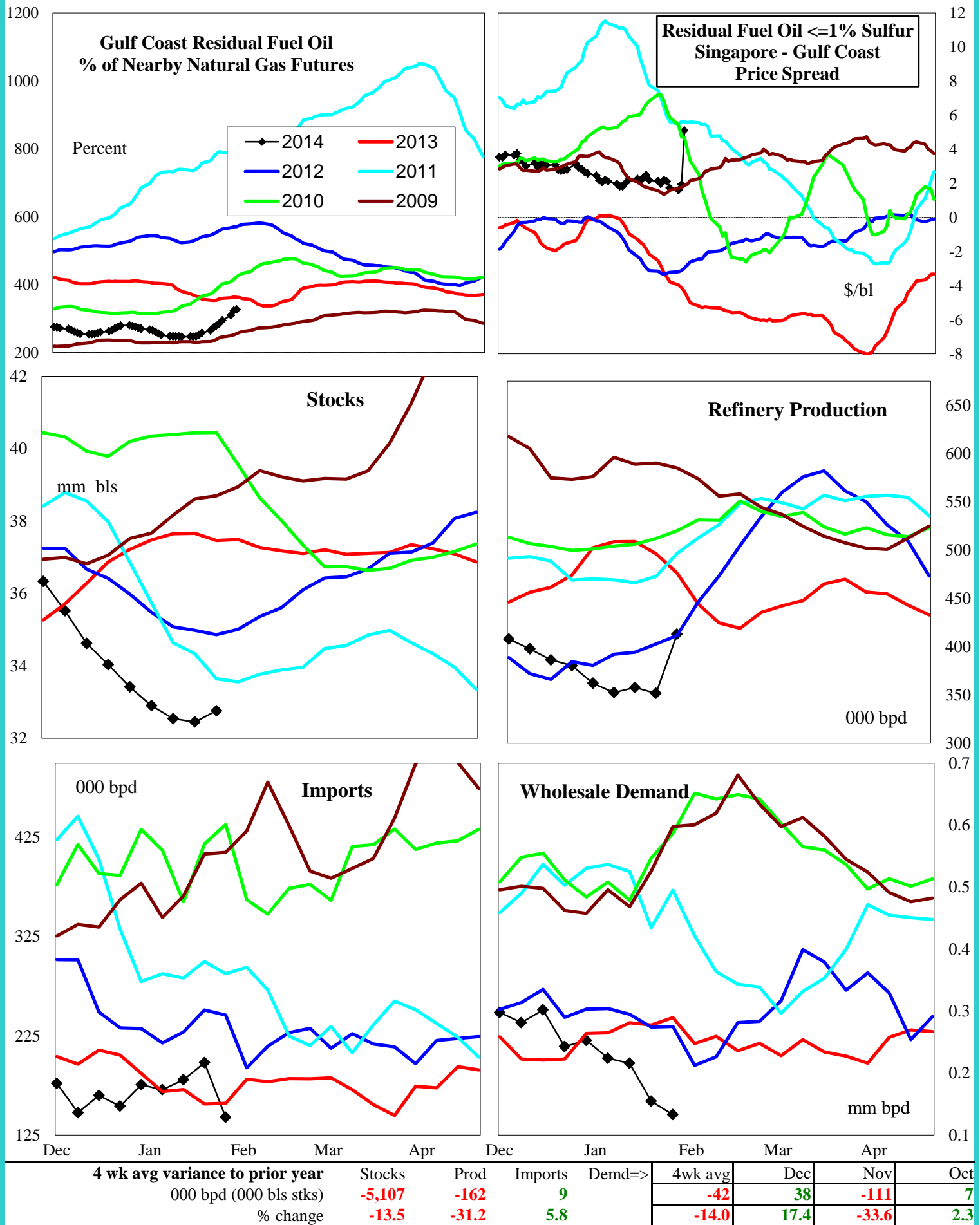
20.7

-74.2

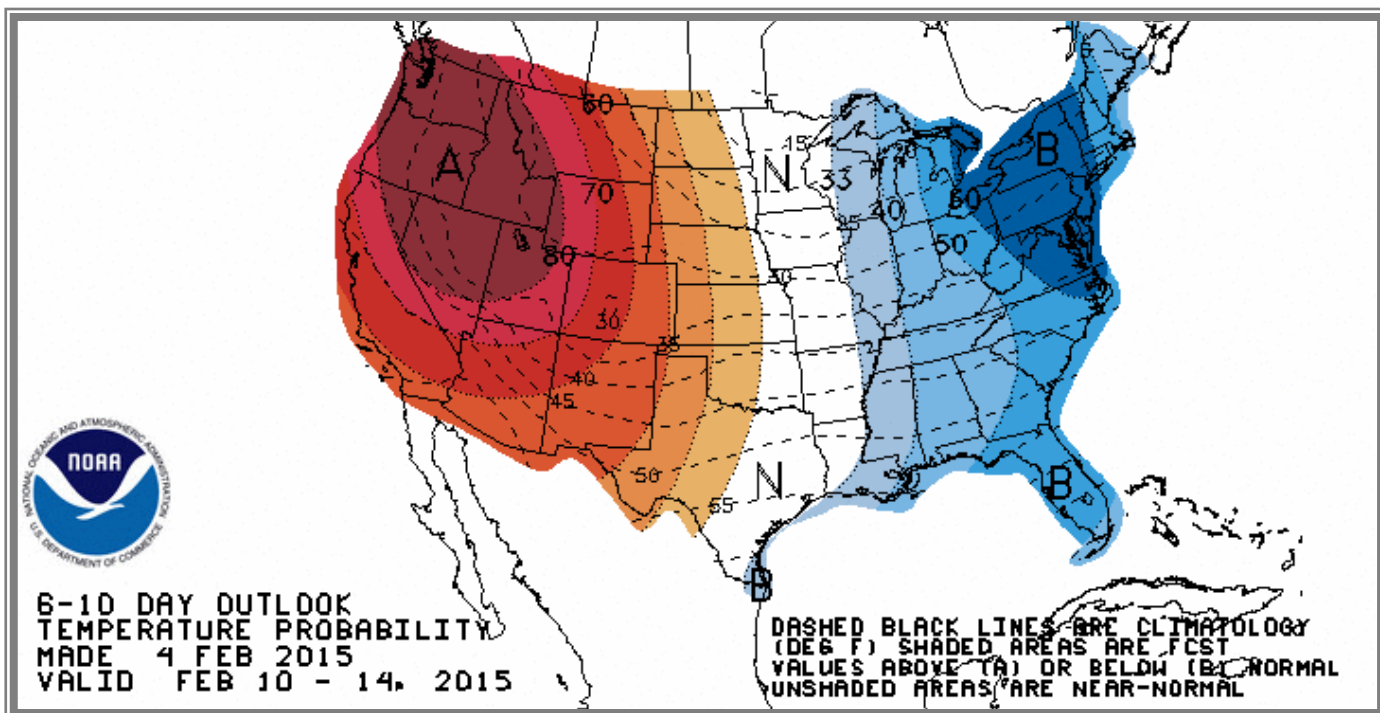
-34.5

-51.4

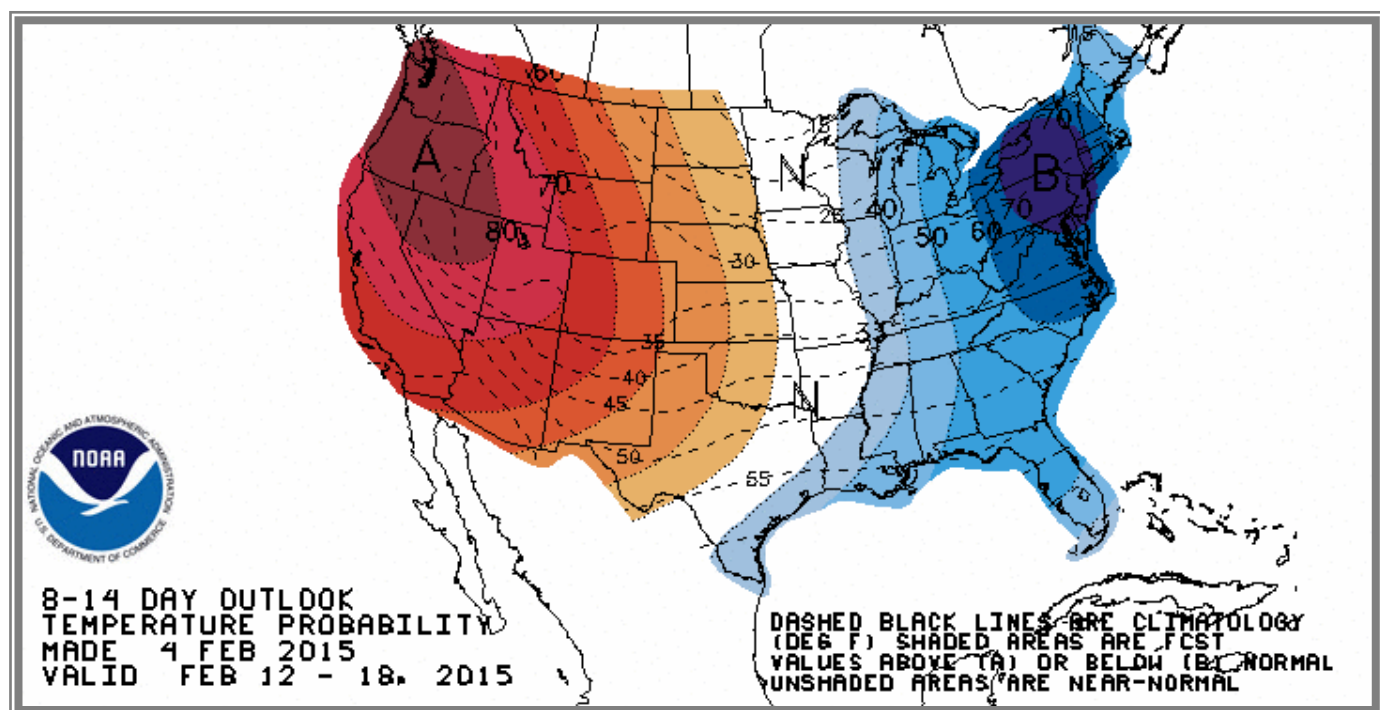
U.S. Residual Fuel Oil Price Spreads and Supply Balance



National Weather Service Climate Prediction Center Degree Days 6 - 10 Day Temperature Forecast



National Weather Service Climate Prediction Center Degree Days 8 - 14 Day Temperature Forecast



American Gas Association Regions

