

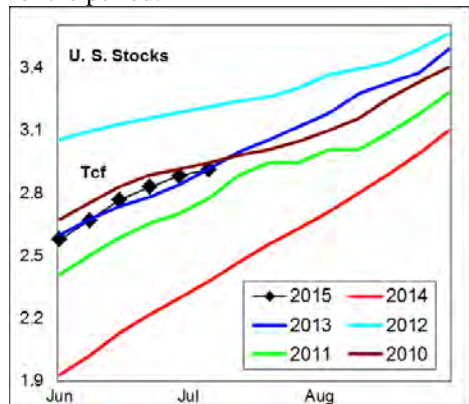
WEEKLY NATURAL GAS SUPPLY and PRICE TRENDS

A Fundamental Petroleum Trends Weekly Report

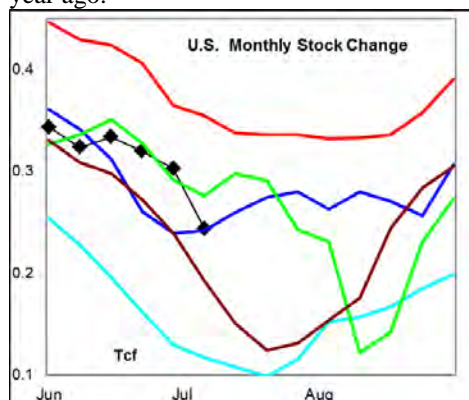
Lehi German Tel: 816.505.0980 www.fundamentalpetroleumtrends.com Monday, August 10, 2015



Summary¹ The stock build of +32 Bcf last week was -50 Bcf below the last 2-yrs for the period.



The latest 4-wk stock change was a build of +242 Bcf, equal to the mid range of the last 3-yrs. The cumulative stock build for the season was +1,451 Bcf, -6% below a year ago.



In the East Region stocks increased +36 Bcf for the week, a build -20 Bcf below the last 2-yrs for the period. Stocks increased +2 Bcf for the week in the West Region, a build equal to the historic low for the period. Stocks saw a -6 Bcf draw in the Producing region, compared to an average +12 Bcf build for the last 2-yrs.

Temperatures were above normal across the much of the country last week ending 07Aug15.

The 6-10 day NWS forecast for the week ending 19Aug15 is for above normal temperatures across much of the country.

¹ Related Web Sites:

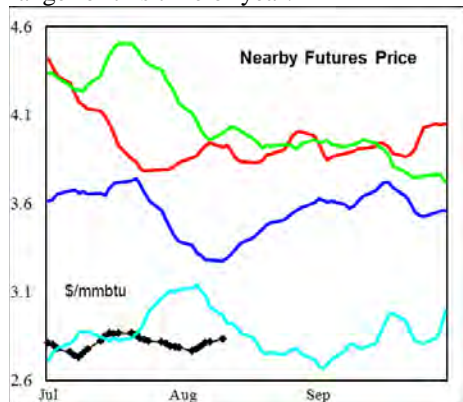
[Data Source is EIA Weekly Statistics](#)

[National Weather Service 6-10 Day](#)

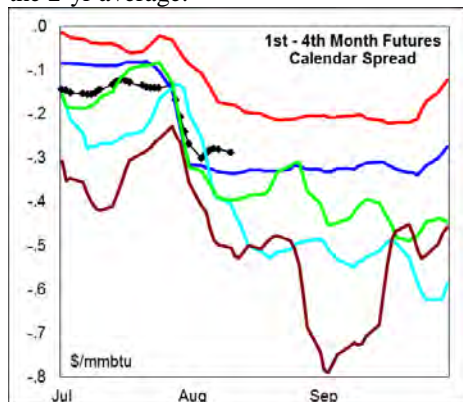
[National Weather Service 10-14 Day](#)

The 8-14 day NWS forecast for the week ending 23Jul15 is for much above normal temperatures in the eastern 1/3rd of the country.

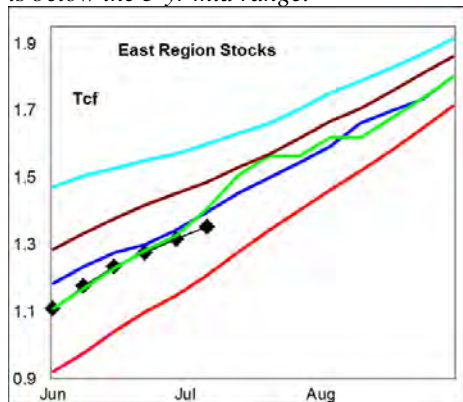
Prices: Nearby gas futures prices increased +\$.09/mmbtu for the week ending 10Aug15, ending at a level below the 5-yr range for this time of year.



The 1st - 4th month forward price curve traded sideways last week at a level below the 2-yr average.



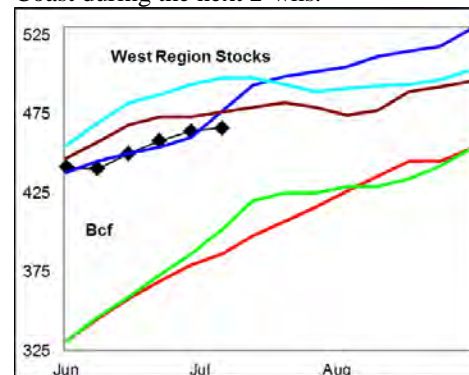
East Region stocks increased +36 Bcf for the week, a build -20 Bcf below the last 2-yrs for the period. *The current stock level is below the 3-yr mid range.*



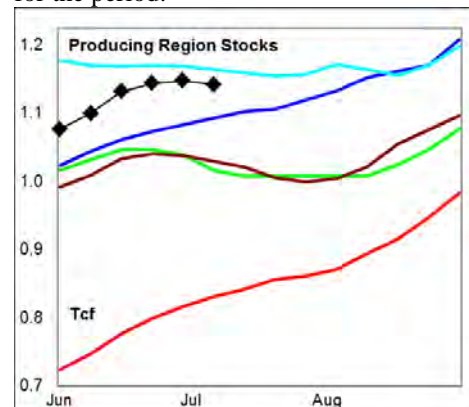
Temperatures are forecast to be much above normal for the next 2-wks.

West Region stocks increased +2 Bcf for the week, a build equal to the historic low

for the period. Stock levels ended the week below the 3-yr mid range, although +21% above last year. Temperatures are forecast to be above normal on the West Coast during the next 2-wks.



Producing Region stocks decreased -6 Bcf for the week, a compared to an average build of +12 Bcf build for the last 2-yrs. Stock levels ended the week ner 5-yr highs for the period.



Temperatures are forecast to be above normal for the next 2-wks.

Residual Fuel Oil Switching: The price spread between fuel oil and natural gas ended the week at a level below four of the last 5-yrs.

Outlook: Above normal temperatures are forecast for most of the country during the next 2-wks. Stock builds have dropped to the 3-yr mid range for the last month on above normal electric power demand that has been driven by above normal temperatures. Look for futures prices to continue to trade within the current 60-day trading range on ample supply.

NATURAL GAS: Graph Link and Weekly Summary



Report prepared as of: August 10, 2015

For the week ending: 31-Jul-15

Weekly Trends in Stocks and Heating Degree Days for the week ending:

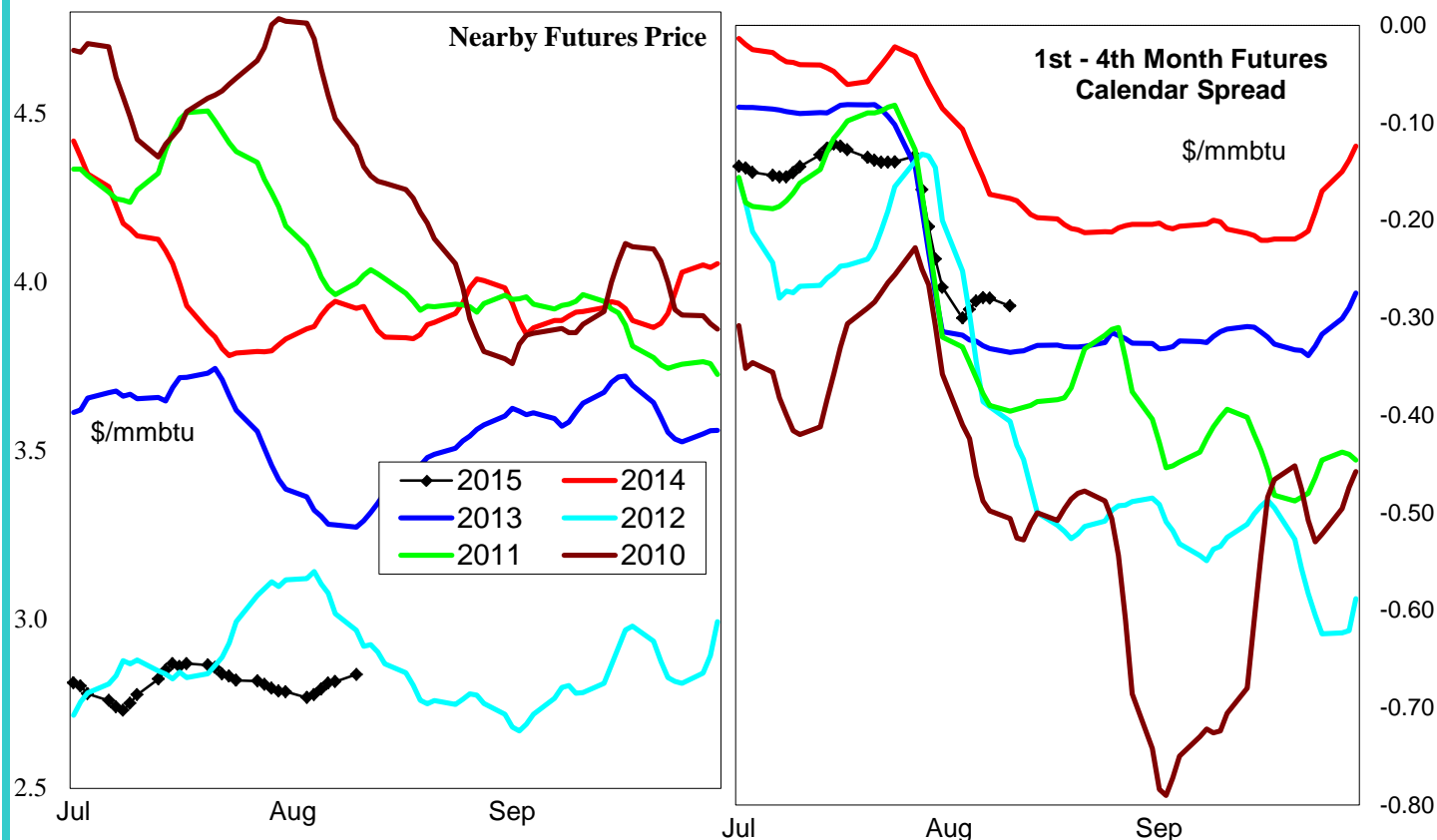
Week ending:	31-Jul-15			15-Jun-13		22-Jun-13		29-Jun-13	
Region	Weekly Stocks			Weekly Heating Degree Days					
	Bcf	Change vs prior:		Change vs prior week	% of normal	Change vs prior week	% of normal	Change vs prior week	% of normal
		Week Bcf	Year (%)						
U.S. Total	2,912	32	22.5	-14	-45%	-2	-33%	-3	-77%
East	1,354	36	11.9	-17	-39%	-2	-18%	-4	-74%
West	466	2	20.7	-12	-58%	-2	-55%	-5	-78%
Producing	1,092	-6	39.8	-4	-100%	0	-100%	0	-100%

Seasonal Trends in Stocks and Heating Degree Days

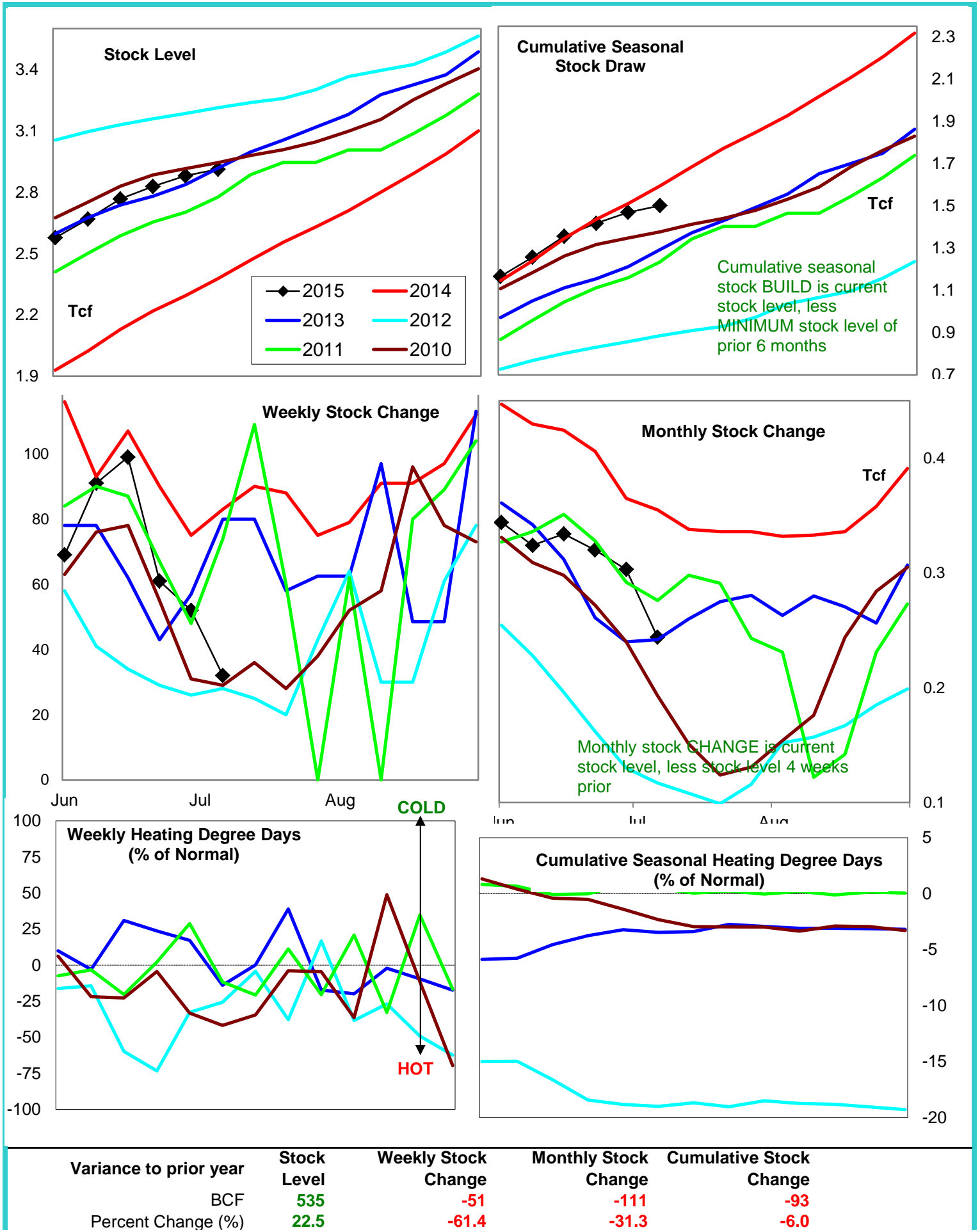
	Cumulative Stock Change			Cumulative Heating Degree Days					
	Bcf	Change vs prior year Bcf	%	CHDD's vs normal	% of normal	CHDD's vs normal	% of normal	CHDD's vs normal	% of normal
U.S. Total	1,451	-93	-6.4	6	-3.2	4	-3.2	1	-3.3
East	850	-50	-5.9	6	-2.9	4	-2.9	1	-2.9
West	128	-97	-75.8	10	-4.6	8	-4.7	3	-4.9
Producing	544	118	21.7	0	-4.0	0	-4.1	0	-4.1

Futures Market Price Trends

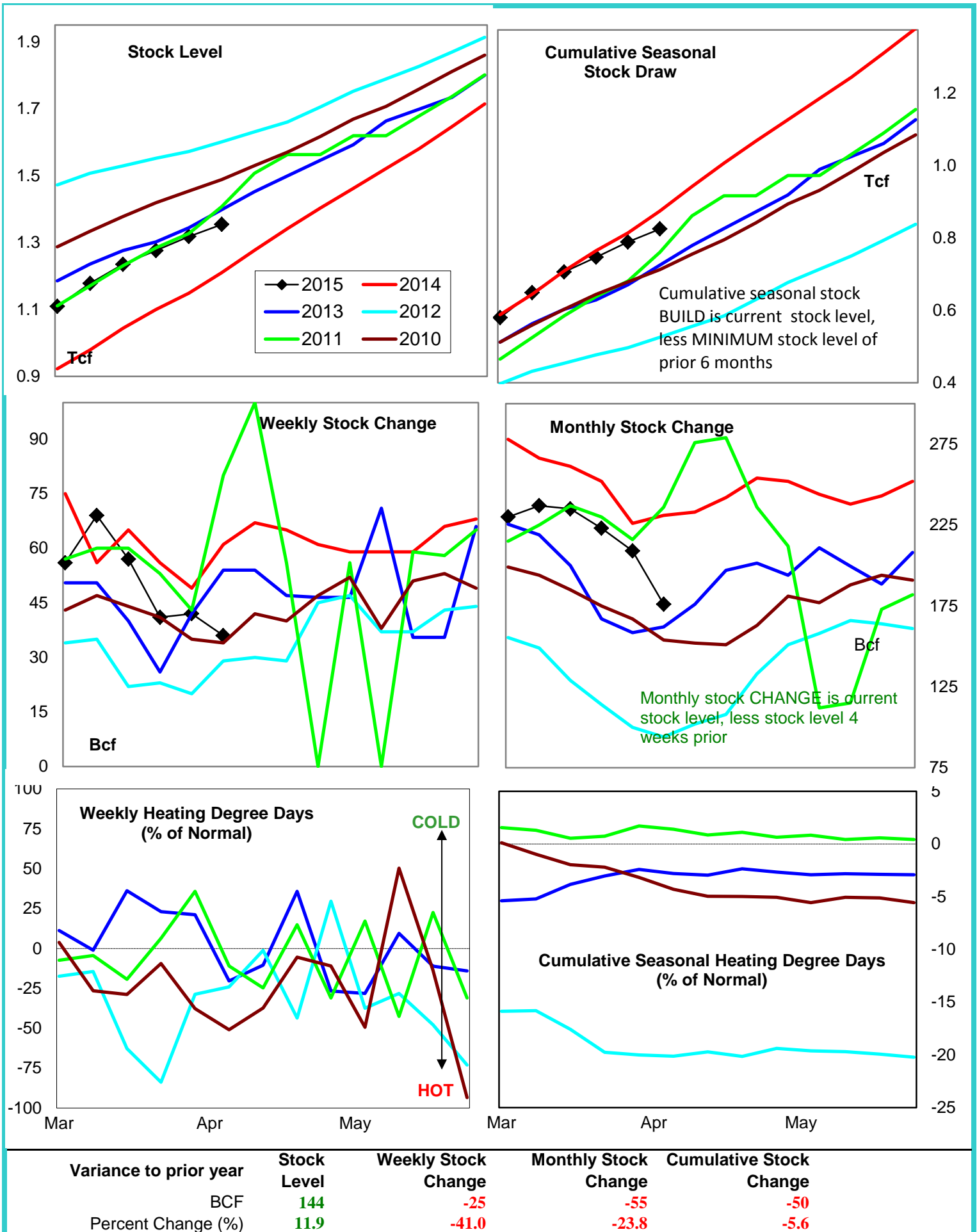
Date:	10-Aug-15	Change vs prior week, month, year		
		4-Aug-15	14-Jul-15	20-Aug-14
1st month Futures	2.84	0.03	0.00	-1.10
% change	xxxxx	0.9	-0.1	-27.9



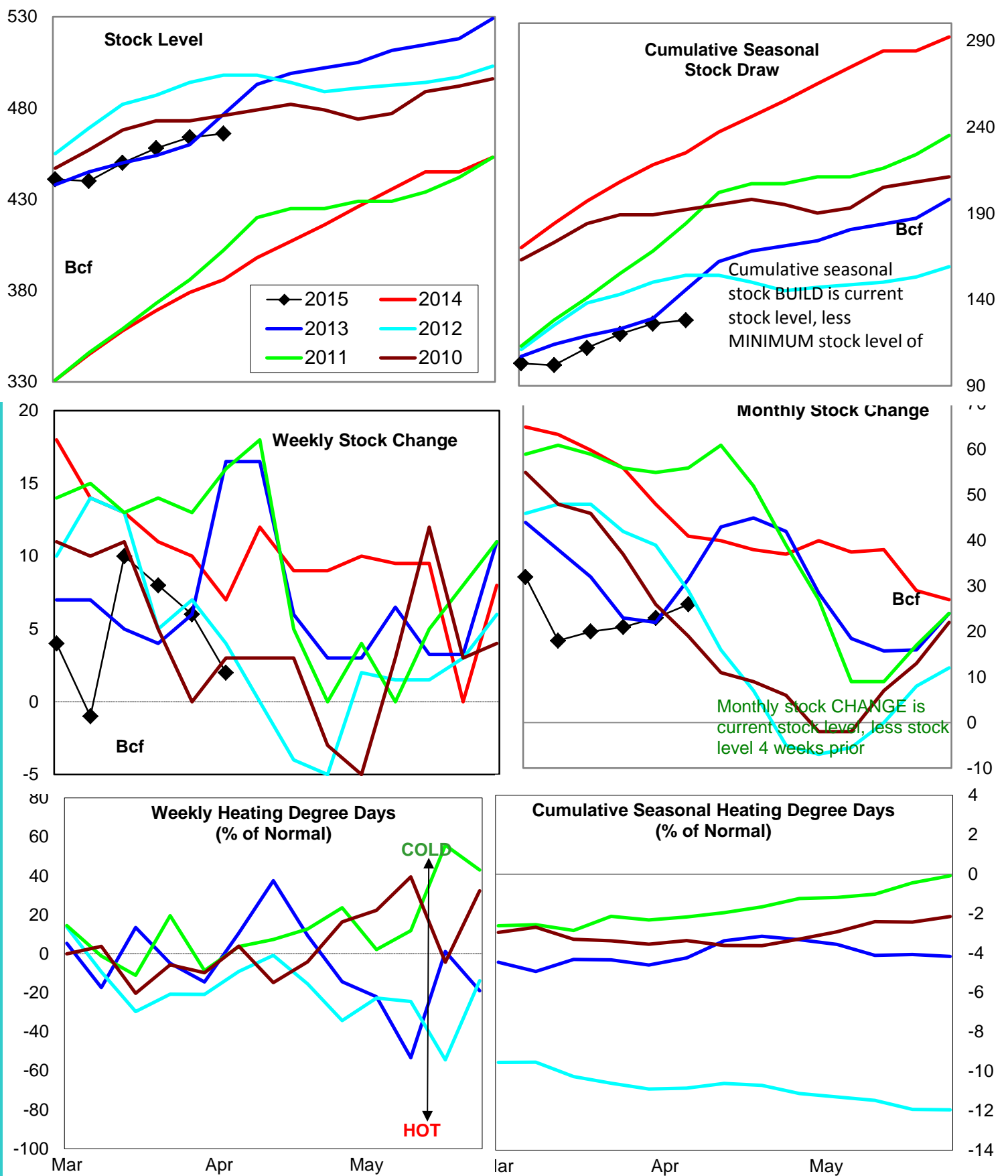
United States Natural Gas Stock and Weather Trends



Natural Gas East Region Stock and Weather Trends



Natural Gas West Region Stock and Weather Trends



Variance to prior year

Stock Level

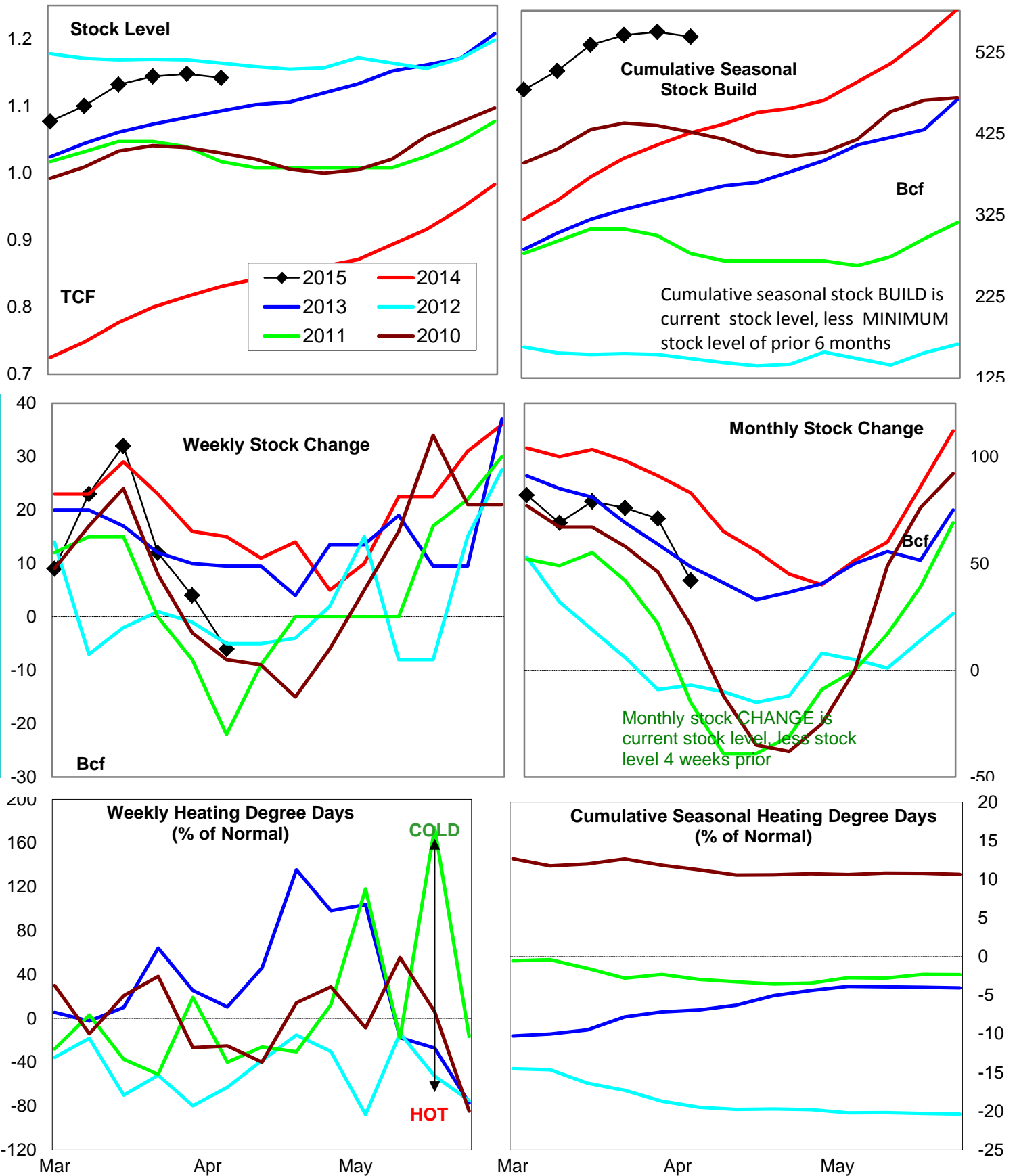
Weekly Stock Change

Monthly Stock Change

Cumulative Stock Change

BCF
Percent Change (%)80
20.7-5
-71.4-15
-36.6-97
-43.1

Natural Gas Producing Region Stock and Weather Trends



Variance to prior year

Stock Level

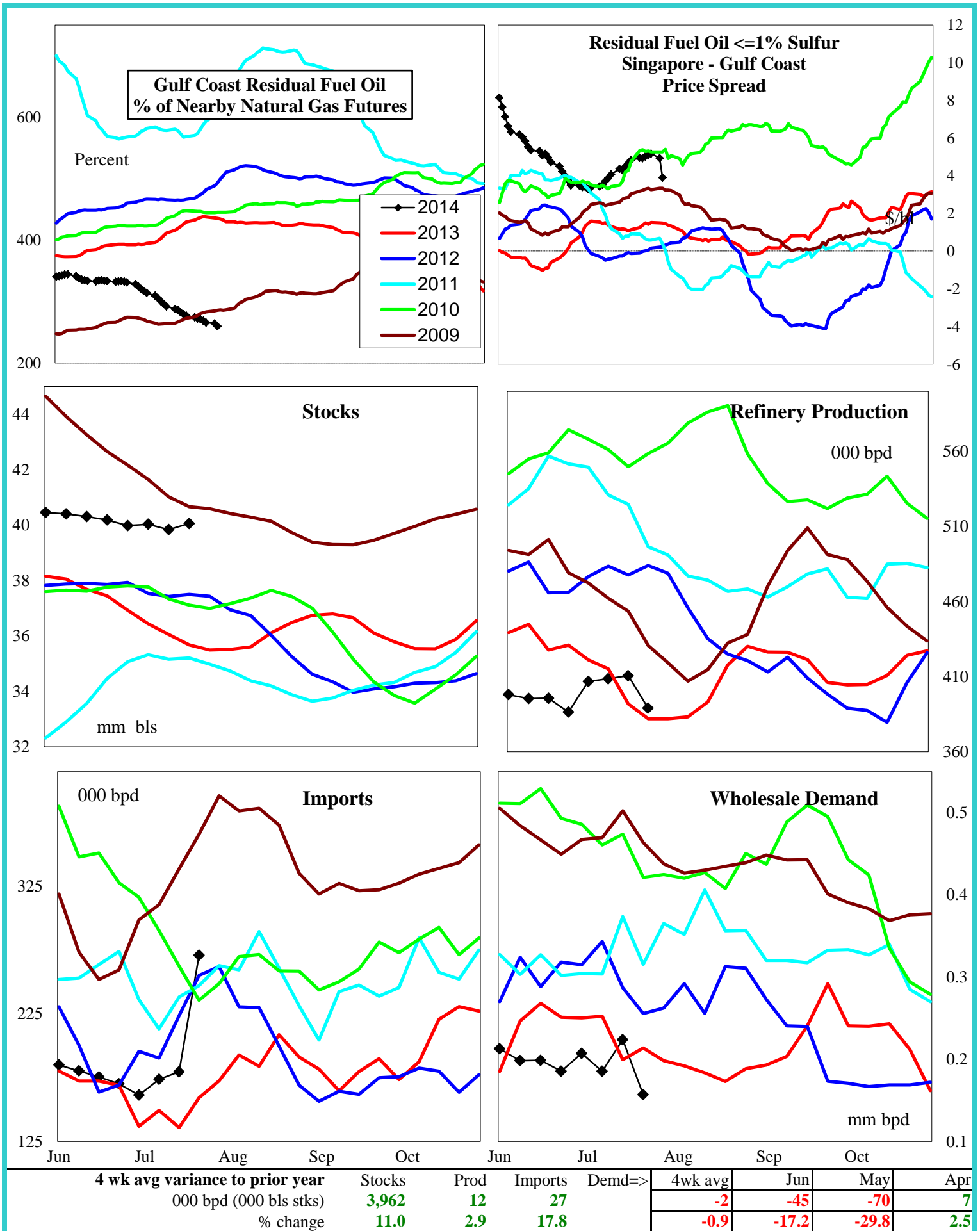
Weekly Stock Change

Monthly Stock Change

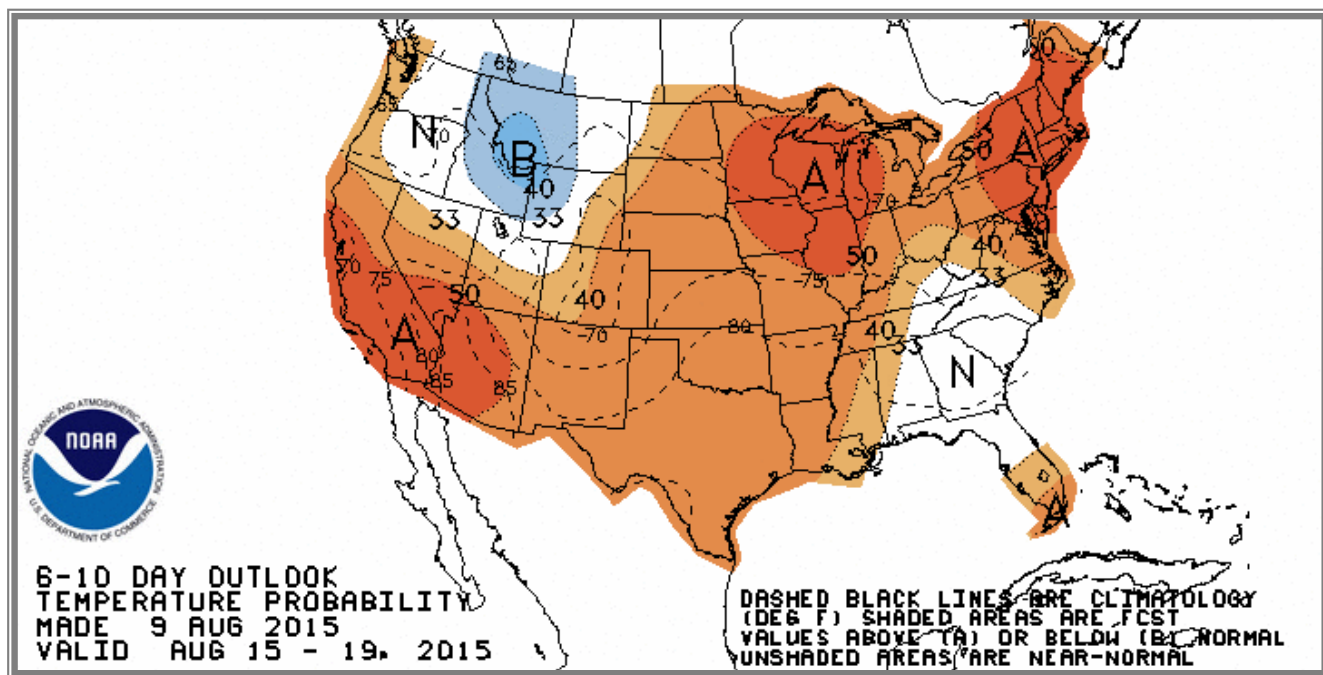
Cumulative Stock Change

BCF
Percent Change (%)311
39.8-21
-140.0-41
-49.4118
27.7

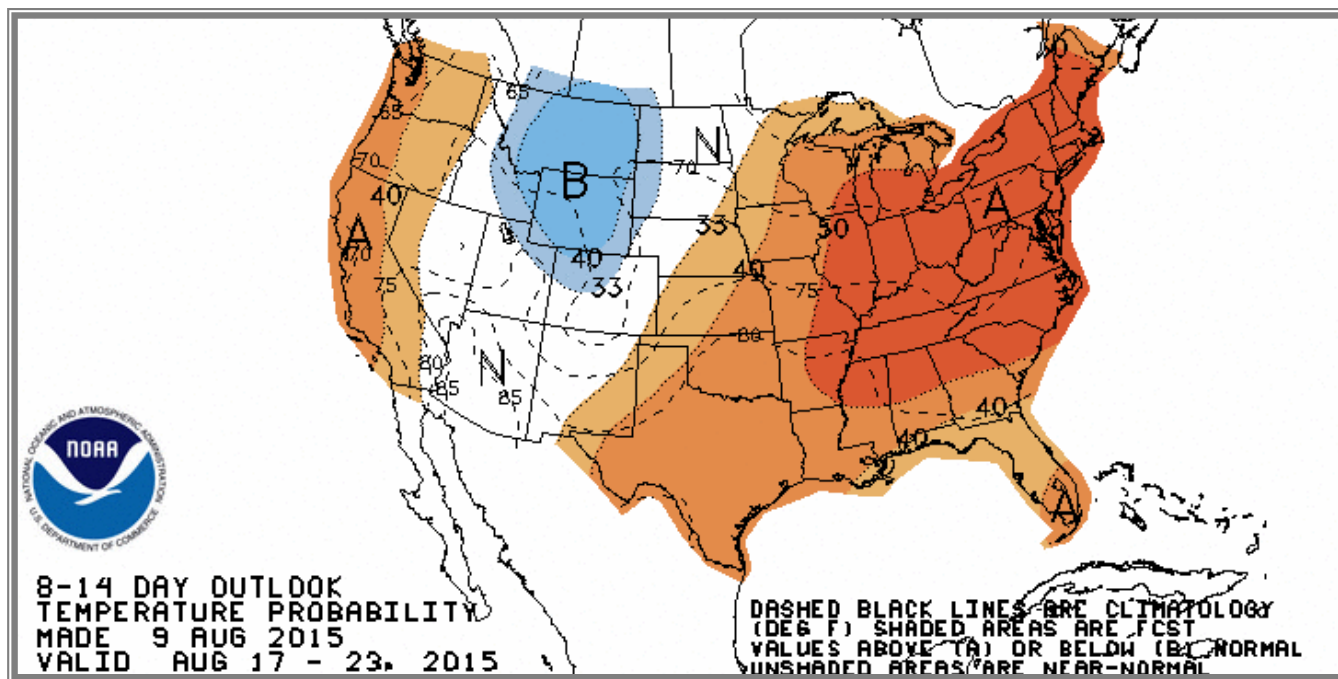
U.S. Residual Fuel Oil Price Spreads and Supply Balance



National Weather Service Climate Prediction Center Degree Days 6 - 10 Day Temperature Forecast



National Weather Service Climate Prediction Center Degree Days 8 - 14 Day Temperature Forecast



American Gas Association Regions

