



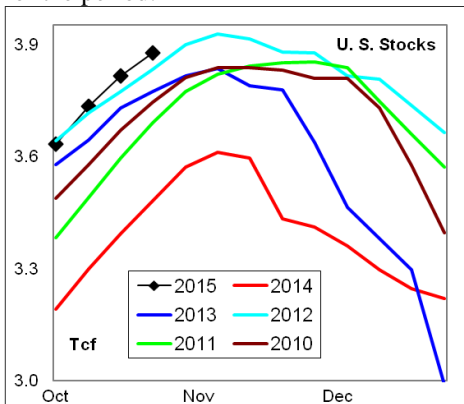
# WEEKLY NATURAL GAS SUPPLY and PRICE TRENDS

## A Fundamental Petroleum Trends Weekly Report

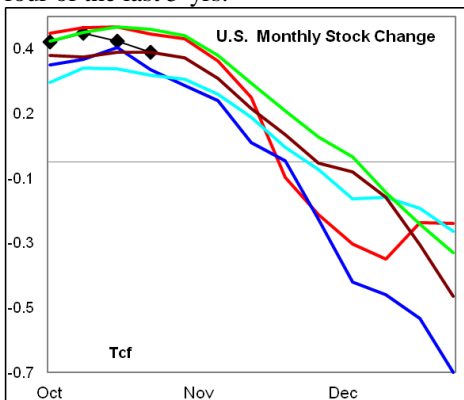
Lehi German Tel: 816.505.0980 [www.fundamentalpetroleumtrends.com](http://www.fundamentalpetroleumtrends.com) Monday, November 02, 2015



**Summary**<sup>1</sup> The stock build of +63 Bcf last week was equal to the 3-yr mid range for the period.



The latest 4-wk stock change was a build of +341 Bcf, a level which exceeded the 3-yr mid range. The cumulative stock build for the season was +2,248 Bcf, -13% below a year ago, although greater than four of the last 5-yrs.



In the East Region stocks increased +33 Bcf for the week, a build greater than the 3-yr mid range. Stocks increased +7 Bcf for the week in the West Region, a build comparable to the 3-yr mid range. Stocks increased +23 Bcf in the Producing region, a build equal to the historic mid range.

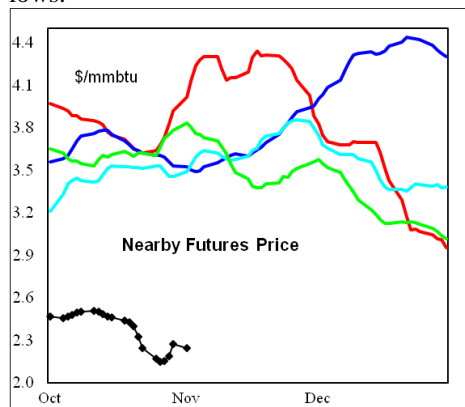
**Temperatures** were well above normal across the much of the country last week ending 30Oct14.

The 6-10 day NWS forecast for the week ending 11Nov15 is for above normal temperatures across the eastern 2/3rds of

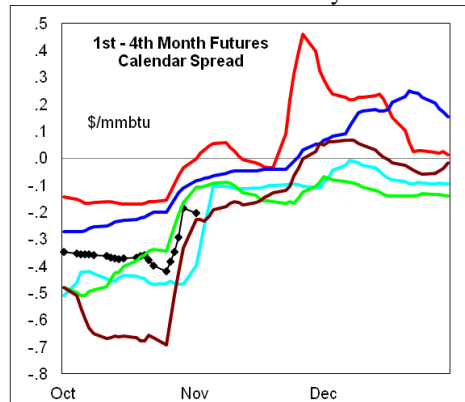
country.

The 8-14 day NWS forecast for the week ending 15Nov15 is for much above normal temperatures across the eastern 2/3rds of the country; with below average temperatures in the intermountain region.

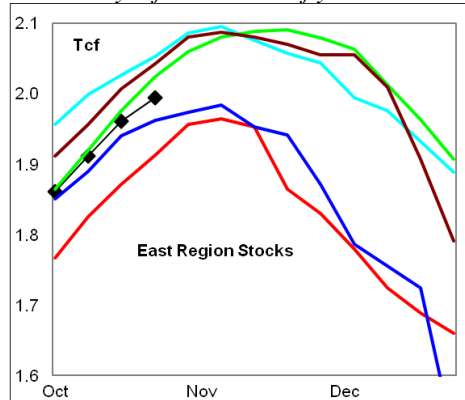
**Prices:** Nearby gas futures prices increased +\$0.18/mmbtu for the week ending 02Nov15, up from near \$2/mmbtu record lows.



The 1<sup>st</sup> - 4<sup>th</sup> month forward price curve trended higher last week, on the roll from November to December nearby futures.

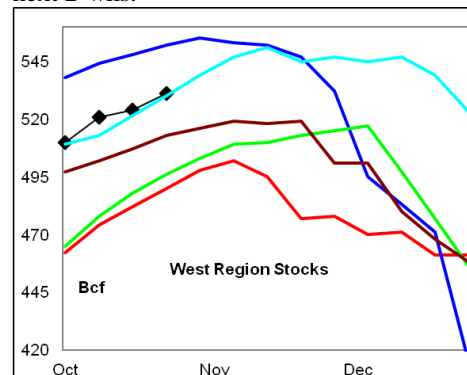


**East Region** stocks increased +33 Bcf for the week, a build greater than the 3-yr mid range. *The current stock level is above the last 2-yrs for this time of year.*

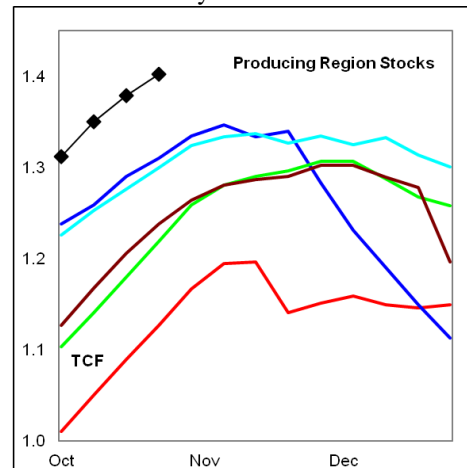


Temperatures are forecast to be above normal for the next 2-wks.

**West Region** stocks increased +7 Bcf for the week, a build comparable to the 3-yr mid range. Stock levels ended the week equal to the 3-yr mid range, and +8% above last year. The monthly rate of stock build matched the 3-yr mid range for this time of year. Temperatures are forecast to be below normal in this region during the next 2-wks.



**Producing Region** stocks increased +23 Bcf for the week, a build equal to the 5-yr mid range. Stock levels ended the week at new 5-yr highs for this time of year and +26% above last year.



Temperatures are forecast to be above normal for the next 2-wks.

**Residual Fuel Oil Switching:** The price spread between fuel oil and natural gas ended the week at a level well below the historic range.

**Outlook:** Much above normal temperatures are forecast for the eastern 2/3rds of the country during the next 2-wks, and below normal in the west. Stock levels are at record highs for the period. The rate of stock building remains just below last year's record rate. With very high stock levels, an above average rate of build and warm temperatures forecast through mid month, prices should remain depressed during the balance of the

<sup>1</sup> Related Web Sites:

[Data Source is EIA Weekly Statistics](#)

[National Weather Service 6-10 Day](#)

[National Weather Service 10-14 Day](#)



## NATURAL GAS: Graph Link and Weekly Summary

Report prepared as of: November 2, 2015

For the week ending: 23-Oct-15

### Weekly Trends in Stocks for the week ending:

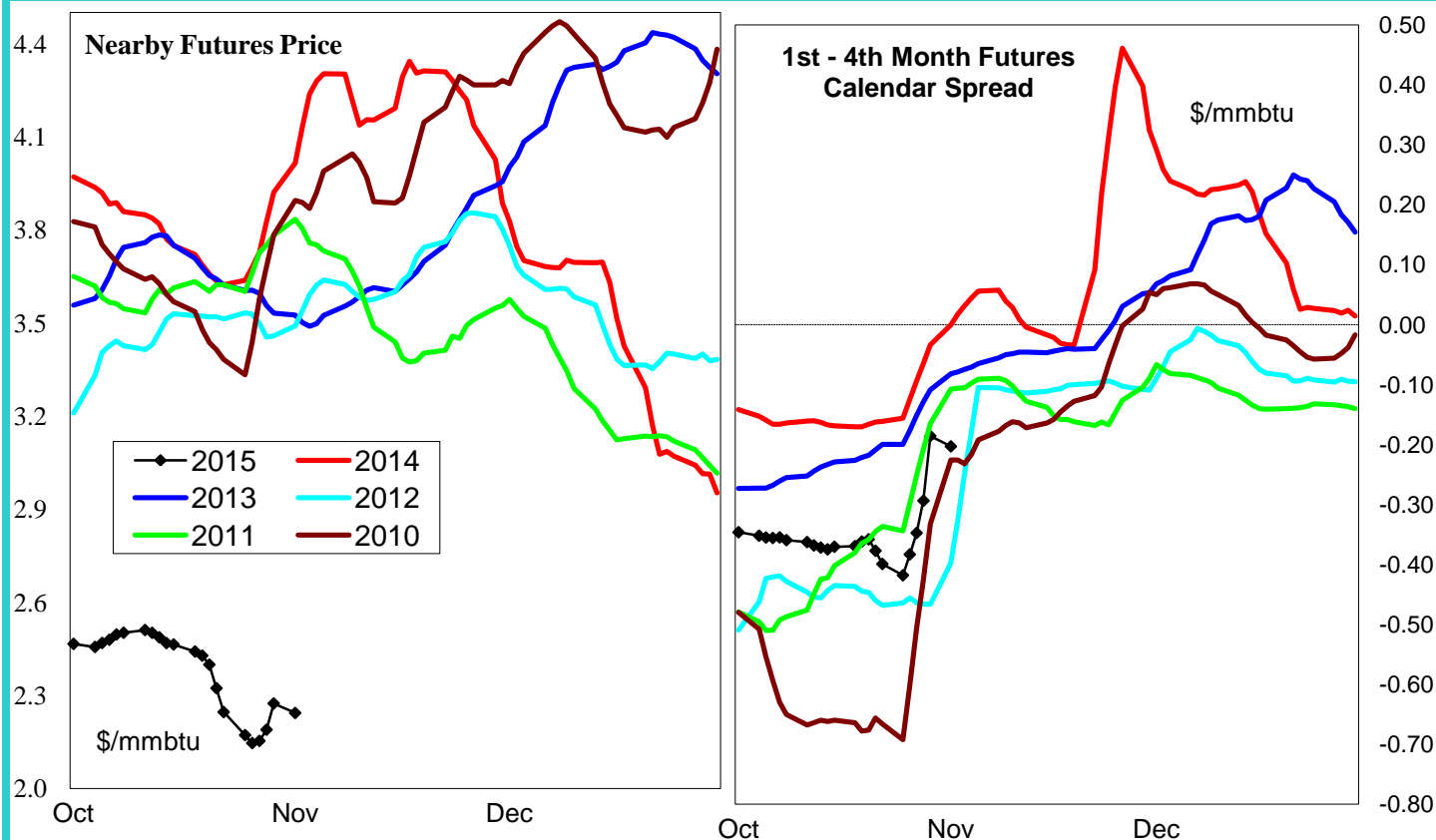
Week ending:	23-Oct-15		
Region	Weekly Stocks		
	Bcf	Change vs prior: Week Bcf	Year (%)
<b>U.S. Total</b>	<b>3,877</b>	<b>63</b>	<b>11.4</b>
<b>East</b>	<b>1,994</b>	<b>33</b>	<b>4.2</b>
<b>West</b>	<b>531</b>	<b>7</b>	<b>8.4</b>
<b>Producing</b>	<b>1,352</b>	<b>23</b>	<b>25.5</b>

### Seasonal Trends in Stocks

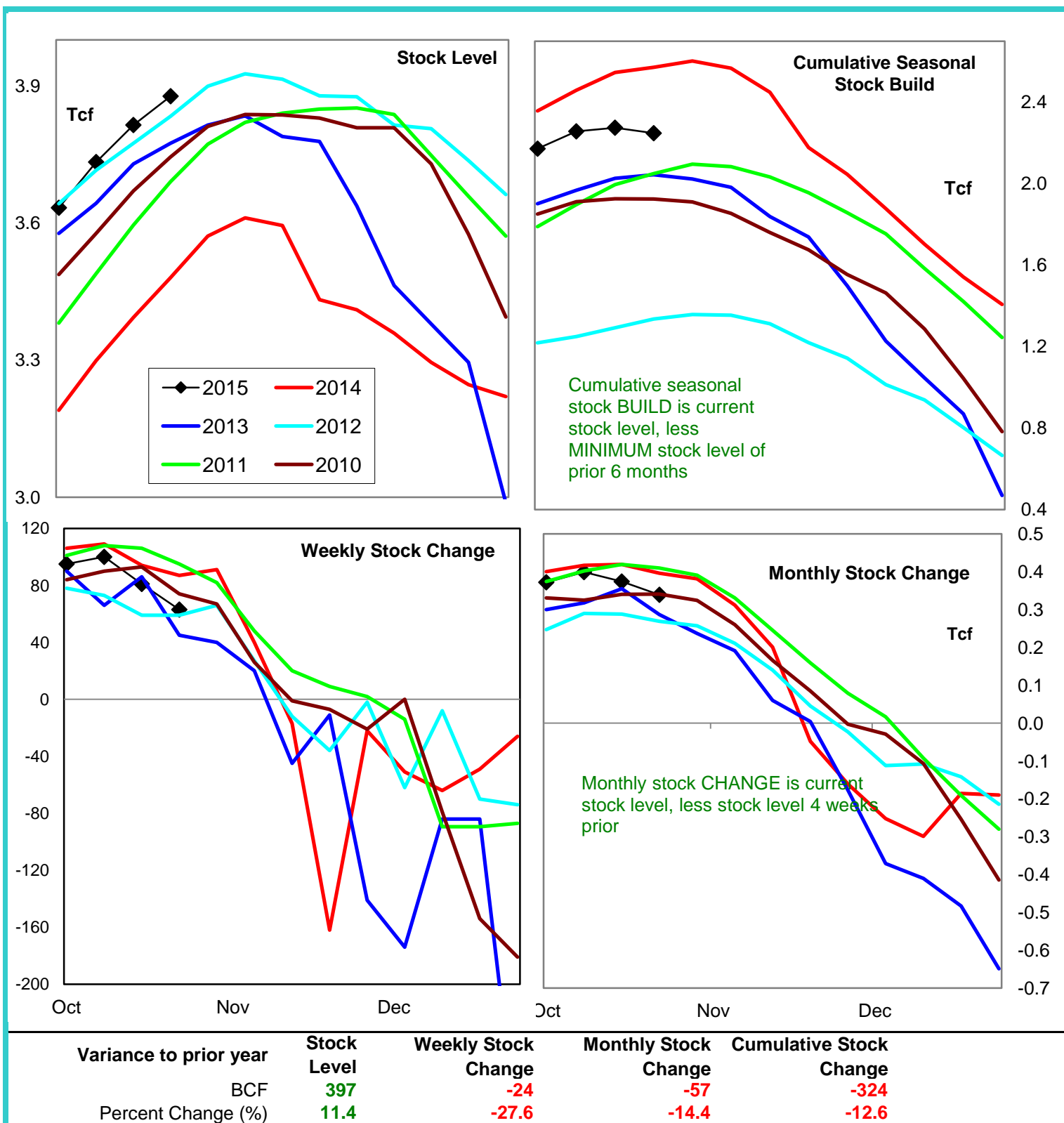
	Cumulative Stock Change		
	Bcf	Change vs prior year Bcf	%
<b>U.S. Total</b>	<b>2,248</b>	<b>-324</b>	<b>-14.4</b>
<b>East</b>	<b>1,434</b>	<b>-146</b>	<b>-10.1</b>
<b>West</b>	<b>174</b>	<b>-138</b>	<b>-79.3</b>
<b>Producing</b>	<b>640</b>	<b>-41</b>	<b>-6.3</b>

### Futures Market Price Trends

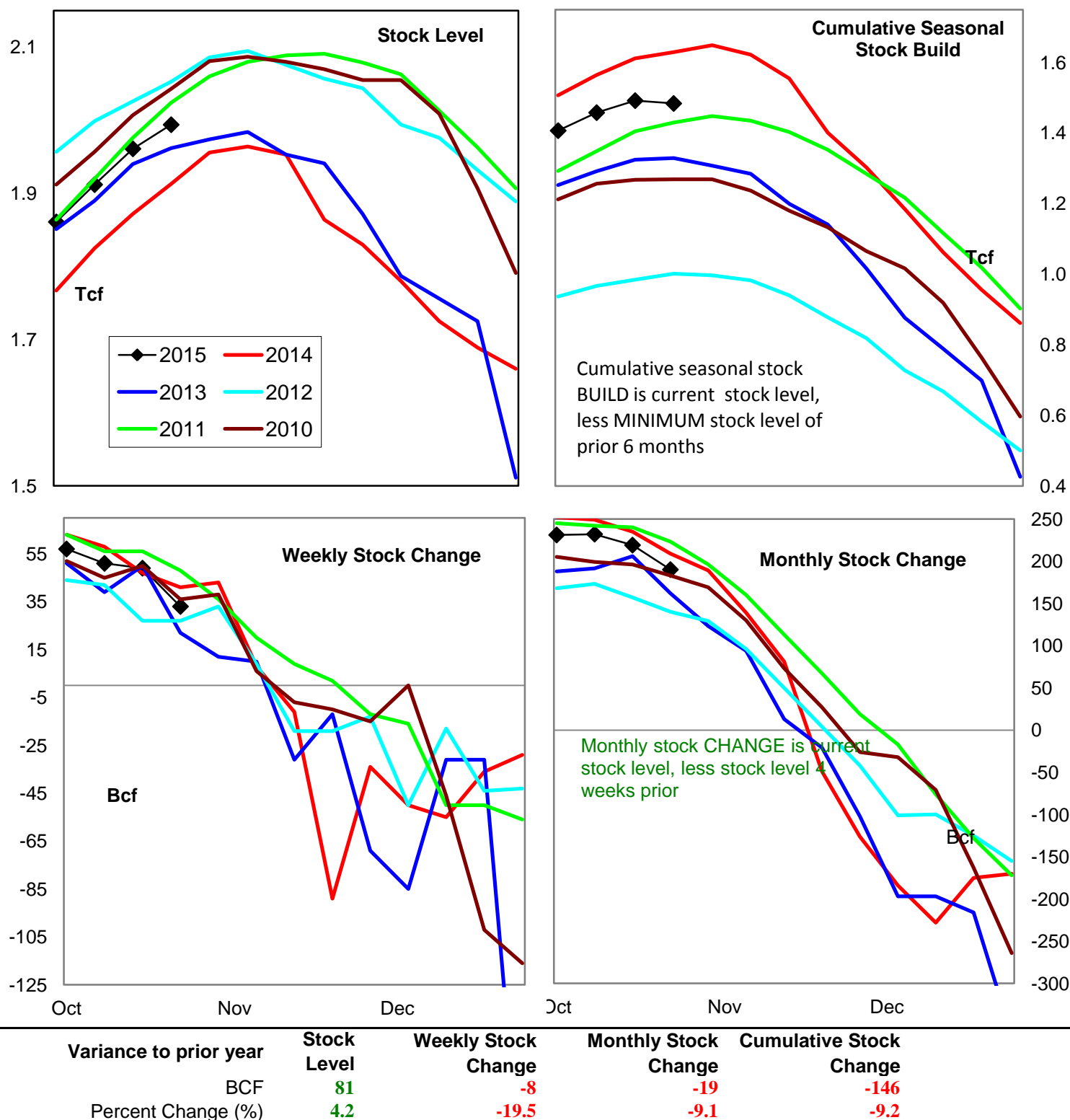
Date:	2-Nov-15	Change vs prior week, month, year		
		27-Oct-15	6-Oct-15	12-Nov-14
<b>1st month Futures</b>	<b>2.24</b>	<b>0.15</b>	<b>-0.23</b>	<b>-2.10</b>
<b>% change</b>	<b>xxxxx</b>	<b>7.2</b>	<b>-9.2</b>	<b>-48.3</b>



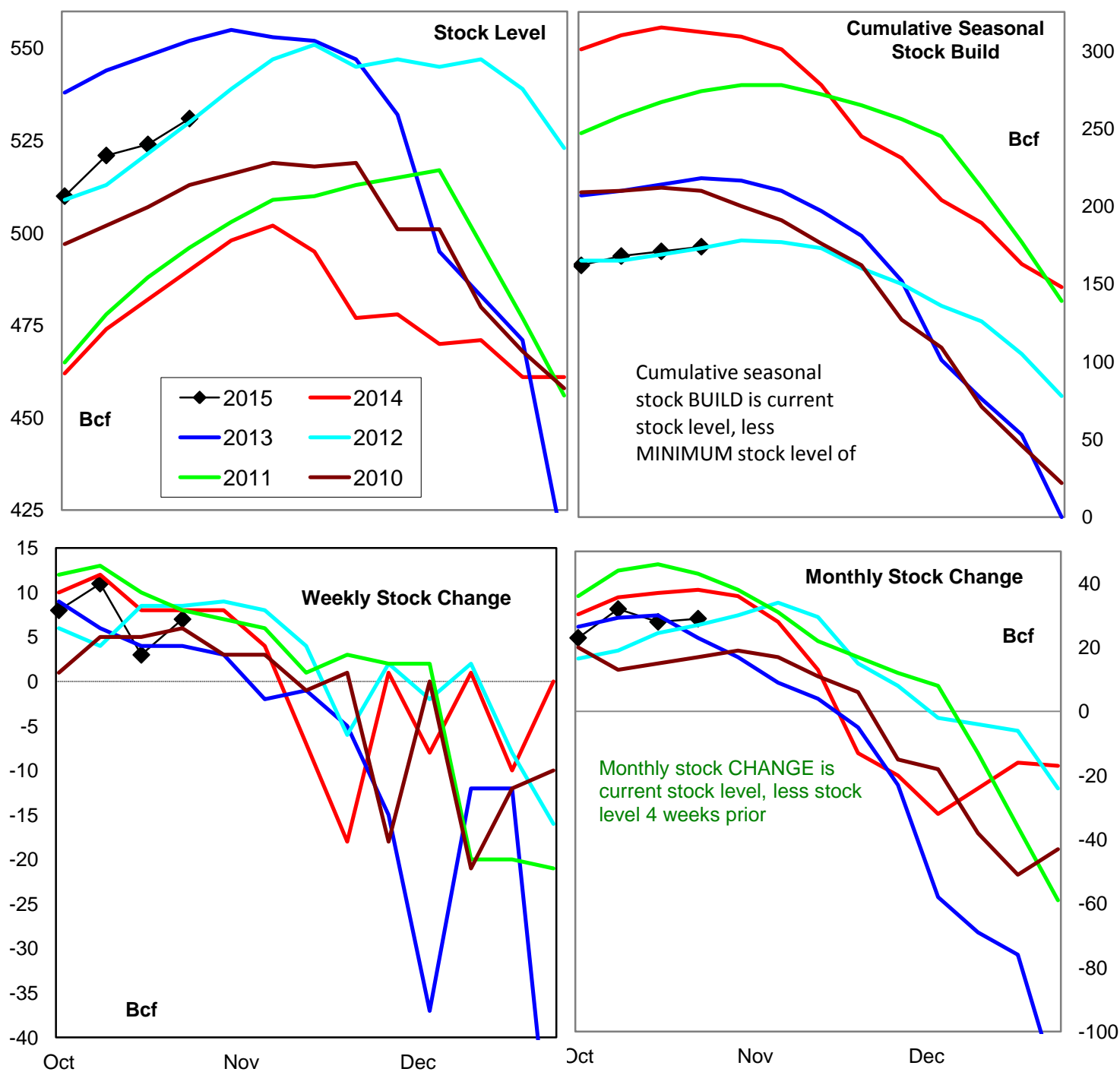
## United States Natural Gas Stock Trends



## Natural Gas East Region Stock Trends

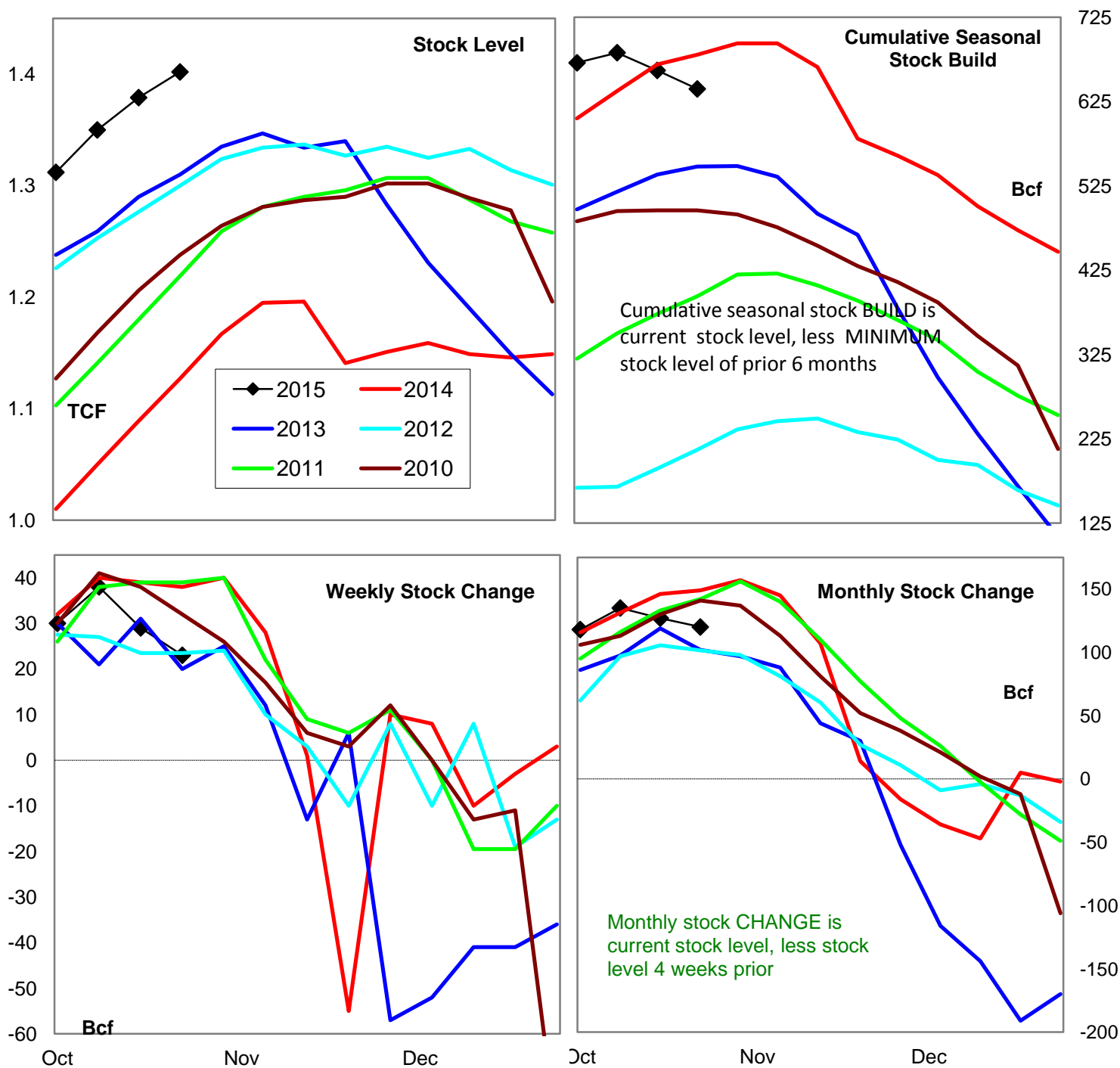


## Natural Gas West Region Stock Trends



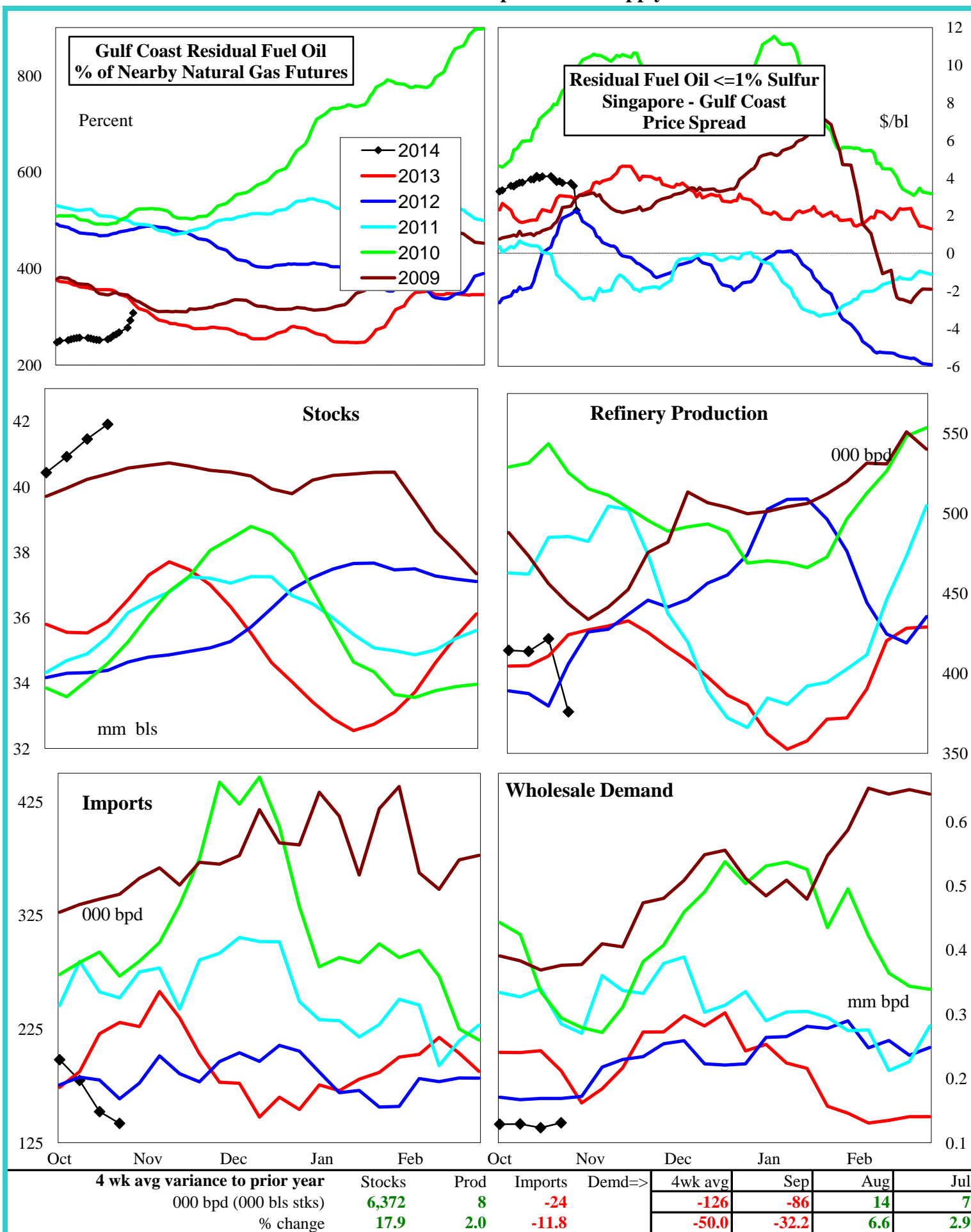
Variance to prior year	Stock Level	Weekly Stock Change	Monthly Stock Change	Cumulative Stock Change
BCF	41	-1	-9	-138
Percent Change (%)	8.4	-12.5	-23.7	-44.2

## Natural Gas Producing Region Stock Trends

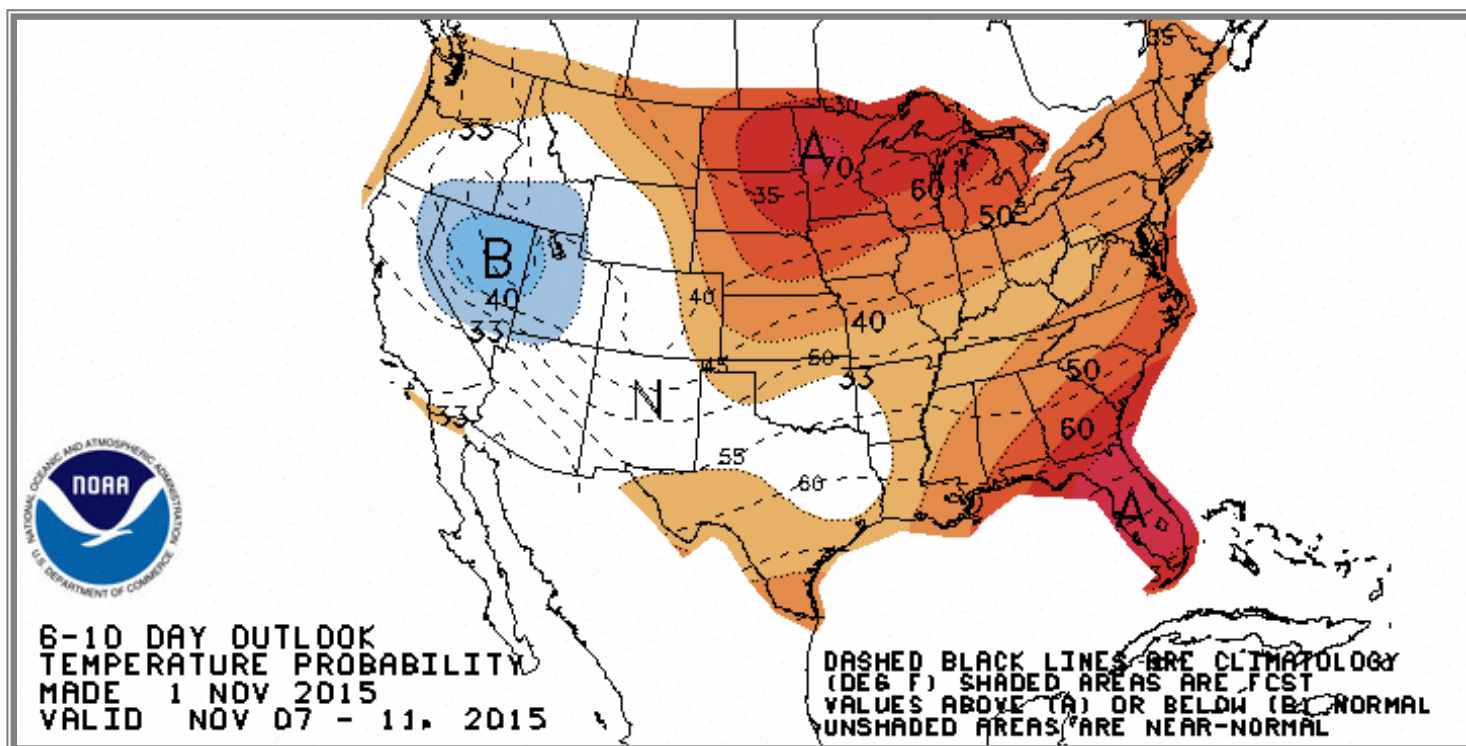


Variance to prior year	Stock Level	Weekly Stock Change	Monthly Stock Change	Cumulative Stock Change
BCF	275	-15	-29	-41
Percent Change (%)	25.5	-39.5	-19.5	-6.0

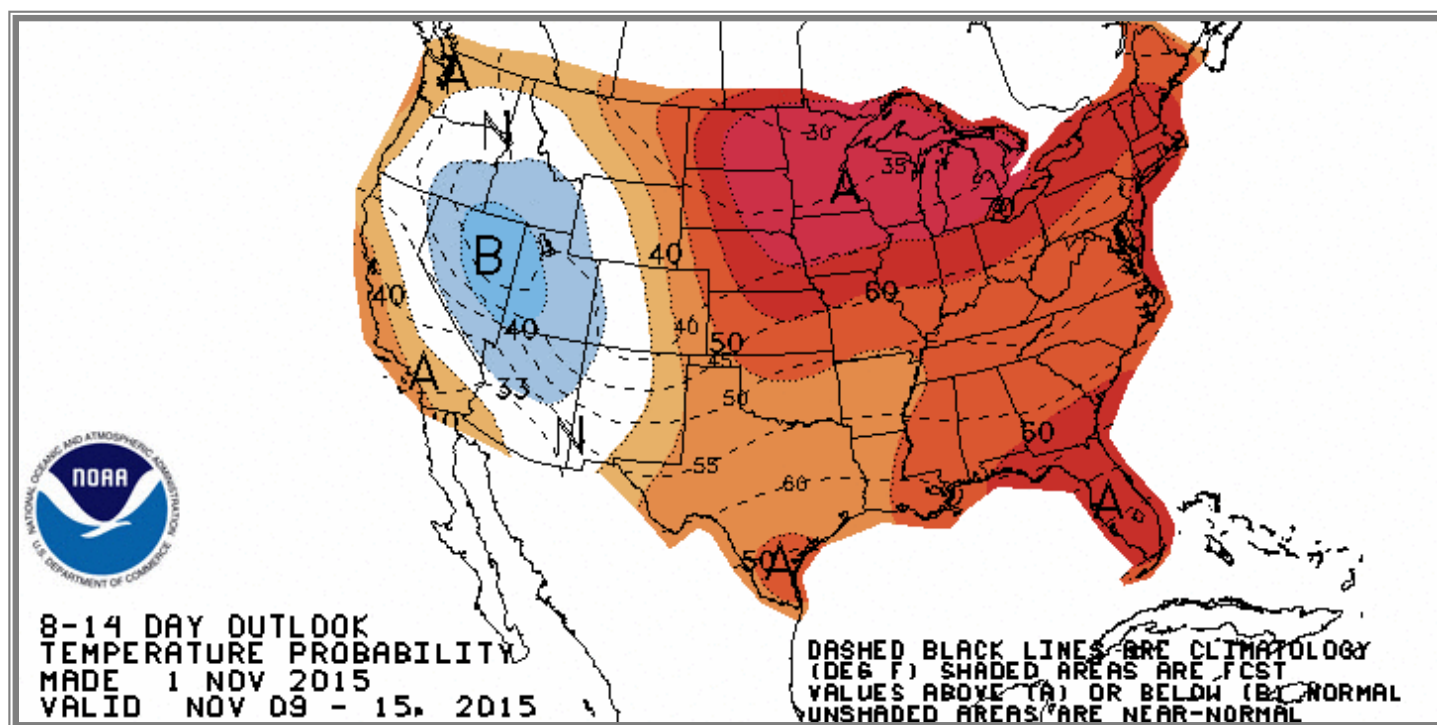
## U.S. Residual Fuel Oil Price Spreads and Supply Balance



## National Weather Service Climate Prediction Center Degree Days 6 - 10 Day Temperature Forecast



## National Weather Service Climate Prediction Center Degree Days 8 - 14 Day Temperature Forecast



# American Gas Association Regions

