



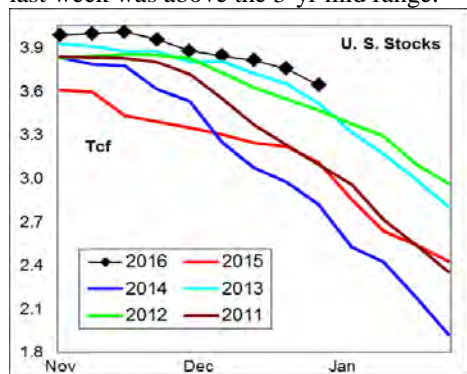
# WEEKLY NATURAL GAS SUPPLY and PRICE TRENDS

## A Fundamental Petroleum Trends Weekly Report

Lehi German Tel: 816.505.0980 [www.fundamentalpetroleumtrends.com](http://www.fundamentalpetroleumtrends.com) Monday, January 11, 2016



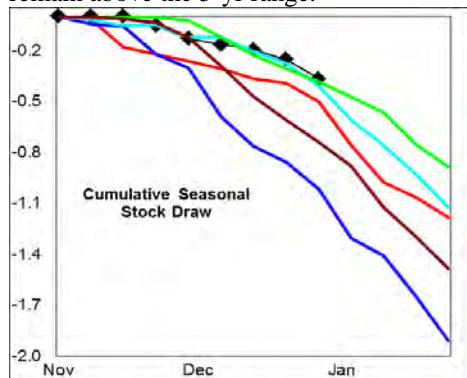
**Summary**<sup>1</sup> The stock draw of -113 Bcf last week was above the 3-yr mid range.



The latest 4-wk stock change was a draw of -240 Bcf, a record low draw for this time of year.



Cumulative seasonal draw was also a record low at -366 Bcf. As a result, stocks remain above the 5-yr range.



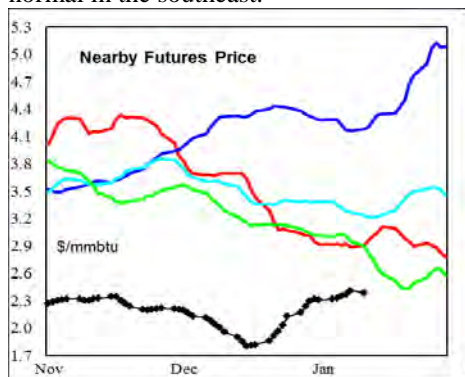
In the East Region stocks decreased -61 Bcf for the week, matching the 3-yr low for the period. Stocks fell -35 Bcf in the

West Region, a record draw for this time of year; driven by much below normal temperatures in the area. Stocks decreased -17 Bcf in the Producing region, a draw less than each of the last 3-yrs.

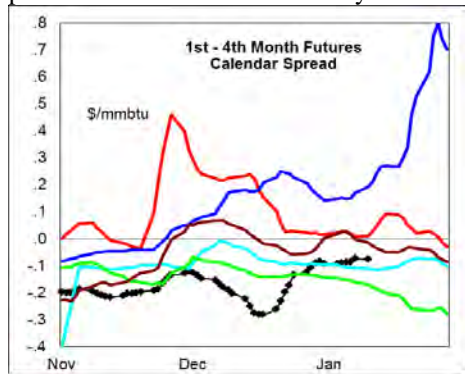
**Temperatures** were above normal across the eastern 2/3rds of the country East of the Rockies.

The 6-10 day NWS forecast for the week ending 21Jan16 is for below normal temperatures across the eastern 1/2 of the country and above normal temperatures in the West.

The 8-14 day NWS forecast for the week ending 25Jan15 is for above normal temperatures across the western and northern 2/3rds of the country and below normal in the southeast.

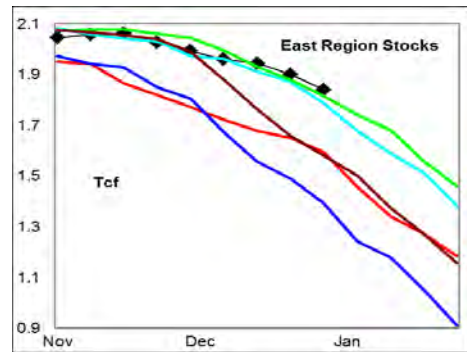


**Prices:** Nearby gas futures prices increased +\$0.05/mmbtu for the week ending 11Jan16, still -\$0.60/mmbtu below the prior record low for this time of year.

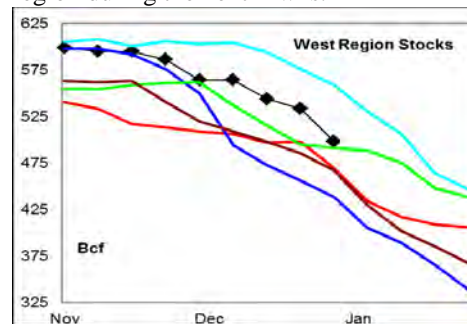


The 1<sup>st</sup> - 4<sup>th</sup> month forward price curve traded sideways last week, at a level near the 5-yr mid range.

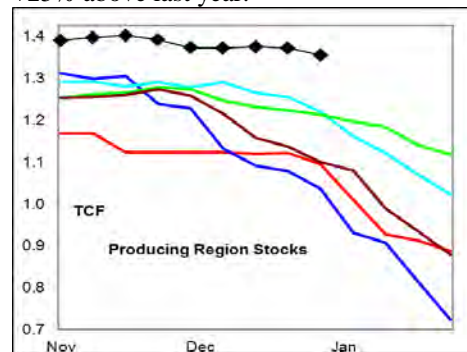
**East Region** stocks decreased -61 Bcf for the week, equal to a 3-yr low for the period. *The current stock level was a record high for this time of year.* Temperatures are forecast to be below normal during the next 10-days.



**West Region** stocks fell -35 Bcf last week, a record draw for the period on much below normal temperatures. Stock levels ended the week above the 3-yr mid range, and +6% above last year. The monthly rate of stock change was greater than the 3-yr mid range for the period. Temperatures are forecast to be above normal in this region during the next 2-wks.



**Producing Region** stocks decreased -17 Bcf for the week, a draw less than each of the last 3-yrs. Stock levels ended the week at 5-yr highs for this time of year and +25% above last year.



Temperatures are forecast to be below normal for the next 2-wks.

**Outlook:** Below normal temperatures are forecast to continue for eastern 1/2 of the country during the next 10-days, followed by a return to above average temperatures late in the month. Stock levels remain very high in all regions except the West. The cumulative and monthly rate of stock draw is at a 5-yr low. Risk of a price pull back is high.

### <sup>1</sup> Related Web Sites:

[Data Source is EIA Weekly Statistics](#)

[National Weather Service 6-10 Day](#)

[National Weather Service 10-14 Day](#)

## NATURAL GAS: Graph Link and Weekly Summary



Report prepared as of: January 11, 2016

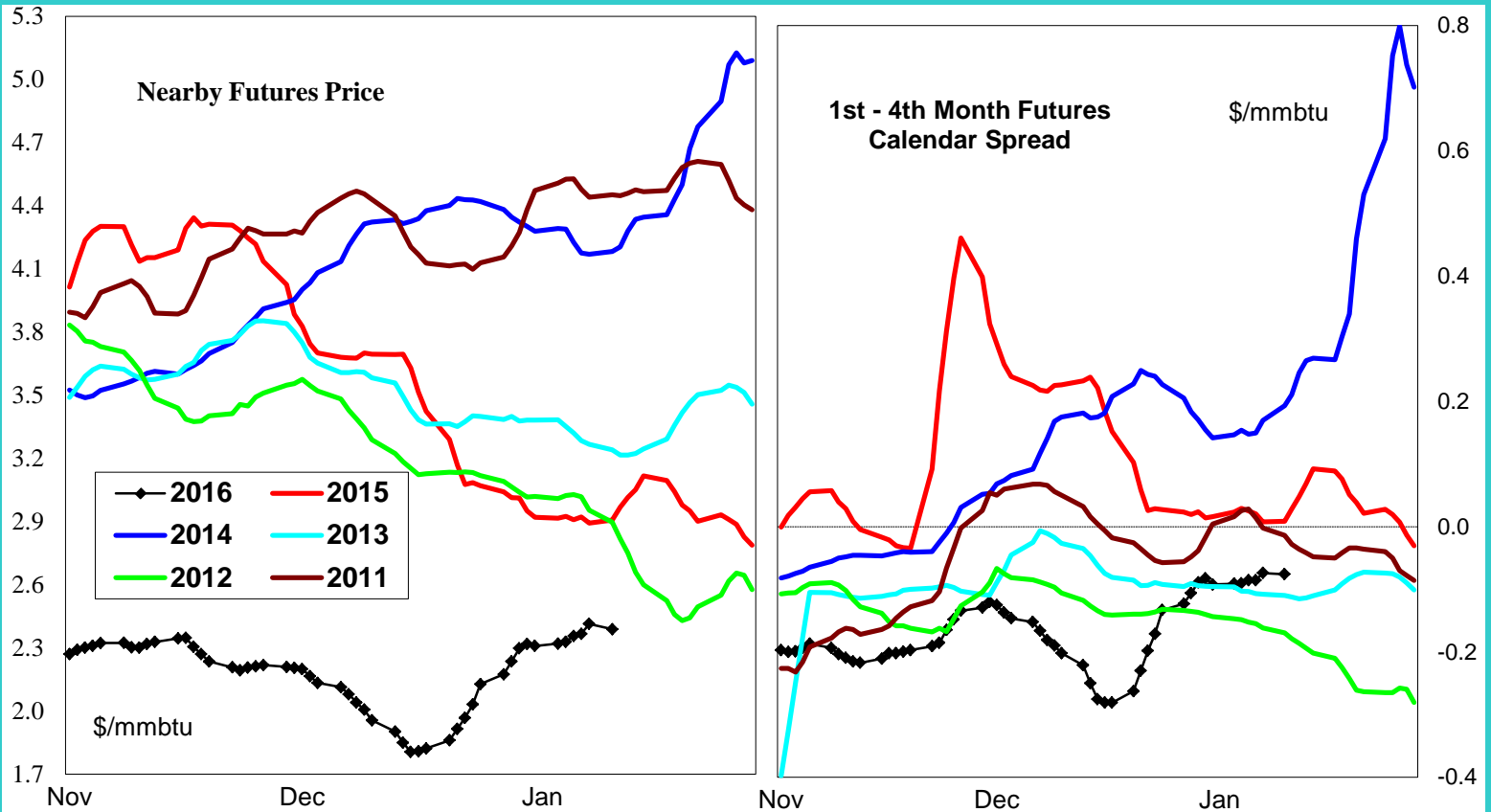
For the week ending:

1-Jan-16

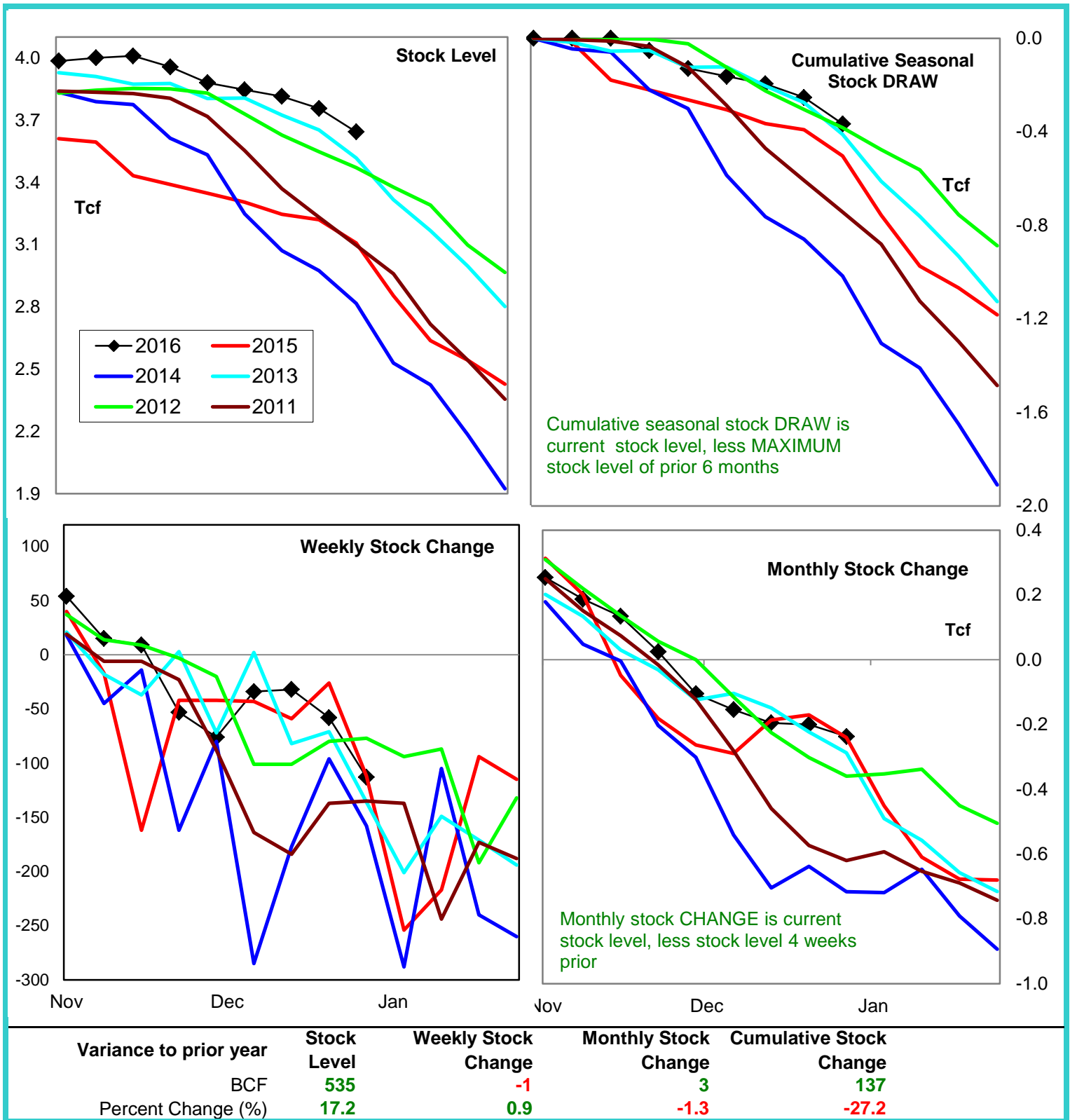
Stock Trends for the week ending:					Seasonal Trends in Stocks			
Week ending:	1-Jan-16							
Region	Weekly Stocks					Cumulative Stock Change		
	Bcf	Change vs prior:		Bcf		Change vs prior year		
		Week Bcf	Year (%)			Bcf	%	
U.S. Total	3,643	-113	17.2		U.S. Total	-366	137	-37.4
East	1,840	-61	15.4		East	-222	135	-60.8
West	498	-35	6.2		West	-101	-30	29.7
Producing	1,305	-17	24.9		Producing	-47	27	-57.4

### Futures Market Price Trends

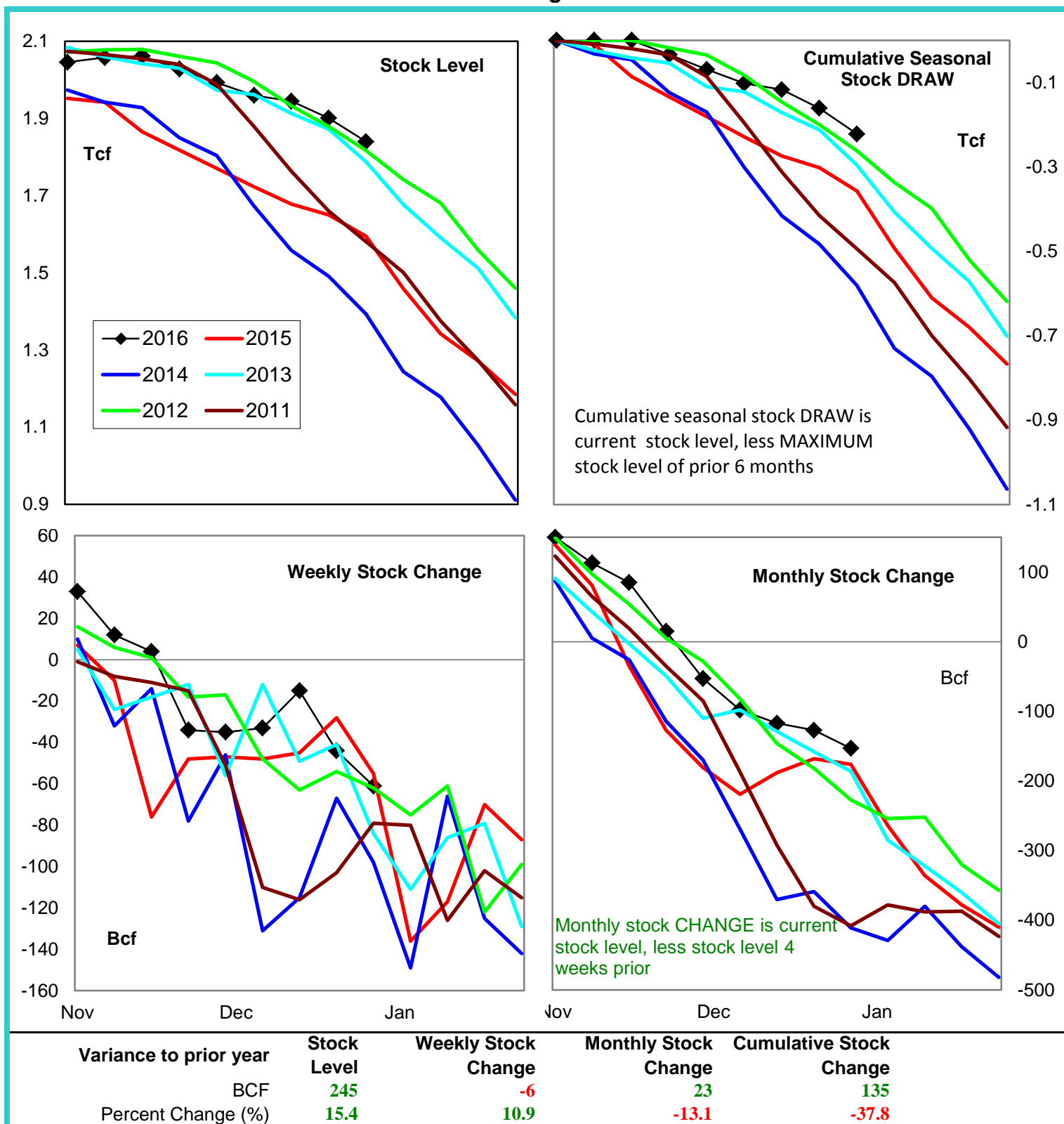
Date:	11-Jan-16	Change vs prior week, month, year		
		5-Jan-16	15-Dec-15	21-Jan-15
1st month Futures	2.39	0.06	0.57	-0.60
% change	xxxxx	2.8	31.1	-20.0



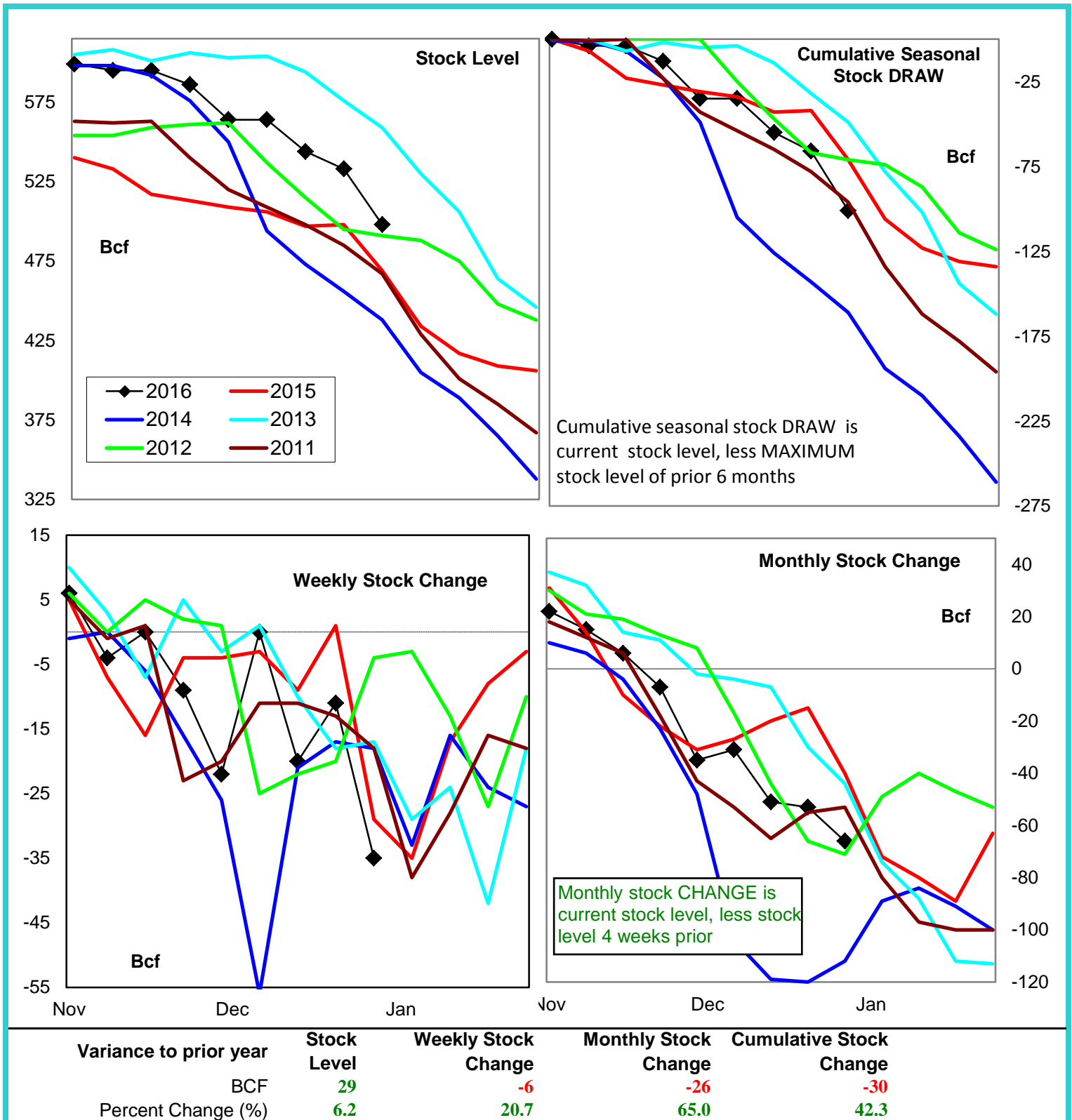
# United States Natural Gas Stock Trends



## Natural Gas East Region Stock Trends

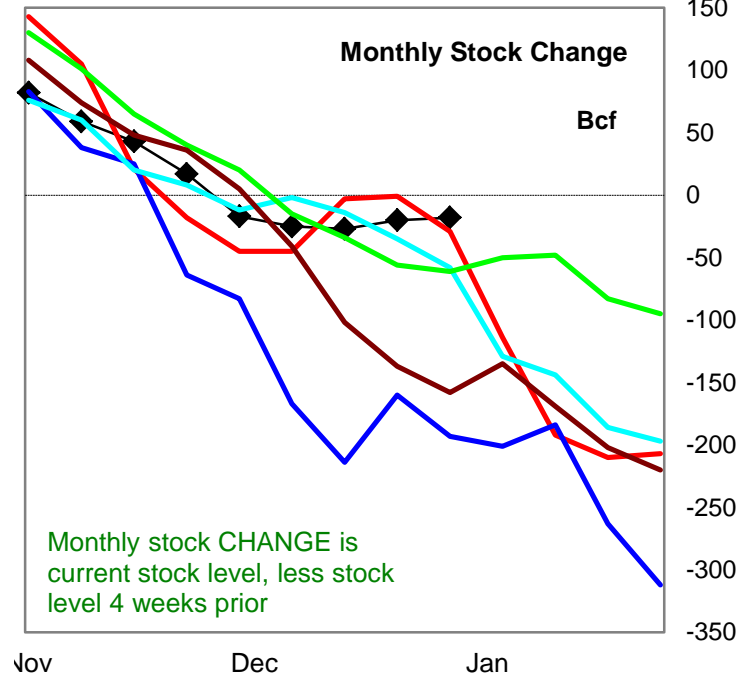
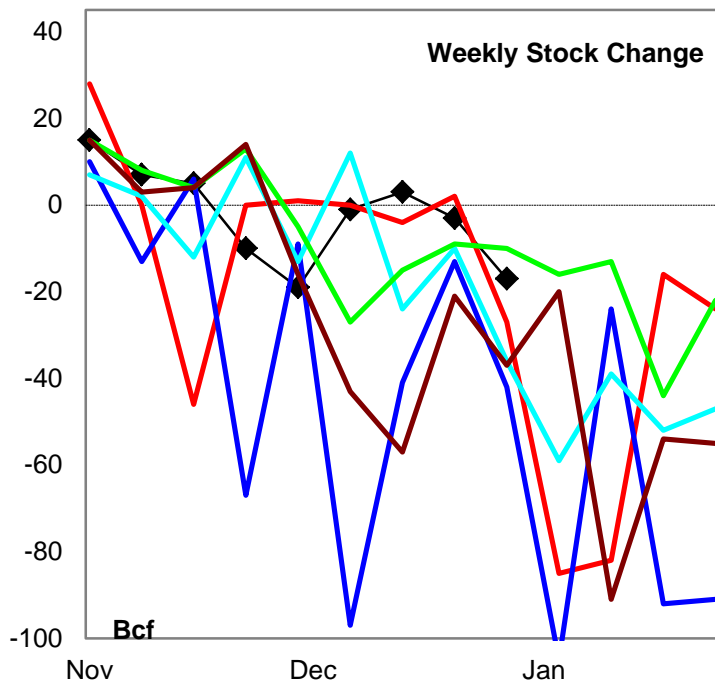
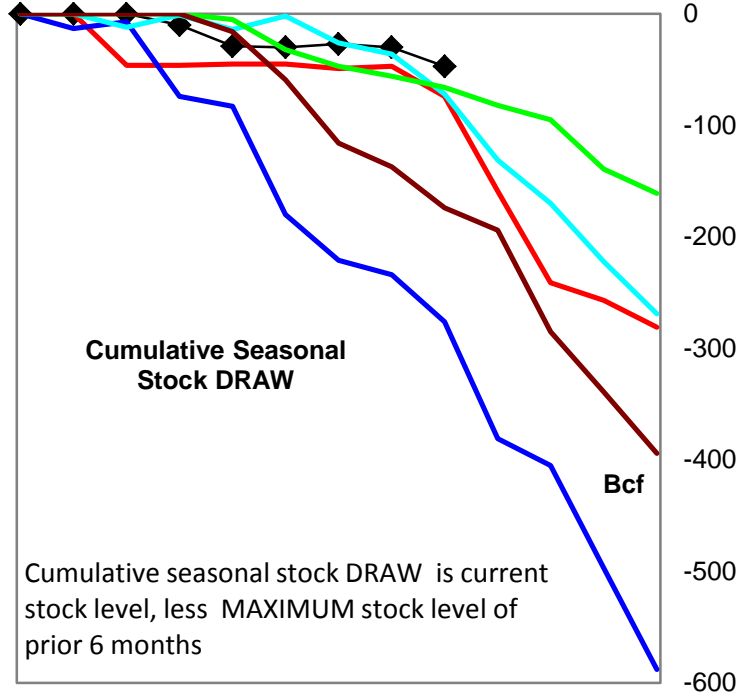
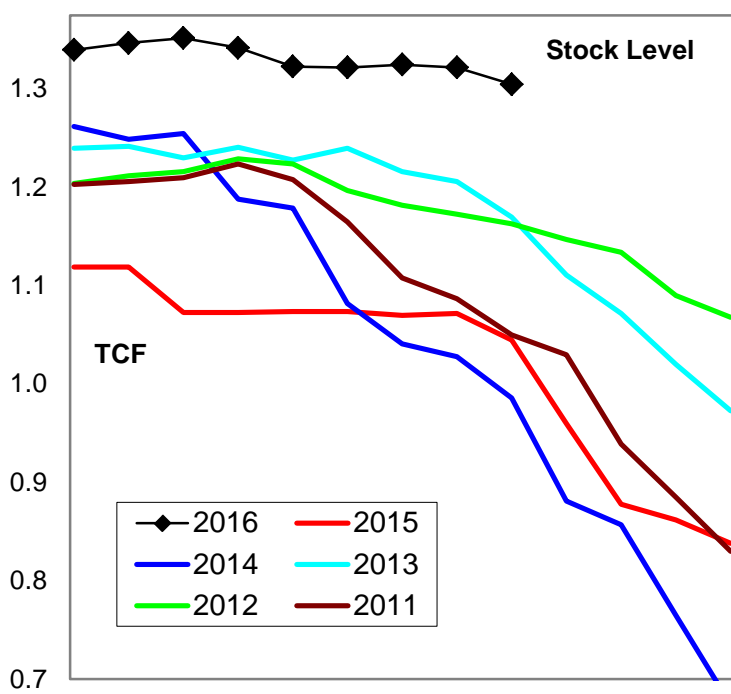


# Natural Gas West Region Stock Trends



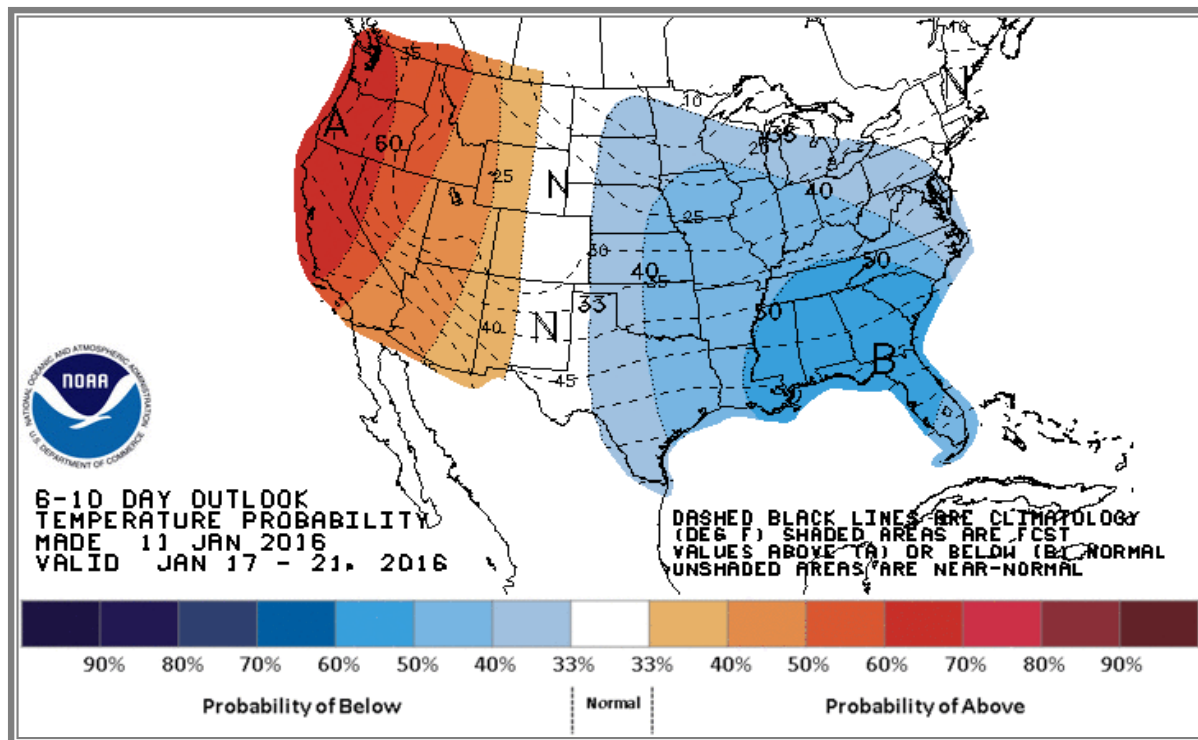


# Natural Gas Producing Region Stock Trends

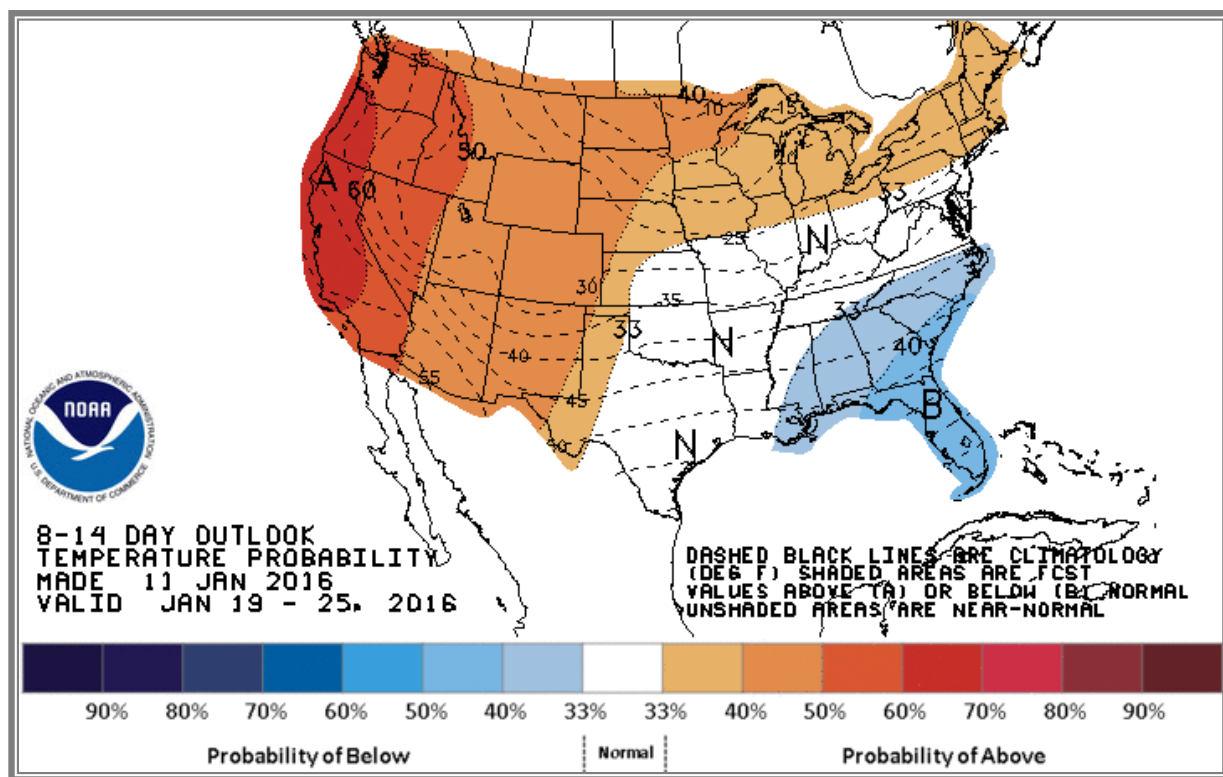


Variance to prior year	Stock Level	Weekly Stock Change	Monthly Stock Change	Cumulative Stock Change
BCF	260	10	11	27
Percent Change (%)	24.9	-37.0	-37.9	-36.5

## National Weather Service Climate Prediction Center Degree Days 6 - 10 Day Temperature Forecast



## National Weather Service Climate Prediction Center Degree Days 8 - 14 Day Temperature Forecast



# American Gas Association Regions

