



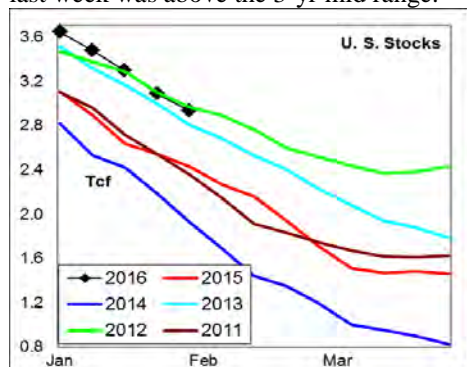
WEEKLY NATURAL GAS SUPPLY and PRICE TRENDS

A Fundamental Petroleum Trends Weekly Report

Lehi German Tel: 816.505.0980 www.fundamentalpetroleumtrends.com Monday, February 08, 2016



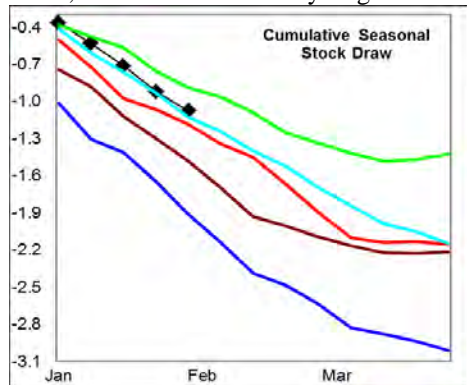
Summary ¹ The stock draw of -152 Bcf last week was above the 3-yr mid range.



The latest 4-wk stock change was a draw of -742 Bcf, equal to the 3-yr mid range for the period.



Cumulative seasonal draw was less than each of the last 3-yr at -1,000 Bcf. As a result, stock levels match 5-yr highs.



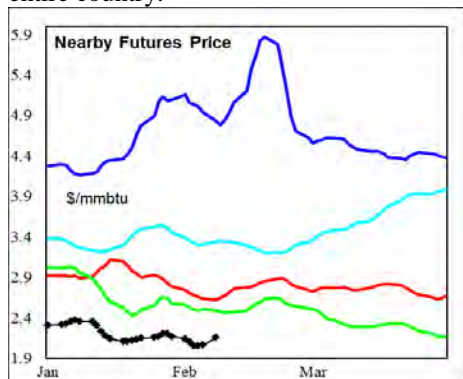
In the East Region stocks decreased -98 Bcf for the week, less than two of the last 3-yr. Stocks decreased -7 Bcf in the West Region, also a smaller draw than two of

the last 3-yr. Stocks decreased -47 Bcf in the Producing region, a draw equal to the 3-yr mid range.

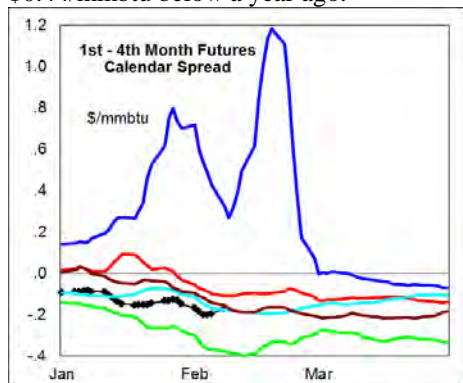
Temperatures were below normal across most of the country last week.

The 6-10 day NWS forecast for the week ending 17Feb16 is for above normal temperatures across the western 1/2 of the country and below normal in the eastern 1/2rd.

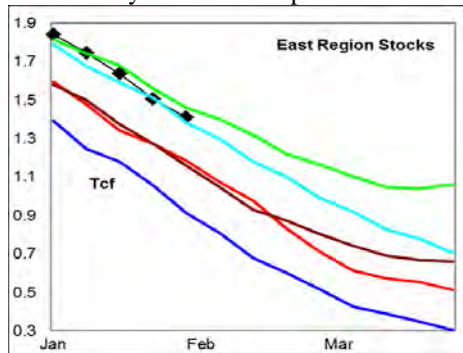
The 8-14 day NWS forecast for the week ending 21Feb is for much above normal temperatures across nearly the entire country.



Prices: Nearby gas futures prices was unchanged on the week ending 08Feb16. Prices remain below the 5-yr range and - \$0.44/mmbtu below a year ago.



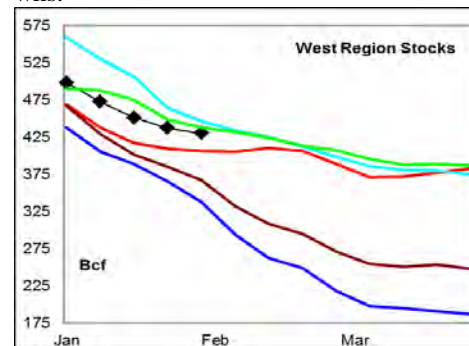
The 1st - 4th month forward price curve traded sideways last week, at a level that matched 3-yr lows for the period.



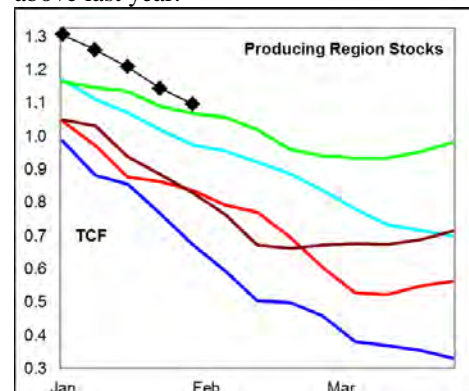
East Region stocks decreased -98 Bcf for

the week, a draw less than two of the last 3-yr for the period. *The current stock level matched 3-yr highs for this time of year.* Temperatures are forecast to be below normal during the next 2-wks.

West Region stocks decreased -7 Bcf last week, a draw less than two of the last 3-yr. Stock levels ended the week above the 3-yr mid range, and +6% above last year. The monthly rate of stock change matched 3-yr highs for the period. Temperatures are forecast to be well above normal in this region during the next 2-wks.



Producing Region stocks decreased -47 Bcf for the week, a draw equal to the 3-yr mid range. Stock levels ended the week at 5-yr highs for this time of year and +31% above last year.



Temperatures are forecast to be above normal for the next 2-wks.

Outlook: Above normal temperatures are forecast across the western 2/3rds of the country during the next 2-wks; with below normal temperatures in the Eastern 1/3 rd. Stock levels remain very high, particularly in the Producing region. The cumulative and monthly rate of stock draw are each near the 3-yr mid range. Risk of price weakness continues.

¹ Related Web Sites:

Data Source is EIA Weekly Statistics

National Weather Service 6-10 Day

National Weather Service 10-14 Day



NATURAL GAS: Graph Link and Weekly Summary

Report prepared as of: February 8, 2016

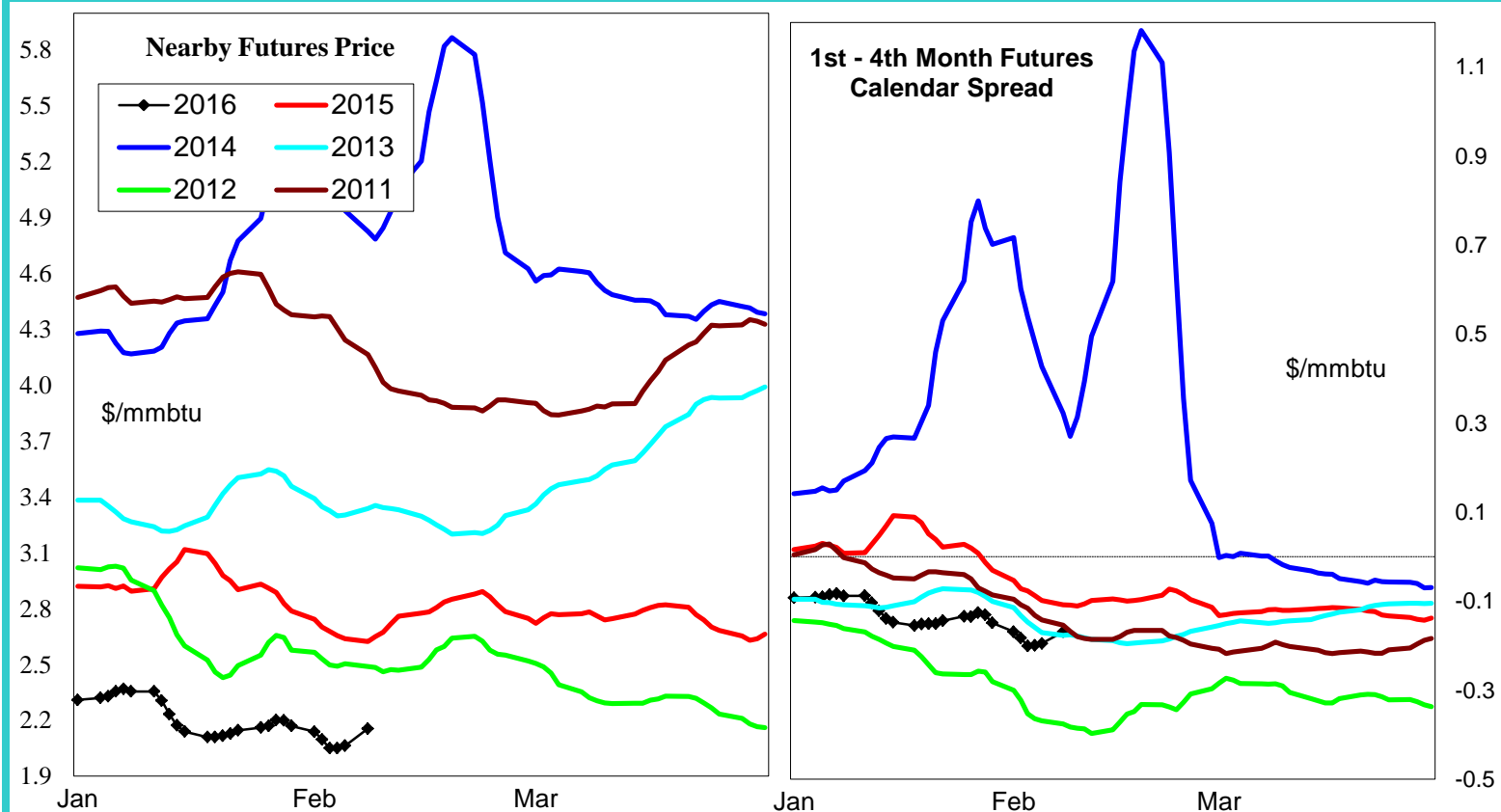
For the week ending:

29-Jan-16

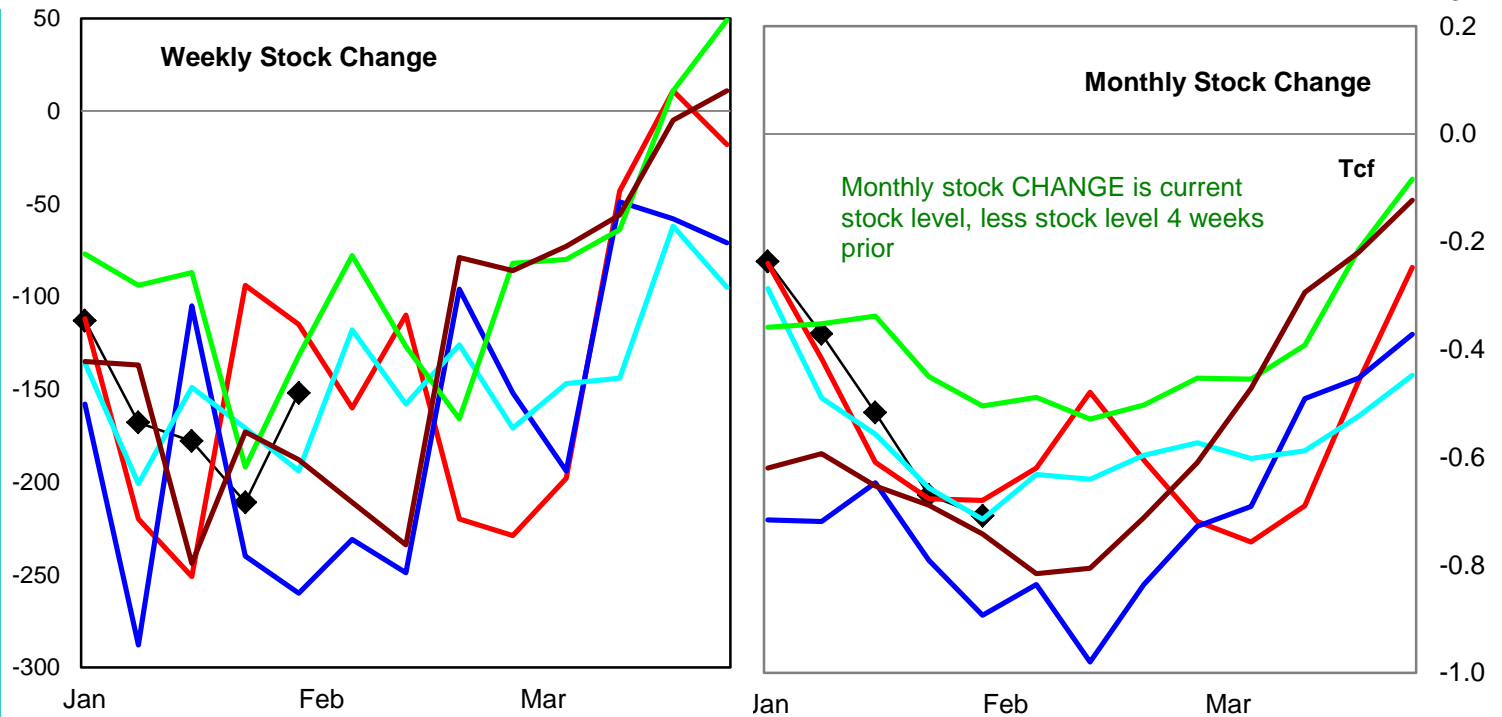
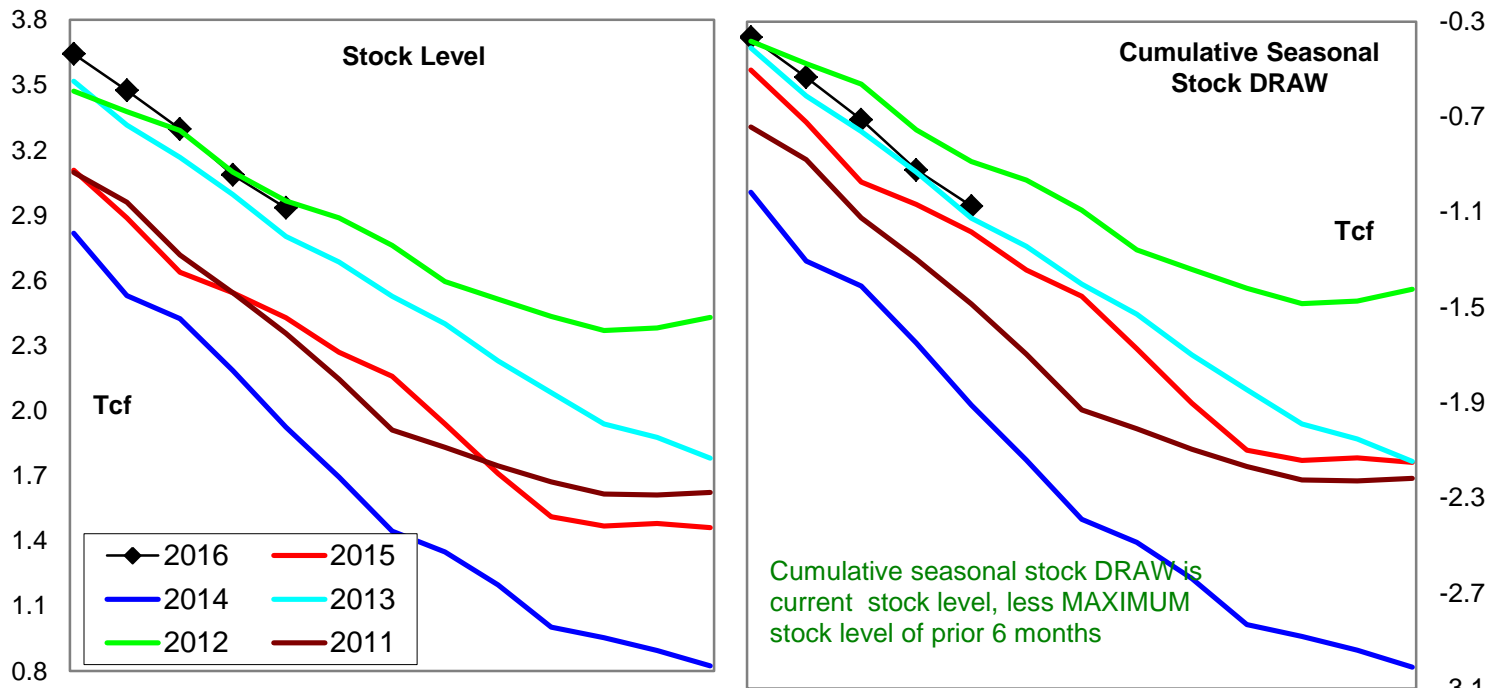
Stock Trends for the week ending:					Seasonal Trends in Stocks			
Week ending:	29-Jan-16							
Region	Weekly Stocks					Cumulative Stock Change		
	Bcf	Change vs prior:		Bcf		Change vs prior year		
		Week Bcf	Year (%)			Bcf	%	
U.S. Total	2,934	-152	20.8		U.S. Total	-1,075	108	-10.0
East	1,408	-98	18.8		East	-654	113	-17.3
West	430	-7	5.9		West	-169	-35	20.7
Producing	1,096	-47	30.8		Producing	-256	25	-9.8
Futures Market Price Trends								
Date:	5-Feb-16	Change vs prior week, month, year						
		1-Feb-16	11-Jan-16	17-Feb-15				
1st month Futures	2.16	0.13	-0.10	-0.80				
% change	xxxxx	6.4	-4.5	-27.0				

Futures Market Price Trends

Date:	5-Feb-16	Change vs prior week, month, year		
		1-Feb-16	11-Jan-16	17-Feb-15
1st month Futures	2.16	0.13	-0.10	-0.80
% change	xxxxx	6.4	-4.5	-27.0

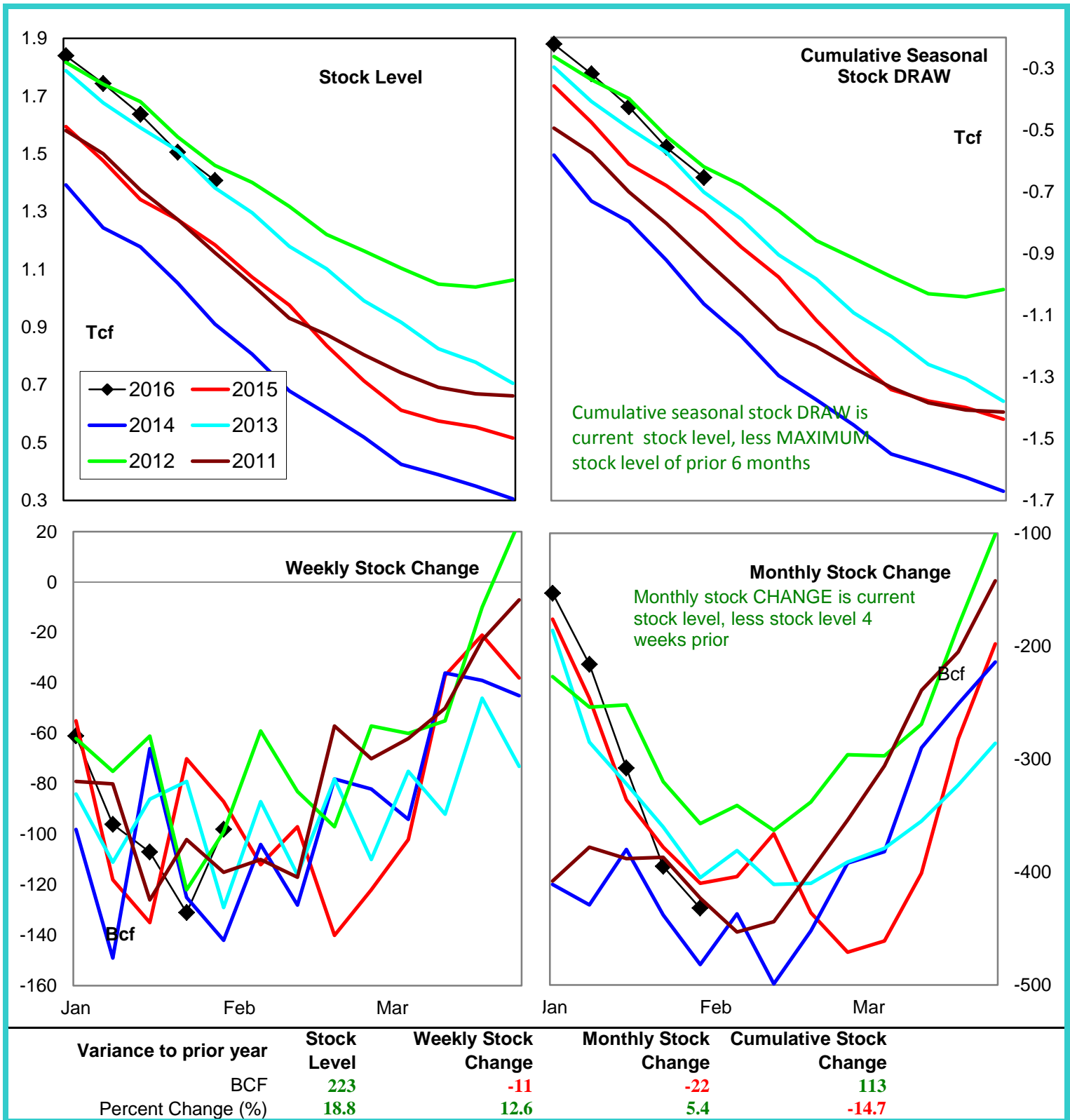


United States Natural Gas Stock Trends

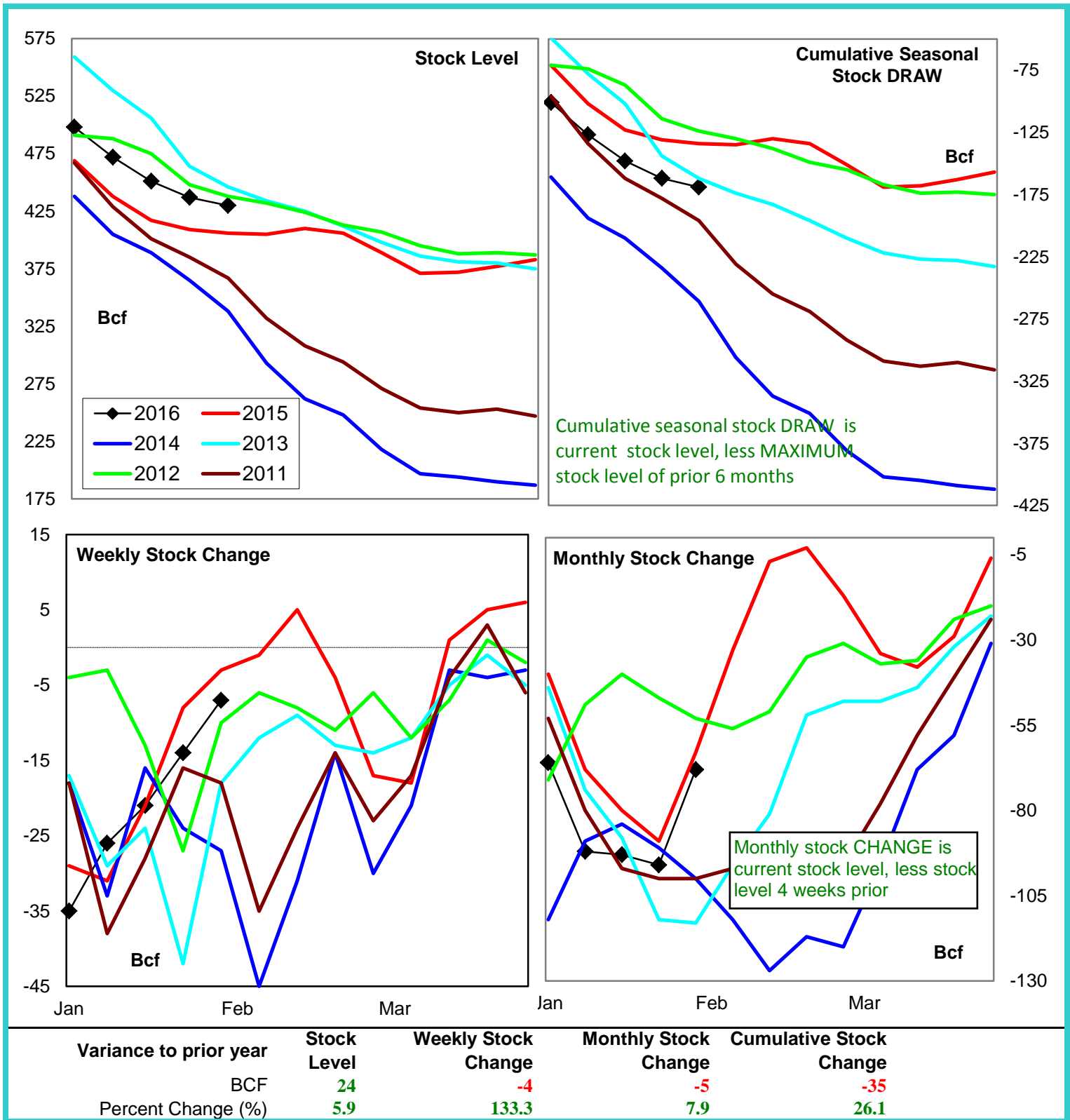


Variance to prior year	Stock Level	Weekly Stock Change	Monthly Stock Change	Cumulative Stock Change
BCF	506	-37	-29	108
Percent Change (%)	20.8	32.2	4.3	-9.1

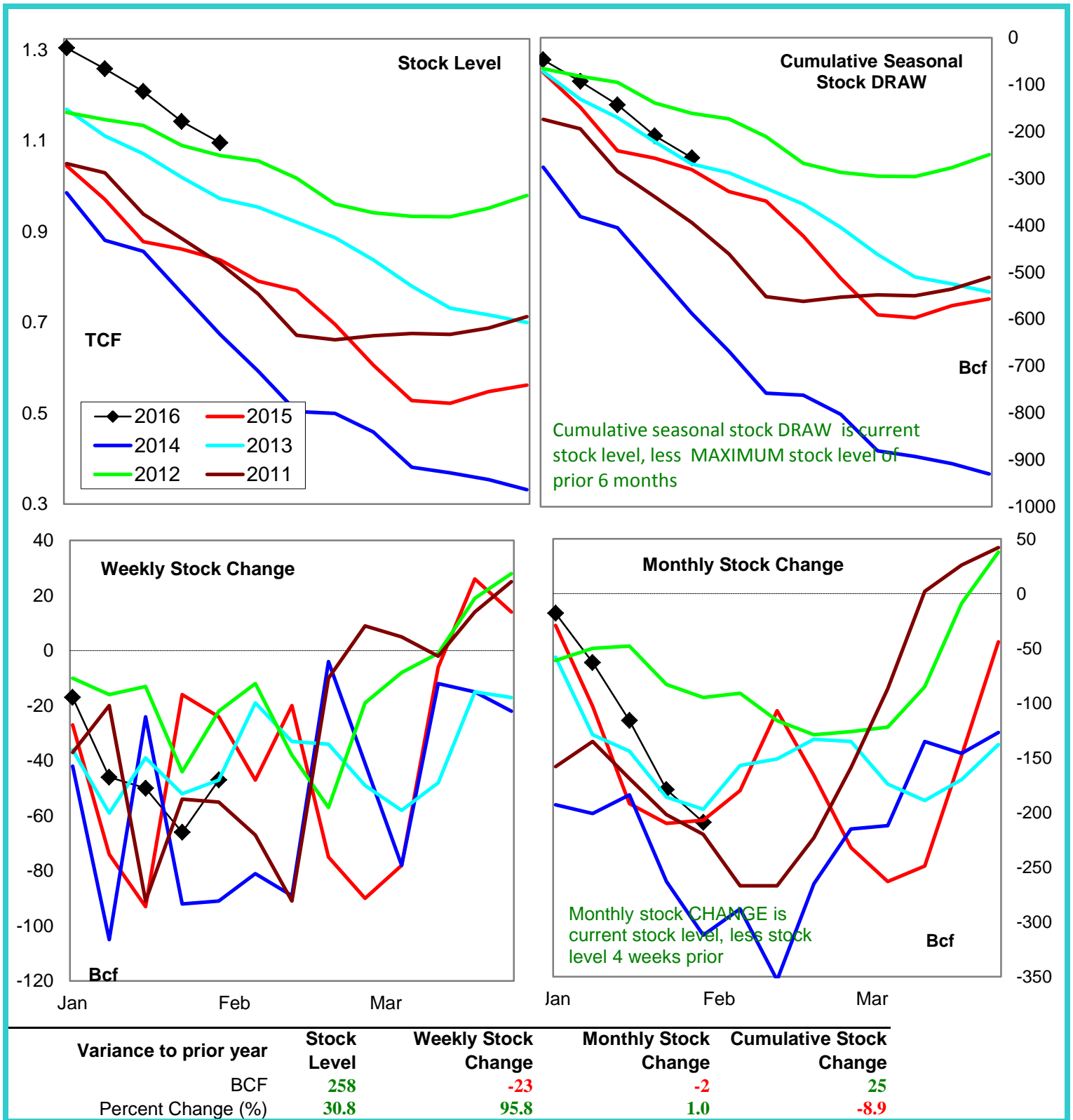
Natural Gas East Region Stock Trends



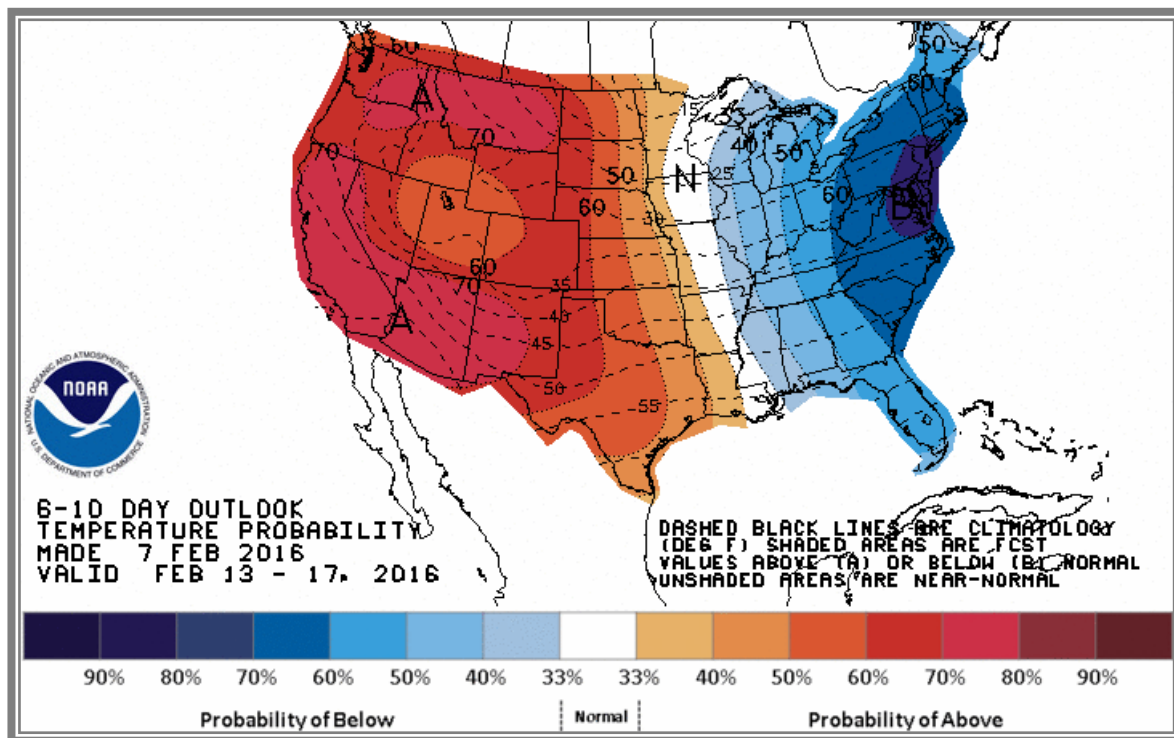
Natural Gas West Region Stock Trends



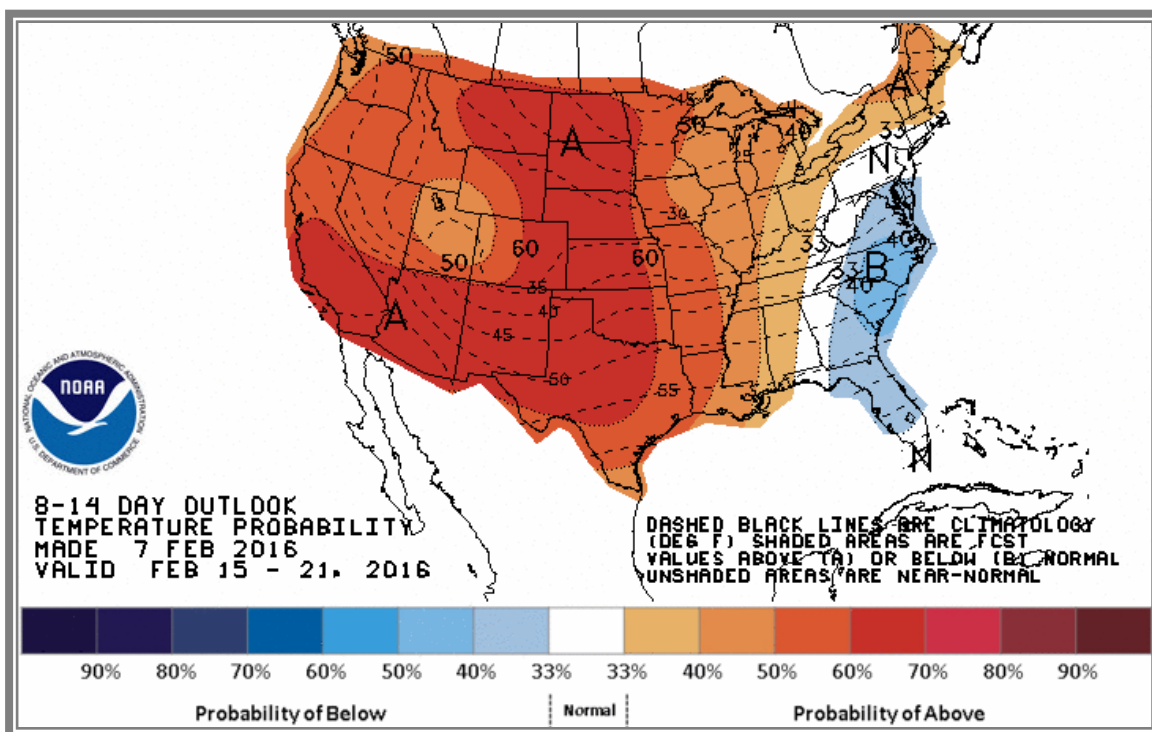
Natural Gas Producing Region Stock Trends



National Weather Service Climate Prediction Center Degree Days 6 - 10 Day Temperature Forecast



National Weather Service Climate Prediction Center Degree Days 8 - 14 Day Temperature Forecast



American Gas Association Regions

