



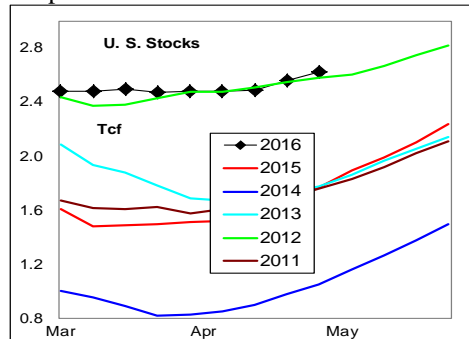
WEEKLY NATURAL GAS SUPPLY and PRICE TRENDS

A Fundamental Petroleum Trends Weekly Report

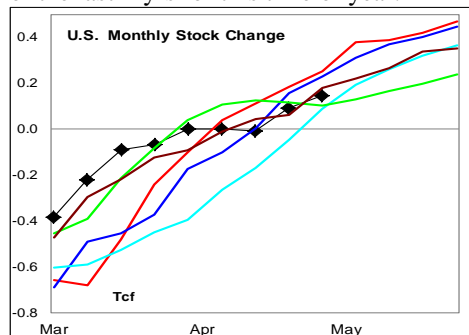
Lehi German Tel: 816.505.0980 www.fundamentalpetroleumtrends.com Monday, May 09, 2016



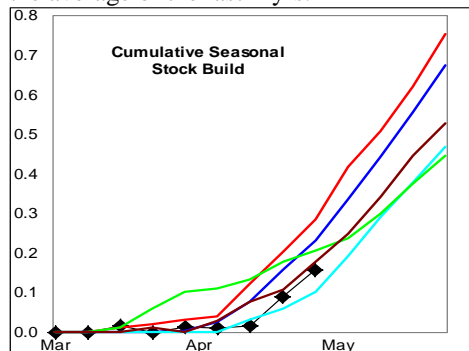
Summary¹ The stock build of +68 Bcf last week slightly below the last 2-yr for the period.



The latest 4-wk stock change was a build of +179 Bcf, -60 Bcf less than the average of the last 2-yr for this time of year.



Cumulative seasonal build was at the low end of the 5-yr range and -65 Bcf below the average of the last 2-yr.



In the East Region stocks increased +35 Bcf for the week, a level comparable to the last 2-yr. Stocks increased +9 Bcf in the West Region, above the 3-yr average. Stocks increased +24 Bcf in the Producing region, a build below each of the last 2-yr.

¹ Related Web Sites:

[Data Source is EIA Weekly Statistics](#)

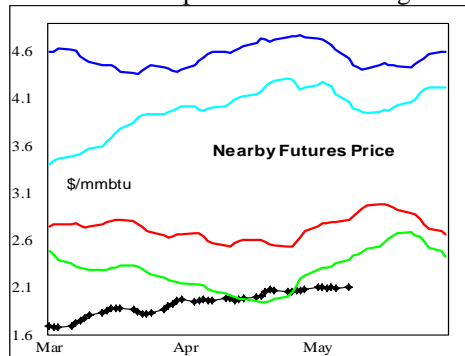
[National Weather Service 6-10 Day](#)

[National Weather Service 10-14 Day](#)

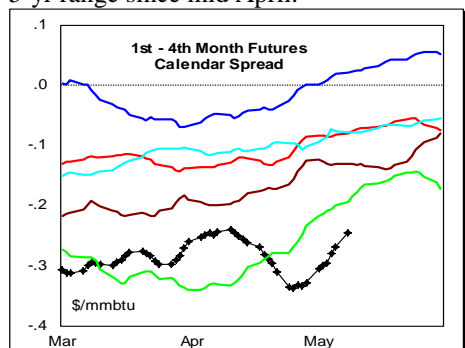
Temperatures were above normal across nearly the entire country last week.

The 6-10 day NWS forecast for the week ending 18May16 is for below normal temperatures across the central 2/3rds of the country. Temperatures will be above normal in the West and south.

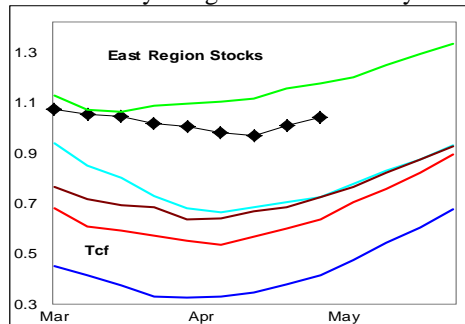
The 8-14 day NWS forecast for the week ending 22May16 is for above normal temperatures in the south southeast, with near normal temperatures in other regions.



Prices: Nearby gas futures prices increased +\$0.06 mmbtu for the week ending 09May16. Although prices have recently trended higher, the level remains below the 5-yr range since mid April.



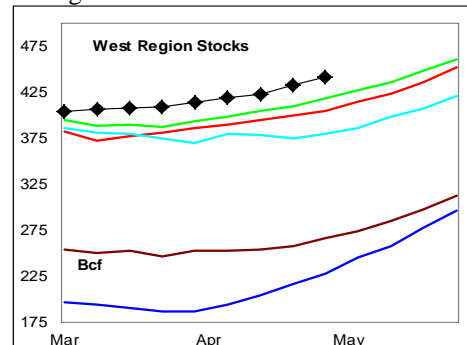
The 1st - 4th month forward price curve trended higher last week, at a level just below the 5-yr range for this time of year.



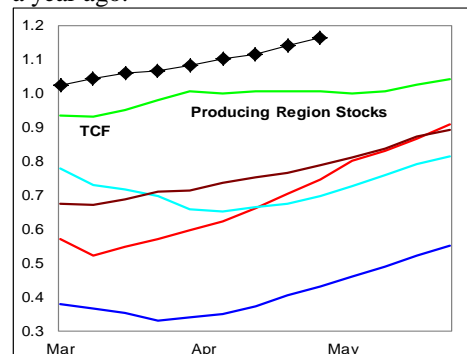
East Region stocks increased +35 Bcf for the week, a build comparable to the last 2-yr. The current stock level is +67% above a year ago. Temperatures are forecast to be below normal during the next 2-wks.

West Region stocks increased +9 Bcf last

week, a level above the 3-yr average. Stock levels ended the week at a 5-yr high for this time of year. Temperatures are forecast to be above normal in this region during the next 2-wks.



Producing Region stocks increased +24 Bcf for the week, a build less than the last 2-yr. Stock levels ended the week at 5-yr highs for this time of year and +56% above a year ago.



Temperatures are forecast to be above normal for the next 2-wks.

Outlook: Above normal temperatures are forecast for the next 2-wks in the South and West, with below normal temperatures in the Midwest, great lakes and northeast.

Stock levels match 5-yr highs set in 2012 and are +50% above last year.

Look for the current price uptrend to extend through month end with higher electric power demand.



NATURAL GAS: Graph Link and Weekly Summary

Report prepared as of: May 9, 2016

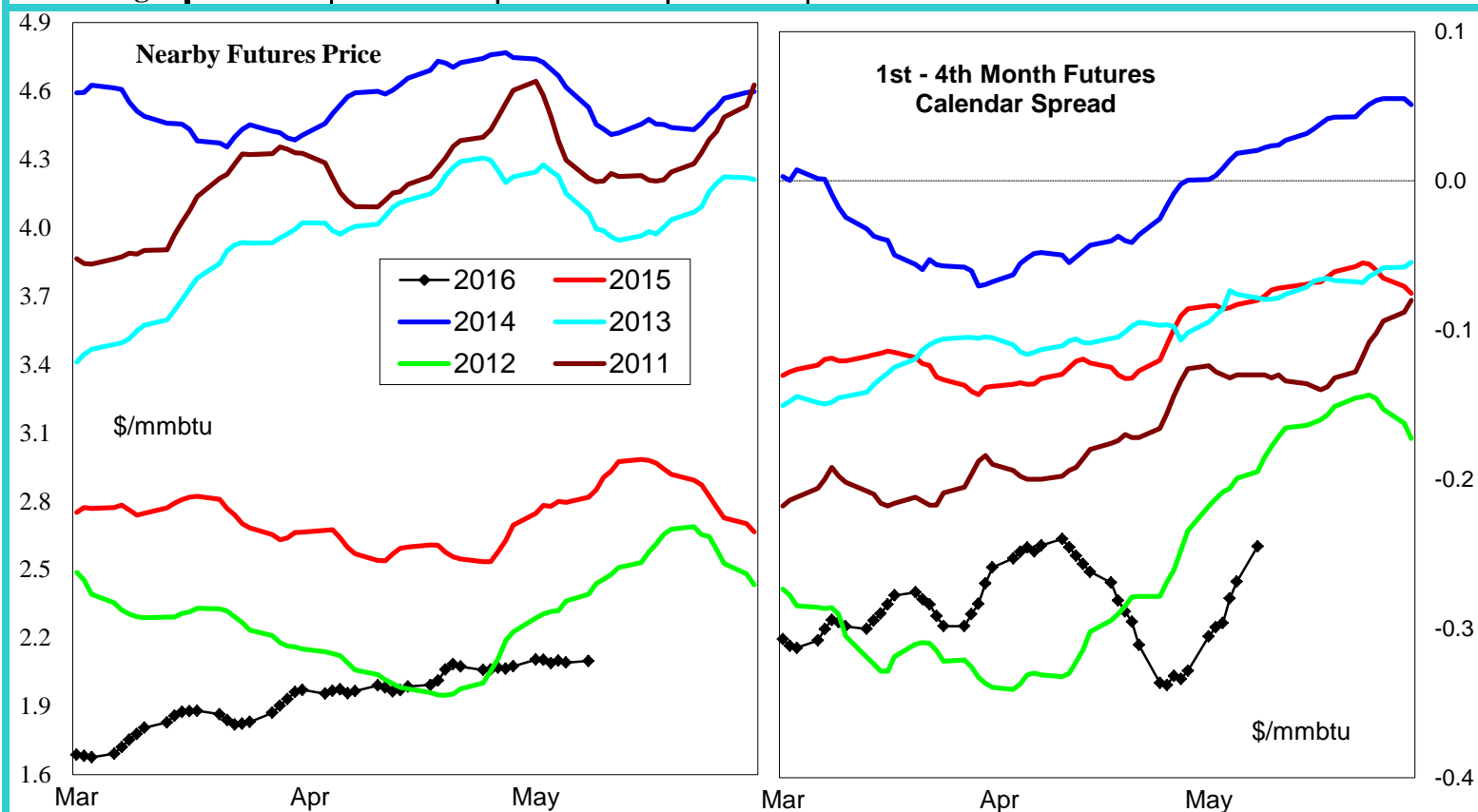
For the week ending:

29-Apr-16

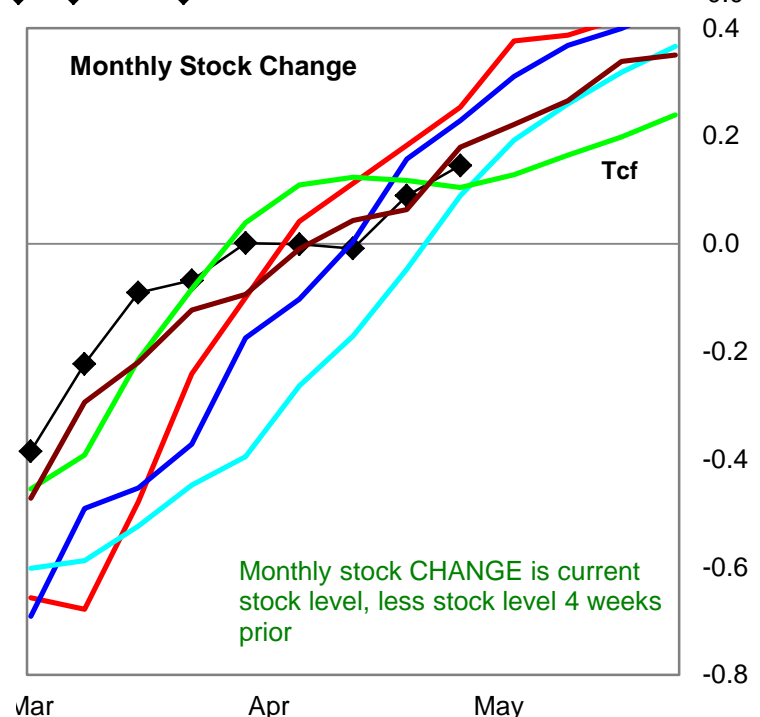
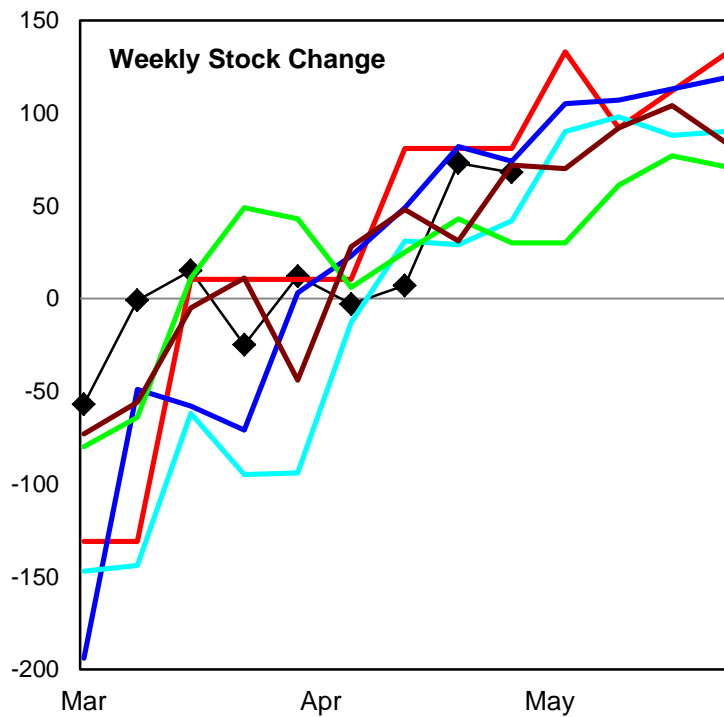
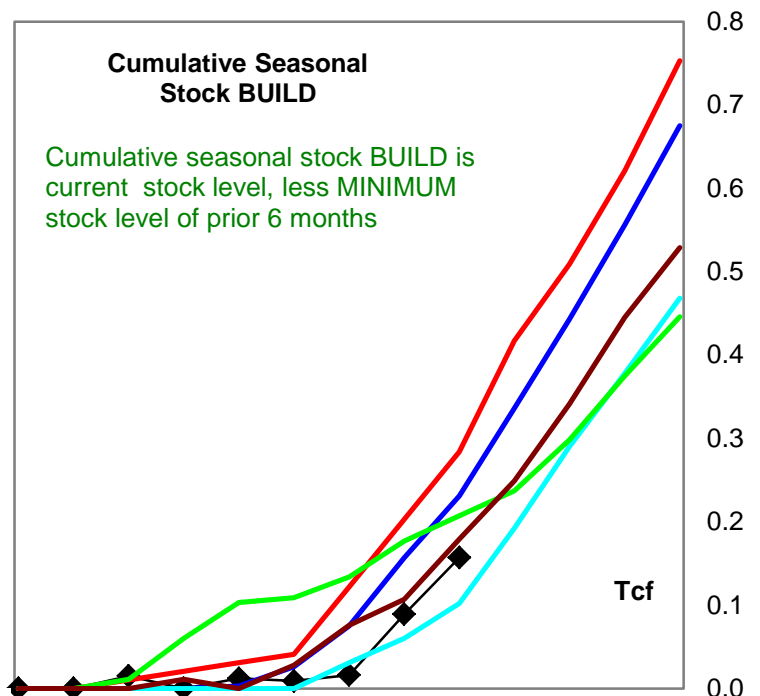
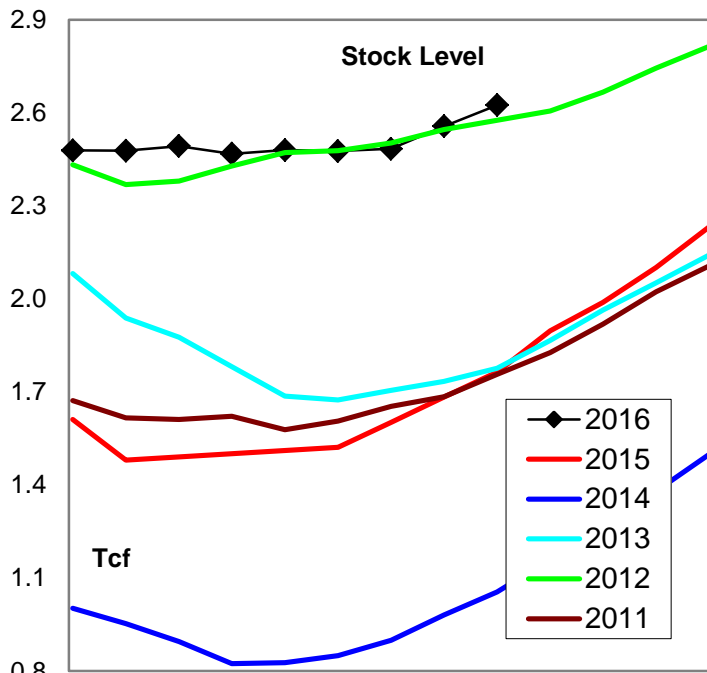
Stock Trends for the week ending:					Seasonal Trends in Stocks			
Week ending:	29-Apr-16							
Region	Weekly Stocks					Cumulative Stock Change		
	Bcf	Change vs prior:		Bcf		Change vs prior year		
		Week Bcf	Year (%)			Bcf	%	
U.S. Total	2,625	68	48.8		U.S. Total	157	-127	-80.9
East	1,020	35	66.7		East	74	-28	-37.8
West	441	9	9.2		West	41	9	22.0
Producing	1,164	24	55.8		Producing	144	-79	-54.9

Futures Market Price Trends

Date:	22-Mar-16	Change vs prior week, month, year		
		9-Mar-16	17-Feb-16	30-Mar-15
1st month Futures	2.10	0.01	0.10	-0.79
% change	xxxxx	0.6	4.7	-27.3

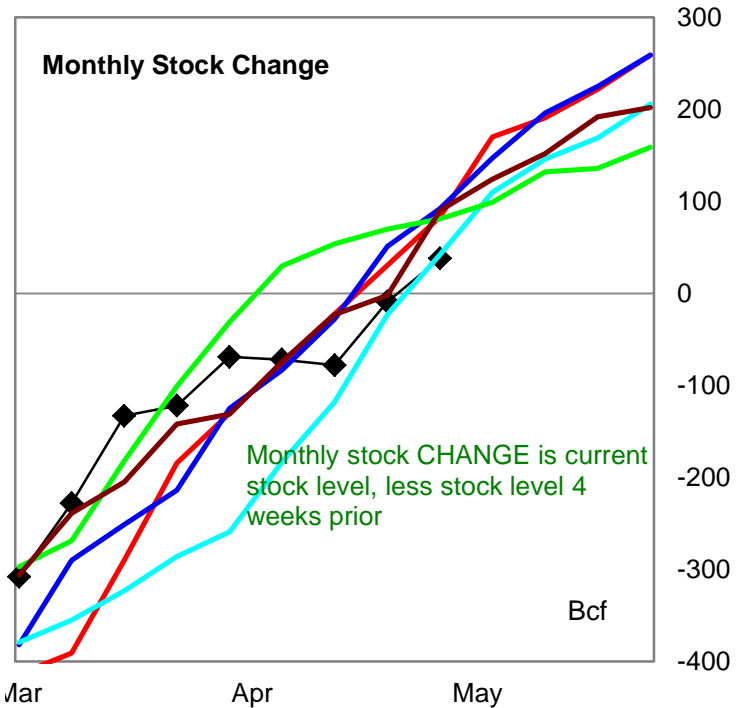
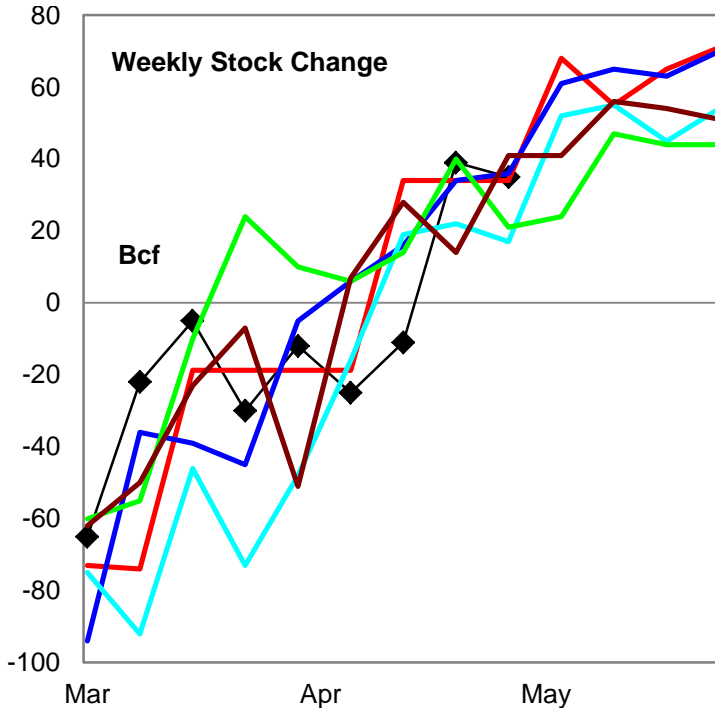
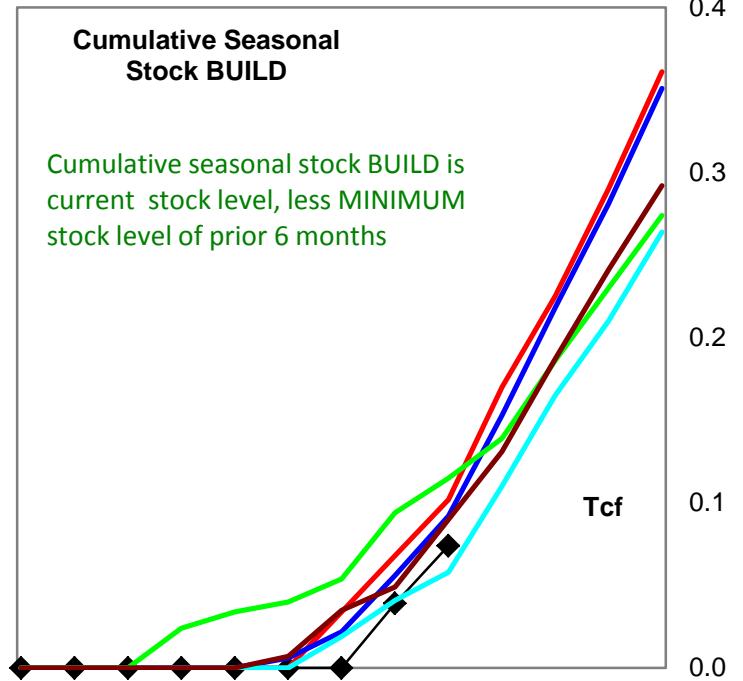
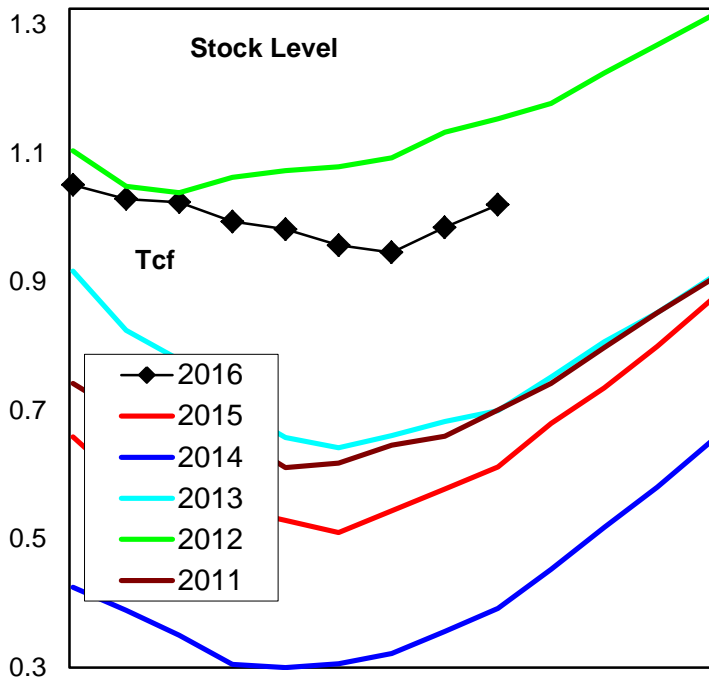


United States Natural Gas Stock Trends



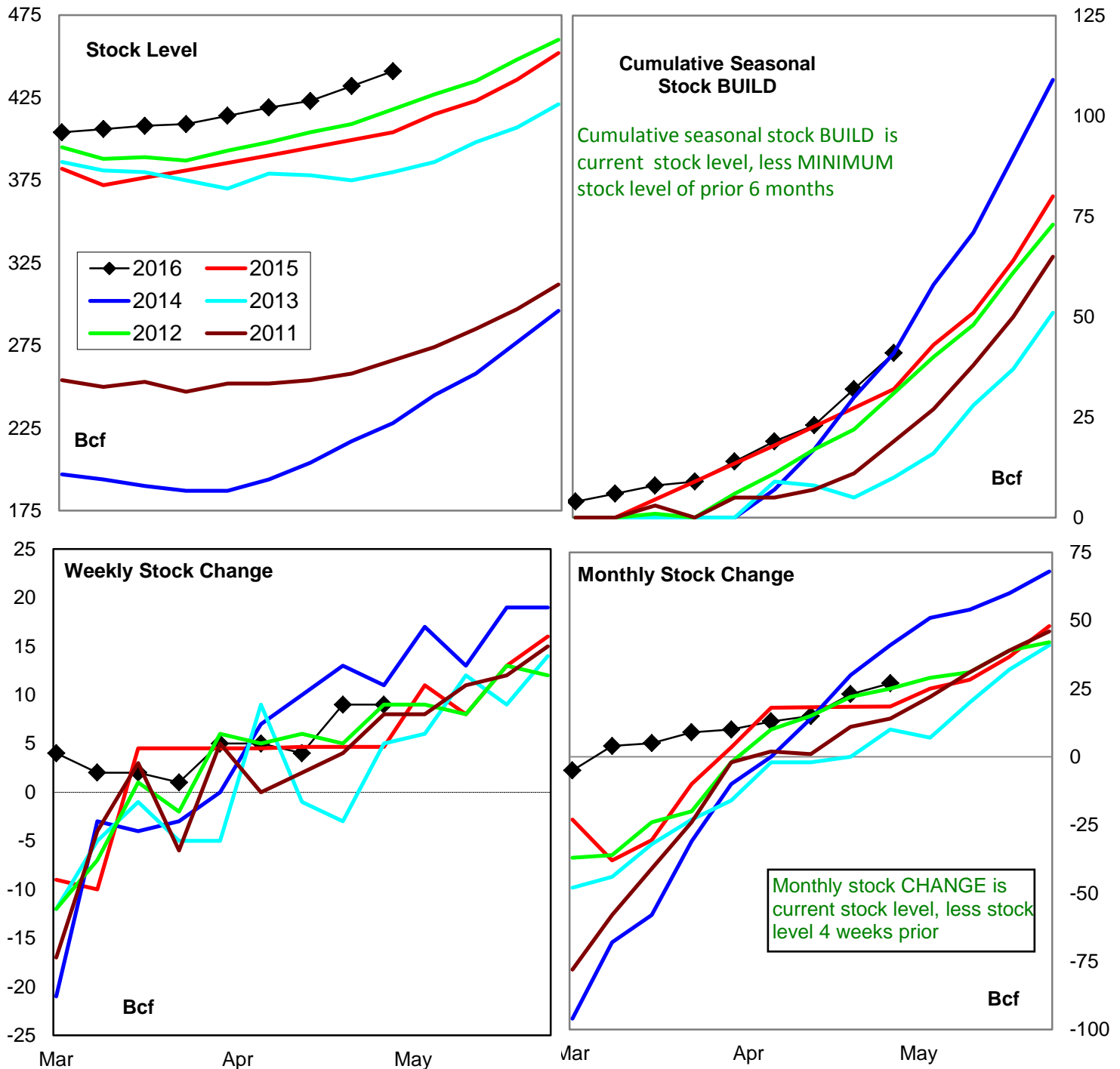
Variance to prior year	Stock Level	Weekly Stock Change	Monthly Stock Change	Cumulative Stock Change
BCF	861	-13	-108	-127
Percent Change (%)	48.8	-16.0	-42.7	-44.7

Natural Gas East Region Stock Trends



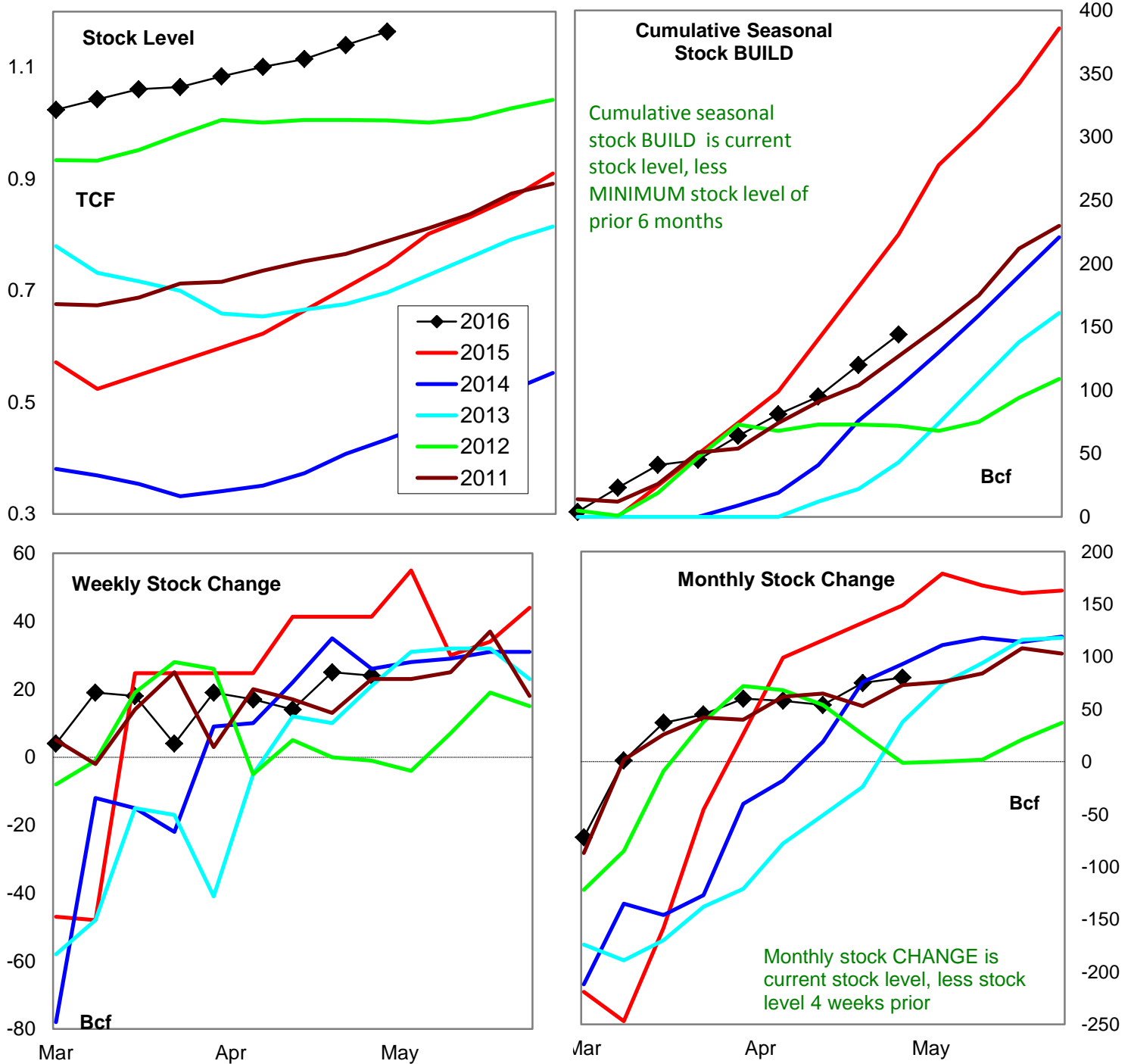
Variance to prior year	Stock Level	Weekly Stock Change	Monthly Stock Change	Cumulative Stock Change
BCF	408	1	-45	-28
Percent Change (%)	66.7	2.9	-54.4	-27.5

Natural Gas West Region Stock Trends



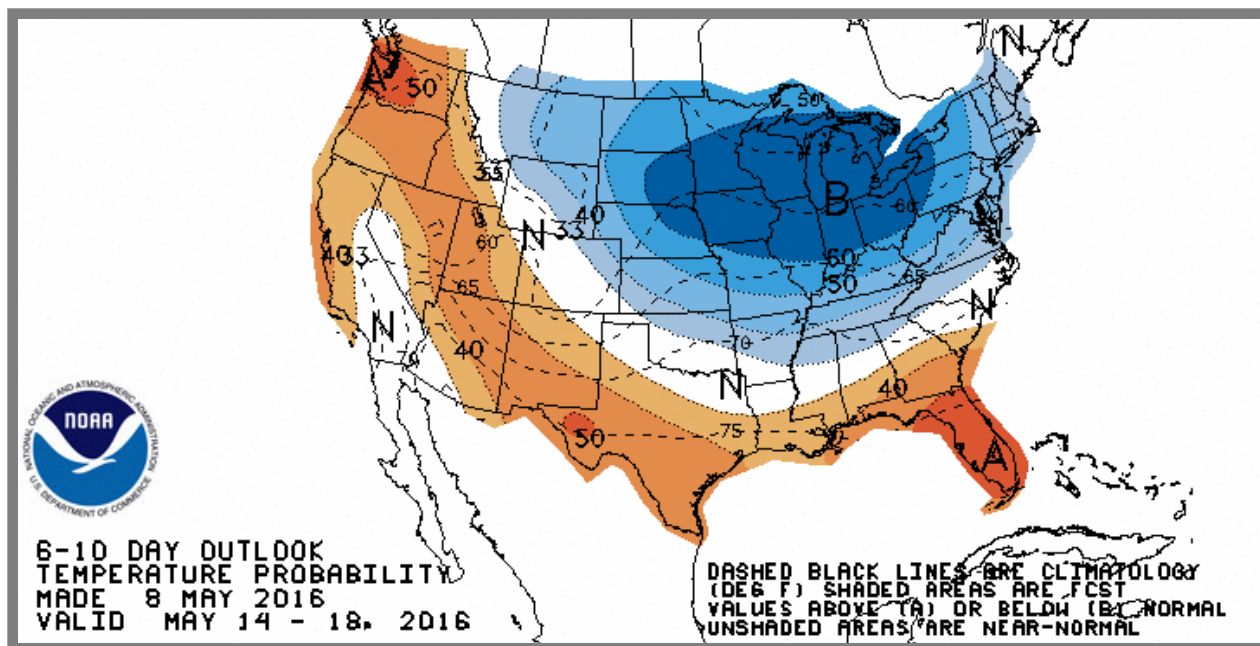
Variance to prior year	Stock Level	Weekly Stock Change	Monthly Stock Change	Cumulative Stock Change
BCF	37	4	9	9
Percent Change (%)	9.2	92.9	45.9	28.1

Natural Gas Producing Region Stock Trends

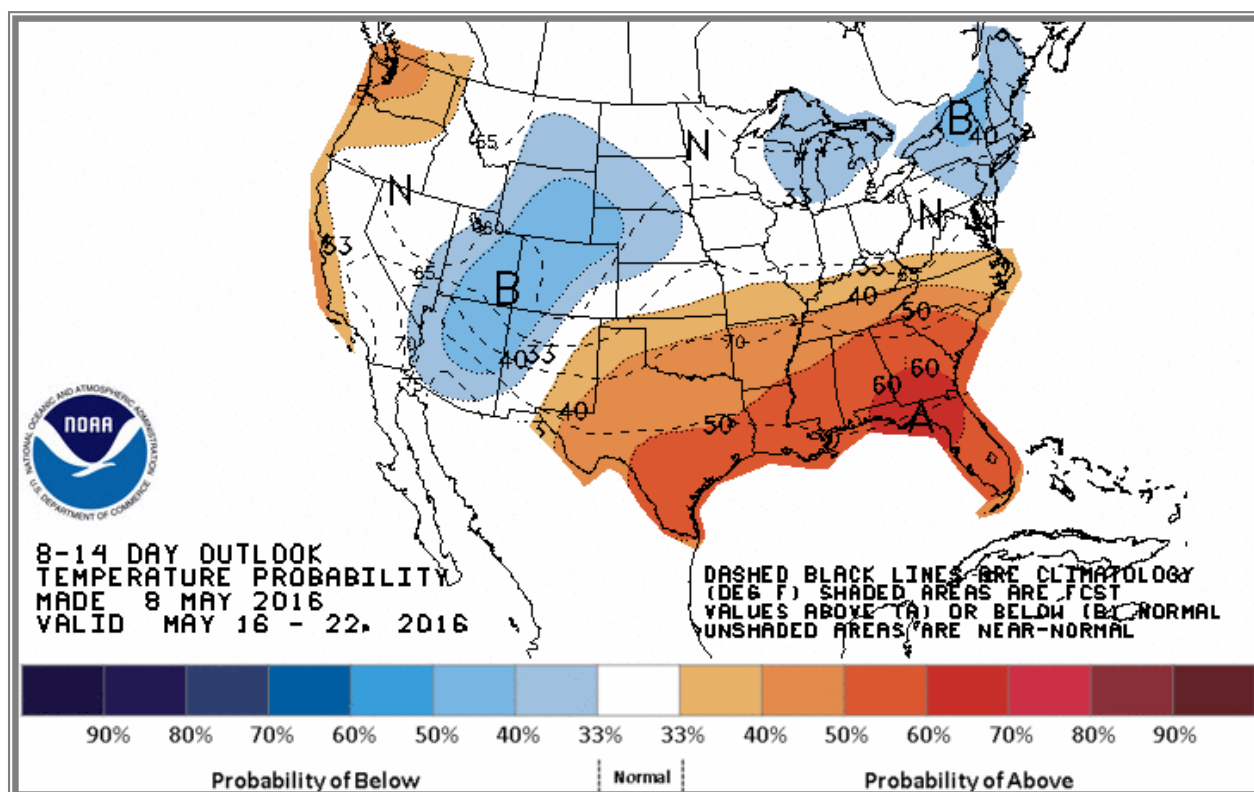


Variance to prior year	Stock Level	Weekly Stock Change	Monthly Stock Change	Cumulative Stock Change
BCF	417	-17	-69	-79
Percent Change (%)	55.8	-41.9	-46.2	-35.4

National Weather Service Climate Prediction Center Degree Days 6 - 10 Day Temperature Forecast



National Weather Service Climate Prediction Center Degree Days 8 - 14 Day Temperature Forecast



American Gas Association Regions

